

NO. OF COPIES RECEIVED	
DISTRIBUTION	
SANTA FE	1
FILE	1 ✓
U.S.G.S.	2
LAND OFFICE	
OPERATOR	1

NEW MEXICO OIL CONSERVATION COMMISSION  
RECEIVED

APR 20 1980

O. C. D.

30-005-60712  
Form C-101  
Revised 1-1-65

1A. Indicate Type of Lease
STATE <input type="checkbox"/> FEE <input checked="" type="checkbox"/>

5. State of New Mexico

APPLICATION FOR PERMIT TO DRILL, DEEPEN, OR PLUG BACK

1a. Type of Work		1b. Type of Well		1c. Name of Operator	
DRILL <input checked="" type="checkbox"/> DEEPEN <input type="checkbox"/> PLUG BACK <input type="checkbox"/>		GAS WELL <input type="checkbox"/> OTHER <input type="checkbox"/> SINGLE ZONE <input checked="" type="checkbox"/> MULTIPLE ZONE <input type="checkbox"/>		Coronado Exploration Corp. ✓	
2. Address of Operator		3. Name of Lessee		4. Location of Well	
1005 Marquette NW Albuquerque, NM 87102		J.P. White D		UNIT LETTER E LOCATED 1980 FEET FROM THE north LINE	
AND 660 FEET FROM THE west LINE OF SEC. 20 TWP. 10S RSE. 28E		3		und Racetrack SA	
5. County		6. State		7. Date of Application	
Chaves		New Mexico		April 30, 1980	
8. Proposed Casing and Cement Program		9. Kind & Status of Lease		10. Drilling Contractor	
3761.0 Gr		Statewide		Cortez Drilling	
11. Kind & Status of Lease		12. Date Work will start		13. Name of Operator	
2300		April 30, 1980		Cable Tool	

PROPOSED CASING AND CEMENT PROGRAM

SIZE OF HOLE	SIZE OF CASING	WEIGHT PER FOOT	SETTING DEPTH	SACKS OF CEMENT	EST. TOP
10"	8-5/8"	20#	330	200	Circulate
8"	4-1/2"	9.5#	2220	135	1720

We plan to drill a 10" hole to 330' and set 8-5/8" 20# surface casing. We will circulate the cement and WOC 18 hrs. We will test the casing for leaks. If there are no leaks we will continue to drill making an 8" hole to approximately 2300'. We will set 4-1/2" casing at 2220' and cement with a pack-off shoe leaving approximately 80' of open hole. We will run SNP, Dual Induction and Density logs to TD.

APPROVAL MAILED  
FOR 10-1-80  
DRILLING COMPLETED,

EXPIRES 8-1-80

IN ABOVE SPACE DESCRIBE PROPOSED PROGRAM; IF PROPOSAL IS TO DEEPEN OR PLUG BACK, GIVE DATA ON PRESENT PRODUCTIVE ZONE AND PROPOSED NEW PRODUCTIVE ZONE. GIVE BLOWOUT PREVENTER PROGRAM, IF ANY.

I hereby certify that the information above is true and complete to the best of my knowledge and belief.

Signed BY: Coronado Exploration Corp. Title ENGINEER Date April 28, 1980

(This space for State Use)

APPROVED BY W. A. Gussit TITLE SUPERVISOR, DISTRICT II DATE MAY - 1 1980

CONDITIONS OF APPROVAL, IF ANY:

NEW MEXICO OIL CONSERVATION COMMISSION  
WELL LOCATION AND ACREAGE DEDICATION PLAT

Form C-128  
Supersedes C-128  
Effective 1-1-65

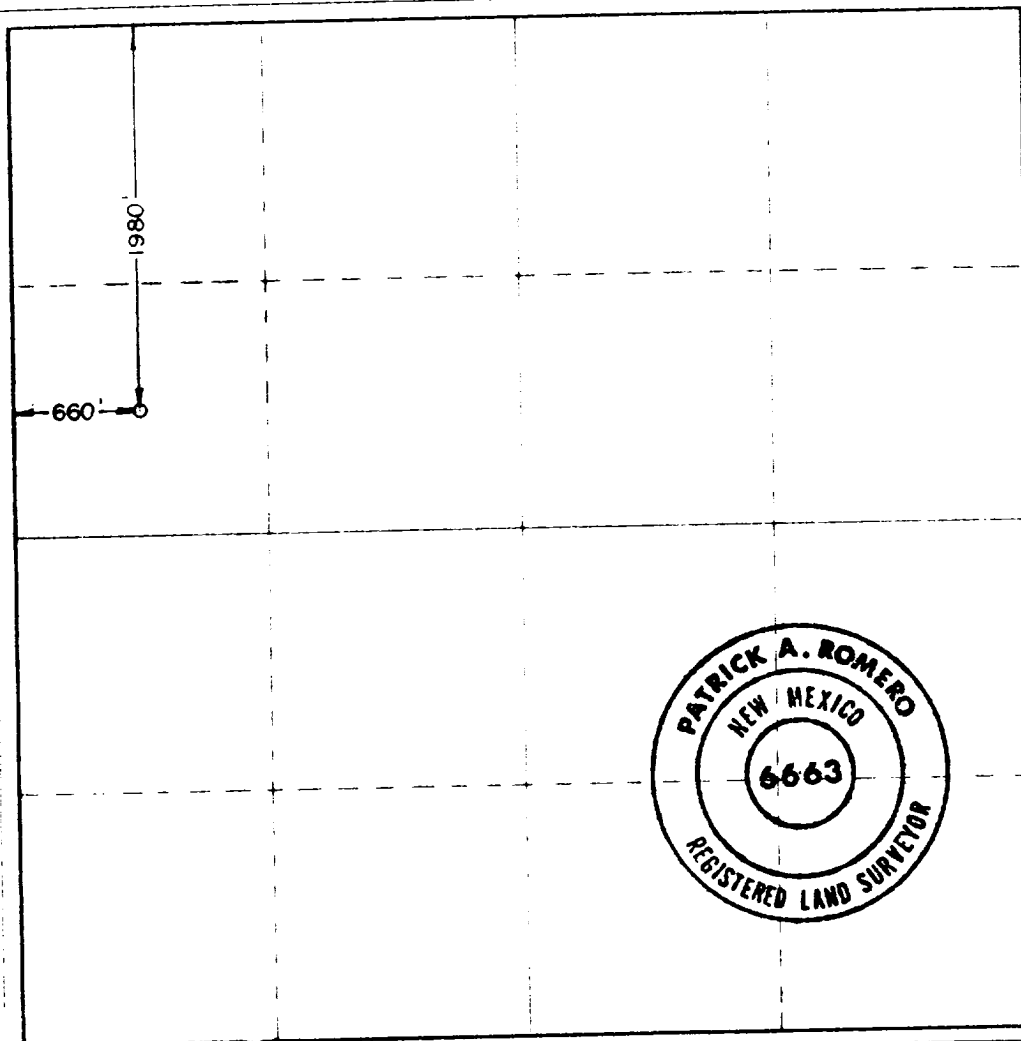
All distances must be from the outer boundaries of the Section

Operator <b>Coronado Exploration Corp.</b>		Lease <b>J.P. White "D"</b>		Acres <b>3</b>	
Section <b>E 20</b>		Range <b>10 South</b>		County <b>Chaves</b>	
Year <b>1980</b>		Feet from the North <b>660</b>		Feet from the West <b>West</b>	
Producing Formations <b>3761. Gr</b>		Port <b>ind Racetrack SA</b>		Section <b>40</b>	

1. Outline the acreage dedicated to the subject well by colored pencil or hatchure marks on the plat below.
2. If more than one lease is dedicated to the well, outline each and identify the ownership thereof (both as to working interest and royalty).
3. If more than one lease of different ownership is dedicated to the well, have the interests of all owners been consolidated by communitization, unitization, force-pooling, etc?

☐ Yes ☒ No If answer is "yes," type of consolidation \_\_\_\_\_

If answer is "no," list the owners and tract descriptions which have actually been consolidated. (Use reverse side of this form if necessary.) ~~All leases held by operator and participating parties~~  
No allowable will be assigned to the well until all interests have been consolidated (by communitization, unitization, forced-pooling, or otherwise) or until a non-standard unit, eliminating such interests, has been approved by the Commission.



CERTIFICATION

I hereby certify that the information contained herein is true and complete to the best of my knowledge and belief

*[Signature]*

Phelps White

Engineer

Coronado Exploration Corp.

April 28, 1980

I hereby certify that the well location shown on this plat was plotted from field notes of actual surveys made by me or under my supervision, and that the same is true and correct to the best of my knowledge and belief

April 25, 1980

Certificate No **JOHN W. WEST 876**  
**PATRICK A. ROMERO 6663**  
**Ronald J. Eidson 3239**