

UNITED STATES
DEPARTMENT OF THE INTERIOR
GEOLOGICAL SURVEY

30-005-60722

5. LEASE DESIGNATION AND SERIAL NO.

NM 11960

6. IF INDIAN, ALLOTTEE OR TRIBE NAME

7. UNIT AGREEMENT NAME

8. FARM OR LEASE NAME

FEDERAL 8

9. WELL NO.

1

10. FIELD AND POOL, OR WILDCAT

WILDCAT

11. SEC., T., R., M., OR BLK.
AND SURVEY OR AREA

UL-4 SEC. 8, T. 5 S., R. 29 E.

12. COUNTY OR PARISH 13. STATE

CHAVES

NEW MEXICO

APPLICATION FOR PERMIT TO DRILL, DEEPEN, OR PLUG BACK

1a. TYPE OF WORK

DRILL ☒DEEPEN ☐PLUG BACK ☐

b. TYPE OF WELL

OIL
WELL ☒GAS
WELL ☐

OTHER

SINGLE
ZONE ☒MULTIPLE
ZONE ☐

2. NAME OF OPERATOR

NRM PETROLEUM CORPORATION

3. ADDRESS OF OPERATOR

900 BUILDING OF THE SOUTHWEST, MIDLAND, TEXAS 79701

4. LOCATION OF WELL (Report location clearly and in accordance with any State requirements.)*
At surface

1980' FNL AND 1980' FEL OF SECTION 8

At proposed prod. zone

14. DISTANCE IN MILES AND DIRECTION FROM NEAREST TOWN OR POST OFFICE*

9 MILES WEST-NORTHWEST OF KENNA, NEW MEXICO

15. DISTANCE FROM PROPOSED*

LOCATION TO NEAREST
PROPERTY OR LEASE LINE, FT.
(Also to nearest drig. unit line, if any)

660'

16. NO. OF ACRES IN LEASE

1839.31

17. NO. OF ACRES ASSIGNED
TO THIS WELL

40

18. DISTANCE FROM PROPOSED LOCATION*
TO NEAREST WELL, DRILLING, COMPLETED,
OR APPLIED FOR, ON THIS LEASE, FT.

-

19. PROPOSED DEPTH

8150

20. ROTARY OR CABLE TOOLS

ROTARY

21. ELEVATIONS (Show whether DF, RT, GR, etc.)

4367.3 GR

22. APPROX. DATE WORK WILL START*

UPON APPROVAL

23.

PROPOSED CASING AND CEMENTING PROGRAM

SIZE OF HOLE	SIZE OF CASING	WEIGHT PER FOOT	SETTING DEPTH	QUANTITY OF CEMENT
17-1/2"	12-3/4"	33.38	330'	550 sacks (TO CIRCULATE)
11"	8-5/8"	24#K55&32#H40	3400'	1000 sacks
7-7/8"	4-1/2"	10.5&11.6# K-55	8150'	500 sacks

SEE ATTACHED FOR: SUPPLEMENTAL DRILLING DATA
BOP SKETCH
SURFACE USE AND OPERATIONS PLAN

RECEIVED

RECEIVED

JUN 9 1980

JUN 3 1980

U.S. GEOLOGICAL SURVEY
ARTESIA, NEW MEXICOO. C. D.
ARTESIA, OFFICE

IN ABOVE SPACE DESCRIBE PROPOSED PROGRAM: If proposal is to deepen or plug back, give data on present productive zone and proposed new productive zone. If proposal is to drill or deepen directionally, give pertinent data on subsurface locations and measured and true vertical depths. Give blowout preventer program, if any.

24.

SIGNED

Arthur R. Brown

TITLE

Agent for
NRM PETROLEUM CORPORATION

DATE

JUNE 2, 1980

(This space for Federal or State office use)

PERMIT NO.

APPROVAL DATE

APPROVED BY

TITLE

DATE

CONDITIONS OF APPROVAL, IF ANY:

NEW MEXICO OIL CONSERVATION COMMISSION
WELL LOCATION AND ACREAGE DEDICATION PLAT

Form C-102
Supersedes C-128
Effective 1-1-65

All distances must be from the outer boundaries of the Section

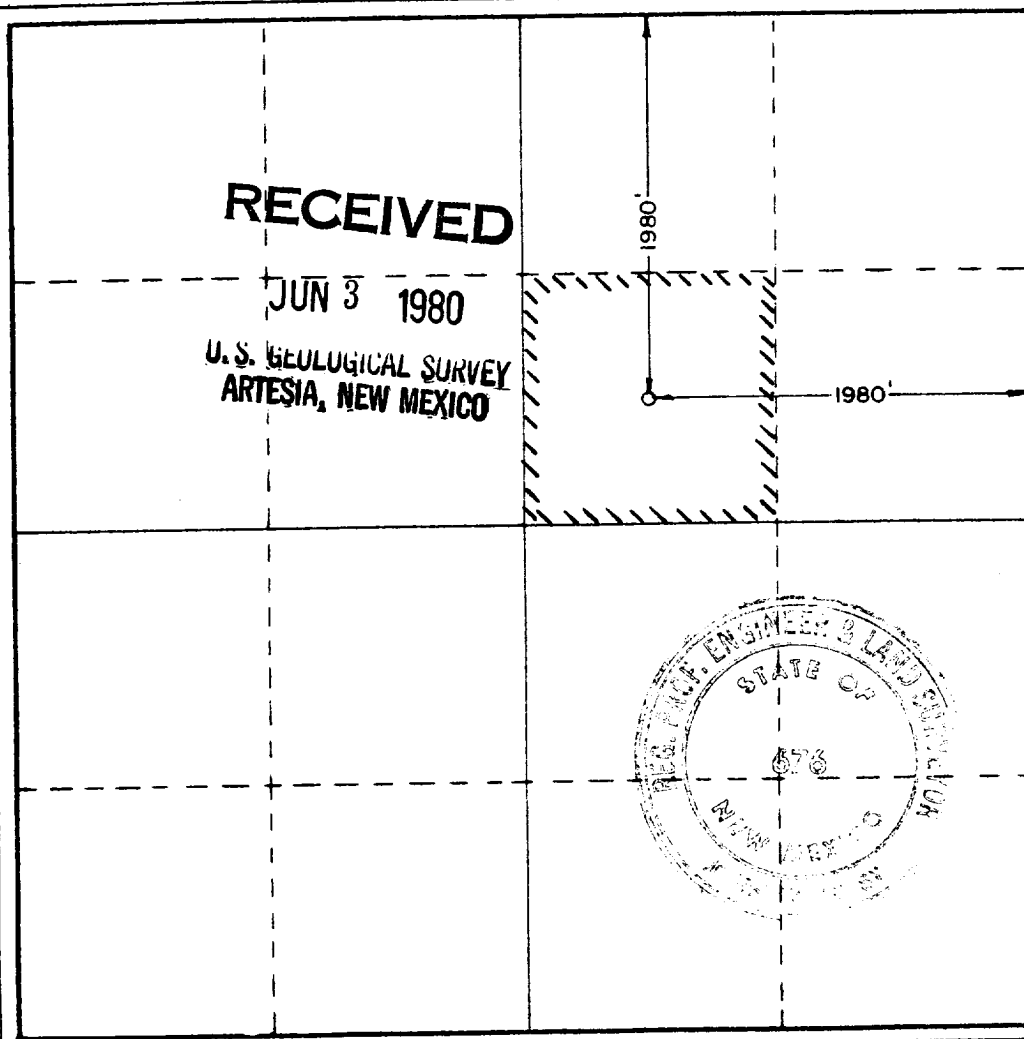
Operator NRM Petroleum Corp.		Lease Federal 8		Well No. 1
Unit Letter G	Section 8	Township 5 South	Range 29 East	County Chaves
Actual Footage Location of Well: 1980 feet from the North line and 1980 feet from the East line				
Ground Level Elev. 4367.3	Producing Formation ELLENBURGER	Pool WILDCAT	Dedicated Acreage: 40 Acres	

1. Outline the acreage dedicated to the subject well by colored pencil or hachure marks on the plat below.
2. If more than one lease is dedicated to the well, outline each and identify the ownership thereof (both as to working interest and royalty).
3. If more than one lease of different ownership is dedicated to the well, have the interests of all owners been consolidated by communitization, unitization, force-pooling, etc?

☐ Yes ☐ No If answer is "yes," type of consolidation _____

If answer is "no," list the owners and tract descriptions which have actually been consolidated. (Use reverse side of this form if necessary.) _____

No allowable will be assigned to the well until all interests have been consolidated (by communitization, unitization, forced-pooling, or otherwise) or until a non-standard unit, eliminating such interests, has been approved by the Commission.



CERTIFICATION

I hereby certify that the information contained herein is true and complete to the best of my knowledge and belief.

Arthur R. Brown
Name
Arthur R. Brown

Position
AGENT FOR

Company
NRM PETROLEUM CORPORATION

Date
JUNE 2, 1980

I hereby certify that the well location shown on this plat was plotted from field notes of actual surveys made by me or under my supervision, and that the same is true and correct to the best of my knowledge and belief.

Date Surveyed
April 25, 1980

Registered Professional Engineer and/or Land Surveyor

John W. West
Certificate No. **JOHN W. WEST 678**
PATRICK A. ROMERO 6663
Ronald J. Eideen 3230



N - O.C.D. COPY

United States Department of the Interior

GEOLOGICAL SURVEY

P. O. Drawer U
Artesia, New Mexico 88210

RECEIVED

JUN 9 1980

O. C. D.
ARTESIA, OFFICE

June 6, 1980

NRM Petroleum Corporation
900 Building of the Southwest
Midland, Texas 79701

Gentlemen:

NRM PETROLEUM CORPORATION
Federal 8 No. 1
1980 FNL 1980 FEL Sec. 8 T.5S R.29E
Chaves County Lease No. NM-11960

Above Data Required on Well Sign

Your APPLICATION FOR PERMIT TO DRILL the above-described well to a depth of 8,150 feet to test the Ellenburger is hereby approved subject to compliance with the OIL AND GAS OPERATING REGULATIONS (30 CFR 221) and the following conditions:

1. Drilling operations authorized are subject to compliance with the attached General Requirements for Oil and Gas Operations on Federal Leases, dated July 1, 1978.
2. Prior to commencing construction of road, pad, or other associated developments, operator will provide the dirt contractor with a copy of the Surface Use Plan and these Conditions of Approval including the attached General Requirements.
3. All access roads will be limited to a 12 foot wide driving surface, excluding turnarounds. Surface disturbance associated with road construction will be limited to 20 feet in width.
4. Submit a Daily Report of Operations from spud date until the well is completed and the Well Completion Report (form 9-330) is filed. The report should not be less than 8" x 5" in size and each page should identify the well.
5. All permanent above-ground structures and equipment shall be painted in accordance with the attached Painting Guidelines. The color used should simulate Sandstone Brown (Federal Standard No. 595A, color 20318 or 30318).
6. Before drilling below the 8-5/8" casing, blowout preventer assembly will consist of a minimum of two ram type preventers.
7. A kelly cock will be installed and maintained in operable condition.

SUPPLEMENTAL DRILLING DATA

NRM PETROLEUM CORPORATION
WELL NO. 1 FEDERAL 8

1. SURFACE FORMATION: Quaternary.

2. ESTIMATED TOPS OF GEOLOGIC MARKERS:

San Andres	2242
Abo Sand	5600
Wolfcamp	6300
Canyon Lime	7040
Canyon Sand	7100
Mississippian Porosity	7588
Montoya	7697
Ellenburger	7725

3. ANTICIPATED POSSIBLE WATER AND HYDROCARBON BEARING ZONES:

Fresh Water	Above 300 feet
Gas	Montoya
Gas	Ellenburger

4. PROPOSED CASING AND CEMENTING PROGRAM:

<u>CASING SIZE</u>	<u>SETTING DEPTH</u>		<u>WEIGHT</u>	<u>GRADE</u>	<u>JOINT</u>
	<u>FROM</u>	<u>TO</u>			
12-3/4"	0	300	33.38#	-	STC
8-5/8"	0	2400	24#	K-55	STC
	2400	3400	32#	H-40	STC
4-1/2"	0	600	11.6#	K-55	STC
	600	6200	10.5#	K-55	STC
	6200	8150	11.6#	K-55	STC

Depending on availability, equivalent weight and grade casing may be substituted for above.

12-3/4" surface casing will be cemented with 550 sacks of Class "C". Cement to circulate.

8-5/8" casing will be cemented with 700 sacks of Howco "Light", tailed in with 300 sacks of Class "C".

4-1/2" casing will be cemented with 200 sacks of Howco "Light" tailed in with 300 sacks of Class "H" with 3 percent gel.

Cement quantities and additives may be varied to best suit well conditions when casing is run.

5. PRESSURE CONTROL EQUIPMENT:

Pressure control equipment will consist of a double ram, Series 900 blow-out preventer with choke manifold and kill line.

Sketch of BOP equipment is attached.

6. CIRCULATING MEDIUM:

Surface to 300 feet: Fresh water with gel or lime as needed for viscosity control.

300 to 5400 feet: Brine water with salt gel as needed for viscosity control and lime as needed for pH control.

5400 to Total Depth: Low solids, salt gel and oil type drilling fluid conditioned as necessary for control of viscosity and water-loss. Weighted as necessary for well control.

7. AUXILIARY EQUIPMENT:

Drill string safety valves will be maintained on the rig floor in the open position while drilling operations are in progress.

8. TESTING, CORING AND LOGGING PROGRAMS:

Drill stem tests will be made when samples, drilling time and logging data are sufficient to indicate a possible pay zone.

It is planned that electric logs will include a CNL-FDC with Gama Ray and Dual Laterlog, or equivalent.

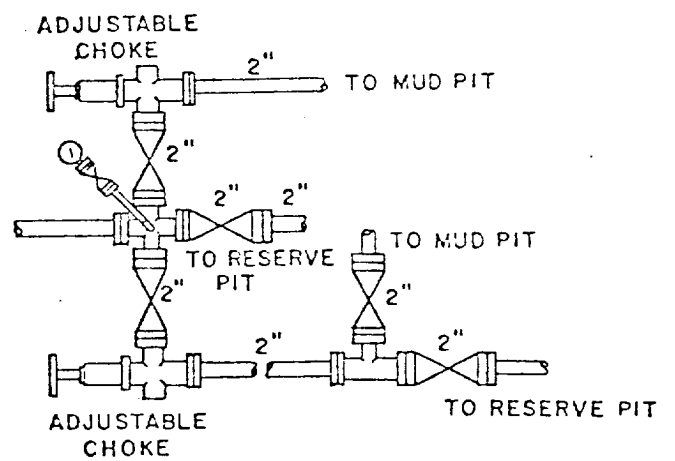
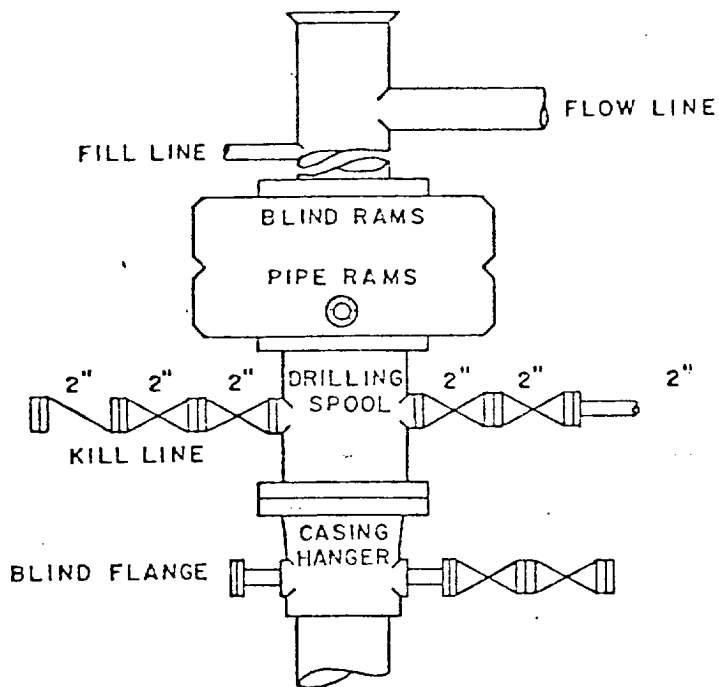
No coring is planned.

9. ABNORMAL PRESSURES, TEMPERATURES OR HYDROGEN SULFIDE GAS:

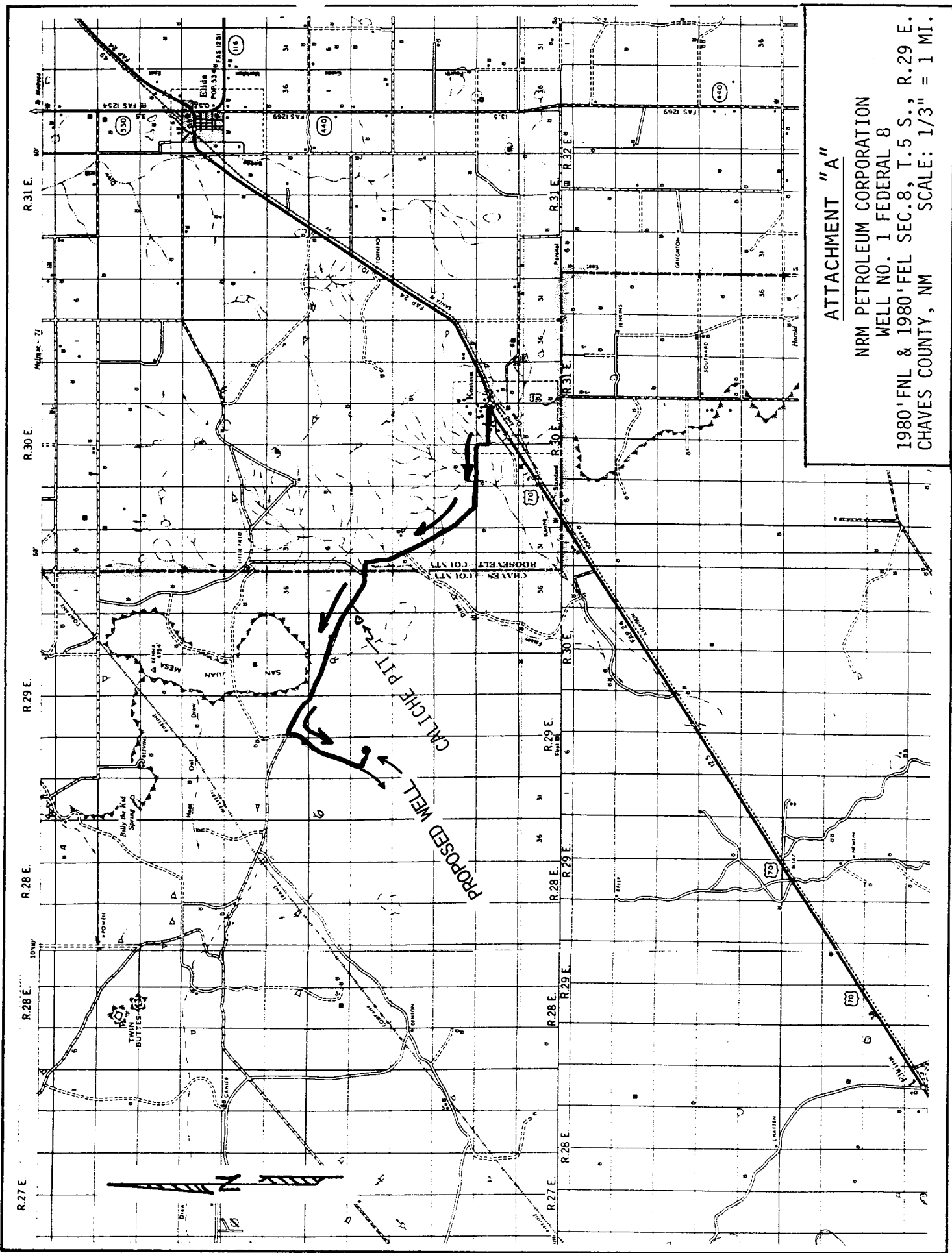
None anticipated.

10. ANTICIPATED STARTING DATE:

It is planned that drilling operations will commence upon approval and that drilling and completion operations will require about 60 days.

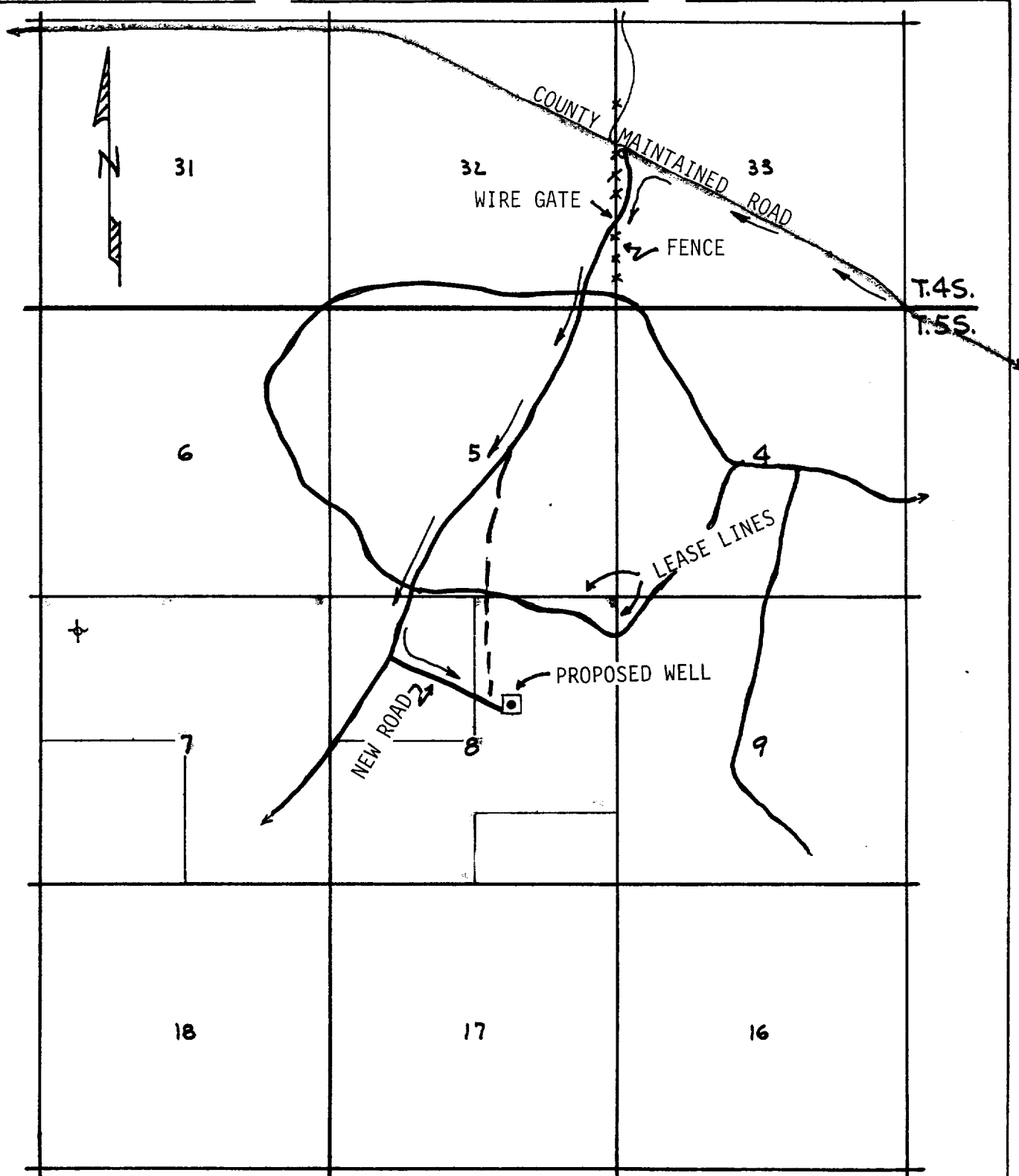


SERIES 900 BOP STACK



ATTACHMENT "A"

NRM PETROLEUM CORPORATION
WELL NO. 1 FEDERAL 8
1980' FNL & 1980' FEL SEC. 8, T.5 S., R.29 E.
CHAVES COUNTY, NM
SCALE: 1/3" = 1 MI.

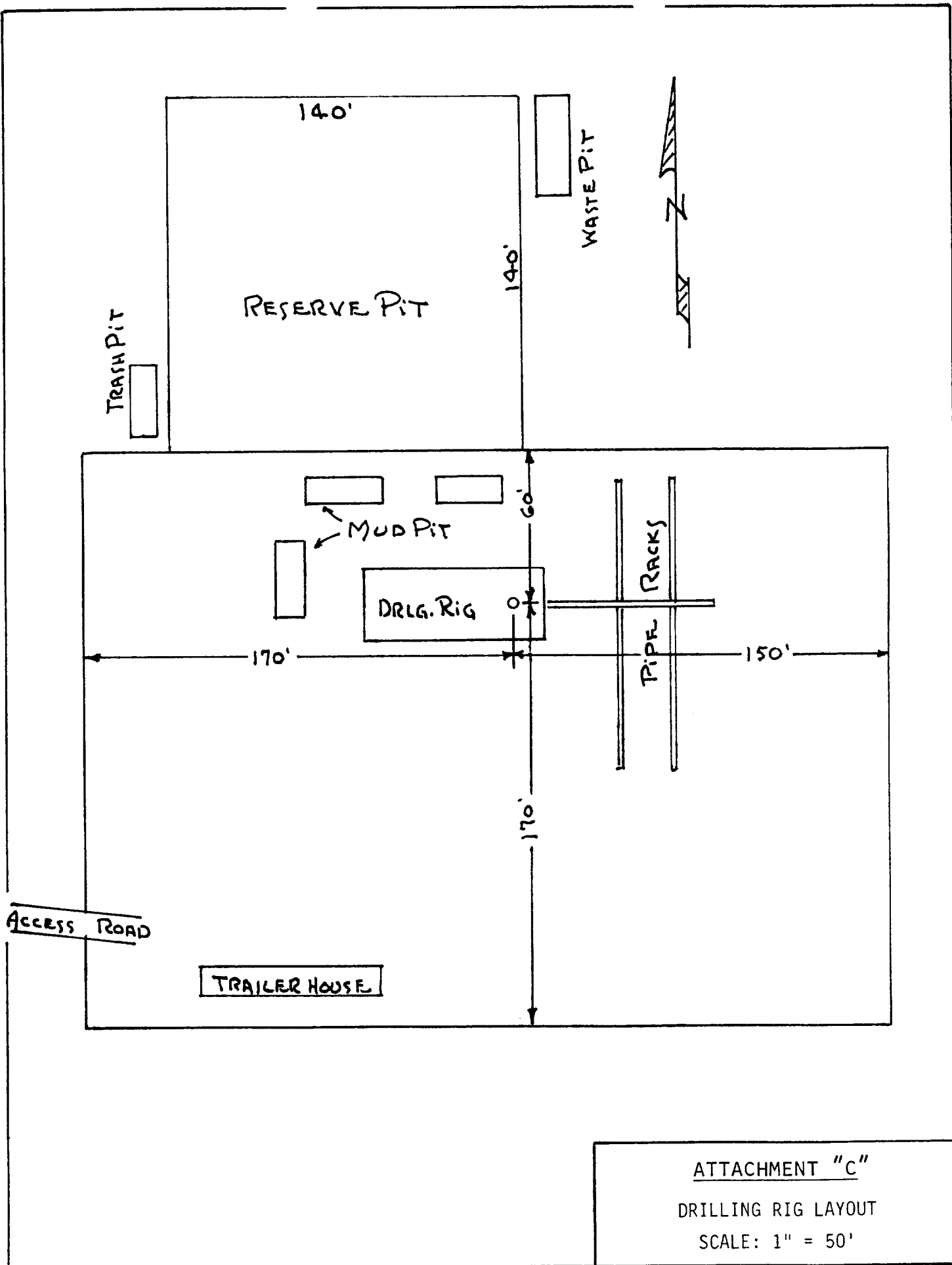


LEGEND:

- ⊕ Plugged Well
- Proposed Well
- County Maintained Road
- Two-Track Ranch Road
- Jeep Trail
- New Road

ATTACHMENT "B"

NRM PETROLEUM CORPORATION
 WELL NO. 1 FEDERAL 8
 1980'FNL & 1980'FEL SEC.8, T.5 S., R.29 E.
 CHAVES COUNTY, NM SCALE: 2" = 1 MI.



ARTHUR R. BROWN
101 E. Marland
Hobbs, New Mexico 88240
Office (505) 397-2767
Home (505) 392-5642

PETROLEUM
ENGINEERING & REGULATORY
SERVICES

JAMES A. KNAUF
1501 W. Missouri
Artesia, New Mexico 88210
Phone (505) 746-4138

101 E. Marland
Hobbs, New Mexico 88240

June 2, 1980

U.S. Geological Survey
P. O. Drawer U
Artesia, New Mexico 88210

Gentlemen:

This is to advise that Mr. Cecil Tucker, NRM Petroleum Corporation, has made arrangements with Mr. Pat Boone of Littlefield, Texas, the surface owner, concerning access road and the drilling of well No. 1 Federal 8 in the SW $\frac{1}{4}$ NE $\frac{1}{4}$ sec. 8, T. 5 S., R. 29 E., Chaves County, New Mexico, lease NM 11960.

In accordance with this agreement, work to be done after the well is drilled is as follows:

If the well is completed for production, the well location will be cleaned and the drilling pits will be filled and leveled as soon as they are dry.

If the well is plugged and abandoned, all pits will be filled and leveled, the well location will be cleaned up, and the access road and well pad will be left in place.

Yours sincerely,



Arthur R. Brown, Agent for
NRM PETROLEUM CORPORATION

ARB/bb