

Hold For
C-105

TP 105 3

PI 105 3

CA 1440

3-10-10 105 3

4-10-10 105 3 ~~105~~ 164

Run to 105 3

105 3
105 3
105 3

MEXICO OIL CONSERVATION COMMISS.
WELL LOCATION AND ACREAGE DEDICATION PLAT
MAR - 1 1982

RECEIVED

Form C-102
Supersedes C-128
Effective 1-1-65

All distances must be from the outer boundaries of the Section.

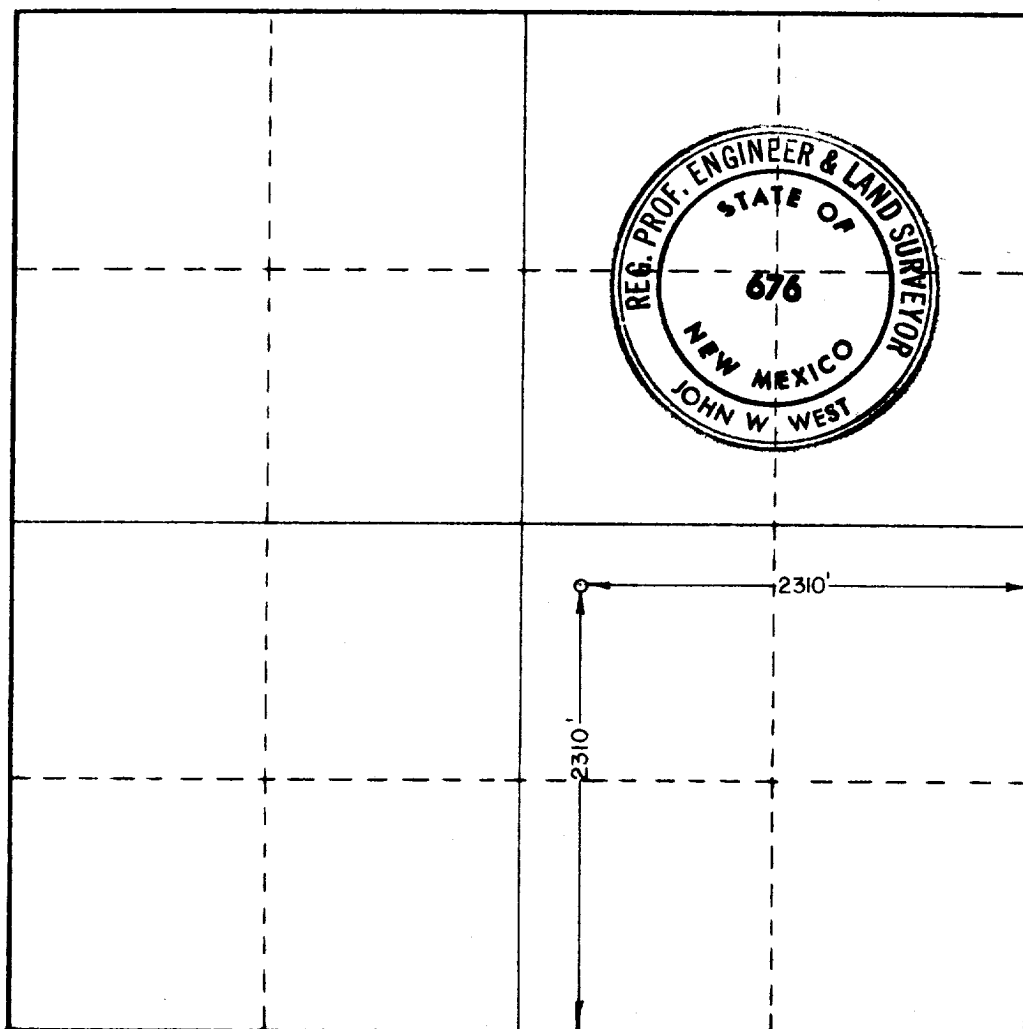
Operator Cibola Energy Corporation			Lease Sherrill		O. C. D. ARTESIA, OFFICE	Well No. 1
Unit Letter J	Section 6	Township 11 South	Range 28 East	County Chaves		
Actual Footage Location of Well: 2310 feet from the South line and 2310 feet from the East line						
Ground Level Elev. 3728.9	Producing Formation Penrose		Pool Wildcat		Dedicated Acreage: 40 Acres	

1. Outline the acreage dedicated to the subject well by colored pencil or hachure marks on the plat below.
2. If more than one lease is dedicated to the well, outline each and identify the ownership thereof (both as to working interest and royalty).
3. If more than one lease of different ownership is dedicated to the well, have the interests of all owners been consolidated by communitization, unitization, force-pooling, etc?

☒ Yes ☐ No If answer is "yes," type of consolidation See Reverse Side

If answer is "no," list the owners and tract descriptions which have actually been consolidated. (Use reverse side of this form if necessary.) _____

No allowable will be assigned to the well until all interests have been consolidated (by communitization, unitization, forced-pooling, or otherwise) or until a non-standard unit, eliminating such interests, has been approved by the Commission.



CERTIFICATION

I hereby certify that the information contained herein is true and complete to the best of my knowledge and belief.

Anita Vigil
Name

Anita Vigil

Position

Drilling Secretary

Company

Cibola Energy Corporation

Date

2-25-82

I hereby certify that the well location shown on this plat was plotted from field notes of actual surveys made by me or under my supervision, and that the same is true and correct to the best of my knowledge and belief.

Date Surveyed

June 3, 1980

Registered Professional Engineer and/or Land Surveyor

John W. West

Certificate No. **JOHN W. WEST 676**
PATRICK A. ROMERO 6663
Ronald J. Eidson 3239

3. Communitization is by force pooling. Leases not held by operator are:
Tenneco 12.5% and Selma Andrews Trust .78125%.

MEXICO OIL CONSERVATION COMMISSION
WELL LOCATION AND ACREAGE DEDICATION PLAT

Form C-102
Supersedes C-128
Effective 1-1-85

All distances must be from the outer boundaries of the Section

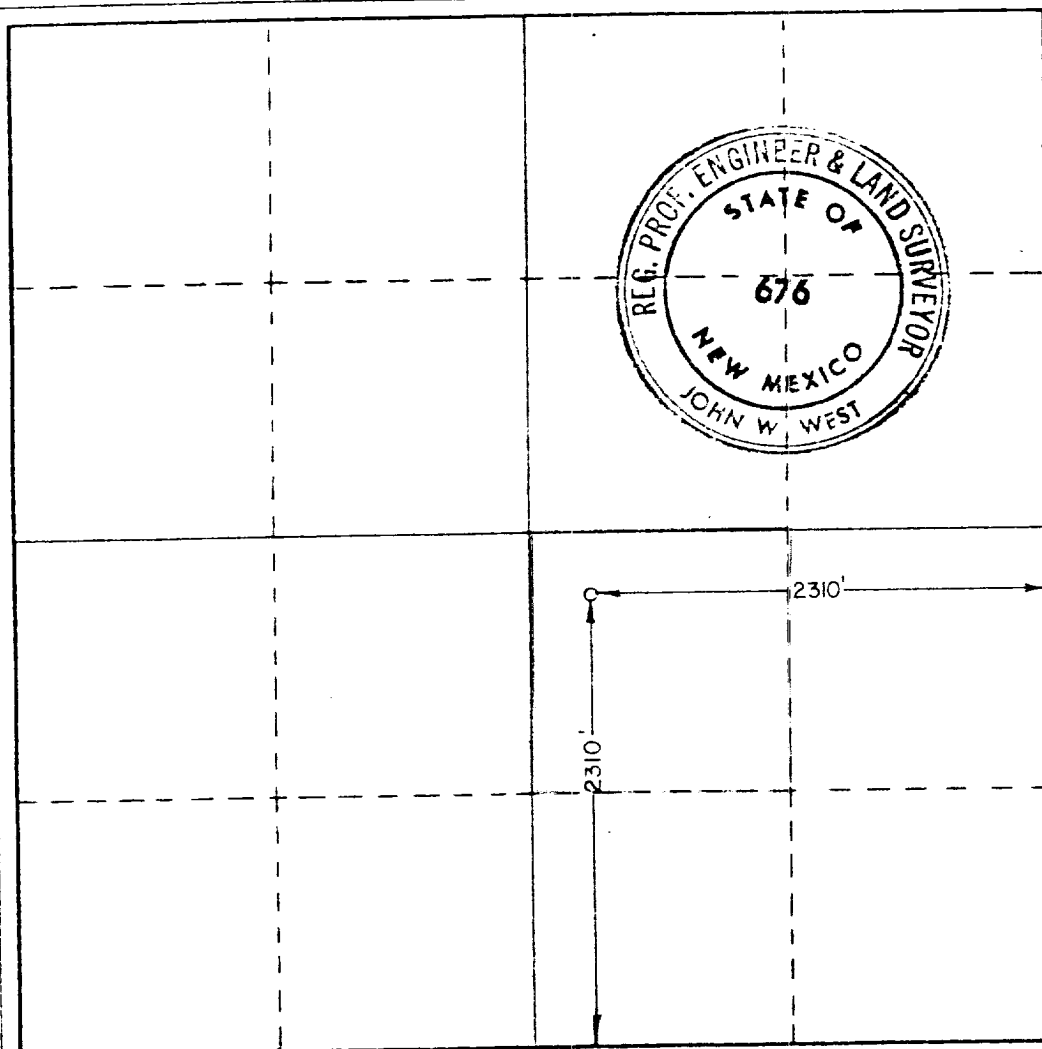
Operator <i>Cibola Energy</i> Coronado Exploration Corp.		Lease Sherrill		Well No. 1
Section J	Section 6	Township 11 South	Range 28 East	County Chaves
Actual Location of Well: 2310 feet from the South line and 2310 feet from the East line				
Ground Level Elev. 3728.9	Producing Formation Penrose	Pool Wildcat	Dedicated Acreage 40 Acres	

1. Outline the acreage dedicated to the subject well by colored pencil or hatchure marks on the plat below.
2. If more than one lease is dedicated to the well, outline each and identify the ownership thereof (both as to working interest and royalty).
3. If more than one lease of different ownership is dedicated to the well, have the interests of all owners been consolidated by communitization, unitization, force-pooling, etc?

☒ Yes ☐ No If answer is "yes," type of consolidation See Reverse Side

If answer is "no," list the owners and tract descriptions which have actually been consolidated. (Use reverse side of this form if necessary.) _____

No allowable will be assigned to the well until all interests have been consolidated (by communitization, unitization, forced-pooling, or otherwise) or until a non-standard unit, eliminating such interests, has been approved by the Commission.



CERTIFICATION

I hereby certify that the information contained herein is true and complete to the best of my knowledge and belief.

Anita Vigil
Name

Anita Vigil

Position

Drilling Secretary

Company

Cibola Energy Corporation

Date

2-25-82

I hereby certify that the well location shown on this plat was plotted from field notes of actual surveys made by me or under my supervision, and that the same is true and correct to the best of my knowledge and belief.

Date Surveyed

June 3, 1980

Registered Professional Engineer and/or Land Surveyor

John W. West

Certificate No. **JOHN W. WEST 676**
PATRICK A. ROMERO 6862
Ronald J. Eidson 3239

3. Communitization is by force pooling. Leases not held by operator are:
Tenneco 12.5% and Selma Andrews Trust .78125%.

MEXICO OIL CONSERVATION COMMISSION WELL LOCATION AND ACREAGE DEDICATION PLAT

Form O-100
Supersedes O-104
Effective 1-1-65

All distances must be from the outer boundaries of the Section.

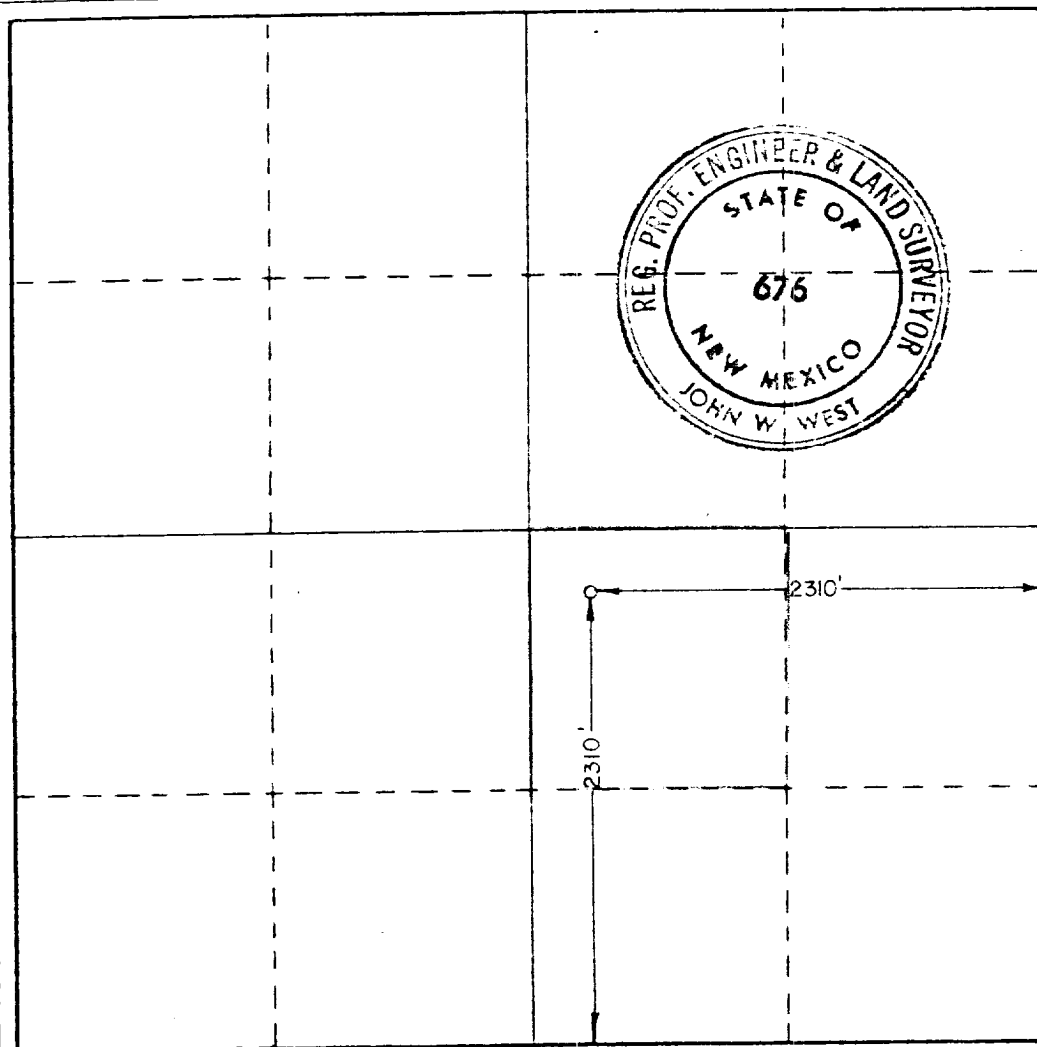
Operator <u>Cibola Energy Corporation</u>		Lease <u>Sherrill</u>		Well No. <u>1</u>
Section <u>6</u>	Township <u>11 South</u>	Range <u>28 East</u>	County <u>Chaves</u>	
Actual Location of Well: <u>2310</u> feet from the <u>South</u> line and <u>2310</u> feet from the <u>East</u> line				
Surface Elevation <u>3728.9</u>	Producing Formation <u>Penrose</u>	Pool <u>Wildcat</u>	Dedicated Acreage <u>40</u>	

1. Outline the acreage dedicated to the subject well by colored pencil or hatchure marks on the plat below.
2. If more than one lease is dedicated to the well, outline each and identify the ownership thereof (both as to working interest and royalty).
3. If more than one lease of different ownership is dedicated to the well, have the interests of all owners been consolidated by communitization, unitization, force-pooling, etc?

☒ Yes ☐ No If answer is "yes," type of consolidation See Reverse Side

If answer is "no," list the owners and tract descriptions which have actually been consolidated (Use reverse side of this form if necessary.) _____

No allowable will be assigned to the well until all interests have been consolidated (by communitization, unitization, forced-pooling, or otherwise) or until a non-standard unit, eliminating such interests, has been approved by the Commission.



CERTIFICATION

I hereby certify that the information contained herein is true and complete to the best of my knowledge and belief.

Anita Vigil

Name

Anita Vigil

Position

Drilling Secretary

Company

Cibola Energy Corporation

Date

2-25-82

I hereby certify that the well location shown on this plat was plotted from field notes of actual surveys made by me or under my supervision, and that the same is true and correct to the best of my knowledge and belief.

Date Surveyed

June 3, 1980

Registered Professional Engineer and/or Land Surveyor

John W. West

Certificate No. JOHN W. WEST 676
PATRICK A. ROMERO 6862
Ronald J. Eidson 3239

0 330 660 990 1320 1650 1980 2310 2640 2970 3300 3630 3960 4290 4620 4950 5280 5610 5940 6270 6600 6930 7260 7590 7920 8250 8580 8910 9240 9570 9900

3. Communitization is by force pooling. Leases not held by operator are:
Tenneco 12.5% and Selma Andrews Trust .78125%.

MEXICO OIL CONSERVATION COMMISSION
WELL LOCATION AND ACREAGE DEDICATION PLAT

Form C-102
Supersedes C-128
Effective 1-1-85

All distances must be from the outer boundaries of the Section

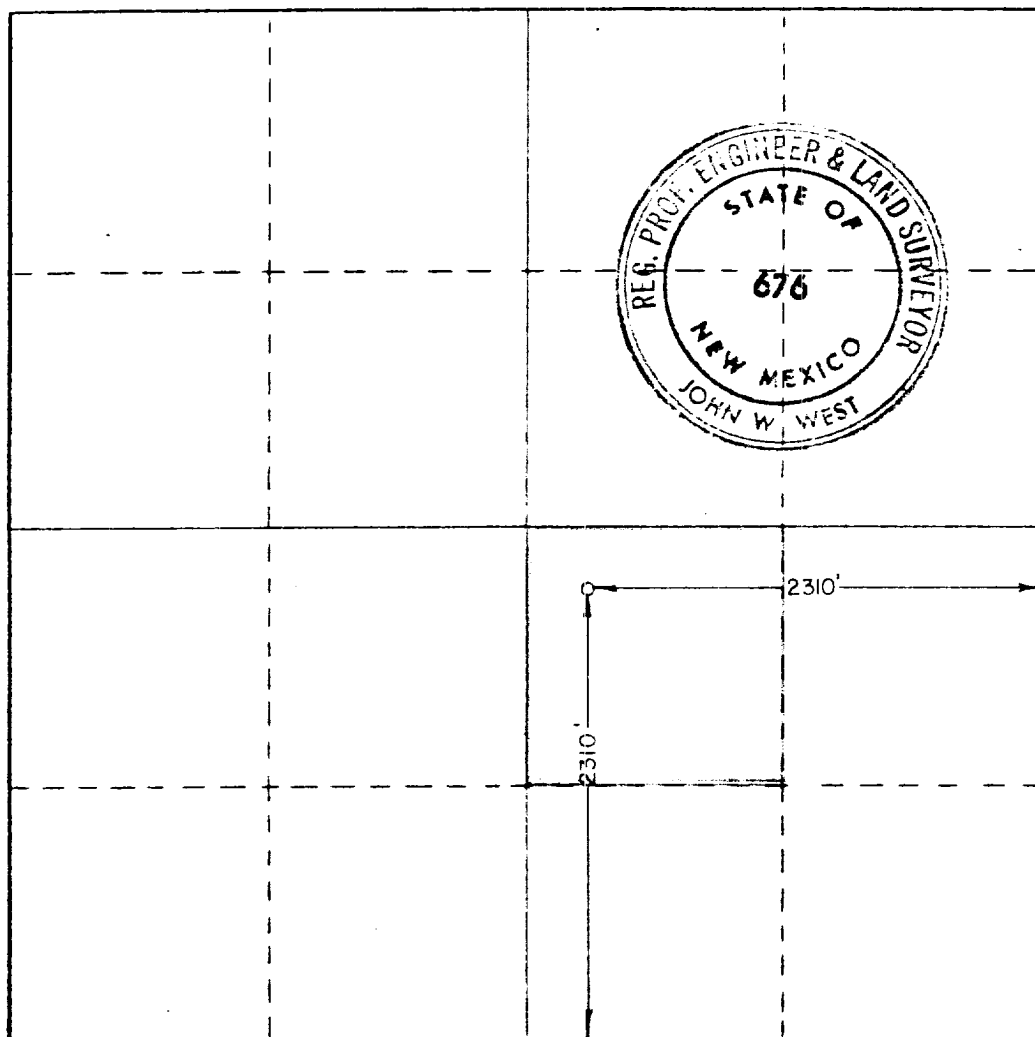
Applicant <i>Cibola Energy</i> Comrade Exploration Corp.			Lease Sherrill		Well No. 1
Section J	Section 6	Township 11 South	Range 28 East	County Chaves	
Approximate Location of Well: 2310 feet from the South line and 2310 feet from the East line					
Ground Level Elev 3728.9	Producing Formation Penrose	Pool Wildcat	Dedicated Acreage 40 Acres		

1. Outline the acreage dedicated to the subject well by colored pencil or hatchure marks on the plat below.
2. If more than one lease is dedicated to the well, outline each and identify the ownership thereof (both as to working interest and royalty).
3. If more than one lease of different ownership is dedicated to the well, have the interests of all owners been consolidated by communitization, unitization, force-pooling, etc?

☒ Yes ☐ No If answer is "yes," type of consolidation See Reverse Side

If answer is "no," list the owners and tract descriptions which have actually been consolidated. (Use reverse side of this form if necessary.)

No allowable will be assigned to the well until all interests have been consolidated (by communitization, unitization, forced-pooling, or otherwise) or until a non-standard unit, eliminating such interests, has been approved by the Commission.



CERTIFICATION

I hereby certify that the information contained herein is true and complete to the best of my knowledge and belief.

Anita Vigil

Name

Anita Vigil

Position

Drilling Secretary

Company

Cibola Energy Corporation

Date

2-25-82

I hereby certify that the well location shown on this plat was plotted from field notes of actual surveys made by me or under my supervision, and that the same is true and correct to the best of my knowledge and belief.

Date Surveyed

June 3, 1980

Registered Professional Engineer and/or Land Surveyor

John W. West

Certificate No. JOHN W. WEST 676
PATRICK A. ROMERO 6862
Ronald J. Eidson 3239

3. Communitization is by force pooling. Leases not held by operator are:
Tenneco 12.5% and Selma Andrews Trust .78125%.

MEXICO OIL CONSERVATION COMMISSION WELL LOCATION AND ACREAGE DEDICATION PLAT

Form C-102
Supersedes C-128
Effective 1-1-85

All distances must be from the outer boundaries of the Section

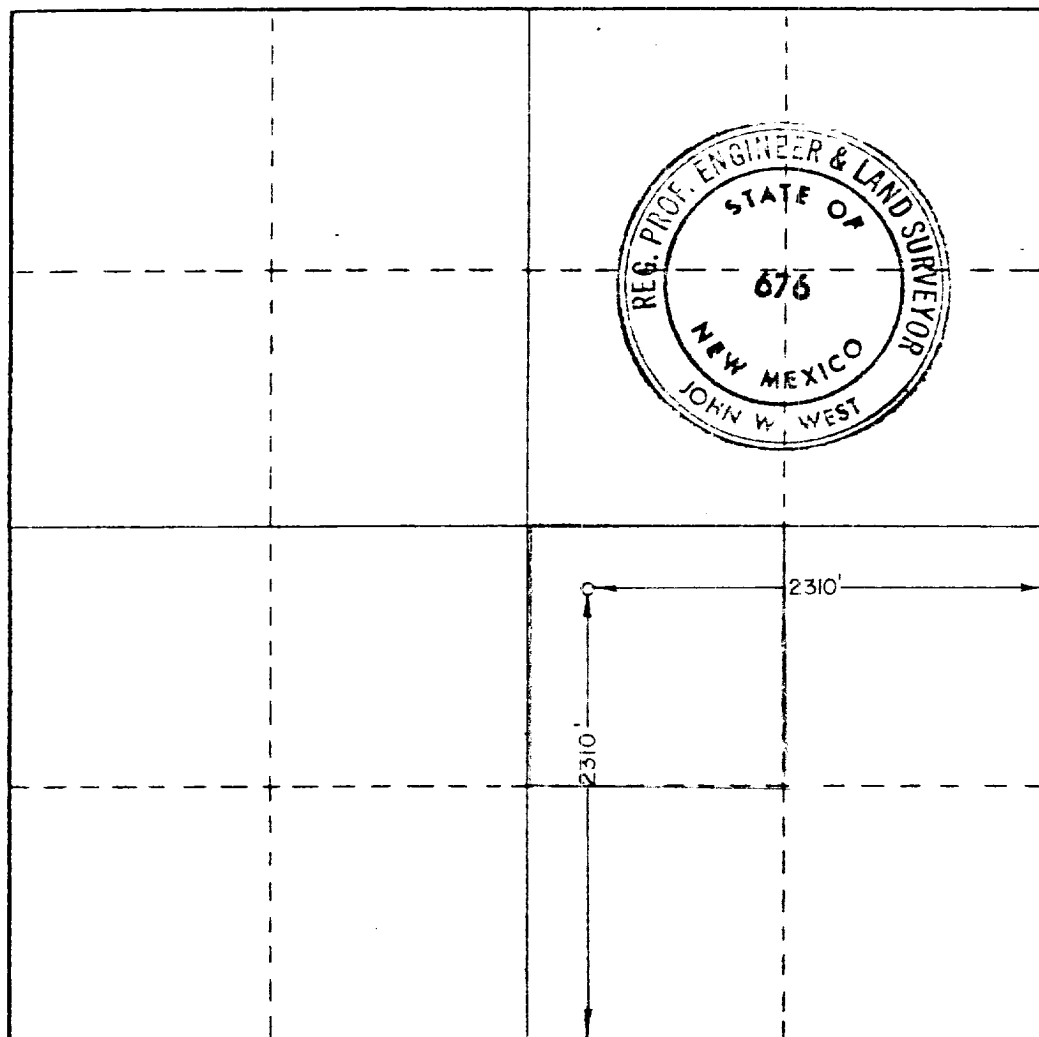
Operator <u>Cibola Energy Corporation</u>			Lease <u>Sherrill</u>		Well No. <u>1</u>
Section <u>J</u>	Section <u>6</u>	Township <u>11 South</u>	Range <u>28 East</u>	County <u>Chaves</u>	
Annual Forfeiture Location of Well: <u>2310</u> feet from the <u>South</u> line and <u>2310</u> feet from the <u>East</u> line					
Surface Elevation <u>3728.9</u>	Producing Formation <u>Penrose</u>	Pool <u>Wildcat</u>		Dedicated Acreage <u>40</u> Acres	

1. Outline the acreage dedicated to the subject well by colored pencil or hatchure marks on the plat below.
2. If more than one lease is dedicated to the well, outline each and identify the ownership thereof (both as to working interest and royalty).
3. If more than one lease of different ownership is dedicated to the well, have the interests of all owners been consolidated by communitization, unitization, force-pooling, etc?

☒ Yes ☐ No If answer is "yes," type of consolidation See Reverse Side

If answer is "no," list the owners and tract descriptions which have actually been consolidated (Use reverse side of this form if necessary.) _____

No allowable will be assigned to the well until all interests have been consolidated (by communitization, unitization, forced-pooling, or otherwise) or until a non-standard unit, eliminating such interests, has been approved by the Commission.



CERTIFICATION

I hereby certify that the information contained herein is true and complete to the best of my knowledge and belief.

Anita Vigil

Name

Anita Vigil

Position

Drilling Secretary

Company

Cibola Energy Corporation

Date

2-25-82

I hereby certify that the well location shown on this plat was plotted from field notes of actual surveys made by me or under my supervision, and that the same is true and correct to the best of my knowledge and belief.

Date Surveyed

June 3, 1980

Registered Professional Engineer and/or Land Surveyor

John W. West

Certificate No. JOHN W. WEST 676
PATRICK A. ROMERO 6862
Ronald J. Eidson 3239

0 330 660 990 1320 1650 1980 2310 2640 2970 3300 3630 3960 4290 4620 4950 5280 5610 5940 6270 6600 6930 7260 7590 7920 8250 8580 8910 9240 9570 9900

3. Communitization is by force pooling. Leases not held by operator are:
Tenneco 12.5% and Selma Andrews Trust .78125%.