

NO. OF COPIES RECEIVED	
DISTRIBUTION	
SANTA FE	1
FILE	1
U.S.G.S.	2
LAND OFFICE	2
OPERATOR	1

NEW MEXICO OIL CONSERVATION COMMISSION

RECEIVED 30-005-60726

JUN 9 1980

O. C. D.
ARTESIA, OFFICE

Form C-101
Revised 1-1-76

5A. Indefinite Type of Lease
STATE ☐ FEE ☒
5. State Oil & Gas Lease No.

APPLICATION FOR PERMIT TO DRILL, DEEPEN, OR PLUG BACK

1a. Type of Work
b. Type of Well
OIL WELL ☒ GAS WELL ☐ OTHER ☐
c. Name of Operator
Coronado Exploration Corp. ✓
d. Address of Operator
1005 Marquette NW Albuquerque, NM 87102
e. Location of Well
UNIT LETTER J LOCATED 2310 FEET FROM THE South LINE
AND 2310 FEET FROM THE East LINE OF SEC. 6 TWP. 11S RGE. 28E N40W
f. Field and Pool, or Wellbore
Chisum San Andres
g. Well No.
1
h. Name of Lease Name
Sherrill
i. County
Chaves
j. Proposed Depth
2275'
k. Formation
San Andres
l. Rotary or C.T.
C.T.
m. Elevations (Show whether DE, RI, etc.)
n. Kind & Status Plug. Bend
Statewide
o. Drilling Contractor
Cortez Drilling
p. Approx. Date Work will start
06-18-80

23. PROPOSED CASING AND CEMENT PROGRAM

SIZE OF HOLE	SIZE OF CASING	WEIGHT PER FOOT	SETTING DEPTH	SACKS OF CEMENT	EST. TOP
10"	8 5/8"	20#	230'	48	Circulate
8"	4 1/2"	9.5#	2275'	81	1925

We propose to:

Drill a 10" hole and set 8 5/8" casing to 230'; circulate cement to surface, WOC 12 hrs. Test hole for fluid entry. If bailed dry commence drilling an 8" hole to 2275'. Run DDL with Microlaterolog; GR-CNL-D. Set 4 1/2" casing; to either TD or above P1 zone depending on the outcome of the logs. In latter case open hole completion will be attempted, in former case casing will be perforated.

APPROVAL VALID
FOR 90 DAYS UNLESS
DRILLING COMMENCED,
EXPIRES 9-18-80

IN ABOVE SPACE DESCRIBE PROPOSED PROGRAM; IF PROPOSAL IS TO DEEPEN OR PLUG BACK, GIVE DATA ON PRESENT PRODUCTIVE ZONE AND PROPOSED NEW PRODUCTIVE ZONE. GIVE BLOWOUT PREVENTER PROGRAM, IF ANY.

I hereby certify that the information above is true and complete to the best of my knowledge and belief.

Signed Camela M. Brown Title Production Secretary Date 06-05-80

(This space for State Use)

APPROVED BY W. A. Gressett TITLE SUPERVISOR, DISTRICT II DATE JUN 18 1980

CONDITIONS OF APPROVAL, IF ANY:
Subject to Case 6934
6-25-80

Cement must be circulated to surface behind 8 5/8" casing

**NEW MEXICO OIL CONSERVATION COMMISSION
WELL LOCATION AND ACREAGE DEDICATION PLAT**

Form C-102
Supersedes C-128
Effective 1-1-65

All distances must be from the outer boundaries of the Section.

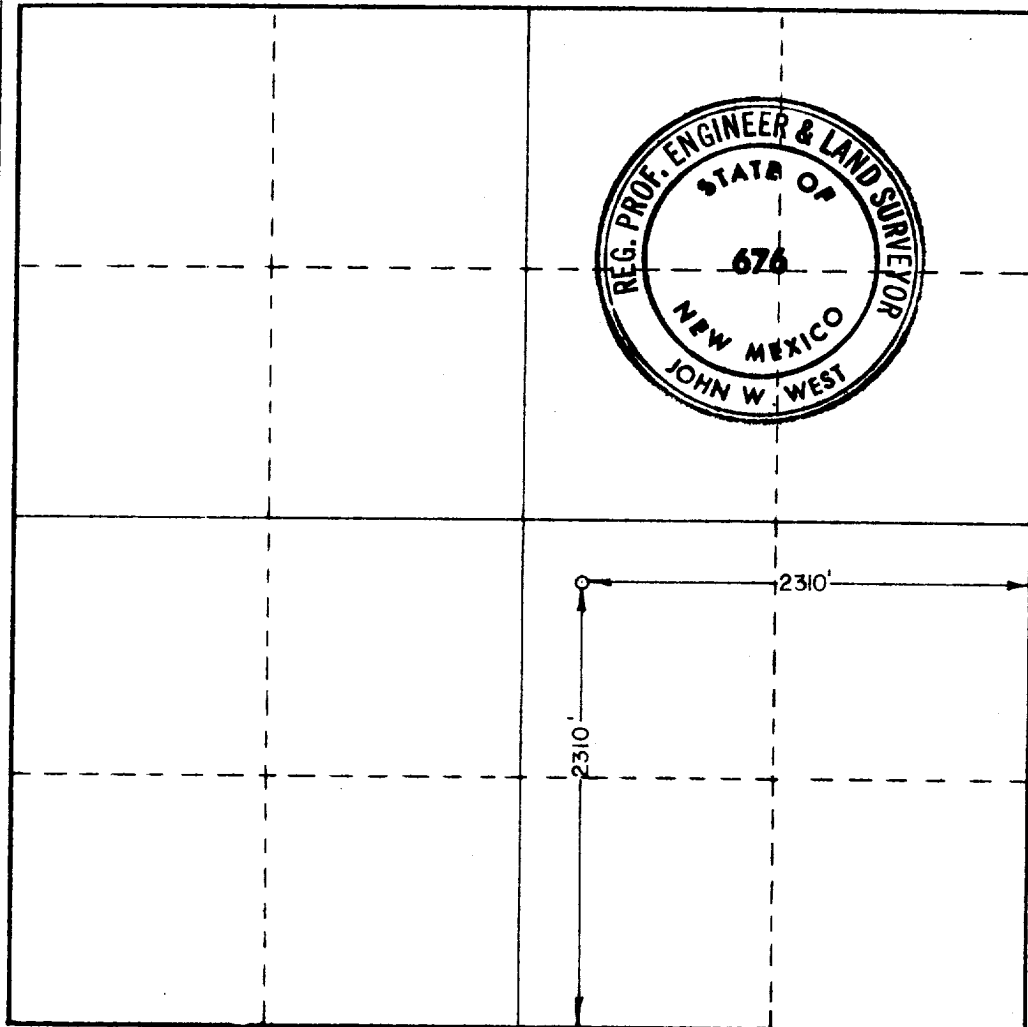
Operator Coronado Exploration Corp.			Lease Sherrill		Well No. 1
Unit Letter J	Section 6	Township 11 South	Range 28 East	County Chaves	
Actual Footage Location of Well: <div style="display: flex; justify-content: space-between;"> 2310 feet from the South line and 2310 feet from the East line </div>					
Ground Level Elev. 3728.9	Producing Formation San Andres	Pool <i>und</i> Chisum San Andres	Dedicated Acreage: 40 Acres		

1. Outline the acreage dedicated to the subject well by colored pencil or hachure marks on the plat below.
2. If more than one lease is dedicated to the well, outline each and identify the ownership thereof (both as to working interest and royalty).
3. If more than one lease of different ownership is dedicated to the well, have the interests of all owners been consolidated by communitization, unitization, force-pooling, etc?

☒ Yes ☐ No If answer is "yes," type of consolidation see reverse side

If answer is "no," list the owners and tract descriptions which have actually been consolidated. (Use reverse side of this form if necessary.) _____

No allowable will be assigned to the well until all interests have been consolidated (by communitization, unitization, forced-pooling, or otherwise) or until a non-standard unit, eliminating such interests, has been approved by the Commission.



CERTIFICATION

I hereby certify that the information contained herein is true and complete to the best of my knowledge and belief.

Pamela Bacon

Name

Pamela Bacon

Position

Production Sec.

Company

Coronado Exploration Corp.

Date

06-06-80

I hereby certify that the well location shown on this plat was plotted from field notes of actual surveys made by me or under my supervision, and that the same is true and correct to the best of my knowledge and belief.

Date Surveyed

June 3, 1980

Registered Professional Engineer
and/or Land Surveyor

John W. West

Certificate No. **JOHN W. WEST 676**
PATRICK A. ROMERO 6868
Ronald J. Fidens 7270



3. Communitization is by force pooling. Leases not held by operator are:
Tenneco 12.5%, White Ranch Minerals 4.296875%, Francisca Winston Trust
.78125%, Frederick Winston Trust .390625%, and Selma Andrews Trust .28125%.

RECEIVED

JUN 13 1980

O. C. D.
ARTESIA, OFFICE