

NO. OF COPIES RECEIVED	
DISTRIBUTION	
SANTA FE	1
FILE	1 ✓
U.S.G.S.	2
LAND OFFICE	
OPERATOR	1

NEW MEXICO OIL CONSERVATION COMMISSION

JUN 27 1980

O. C. D.
ARTESIA, OFFICE

30-005-60736
Form C-101
Revised 1-1-80

5A. Indicate Type of Lease
STATE ☐ FEE ☒

5. State Oil & Gas Lease No.

APPLICATION FOR PERMIT TO DRILL, DEEPEN, OR PLUG BACK

1a. Type of Work DRILL <input checked="" type="checkbox"/> DEEPEN <input type="checkbox"/> PLUG BACK <input type="checkbox"/>		7. Unit Agreement No.
b. Type of Well OIL WELL <input checked="" type="checkbox"/> GAS WELL <input type="checkbox"/> OTHER <input type="checkbox"/>		8. Name of Lessee
c. Zone SINGLE ZONE <input checked="" type="checkbox"/> MULTIPLE ZONE <input type="checkbox"/>		Mabel
2. Name of Operator Coronado Exploration Corp.		9. Well No. 2
3. Address of Operator 1005 Marquette NW Albuquerque, NM 87102		10. Field and Pool, or Wharft X Und. L.E. Ranch - SA
4. Location of Well UNIT LETTER H LOCATED 1980 FEET FROM THE North LINE AND 660 FEET FROM THE East LINE OF SEC. 30 TWP. 10S RGE. 28E NMPM		11. County Chaves
12. Proposed Depth 2325'		19A. Formation San Andres
20. Retray or C.T. C.T.		
21. Elevations (Show whether DE, RT, etc.) 3734.3 Gr	21A. Kind & Status Plug. Bond Statewide	22. Approx. Date Work will start 07-01-80

23. PROPOSED CASING AND CEMENT PROGRAM

SIZE OF HOLE	SIZE OF CASING	WEIGHT PER FOOT	SETTING DEPTH	SACKS OF CEMENT	EST. TOP
10"	8 5/8"	20#	325'	200	Circ.
8"	4 1/2"	9.5#	2325'	140	1825

We plan to drill a 10" hole to 325' and set 8 5/8" casing. We will circulate cement and WOC 18 hrs. If the hole is bailed dry we will commence to drill an 8" hole to 2325'. We will run SNP, Dual Induction, and Density logs. Depending on the outcome of the logs we will either set 4 1/2" casing or plug the hole.

APPROVAL VALID
FOR 30 DAYS
EXPIRES 9/30/80

IN ABOVE SPACE DESCRIBE PROPOSED PROGRAM; IF PROPOSAL IS TO DEEPEN OR PLUG BACK, GIVE DATA ON PRESENT PRODUCTIVE ZONE AND PROPOSED NEW PRODUCTIVE ZONE. GIVE BLOWOUT PREVENTER PROGRAM, IF ANY.

I hereby certify that the information above is true and complete to the best of my knowledge and belief.

CORONADO EXPLORATION CORP.

Signed BY: Patricia Barr Title Production Secretary Date June 26, 1980

(This space for State Use)

APPROVED BY: Mike Williams TITLE OIL AND GAS INSPECTOR DATE JUN 30 1980

CONDITIONS OF APPROVAL, IF ANY:

N. MEXICO OIL CONSERVATION COMMISS.
WELL LOCATION AND ACREAGE DEDICATION PLAT

Form C-122
Supersedes C-128
Effective 1-1-65

All distances must be from the outer boundaries of the Section

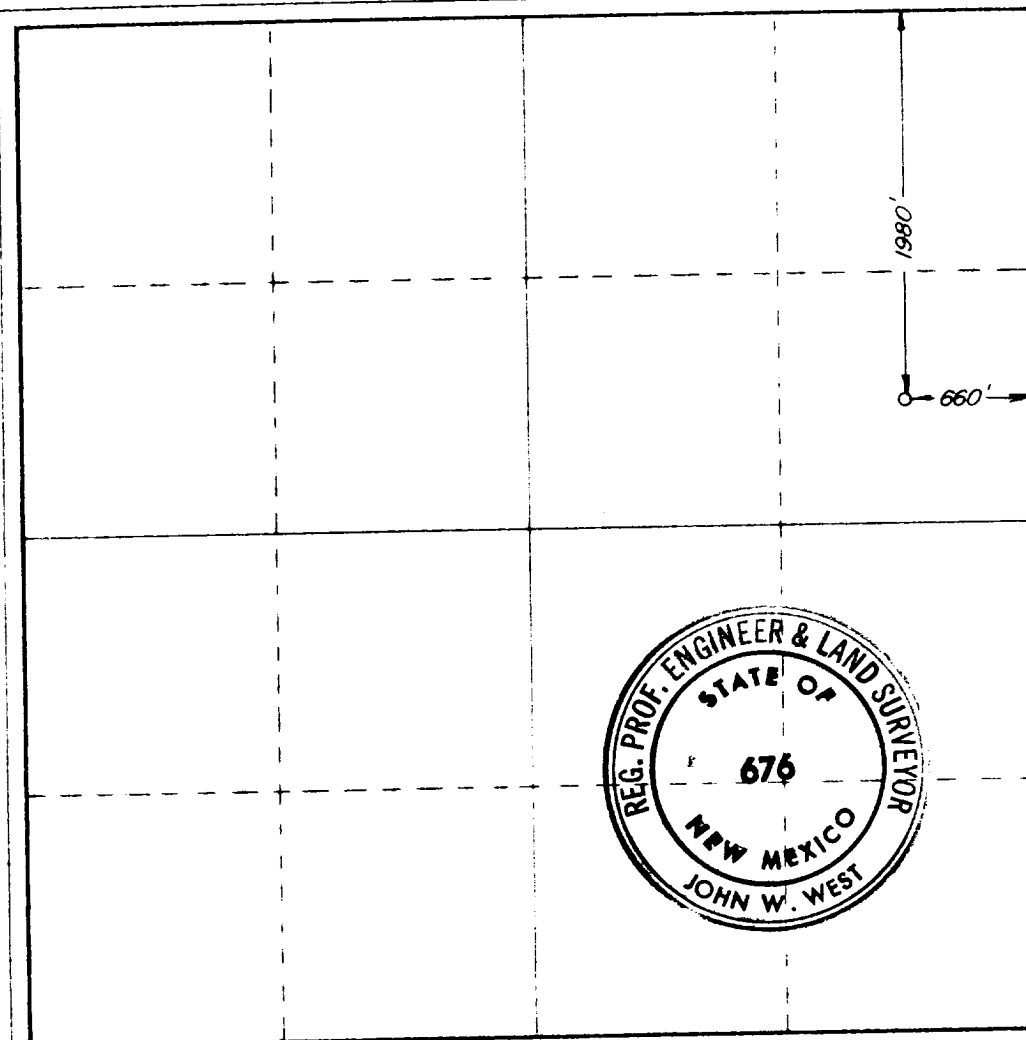
Operator Coronado Exploration, Inc.,		Lease Mabel		Well No. 2
Unit Letter H	Section 30	Township 10 South	Range 28 East	County Chaves
Actual Footage Location of Well: 1980 feet from the North line and 660 feet from the East line				
Ground Level Elev. 3734.3	Producing Formation San Andres	Pool Und. L.E. Ranch - San Andres		Dedicated Acreage 40 Acres

1. Outline the acreage dedicated to the subject well by colored pencil or hachure marks on the plat below.
2. If more than one lease is dedicated to the well, outline each and identify the ownership thereof (both as to working interest and royalty).
3. If more than one lease of different ownership is dedicated to the well, have the interests of all owners been consolidated by communitization, unitization, force-pooling, etc?

☐ Yes ☒ No If answer is "yes," type of consolidation _____

If answer is "no," list the owners and tract descriptions which have actually been consolidated. (Use reverse side of this form if necessary.) All leases are held by operator and participating parties

No allowable will be assigned to the well until all interests have been consolidated (by communitization, unitization, forced-pooling, or otherwise) or until a non-standard unit, eliminating such interests, has been approved by the Commission.



CERTIFICATION

I hereby certify that the information contained herein is true and complete to the best of my knowledge and belief

Pamela Bacon
Name

Pamela Bacon
Position

Production Secretary
Company

Coronado Exploration Corp
Date

June 26, 1980

I hereby certify that the well location shown on this plat was plotted from field notes of actual surveys made by me or under my supervision, and that the same is true and correct to the best of my knowledge and belief

Date Surveyed
June 17, 1980

Registered Professional Engineer
and Land Surveyor

John W. West
Certificate No.

JOHN W. WEST 676
PATRICK A. ROMERO 6863
Ronald J. Eidson 3239

330 660 990 1320 1650 1980 2310 2640 2970 3300 3630 3960 4290 4620 4950 5280 5610 5940 6270 6600