

NO. OF COPIES RECEIVED	
DISTRIBUTION	
SANTA FE	1
FILE	1 ✓
U.S.G.S.	2
LAND OFFICE	
OPERATOR	1

NEW MEXICO OIL CONSERVATION COMMISSION

30-005-60752

Form C-101
Revised 1-1-65

5A. Indicate Type of Lease STATE <input type="checkbox"/> FEE <input checked="" type="checkbox"/>
5. State Oil & Gas Lease No.
7. Unit Agreement Name
8. Farm or Lease Name Moonlight 33 West
9. Well No. #1
10. Field and Pool, or Wildcat Wildcat San Andres
12. County Chaves
19. Proposed Depth 3550'
19A. Formation San Andres
20. Rotary or C.T. Rotary
21. Elevations (Show whether DF, RT, etc.) 3978.4 GL
21A. Kind & Status Plug. Bond Statewide
21B. Drilling Contractor Collier Drlg. Corp.
22. Approx. Date Work will start August 1, 1980

APPLICATION FOR PERMIT TO DRILL, DEEPEN, OR PLUG BACK

1a. Type of Work
DRILL ☒ DEEPEN ☐ PLUG BACK ☐

b. Type of Well
OIL WELL ☒ GAS WELL ☐ OTHER ☐ SINGLE ZONE ☐ MULTIPLE ZONE ☐

2. Name of Operator
Selco, Inc. ✓

3. Address of Operator
P.O. Box 798, Artesia, NM 88210

4. Location of Well
UNIT LETTER J LOCATED 1980 FEET FROM THE South LINE

AND 1980 FEET FROM THE East LINE OF SEC. 33 TWP. 7S RGE. 28E NMPM

12. County
Chaves

21. Elevations (Show whether DF, RT, etc.)
3978.4 GL

21A. Kind & Status Plug. Bond
Statewide

21B. Drilling Contractor
Collier Drlg. Corp.

22. Approx. Date Work will start
August 1, 1980

23. PROPOSED CASING AND CEMENT PROGRAM

SIZE OF HOLE	SIZE OF CASING	WEIGHT PER FOOT	SETTING DEPTH	SACKS OF CEMENT	EST. TOP
10 3/4"	8 5/8"	24#	115'	150 Sxs.	Surface
7 7/8"	4 1/2"	10 1/2#	3550'	250 Sxs.	Top of cement 100'

Plan to test the San Andres formation. 8 5/8" casing will be run to approximately 115' and set with 150 Sxs. of class C cement w/2% CaCl. Cement will be circulated to surface. Will drill out of the 8 5/8" casing with 7 7/8 bit to approximately 3550'. If sufficient shows are encountered, will then run 3550' of 4 1/2" casing and set with 250 Sxs of class C 2% CaCl cement and tie in to the 8 5/8" casing at approximately 115'. Will then log, perforate and complete well.

APPROVAL VALID FOR 90 DAYS UNLESS DRILLING COMMENCED, EXPIRES 10-21-80

RECEIVED JUL 16 1980 O. C. D. ARTESIA, OFFICE

APPROVED BY W.A. Grassie TITLE SUPERVISOR, DISTRICT II DATE JUL 21 1980

CONDITIONS OF APPROVAL, IF ANY:

IN ABOVE SPACE DESCRIBE PROPOSED PROGRAM: IF PROPOSAL IS TO DEEPEN OR PLUG BACK, GIVE DATA ON PRESENT PRODUCTIVE ZONE AND PROPOSED NEW PRODUCTIVE ZONE. GIVE BLOWOUT PREVENTER PROGRAM, IF ANY.

hereby certify that the information above is true and complete to the best of my knowledge and belief.

Signed Timothy D. Keller Title Agent Date 7/16/80

(This space for State Use)

NEW MEXICO OIL CONSERVATION COMMISSION
WELL LOCATION AND ACREAGE DEDICATION PLAT

Form C-102
Supersedes C-128
Effective 1-1-65

All distances must be from the outer boundaries of the Section.

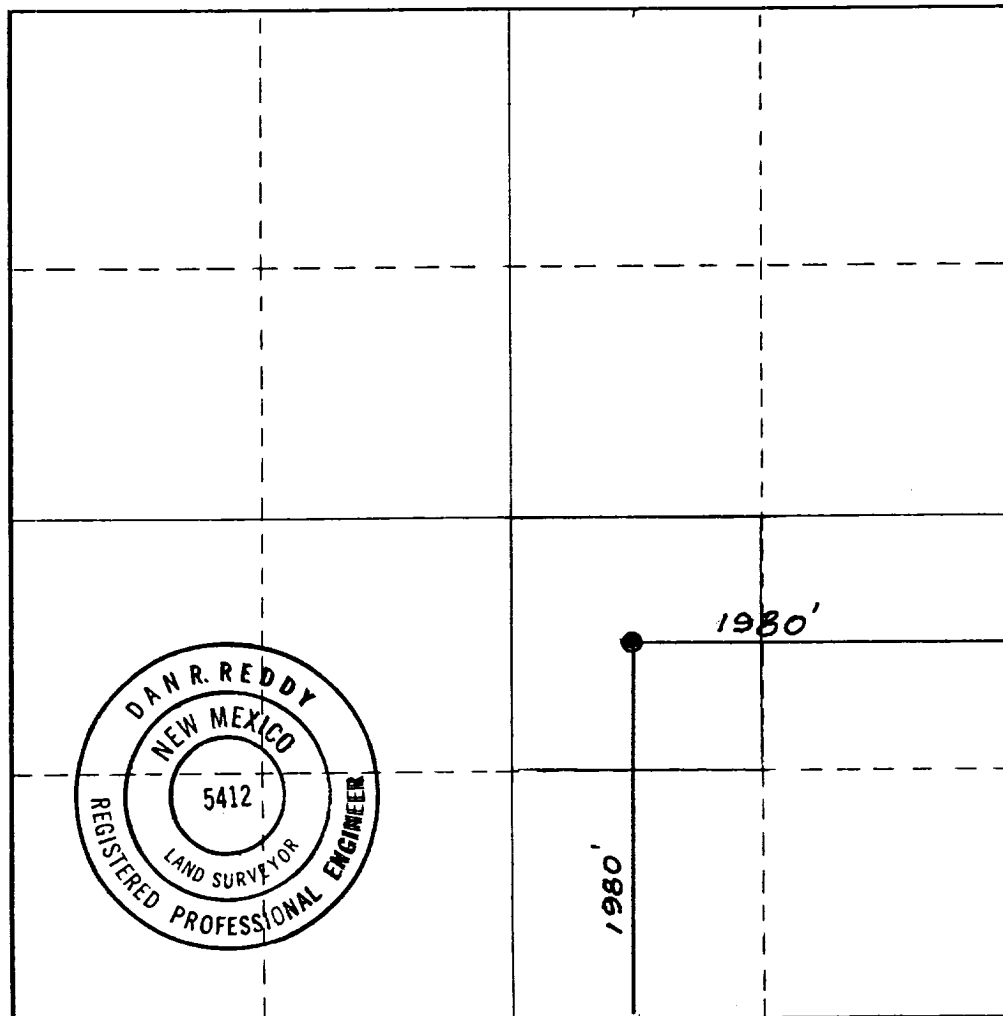
Operator Selco, Inc.		Lease Moonlight 33 West		Well No. #1
Unit: Letter J	Section 33	Township 7 South	Range 28 East	County Chaves
Actual Footage Location of Well: 1980 feet from the South line and 1980 feet from the East line				
Ground Level Elev. 3978.4	Producing Formation San Andres	Pool Wildcat San Andres	Dedicated Acreage: 40 Acres	

1. Outline the acreage dedicated to the subject well by colored pencil or hachure marks on the plat below.
2. If more than one lease is dedicated to the well, outline each and identify the ownership thereof (both as to working interest and royalty).
3. If more than one lease of different ownership is dedicated to the well, have the interests of all owners been consolidated by communitization, unitization, force-pooling, etc?

☐ Yes ☐ No If answer is "yes," type of consolidation _____

If answer is "no," list the owners and tract descriptions which have actually been consolidated. (Use reverse side of this form if necessary.) _____

No allowable will be assigned to the well until all interests have been consolidated (by communitization, unitization, forced-pooling, or otherwise) or until a non-standard unit, eliminating such interests, has been approved by the Commission.



CERTIFICATION

I hereby certify that the information contained herein is true and complete to the best of my knowledge and belief.

Timothy D. Collier
Name

Timothy D. Collier

Position

Agent

Company

Selco, Inc.

Date

7/16/80

I hereby certify that the well location shown on this plat was plotted from field notes of actual surveys made by me or under my supervision, and that the same is true and correct to the best of my knowledge and belief.

Date Surveyed

July 3, 1980

Registered Professional Engineer
and/or Land Surveyor

Dan R. Reddy
Certificate No.

NMPE&LS #5412