

NO. OF COPIES RECEIVED	
DISTRIBUTION	
SANTA FE	1
FILE	1 V
U.S.G.S.	2
LAND OFFICE	1
OPERATOR	1

NEW MEXICO OIL CONSERVATION COMMISSION
RECEIVED

30-005-60756
Form C-101
Revised 14-6

JUL 28 1980

O. C. O.

ARTESIA OFFICE

5A. Indicate Type of Lease STATE <input checked="" type="checkbox"/> FEDERAL <input type="checkbox"/>
5. State Oil & Gas Lease No. LG-3160
7. Unit Agreement Name
8. Farm or Lease Name GAO State
9. Well No. #1
10. Field and Pool, or Wildcat Undesignated
12. County Chaves
19. Proposed Depth 6800
19A. Formation Montoya
20. Rotary or C.T. Rotary
21. Elevations (Show whether DF, RI, etc.) 4090.7 G.L.
21A. Kind & Status Plug. Bond Blanket
21B. Drilling Contractor W. E. K.
22. Approx. Date Work will start August 5, 1980

APPLICATION FOR PERMIT TO DRILL, DEEPEN, OR PLUG BACK

1a. Type of Work DRILL <input checked="" type="checkbox"/> DEEPEN <input type="checkbox"/> PLUG BACK <input type="checkbox"/>
b. Type of Well OIL WELL <input checked="" type="checkbox"/> GAS WELL <input type="checkbox"/> OTHER <input type="checkbox"/>
2. Name of Operator General American Oil Company of Texas
3. Address of Operator P. O. Box 128 Loco Hills, New Mexico 88255
4. Location of Well UNIT LETTER H LOCATED 660 FEET FROM THE East LINE AND 2206 FEET FROM THE North LINE OF SEC. 36 TWP. 7-S RCL. 28-E NMPM
15. Proposed Depth 6800
19A. Formation Montoya
20. Rotary or C.T. Rotary
21. Elevations (Show whether DF, RI, etc.) 4090.7 G.L.
21A. Kind & Status Plug. Bond Blanket
21B. Drilling Contractor W. E. K.
22. Approx. Date Work will start August 5, 1980

PROPOSED CASING AND CEMENT PROGRAM

SIZE OF HOLE	SIZE OF CASING	WEIGHT PER FOOT	SETTING DEPTH	SACKS OF CEMENT	EST. TOP
17-1/2"	13-3/8"	54.5#	420'	300 sacks	Circulate
12-1/4"	9-5/8"	36#	2770'	900 sacks	Circulate
8-3/4"	5-1/2"	15.5#	6800'		

Set 13-3/8" casing at approximately 420' with class "C" cement and circulate to surface. After waiting 18 hours will drill out with 12-1/4" bit to depth of about 2770' and set 9-5/8" casing. Cement will be circulated to surface. After waiting 18 hours casing will be tested to 1500 PSI and held for 30 minutes. Drill out to approximately 6800' and set 5-1/2" casing and cement to cover all productive zones. If well is non-productive in the Montoya formation the San Andres will be tested. Gas is not dedicated.

APPROVED FOR 90 DAYS UNLESS DRILLING COMMENCED,

EXPIRES 10-30-80

IN ABOVE SPACE DESCRIBE PROPOSED PROGRAM: IF PROPOSAL IS TO DEEPEN OR PLUG BACK, GIVE DATA ON PRESENT PRODUCTIVE ZONE AND PROPOSED NEW PRODUCTIVE ZONE. GIVE BLOWOUT PREVENTER PROGRAM, IF ANY.

I hereby certify that the information above is true and complete to the best of my knowledge and belief.

Signed Randell M. Hawkins Title Field Superintendent Date July 28, 1980

(This space for State Use)

APPROVED BY M. Williams TITLE OIL AND GAS INSPECTOR DATE JUL 30 1980

CONDITIONS OF APPROVAL, IF ANY:

N. MEXICO OIL CONSERVATION COMMISS
WELL LOCATION AND ACREAGE DEDICATION PLAT

Form C-102
Supersedes C-128
Effective 1-1-65

All distances must be from the outer boundaries of the Section.

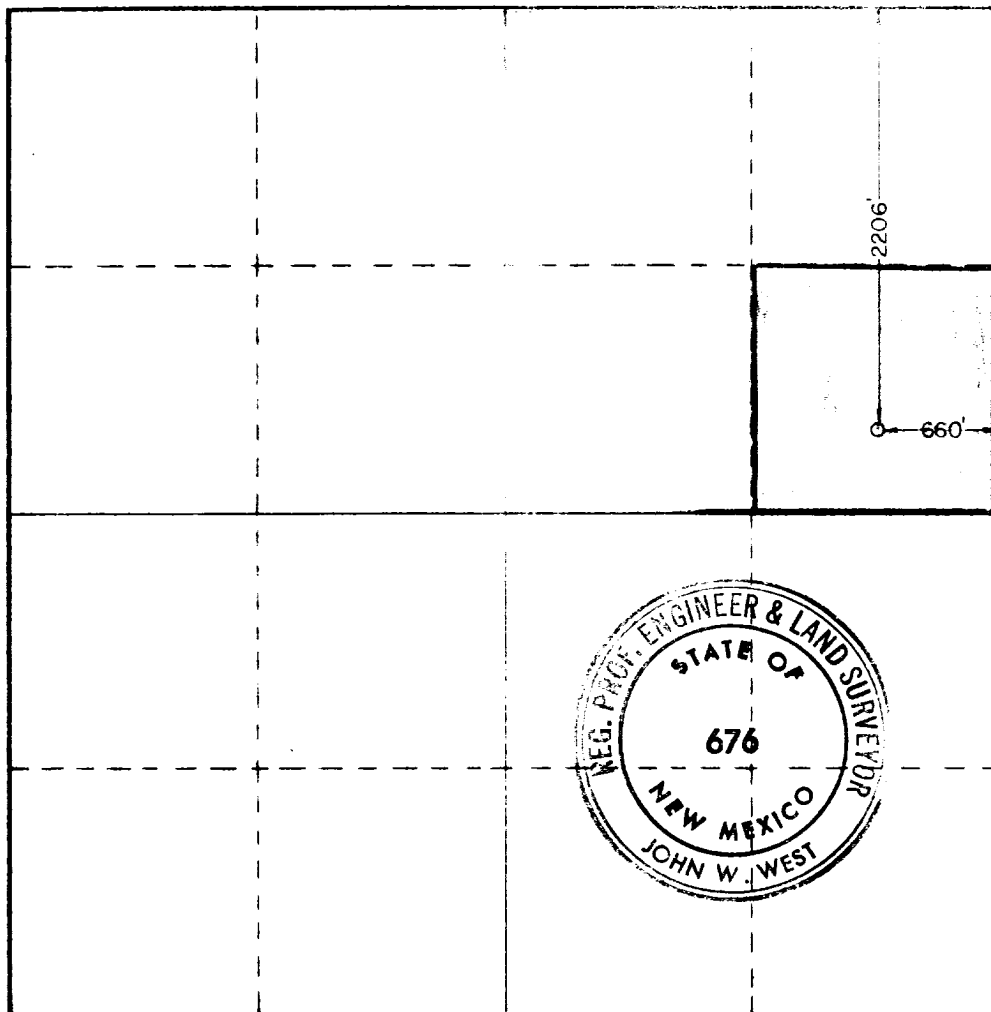
Operator General American Oil Co. of Texas			Lease GAO State		Well No. 1
Unit Letter H	Section 36	Township 7 South	Range 28 East	County Chaves	
Actual Well Location of Well:					
2206 feet from the North line and		660 feet from the East line			
Ground Level Elev. 4090.7	Producing Formation Montoya	Pool Undesignated	Dedicated Acreage: 40 Acres		

1. Outline the acreage dedicated to the subject well by colored pencil or hachure marks on the plat below.
2. If more than one lease is dedicated to the well, outline each and identify the ownership thereof (both as to working interest and royalty).
3. If more than one lease of different ownership is dedicated to the well, have the interests of all owners been consolidated by communitization, unitization, force-pooling, etc?

☐ Yes ☐ No If answer is "yes," type of consolidation _____

If answer is "no," list the owners and tract descriptions which have actually been consolidated. (Use reverse side of this form if necessary.) _____

No allowable will be assigned to the well until all interests have been consolidated (by communitization, unitization, forced-pooling, or otherwise) or until a non-standard unit, eliminating such interests, has been approved by the Commission.



CERTIFICATION

I hereby certify that the information contained herein is true and complete to the best of my knowledge and belief.

Lendell Hawkins

Name

Lendell Hawkins

Position

Field Superintendent

Company

General American Oil Co. of Texas

Date

July 28, 1980

I hereby certify that the well location shown on this plat was plotted from field notes of actual surveys made by me or under my supervision, and that the same is true and correct to the best of my knowledge and belief.

Date Surveyed

July 15, 1980

Registered Professional Engineer and/or Land Surveyor

John W. West

Certificate No **JOHN W. WEST 676**
PATRICK A. ROMERO 6683
Ronald J. Eidson 3239

0 330 660 990 1320 1650 1980 2310 2640 2970 3300 3630 3960 4290 4620 4950 5280 5610 5940 6270 6600 6930 7260 7590 7920 8250 8580 8910 9240 9570 9900

WEK DRILLING CO., INC. - Rig 1 & 3
BLOWOUT PREVENTER SPECIFICATION

