

**N. MEXICO OIL CONSERVATION COMMISSION
WELL LOCATION AND ACREAGE DEDICATION PLAT**

Form O-102
Supersedes O-128
Effective 10-65

All distances must be from the outer boundaries of the Section

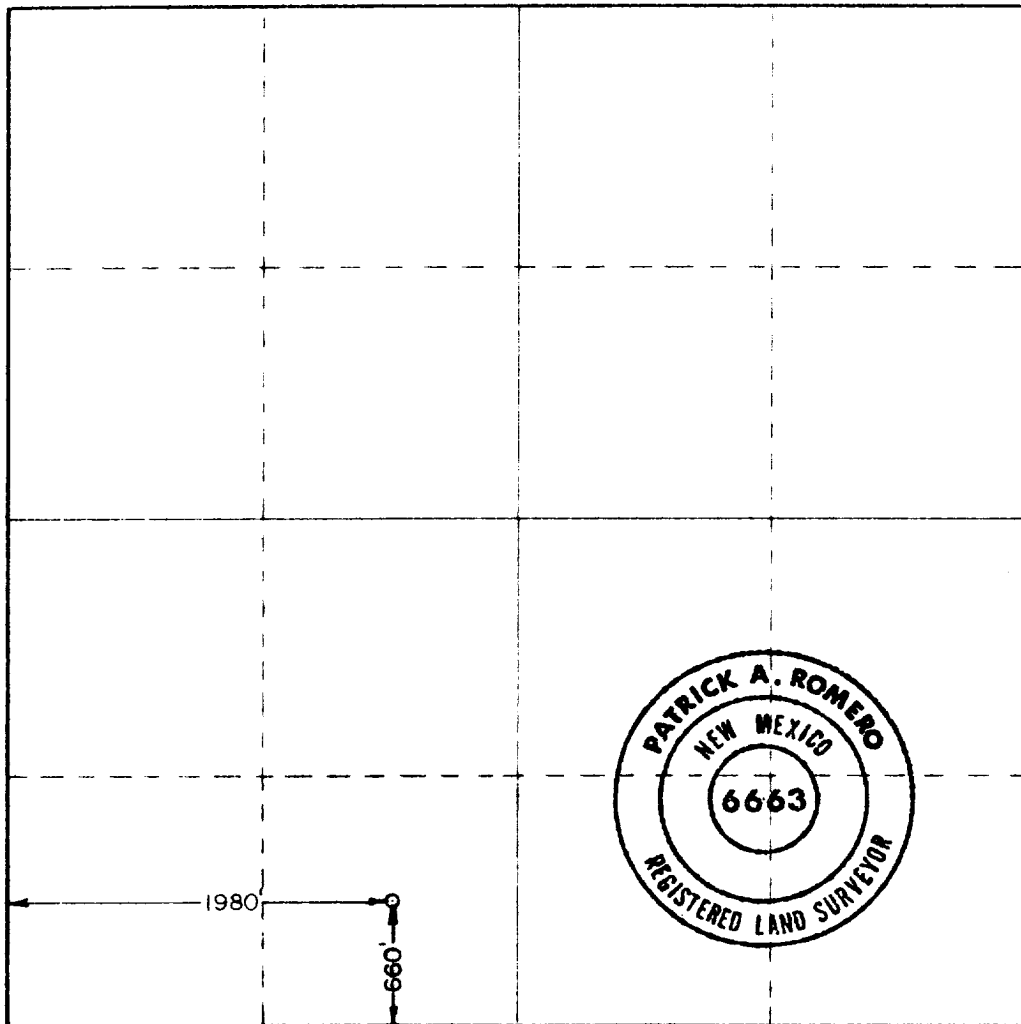
Operator Coronado Exploration Corp.			Lease Mona		Well No. 1
Section Letter N	Section 7	Township 10 South	Range 26 East	County Chaves	
Actual Surface Location of Well: 660 feet from the South line and 1980 feet from the West line					
Ground Level Elev. 3799.1	Producing Formation San Andres		Pool Und. Racetrack San Andres	Dedicated Acreage 40	

1. Outline the acreage dedicated to the subject well by colored pencil or hatchure marks on the plat below
2. If more than one lease is dedicated to the well, outline each and identify the ownership thereof (both as to working interest and royalty).
3. If more than one lease of different ownership is dedicated to the well, have the interests of all owners been consolidated by communitization, unitization, force-pooling, etc?

☐ Yes ☒ No If answer is "yes," type of consolidation _____

If answer is "no," list the owners and tract descriptions which have actually been consolidated (Use reverse side of this form if necessary.) **All leases are held by operator and participating parties**

No allowable will be assigned to the well until all interests have been consolidated (by communitization, unitization, forced-pooling, or otherwise) or until a non-standard unit, eliminating such interests, has been approved by the Commission.



CERTIFICATION

I hereby certify that the information contained herein is true and complete to the best of my knowledge and belief

[Signature]

Name
Phelps White

Position
Engineer

Company
Coronado Exploration Corp.

Date
07 18-80

I hereby certify that the well location shown on this plat was plotted from field notes of actual surveys made by me or under my supervision, and that the same is true and correct to the best of my knowledge and belief.

Date Surveyed
April 25, 1980

Registered Professional Engineer
and Land Surveyor

[Signature: Patrick A. Romero]

Certificate No **JOHN W. WEST 876**
PATRICK A. ROMERO 6863
Ronald J. Eidson 3239

