

UNITED STATES
DEPARTMENT OF THE INTERIOR
GEOLOGICAL SURVEY

30-005-60763

APPLICATION FOR PERMIT TO DRILL, DEEPEN, OR PLUG BACK

1a. TYPE OF WORK

DRILL ☒DEEPEN ☐PLUG BACK ☐

b. TYPE OF WELL

OIL
WELL ☐GAS
WELL ☒

OTHER

SINGLE
ZONE ☒MULTIPLE
ZONE ☐

2. NAME OF OPERATOR

McClellan Oil Corporation

3. ADDRESS OF OPERATOR

P. O. Drawer 730, Roswell, New Mexico 88201

4. LOCATION OF WELL (Report location clearly and in accordance with any State requirements.)*

At surface

At proposed prod. zone 1980 FSL & 660 FWL

14. DISTANCE IN MILES AND DIRECTION FROM NEAREST TOWN OR POST OFFICE*

17 miles NE of Roswell, New Mexico

15. DISTANCE FROM PROPOSED*

LOCATION TO NEAREST
PROPERTY OR LEASE LINE, FT.
(Also to nearest drilg. unit line, if any)

660'

18. DISTANCE FROM PROPOSED LOCATION*

TO NEAREST WELL, DRILLING, COMPLETED,
OR APPLIED FOR, ON THIS LEASE, FT.

N/A

16. NO. OF ACRES IN LEASE

2200 MOL

19. PROPOSED DEPTH

4800'

17. NO. OF ACRES ASSIGNED
TO THIS WELL

160

20. ROTARY OR CABLE TOOLS

Rotary-BAM Drilling Corporation

21. ELEVATIONS (Show whether DF, RT, GR, etc.)

3744.6 G. L.

22. APPROX. DATE WORK WILL START*

September 1, 1980

23.

PROPOSED CASING AND CEMENTING PROGRAM

SIZE OF HOLE	SIZE OF CASING	WEIGHT PER FOOT	SETTING DEPTH	QUANTITY OF CEMENT
10-3/4"	8-5/8"	28 lb.	900	350 sx circulated
7-7/8"	4-1/2"	10-1/2 lb.	4800	250 sx

Propose to drill to approximately 4800' to test the Abo formation. If production is indicated, will set casing and attempt completion.

RECEIVED

Estimated Geologic Tops: San Andres 850 Tubb 3440
Glorieta 1950 Abo 4165

AUG 8 1980

Mud Program: Drill with fresh water to top of the Abo. Mud-up at that point and drill to TD with 10 cc water loss and 50 vis. mud.

O. C. D.
DISTRICT OFFICE

GAS NOT DEDICATED

IN ABOVE SPACE DESCRIBE PROPOSED PROGRAM: If proposal is to deepen or plug back, give data on present productive zone and proposed new productive zone. If proposal is to drill or deepen directionally, give pertinent data on subsurface locations and measured and true vertical depths. Give blowout preventer program, if any.

24.

SIGNED

J. J. McClellan

TITLE Operator

DATE 7/22/80

(This space for Federal or State office use)

PERMIT NO.

APPROVAL DATE

APPROVED BY (Orig. Sgd.) PETER W. CHESTER

TITLE ACTING DISTRICT ENGINEER

DATE AUG 6 1980

CONDITIONS OF APPROVAL, IF ANY:

WELL LOCATION AND ACREAGE DEDICATION PLAT

Effective 1-1-65

All distances must be from the outer boundaries of the Section.

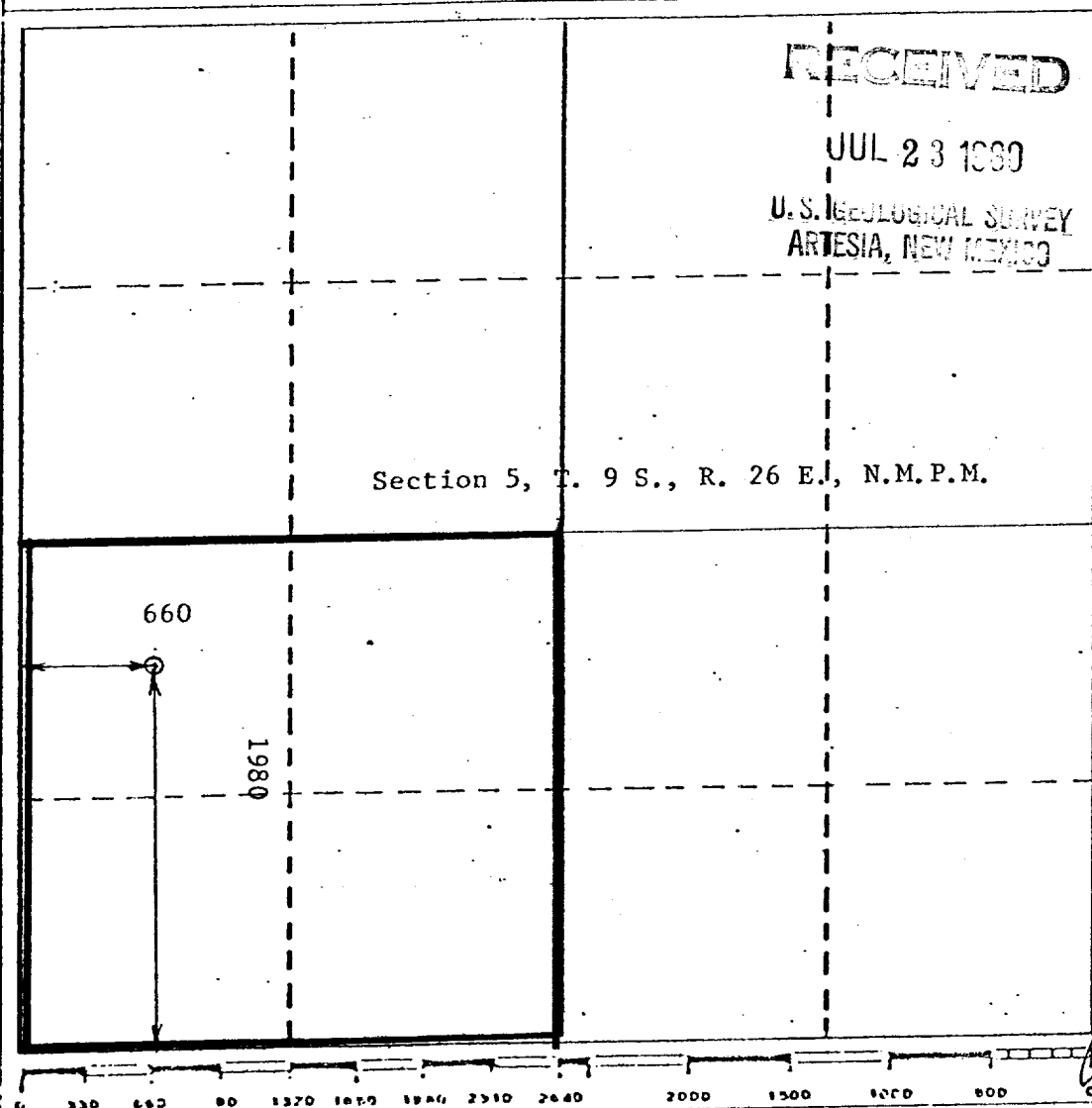
Operator McClelland Oil Company			Lease M-P Federal, NM 14294		Well No. 1
Unit Letter L	Section 5	Township 9 South	Range 26 East	County Chaves	
Actual Footage Location of Well:					
660 feet from the West line and		1980 feet from the South line			
Ground Level Elev. 3744.6	Producing Formation Abo	Pool Wildcat	Dedicated Acreage: 160 Acres		

1. Outline the acreage dedicated to the subject well by colored pencil or hatchure marks on the plat below.
2. If more than one lease is dedicated to the well, outline each and identify the ownership thereof (both as to working interest and royalty).
3. If more than one lease of different ownership is dedicated to the well, have the interests of all owners been consolidated by communitization, unitization, force-pooling, etc?

☐ Yes ☐ No If answer is "yes," type of consolidation _____

If answer is "no," list the owners and tract descriptions which have actually been consolidated. (Use reverse side of this form if necessary.) _____

No allowable will be assigned to the well until all interests have been consolidated (by communitization, unitization, forced-pooling, or otherwise) or until a non-standard unit, eliminating such interests, has been approved by the Commission.



CERTIFICATION

I hereby certify that the information contained herein is true and complete to the best of my knowledge and belief.

Name
Jack L. McClellan

Position
President

Company
McClellan Oil Corporation

Date
July 22, 1980

I hereby certify that the well location shown on this plat was plotted from field notes of actual surveys made by me or under my supervision, and that the same is true and correct to the best of my knowledge and belief.

July 22, 1980

Date Surveyed
John D. Jaquess, P.E. & L.S.

Registered Professional Engineer and Land Surveyor

Certificate No.
6290



United States Department of the Interior

GEOLOGICAL SURVEY

P. O. Drawer U
Artesia, New Mexico 88210

RECEIVED

AUG 8 1980

O. C. D.

July 29, 1980 ARTESIA, OFFICE

McClellan Oil Corporation
P. O. Drawer 730
Roswell, New Mexico 88201

Gentlemen:

McCLELLAN OIL CORPORATION
"MP" Fed No. 1
1980 FSL 660 FWL Sec. 5 T.9S R.26E
Chaves County Lease No. NM-14294

Above Data Required on Well Sign

Your APPLICATION FOR PERMIT TO DRILL the above-described well to a depth of 4,800 feet to test the Abo formation is hereby approved subject to compliance with the OIL AND GAS OPERATING REGULATIONS (30 CFR 221) and the following conditions:

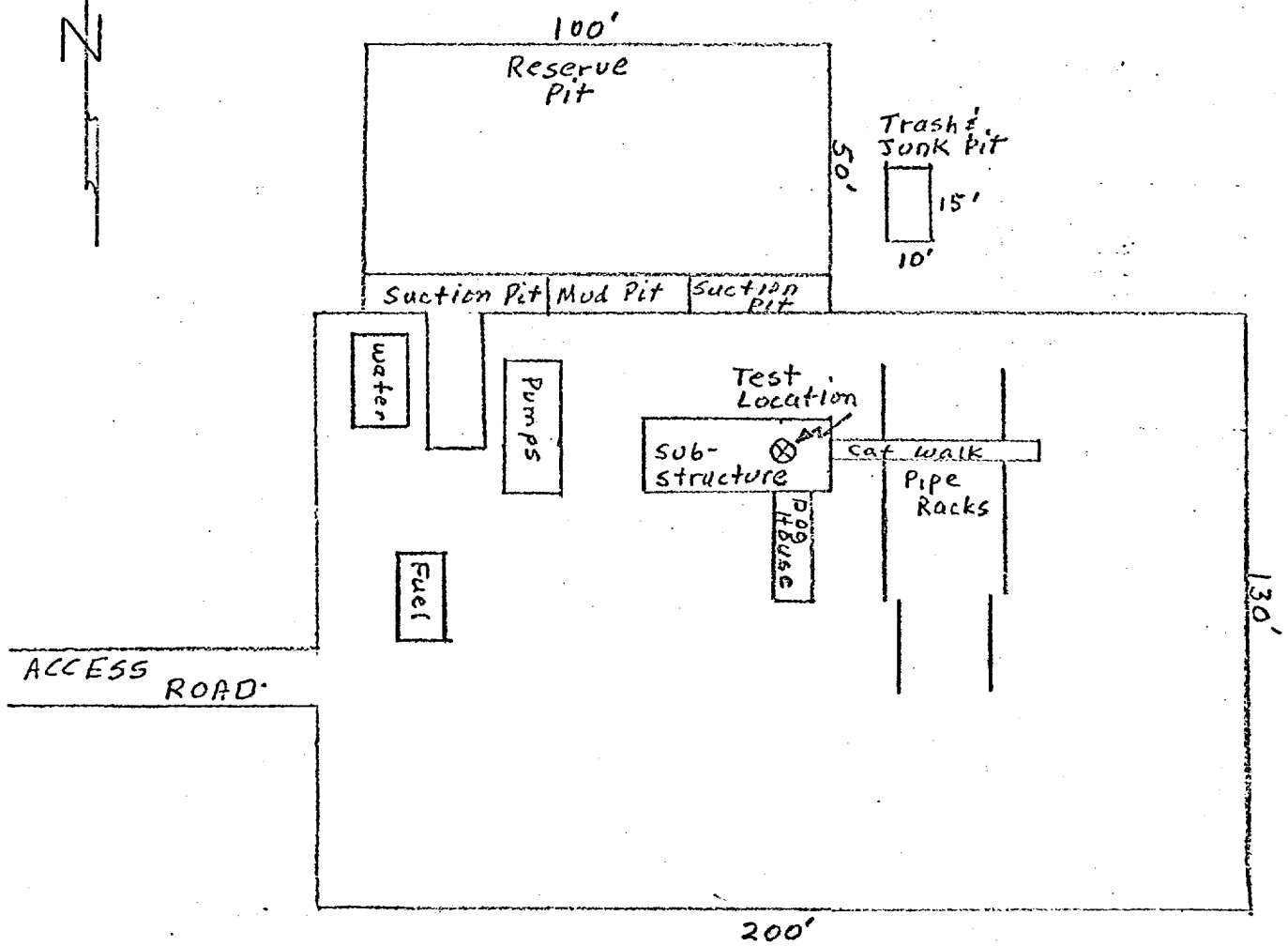
1. Drilling operations authorized are subject to compliance with the GENERAL REQUIREMENTS FOR OIL AND GAS OPERATIONS ON FEDERAL LEASES, dated July 1, 1978.
2. Prior to commencing construction of road, pad, or other associated developments, operator will provide the dirt contractor with a copy of the SURFACE USE PLAN and this approval including the GENERAL REQUIREMENTS.
3. All access roads will be limited to a 12 foot wide driving surface, excluding turnarounds. Surface disturbance associated with road construction will be limited to 20 feet in width.
4. Submit a Daily Report of Operations from spud date until the Well Completion Report (form 9-330) is filed. The progress report should be not less than 8" x 5" in size and each page should identify the well.
5. All permanent above-ground structures and equipment shall be painted in accordance with the attached Painting Requirements. The color used should simulate Sandstone Brown (Federal Standard No. 595A, color 20318 or 30318).
6. Notify the Survey by telephone 24 hours prior to spudding well.
7. Cement behind the 8-5/8" casing must be circulated.
8. Please have anyone contacting the Survey in regard to this well to identify the well with all of the information required above for the well sign.

Sincerely yours,

George H. Stewart
Acting District Engineer

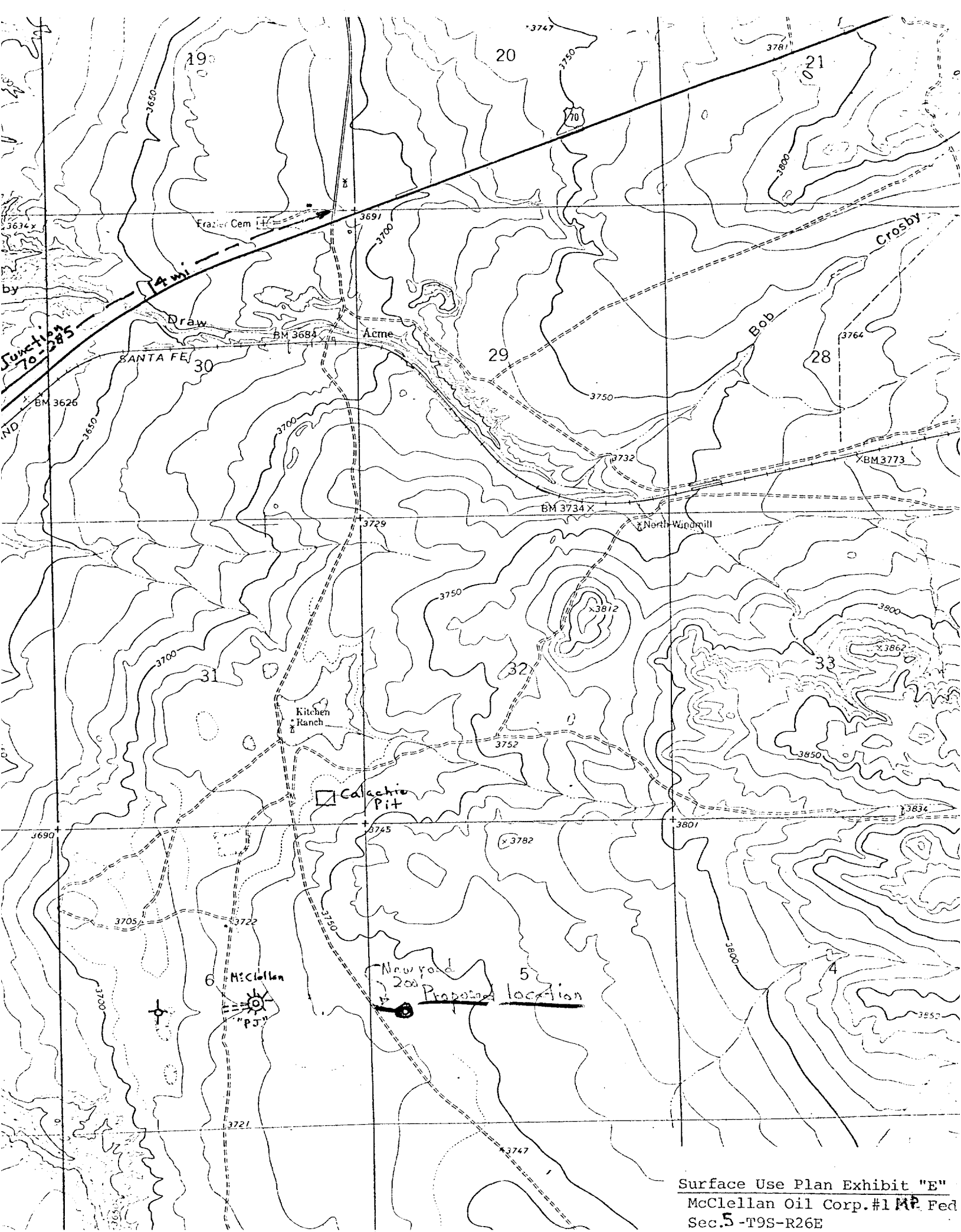
PHC

Surface Use Plan Exhibit "B"
McClellan Oil Corp. #1 MP Federal
Sec. 5-T9S-R26E
Chaves Co. New Mexico



RIG LAY OUT

Surface Use Plan Exhibit "D"
McClellan Oil Corp. #1 MP Fed.
Sec. 5-T9S-R26E
Chaves County, New Mexico



Surface Use Plan Exhibit "E"
McClellan Oil Corp. #1 MP Fed
Sec. 5 - T9S-R26E

BLOWOUT PREVENTER SPECIFICATION

