

NO. OF COPIES RECEIVED	5
DISTRIBUTION	
SANTA FE	1
FILE	1
U.S.G.S.	2
LAND OFFICE	
OPERATOR	1

NEW MEXICO OIL CONSERVATION COMMISSION

Form C-101
Revised 1-1-65

5A. Indicate Type of Lease

STATE ☐ FEE ☒

5. State Oil & Gas Lease No.

APPLICATION FOR PERMIT TO DRILL, DEEPEN, OR PLUG BACK

1a. Type of work DRILL <input checked="" type="checkbox"/> DEEPEN <input type="checkbox"/> PLUG BACK <input type="checkbox"/>		7. Unit Agreement Name
b. Type of Well OIL WELL <input checked="" type="checkbox"/> GAS WELL <input type="checkbox"/> OTHER <input type="checkbox"/> SINGLE ZONE <input type="checkbox"/> MULTIPLE ZONE <input type="checkbox"/>		8. Farm or Lease Name Rox
2. Name of Operator Coronado Exploration Corp. ✓		9. Well No. 1
3. Address of Operator 1005 Marquette NW, Albuquerque, New Mexico 87102		10. Field and Pool, or Acreage Wildcat
4. Location of Well UNIT LETTER C LOCATED 1980 FEET FROM THE west LINE AND 660 FEET FROM THE north LINE OF SEC. 31 TWP. 10S RGE. 28E NMPM		11. County Chaves
19. Proposed Depth 2350'		19A. Formation San Andres
20. Rotary or C.T. Cable Tool		
21. Elevations (Show whether DF, RT, etc.) 3711.8 Gr.	21A. Kind & Status Plug. Bond Statewide	21B. Drilling Contractor Cortez Drilling
22. Approx. Date Work will start August 19, 1980		

23. PROPOSED CASING AND CEMENT PROGRAM

SIZE OF HOLE	SIZE OF CASING	WEIGHT PER FOOT	SETTING DEPTH	SACKS OF CEMENT	EST. TOP
10"	8 5/8"	20#	360	200	surface
8"	4 1/2"	9.5#	2350	140	1850

We plan to drill a 10" hole to 360' and set 8 5/8" casing. We will circulate Dowell Class "C" cement and WOC 18 hrs. If the hole bails dry, we will commence to drill an 8" hole to 2350' and run SNP, Density and Dual Induction logs. Depending on the outcome of the logs we will either run 4 1/2" casing or plug the hole.

IN ABOVE SPACE DESCRIBE PROPOSED PROGRAM: IF PROPOSAL IS TO DEEPEN OR PLUG BACK, GIVE DATA ON PRESENT PRODUCTIVE ZONE AND PROPOSED NEW PRODUCTIVE ZONE. GIVE BLOWOUT PREVENTER PROGRAM, IF ANY.

I hereby certify that the information above is true and complete to the best of my knowledge and belief.

CORONADO EXPLORATION CORP.

Signed Gail Guinnis Title Production Secretary Date August 13, 1980

(This space for State Use)

APPROVED BY W.A. Gussert TITLE SUPERVISOR, DISTRICT II DATE AUG 25 1980

CONDITIONS OF APPROVAL, IF ANY:

NEW MEXICO OIL CONSERVATION COMMISSION
WELL LOCATION AND ACREAGE DEDICATION PLAT

Form C-102
Supersedes C-128
Effective 4-1-65

All distances must be from the outer boundaries of the Section

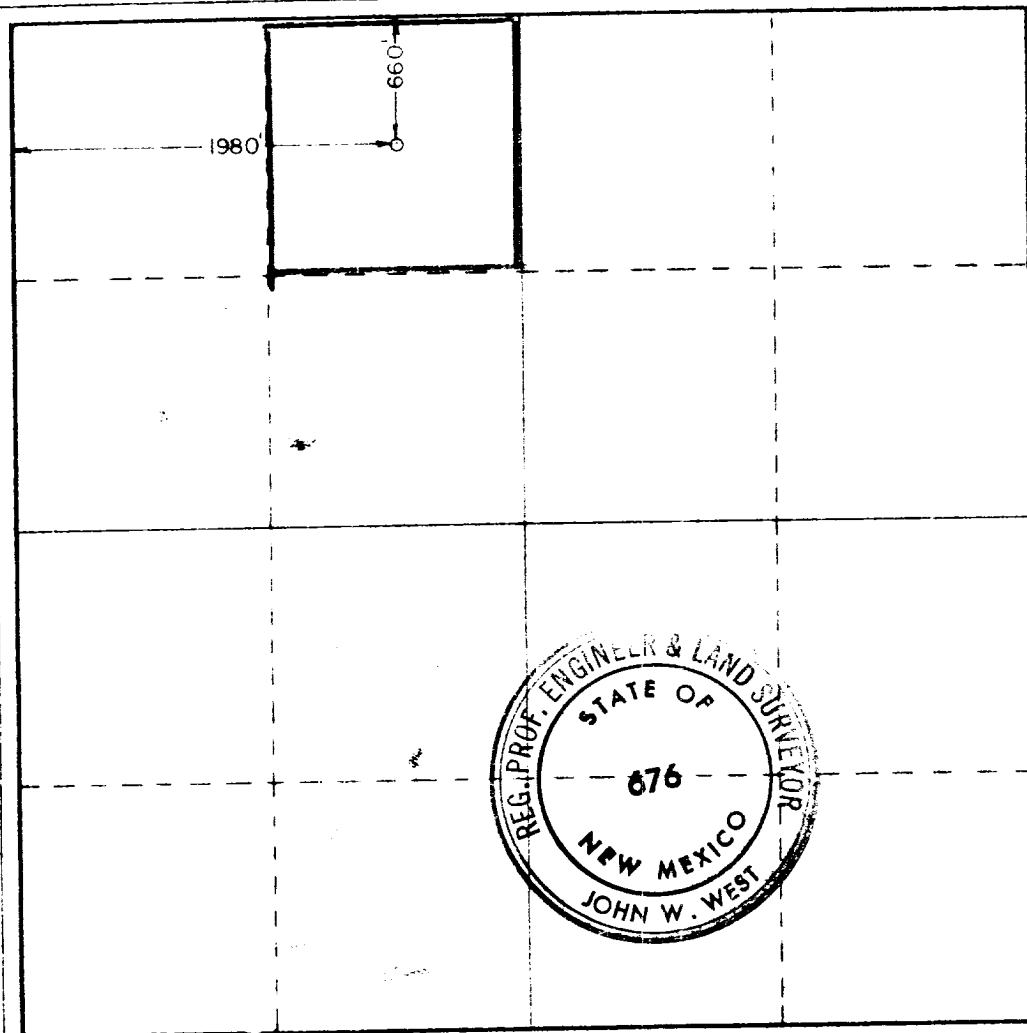
Operator Coronado Exploration Inc.,		Lease Rox		Well No. 1
Tract Letter C	Section 31	Township 10 South	Range 28 East	County Chavez
Actual Wellbore Location of Well: 1980 feet from the West line and 660 feet from the North line				
Ground Level Elev. 3711.8	Producing Formation San Andres	Pool Wildcat	Dedicated Acreage 40	

1. Outline the acreage dedicated to the subject well by colored pencil or hachure marks on the plat below.
2. If more than one lease is dedicated to the well, outline each and identify the ownership thereof (both as to working interest and royalty).
3. If more than one lease of different ownership is dedicated to the well, have the interests of all owners been consolidated by communitization, unitization, force-pooling, etc?

☐ Yes ☒ No If answer is "yes," type of consolidation O. C. D.

If answer is "no," list the owners and tract descriptions which have actually been consolidated. (Use reverse side of this form if necessary.) All leases are held by operator and participating parties

No allowable will be assigned to the well until all interests have been consolidated (by communitization, unitization, forced-pooling, or otherwise) or until a non-standard unit, eliminating such interests, has been approved by the Commission.



CERTIFICATION

I hereby certify that the information contained herein is true and complete to the best of my knowledge and belief

Name

Gail Gunnels

Position

Production Secretary

Company

Coronado Exploration Corp.

Date

August 15, 1980

I hereby certify that the well location shown on this plat was plotted from field notes of actual surveys made by me or under my supervision, and that the same is true and correct to the best of my knowledge and belief.

Date Surveyed

August 13, 1980

Registered Professional Engineer and/or Land Surveyor

Certificate No. **JOHN W. WEST 676**
PATRICK A. ROMERO 6668
Ronald J. Eldon 3239