

NEW MEXICO OIL CONSERVATION COMMISSION  
WELL LOCATION AND ACREAGE DEDICATION PLAT

Form O-107  
Supersedeas 6-1-76  
Effective 1-1-78

All distances must be from the outer boundaries of the Section.

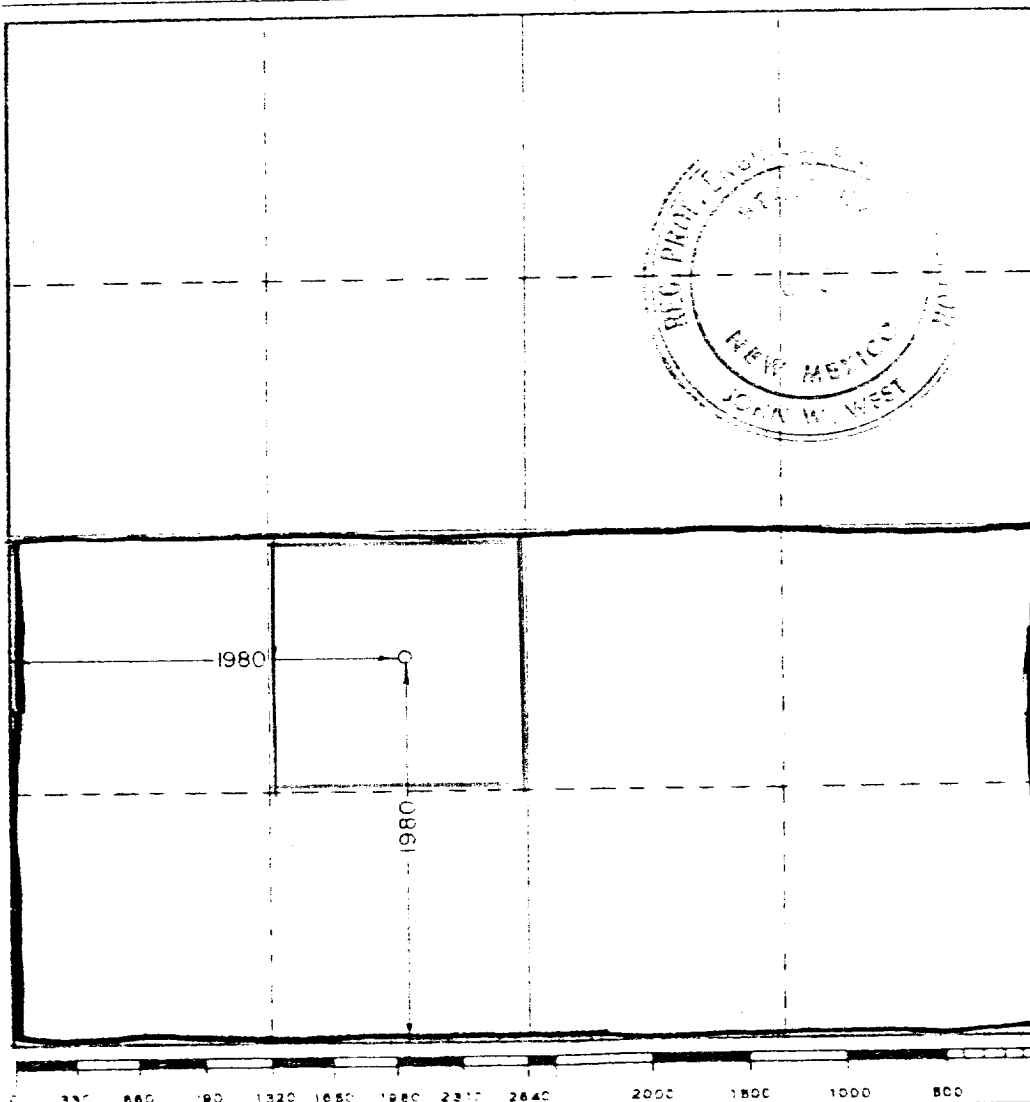
Lessor <b>Harper Oil Co.</b>		Lessee <b>Newlin</b>		Section <b>1</b>
Section <b>K</b>	Section <b>24</b>	Township <b>6 South</b>	Range <b>29 East</b>	County <b>Chaves</b>
Actual Footage Location of well: <b>1980</b> feet from the <b>South</b> line and <b>1980</b> feet from the <b>West</b> line.				
Actual Footage <b>4162.5</b>	Producing Formation		Estimated Acreage	

- Outline the acreage dedicated to the subject well by colored pencil or hatchure marks on the plat below.
- If more than one lease is dedicated to the well, outline each and identify the ownership thereof (both as to working interest and royalty).
- If more than one lease of different ownership is dedicated to the well, have the interests of all ~~leases~~ been consolidated by communitization, unitization, force-pooling, etc?

☐ Yes ☐ No If answer is "yes," type of consolidation AUG 28 1980

If answer is "no," list the owners and tract descriptions which have actually been consolidated On reverse side of this form if necessary. ARTESIA OFFICE

No allowable will be assigned to the well until all interests have been consolidated (by communitization, unitization, forced-pooling, or otherwise) or until a non-standard unit, eliminating such interests, has been approved by the Commission.



CERTIFICATION

I hereby certify that the information contained herein is true and complete to the best of my knowledge and belief.

*Ed Duncan*  
Name  
Drilling Manager  
Position  
Harper Oil Company  
Company

Date  
*August 26, 1980*

I hereby certify that the well location shown on this plat was plotted from field notes of actual surveys made by me or under my supervision, and that the same is true and correct to the best of my knowledge and belief.

Date surveyed  
*August 20, 1980*

Registered Professional Engineer and/or Land Surveyor

*John W. West*  
Certificate No. **JOHN W. WEST 676**  
**PATRICK A. ROMERO 6863**  
**Ronald J. Eidson 3239**