

NO. OF COPIES RECEIVED	6
DISTRIBUTION	
SANTA FE	1
FILE	1 ✓
U.S.G.S.	2
LAND OFFICE	1
OPERATOR	1

RECEIVED
NEW MEXICO OIL CONSERVATION COMMISSION

AUG 29 1980

O. C. D.
ARTESIA, OFFICE

30-005-60775

Form C-101
Revised 1-1-79

5A. Indicate Type of Lease	STATE <input checked="" type="checkbox"/> FEE <input type="checkbox"/>
5. State Oil & Gas Lease No.	LG-2463

APPLICATION FOR PERMIT TO DRILL, DEEPEN, OR PLUG BACK

1a. Type of Work b. Type of Well DRILL <input checked="" type="checkbox"/> DEEPEN <input type="checkbox"/> PLUG BACK <input type="checkbox"/> OIL WELL <input type="checkbox"/> GAS WELL <input checked="" type="checkbox"/> OTHER <input type="checkbox"/> SINGLE ZONE <input type="checkbox"/> MULTIPLE ZONE <input type="checkbox"/>		7. Unit Agreement Name
2. Name of Operator Yates Petroleum Corporation ✓		8. Firm or Lease Name Papalote "OI" State
3. Address of Operator 207 So. 4th Street, Artesia, NM 88210		9. Well No. 1
4. Location of Well UNIT LETTER <u>A</u> LOCATED <u>660</u> FEET FROM THE <u>North</u> LINE AND <u>660</u> FEET FROM THE <u>East</u> LINE OF SEC. <u>16</u> TWP. <u>7S</u> RGE. <u>25E</u> NMPM		10. Field and Pool, or Well Unit Wildcat 71
11. County Chaves		
12. Proposed Depth 4300	13A. Formation Abo	13. Rotary or C.T. Rotary
14. Elevations (Show whether DF, RL, etc.) 3882	21A. Kind & Status Plug. Bond Blanket	21B. Drilling Contractor LaRue
22. Approx. Date Work will start Sept. 2, 1980		

23.

PROPOSED CASING AND CEMENT PROGRAM

SIZE OF HOLE	SIZE OF CASING	WEIGHT PER FOOT	SETTING DEPTH	SACKS OF CEMENT	EST. TOP
17 1/2	13 3/8"	48# J-55	400	400 sx	circulate
12 1/2	8 5/8"	24# J-55	approx. 1400'	800 sx	circulate
8 3/4" or 7 7/8"	5 1/2 or 4 1/2	15.5 or 10.5#	TD 4300'	300 sx	

We propose to drill and test the Abo and intermediate formations. Approx. 400' of surface casing will be set and cement circulated to shut off gravel and caving. Casing will be set approx. 100' below the Roswell Water Basin (250' - 300'). Intermediate casing will be run and if commercial, 5 1/2 or 4 1/2 production casing will be run and cemented with adequate cover, perforated and stimulated as needed for production.

MUD PROGRAM: FW gel and LCM to 1400', Brine KCL to 3250' KCL Drispak and Starch to TD. MW 10-10.2, Vis 34-39, WL 14-7.

BOP PROGRAM: BOP's will be installed on 8 5/8" casing and tested daily.

GAS NOT DEDICATED.

APPROVAL VALID
FOR 90 DAYS UNLESS
DRILLING COMMENCED,

EXPIRES 12-2-80

IN ABOVE SPACE DESCRIBE PROPOSED PROGRAM; IF PROPOSAL IS TO DEEPEN OR PLUG BACK, GIVE DATA ON PRESENT PRODUCTIVE ZONE AND PROPOSED NEW PRODUCTIVE ZONE. GIVE BLOWOUT PREVENTER PROGRAM, IF ANY.

I hereby certify that the information above is true and complete to the best of my knowledge and belief.

Signed Gloria Rodriguez Title Geographer Date August 28, 1980

(This space for State Use)

APPROVED BY W.A. Gussert TITLE SUPERVISOR, DISTRICT II DATE SEP 2 - 1980

CONDITIONS OF APPROVAL, IF ANY:

Cement must be circulated to
surface behind 13 3/8" 48# casing

Notify N.M.O.C.C. in sufficient
time to witness cementing
the 8 5/8" casing

NEW MEXICO OIL CONSERVATION COMMISSION
WELL LOCATION AND ACREAGE DEDICATION PLAT

Form C-102
Supersedes C-128
Effective 1-1-65

All distances must be from the outer boundaries of the Section.

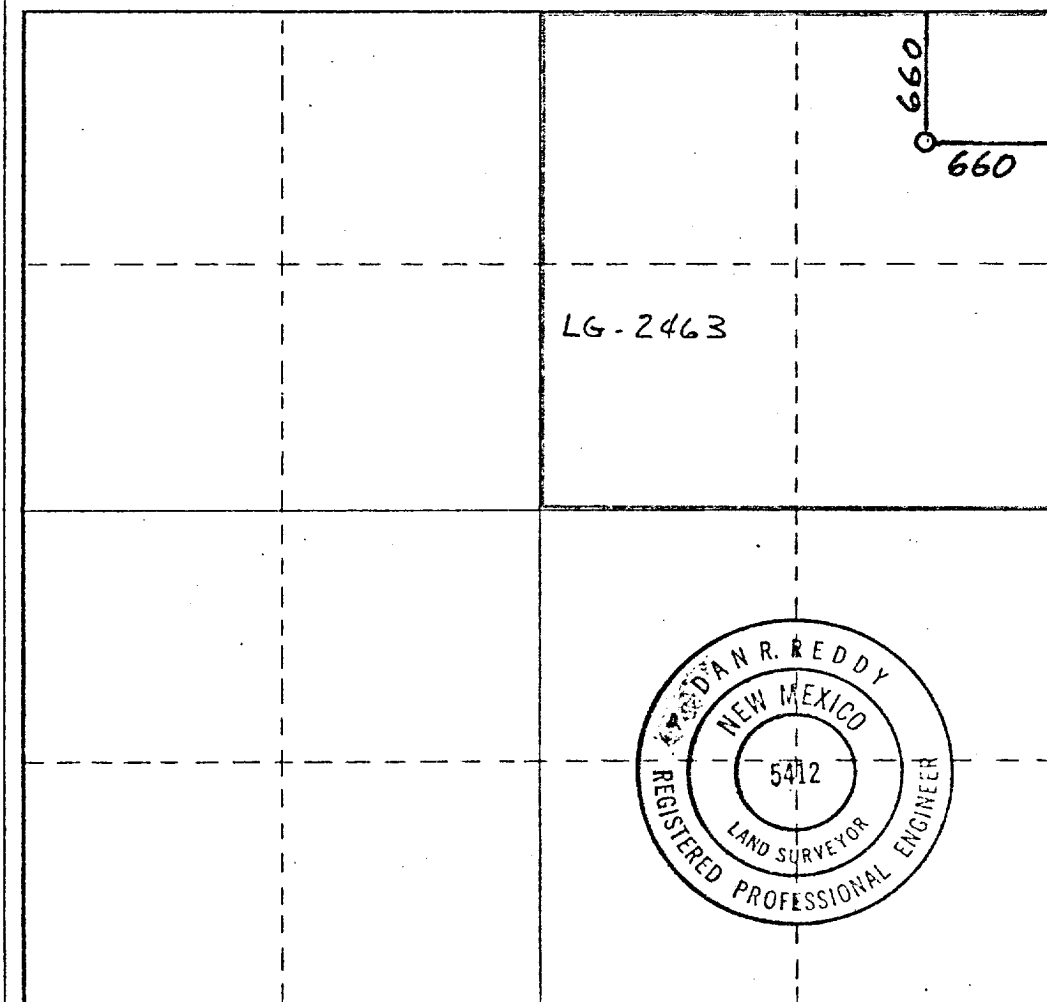
Operator YATES PETROLEUM CORPORATION			Lease Papalote Oil State		Well No. 1
Unit Letter A	Section 16	Township 7 South	Range 25 East	County Chaves	
Actual Footage Location of Well: 660 feet from the North line and 660 feet from the East line					
Ground Level Elev. 3882	Producing Formation ABO		Pool UNDESIGNATED ABO		Dedicated Acreage: 160 Acres

1. Outline the acreage dedicated to the subject well by colored pencil or hachure marks on the plat below.
2. If more than one lease is dedicated to the well, outline each and identify the ownership thereof (both as to working interest and royalty).
3. If more than one lease of different ownership is dedicated to the well, have the interests of all owners been consolidated by communitization, unitization, force-pooling, etc?

☐ Yes ☐ No If answer is "yes," type of consolidation _____

If answer is "no," list the owners and tract descriptions which have actually been consolidated. (Use reverse side of this form if necessary.) _____

No allowable will be assigned to the well until all interests have been consolidated (by communitization, unitization, forced-pooling, or otherwise) or until a non-standard unit, eliminating such interests, has been approved by the Commission.



CERTIFICATION

I hereby certify that the information contained herein is true and complete to the best of my knowledge and belief.

Gliserio Rodriguez
Name

GLISERIO RODRIGUEZ
Position

GEOGRAPHER
Company

YATES PETROLEUM CORP
Date

AUG 29, '80

I hereby certify that the well location shown on this plat was plotted from field notes of actual surveys made by me or under my supervision, and that the same is true and correct to the best of my knowledge and belief.

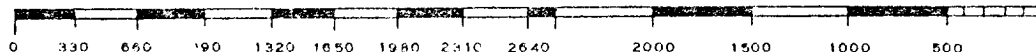
Date Surveyed

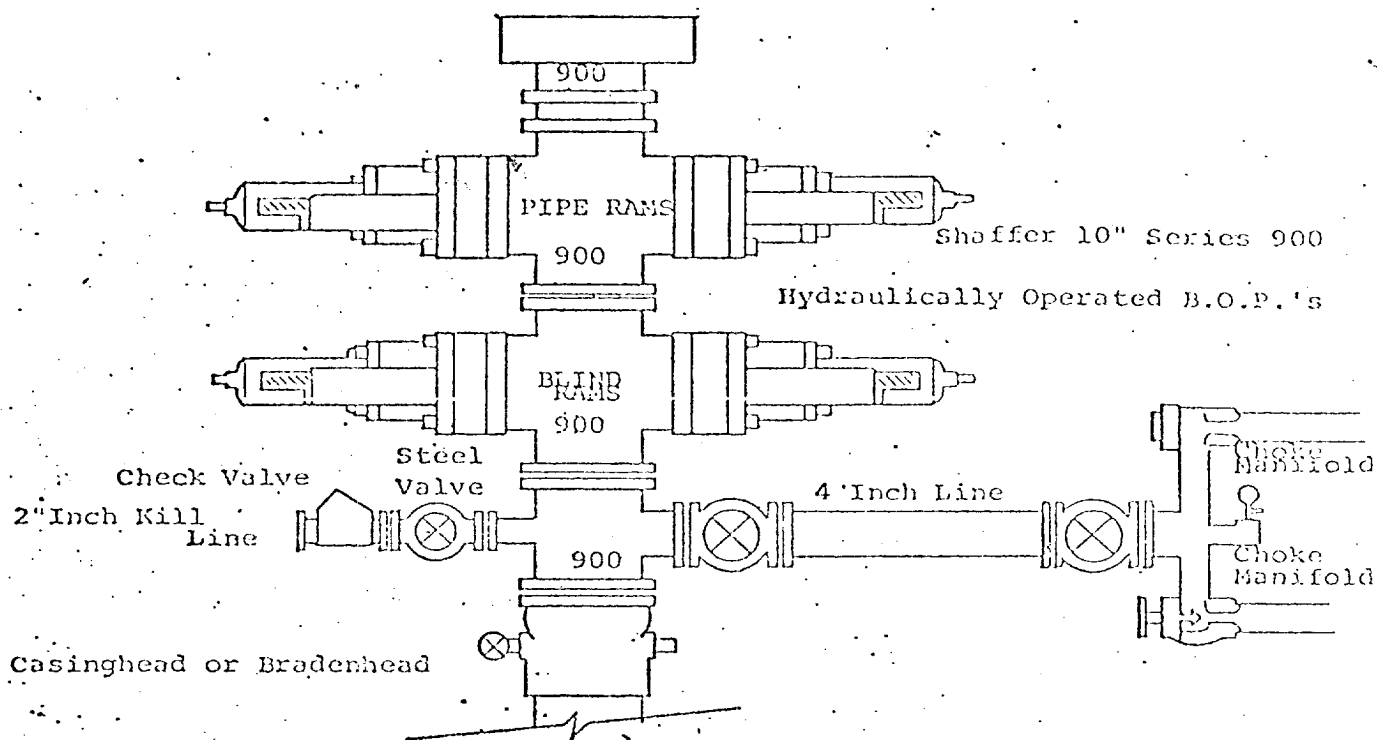
Aug. 29, 1980

Registered Professional Engineer
and/or Land Surveyor

Dan R. Reddy
Certificate No.

NMPE&LS #5412





THE FOLLOWING CONSTITUTE MINIMUM BLOWOUT PREVENTER REQUIREMENTS

1. All preventers to be hydraulically operated with secondary manual controls installed prior to drilling out from under casing.
2. Choke outlet to be a minimum of 4" diameter.
3. Kill line to be of all steel construction of 2" minimum diameter.
4. All connections from operating manifolds to preventers to be all steel, hole or tube a minimum of one inch in diameter.
5. The available closing pressure shall be at least 15% in excess of that required with sufficient volume to operate the B.O.P.'s.
6. All connections to and from preventer to have a pressure rating equivalent to that of the B.O.P.'s.
7. Inside blowout preventer to be available on rig floor.
8. Operating controls located a safe distance from the rig floor.
9. Hole must be kept filled on trips below intermediate casing. Operator not responsible for blowouts resulting from not keeping hole full.
10. D. P. float must be installed and used below zone of first gas intrusion.