

**N MEXICO OIL CONSERVATION COMMISSION
WELL LOCATION AND ACREAGE DEDICATION PLAT**

Form C-102
Supersedes C-128
Effective 1-1-65

All distances must be from the outer boundaries of the Section.

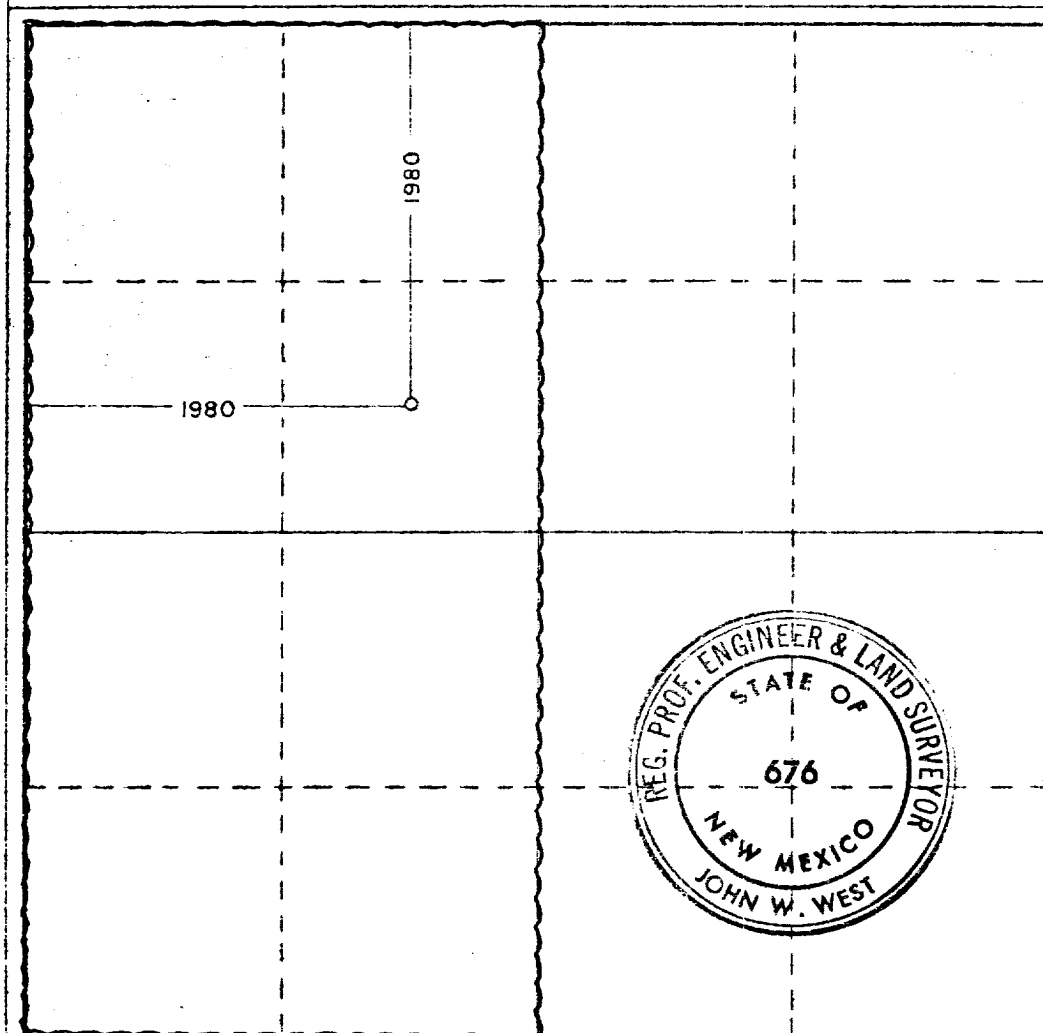
Operator Amoco Prod. Co.			Lease State JA		Well No. 1
Unit Letter F	Section 36	Township 8 South	Range 29 East	County Chaves	
Actual Footage Location of Well:					
1980 feet from the north line and		1980 feet from the west line			
Ground Level Elev. 4070.4	Producing Formation Strawn	Pool Wildcat Strawn	Dedicated Acreage: W/2 320 Acres		

1. Outline the acreage dedicated to the subject well by colored pencil or hachure marks on the plat below.
2. If more than one lease is dedicated to the well, outline each and identify the ownership thereof (both as to working interest and royalty).
3. If more than one lease of different ownership is dedicated to the well, have the interests of all owners been consolidated by communitization, unitization, force-pooling, etc?

☐ Yes ☐ No If answer is "yes," type of consolidation _____

If answer is "no," list the owners and tract descriptions which have actually been consolidated. (Use reverse side of this form if necessary.) _____

No allowable will be assigned to the well until all interests have been consolidated (by communitization, unitization, forced-pooling, or otherwise) or until a non-standard unit, eliminating such interests, has been approved by the Commission.



CERTIFICATION

I hereby certify that the information contained herein is true and complete to the best of my knowledge and belief.

Name *Greg Mitchell*
Position

Admin. Analyst

Company

Amoco Production Company

Date

8-20-81

I hereby certify that the well location shown on this plat was plotted from field notes of actual surveys made by me or under my supervision, and that the same is true and correct to the best of my knowledge and belief.

Date Surveyed

9-30-80

Registered Professional Engineer and/or Land Surveyor

John W. West

Certificate No. **JOHN W. WEST 676**
PATRICK A. ROMERO 6868
Ronald J. Edison 3239

0 350 660 970 1280 1590 1900 2210 2420 2000 1800 1600 1400 1200 1000 800 0