

NO. OF COPIES RECEIVED	
DISTRIBUTION	
SANTA FE	
FILE	
U.S.G.S.	
LAND OFFICE	
OPERATOR	

RECEIVED  
NEW MEXICO OIL CONSERVATION COMMISSION

JAN 13 1982

AMENDED

O. C. D.  
ARTESIA, OFFICE

Form C-101  
Revised 1-1-65

5A. Indicate Type of Lease STATE <input type="checkbox"/> FEE <input checked="" type="checkbox"/>
5. State Oil & Gas Lease No.
7. Unit Agreement Name
8. Farm or Lease Name SKIP
9. Well No. #1
10. Field and Pool, or Wildcat WILDCAT
12. County Chaves
19. Proposed Depth 7000'
19A. Formation Fusselman
20. Rotary or C.T. Rotary
21. Elevations (Show whether DF, RT, etc.) 4079' GL
21A. Kind & Status Plug. Bond Blanket
21B. Drilling Contractor WEK Drilling Co.
22. Approx. Date Work will start February 1, 1982

APPLICATION FOR PERMIT TO DRILL, DEEPEN, OR PLUG BACK

1a. Type of Work b. Type of Well DRILL <input checked="" type="checkbox"/> DEEPEN <input type="checkbox"/> PLUG BACK <input type="checkbox"/> OIL WELL <input checked="" type="checkbox"/> GAS WELL <input type="checkbox"/> OTHER <input type="checkbox"/> SINGLE ZONE <input type="checkbox"/> MULTIPLE ZONE <input type="checkbox"/>	2. Name of Operator RALPH NIX	3. Address of Operator P.O. Box 617, Artesia, New Mexico 88210
4. Location of Well UNIT LETTER P LOCATED 660 FEET FROM THE East LINE AND 660 FEET FROM THE South LINE OF SEC. 26 TWP. 7S RGE. 28E NMPM		
23. PROPOSED CASING AND CEMENT PROGRAM		

SIZE OF HOLE	SIZE OF CASING	WEIGHT PER FOOT	SETTING DEPTH	SACKS OF CEMENT	EST. TOP
17 1/2"	13 3/8"	48#	400'	450 sx.	Circulate
12 1/4"	8 5/8"	32#/24#	2770'	1100 sx.	400' or Circ.
8 3/4"	5 1/2"	15.5#	6800'	500 sx.	

GAS IS NOT DEDICATED - BOP PROGRAM (See Attached)

APPROVAL VALID FOR 180 DAYS  
PERMIT EXPIRES 7-15-82  
UNLESS DRILLING UNDERWAY

IN ABOVE SPACE DESCRIBE PROPOSED PROGRAM: IF PROPOSAL IS TO DEEPEN OR PLUG BACK, GIVE DATA ON PRESENT PRODUCTIVE ZONE AND PROPOSED NEW PRODUCTIVE ZONE. GIVE BLOWOUT PREVENTER PROGRAM, IF ANY.

I hereby certify that the information above is true and complete to the best of my knowledge and belief.

Signed Ralph Nix Title \_\_\_\_\_ Date January 12, 1982

(This space for State Use)

APPROVED BY Mike Williams TITLE OIL AND GAS INSPECTOR DATE JAN 14 1982

CONDITIONS OF APPROVAL, IF ANY:

NEW MEXICO OIL CONSERVATION COMMISSION  
WELL LOCATION AND ACREAGE DEDICATION PLAT

Form O-101  
Supersedes O-101-E  
Effective 1-1-81

All distances must be from the outer boundaries of the Section

Operator <b>Ralph Nix</b>			Lease <b>Skip</b>			Well No. <b>1</b>		
Unit Letter <b>P</b>	Section <b>26</b>	Township <b>7-S</b>	Range <b>28-E</b>	County <b>Chaves</b>				

Actual Footage Location of Well:

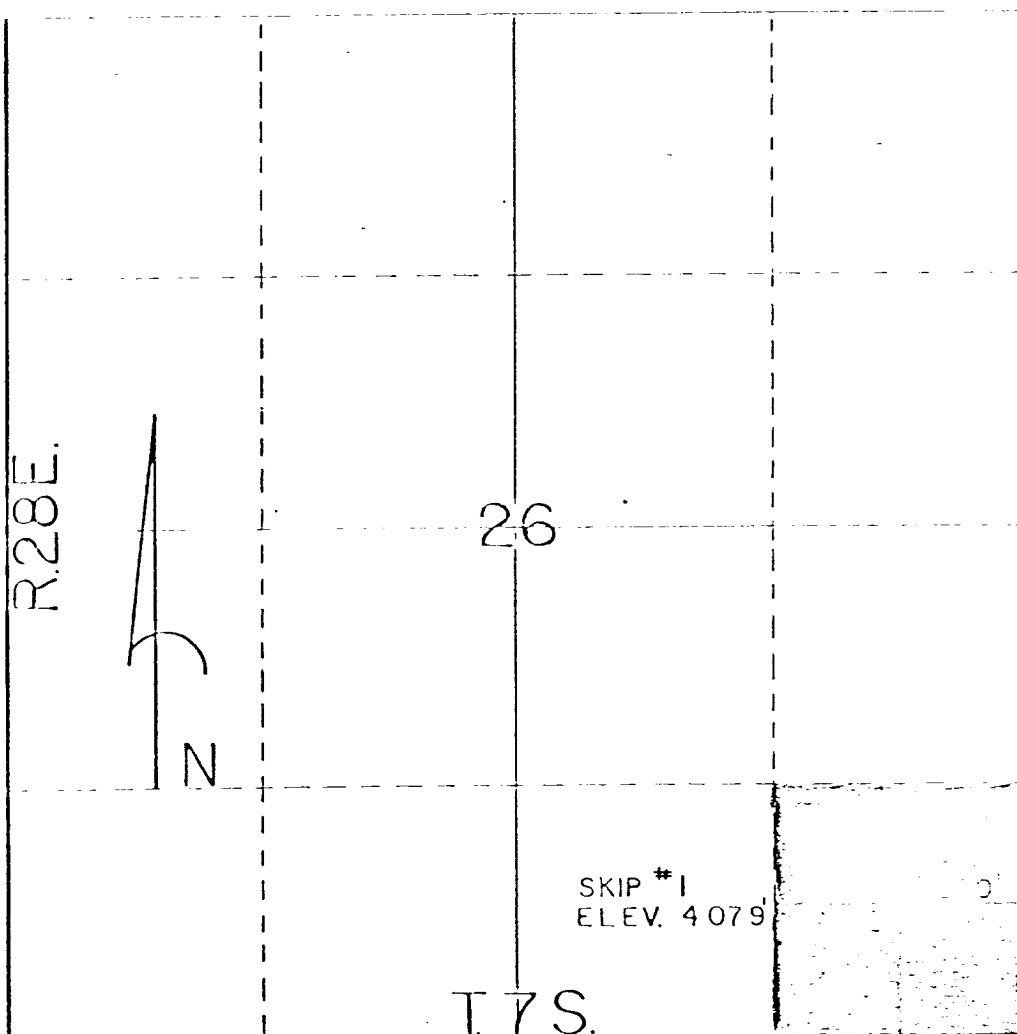
(60 feet from the east line and 660 feet from the south line)	Producing Formation <b>Fusselman</b>	Pool <b>Wildcat</b>	Dedicated Acreage <b>40</b>	Acres
Drilling Elev. <b>4079</b>				

1. Outline the acreage dedicated to the subject well by colored pencil or hatchure marks on the plat below.
2. If more than one lease is dedicated to the well, outline each and identify the ownership thereof (both as to working interest and royalty).
3. If more than one lease of different ownership is dedicated to the well, have the interests of all owners been consolidated by communitization, unitization, force-pooling, etc?

☐ Yes ☐ No If answer is "yes," type of consolidation \_\_\_\_\_

If answer is "no," list the owners and tract descriptions which have actually been consolidated. (Use reverse side of this form if necessary.) \_\_\_\_\_

No allowable will be assigned to the well until all interests have been consolidated (by communitization, unitization, forced-pooling, or otherwise) or until a non-standard unit, eliminating such interests, has been approved by the Commission.



CERTIFICATION

I hereby certify that the information contained herein is true and complete to the best of my knowledge and belief.

*William J. McCaw*  
Name  
**William J. McCaw**  
Position  
**Operations Manager**  
Company  
**Ralph Nix**  
Date  
**11/21/80**

I hereby certify that the well location shown on this plat was plotted from field notes of actual surveys made by me or under my supervision, and that the same is true and correct to the best of my knowledge and belief.

*Thomas T. Mann*  
Date Surveyed  
**10-14-80**  
Registered Professional Engineer and/or Land Surveyor

**Thomas T. Mann**  
Certificate No.  
**N.M. License No. 277**

WEK DRILLING CO., INC. - RIG 2  
EQUIPMENT DESCRIPTION

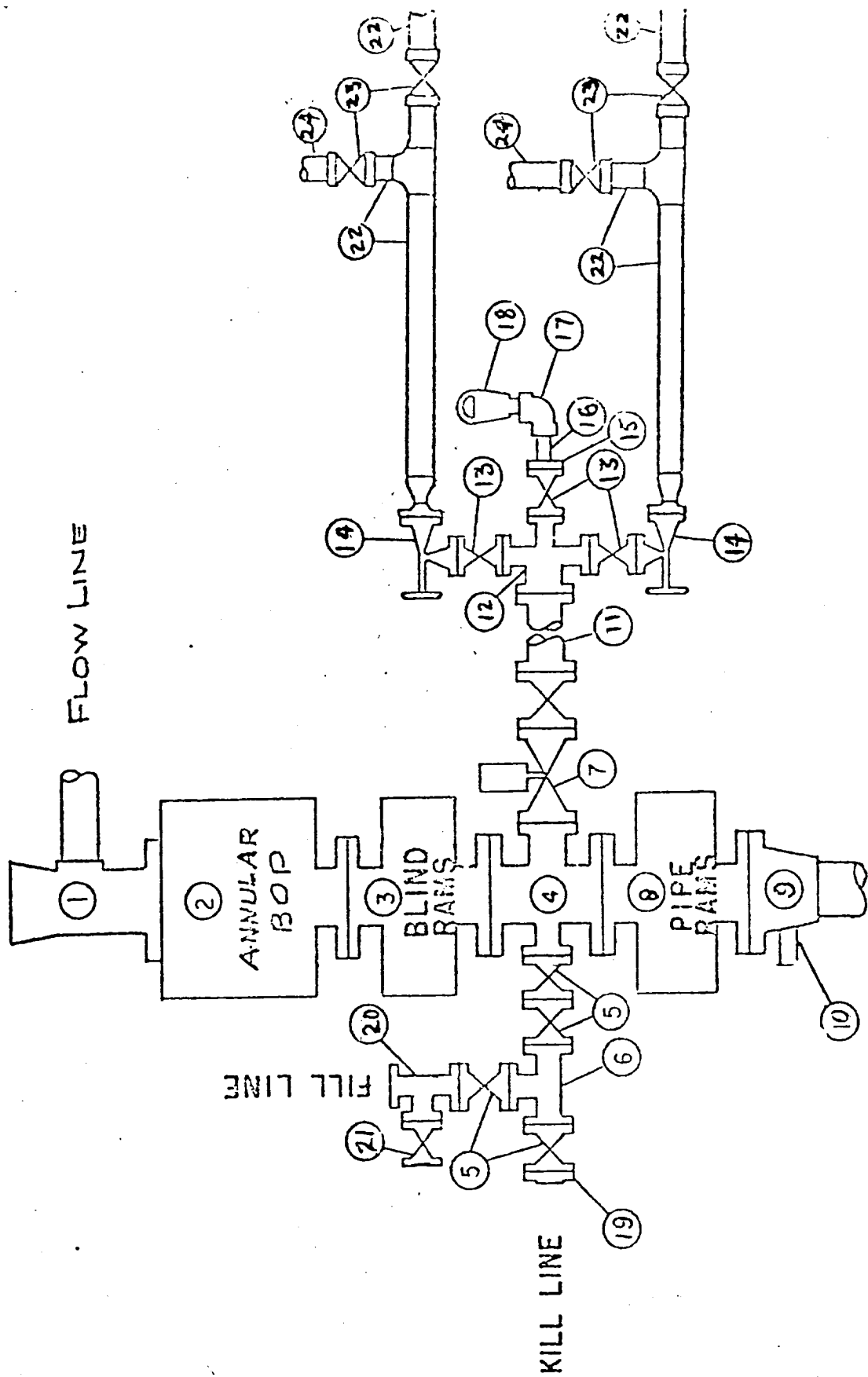
All equipment should be at least 3,000 psi WP or higher unless otherwise specified.

1. Bell nipple.
2. Hydril bag type preventer
3. Ram type pressure operated blowout preventer with blind rams.
4. Flanged spool with one 3-inch and one 2-inch (minimum) outlet.
5. 2-inch (minimum) flanged plug or gate valve.
6. 2-inch by 2-inch by 2-inch (minimum) flanged tee.
7. 3-inch gate valve.
8. Ram type pressure operated blowout preventer with pipe rams.
9. Flanged type casing head with one side outlet.
10. 2-inch threaded (or flanged) plug or gate valve.  
Flanged on 5000# WP, threaded on 3000# WP or less.
11. 3-inch flanged spacer spool.
12. 3-inch by 2-inch by 2-inch by 2-inch flanged cross.
13. 2-inch flanged plug or gate valve.
14. 2-inch flanged adjustable choke.
15. 2-inch threaded flange.
16. 2-inch XXH nipple.
17. 2-inch forged steel 90° Ell.
18. Cameron (or equal.) threaded pressure gage.
19. Threaded flange.
20. 2-inch flanged tee.
21. 2-inch flanged plug or gate valve.
22. 2½-inch pipe, 300' to pit, anchored.
23. 2½-inch SE valve.
24. 2½-inch line to steel pit or separator.

NOTES:

1. Items 3, 4 and 8 may be replaced with double ram type preventer with side outlets between the rams.
2. The two valves next to the stack on the fill and kill line to be closed unless drill string is being pulled.
3. Kill line is for emergency use only. This connection shall not be used for filling.
4. Replacement pipe rams and blind rams shall be on location at all times.
5. Only type U, LSW and QRC ram type preventers with secondary seals are acceptable for 5000 psi WP and higher BOP stacks.
6. Type E ram-type BOP's with factory modified side outlets may be used on 3000 psi or lower WP BOP stacks.

WEK DRILLING CO., INC. - Rig 2  
**BLOWOUT PREVENTER SPECIFICATION**



10/15/74