

NO. COPIES RECEIVED	5
DISTRIBUTION	
SANTA FE	1
FILE	1
U.S.G.S.	2
LAND OFFICE	
OPERATOR	1

NEW MEXICO OIL CONSERVATION COMMISSION

NOV 26 1980

C. C. D.

W. S. A. OFFICE

30-005-60825

Form C-101
Revised 1-1-65

5A. Indicate Type of Lease	STATE <input type="checkbox"/>	FILE <input checked="" type="checkbox"/>
5. State Oil & Gas Lease No.		

APPLICATION FOR PERMIT TO DRILL, DEEPEN, OR PLUG BACK

1a. Type of Work DRILL <input checked="" type="checkbox"/> DEEPEN <input type="checkbox"/> PLUG BACK <input type="checkbox"/>				1. That A proposed lease	
b. Type of Well OIL WELL <input checked="" type="checkbox"/> GAS WELL <input type="checkbox"/> OTHER <input type="checkbox"/> SINGLE ZONE <input type="checkbox"/> MULTIPLE ZONE <input type="checkbox"/>				2. That A proposed lease	
3. Name of Operator Coronado Exploration Corp.				3. Firm or Lease Name CX Plains	
4. Address of Operator 1005 Marquette NW Albuquerque, New Mexico 87102				9. Well No. 1	
5. Location of Well UNIT LETTER P LOCATED 660 FEET FROM THE South LINE AND 660 FEET FROM THE East LINE OF SEC. 19 T. 10S R. 28E				10. Field and Pool, or Other Racetrack SA	
				11. COUNTY Chaves	
		12. Proposed Depth 2300		13A. Formation San Andres	
		13B. Drilling Contractor Cortez Drilling		13C. CT	
14. Elevation (whether BH, RL, etc.) 3752.2 Gr.		21A. Kind & Status Prod. Bond Statewide		22. Approx. Date Work Will Start 11/28/80	

PROPOSED CASING AND CEMENT PROGRAM

SIZE OF HOLE	SIZE OF CASING	WEIGHT PER FOOT	SETTING DEPTH	SACKS OF CEMENT	EST. TOP
10"	8 5/8"	20#	325'	125	circulate
8"	4 1/2"	9.5#	2300'	140	1875'

We plan to drill a 10" hole to 325' and set 8 5/8" casing. We will circulate cement and WOC 18 hrs. If the casing is bailed dry and stays dry for one hour, we will continue to drill an 8" hole to 2375'. We will run SNP, Dual Induction and Density logs. Depending on the outcome of the logs, we will either set 4 1/2" casing or plug the hole.

Posted ID-1
API + NR Books
12-5-80

APPROVAL VALID
FOR 90 DAYS UNLESS
DRILLING COMMENCED

PIRES 3-1-81

IN ABOVE SPACE DESCRIBE PROPOSED PROGRAM: IF PROPOSAL IS TO DEEPEN OR PLUG BACK, GIVE DATA ON PRESENT PRODUCTIVE ZONE AND PROPOSED NEW PRODUCTIVE ZONE. GIVE BLOWOUT PREVENTER PROGRAM, IF ANY.

I hereby certify that the information above is true and complete to the best of my knowledge and belief.

Signed Gail J. Jurek Title Production Secretary Date November 20, 1980

(This space for State Use)

APPROVED BY W. A. Gressett TITLE SUPERVISOR, DISTRICT II DATE DEC 1 1980

CONDITIONS OF APPROVAL, IF ANY:

**N MEXICO OIL CONSERVATION COMMISSION
WELL LOCATION AND ACREAGE DEDICATION PLAT**

Form C-102
Supersedes C-120
Effective 1-1-85

All distances must be from the outer boundaries of the Section.

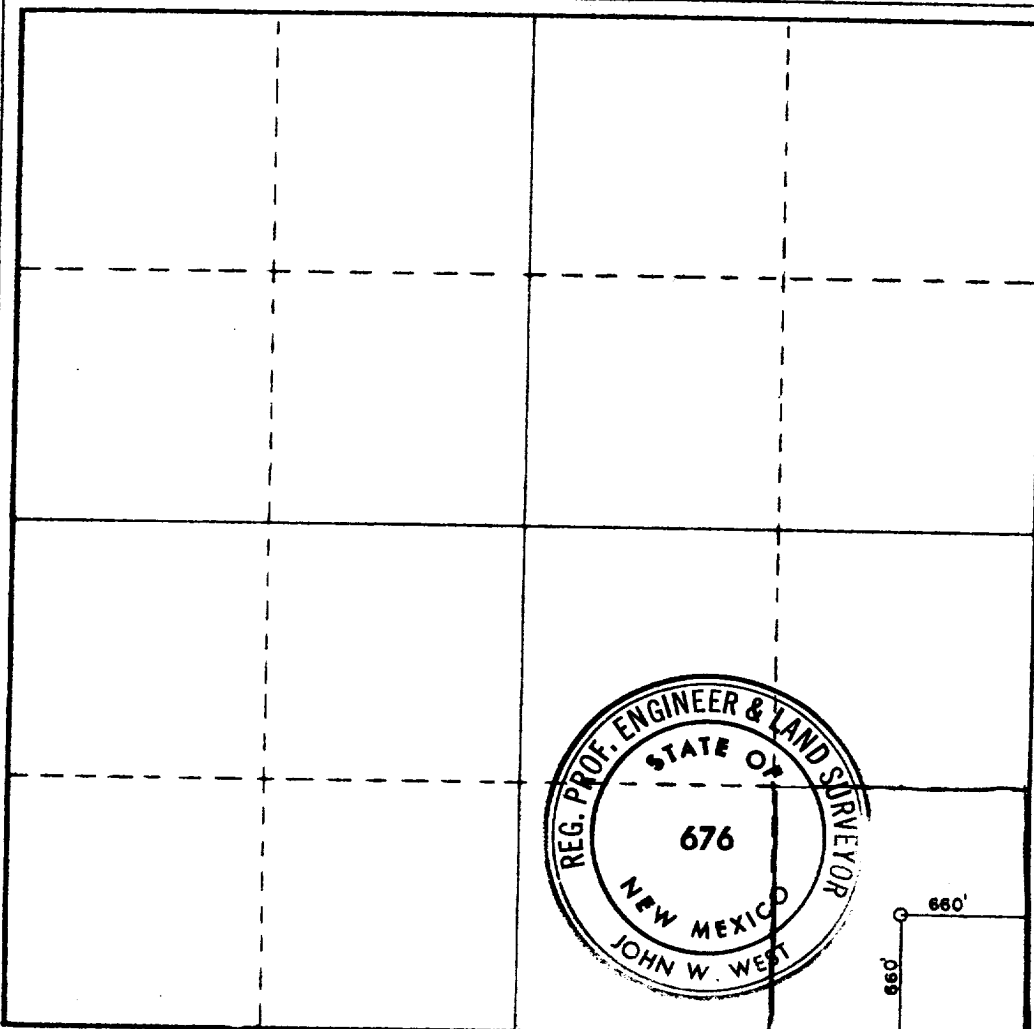
Operator Coronado Exploration Corp.			Lease C.X. Plains		Well No. 1
Unit Letter P	Section 19	Township 10 South	Range 28 East	County Chaves	
Actual Footage Location of Well: 660 feet from the South line and 660 feet from the East line					
Ground Level Elev. 3752.2	Producing Formation San Andres		Pool and Racetrack SA Ref.	Dedicated Acreage: 40 Acres	

1. Outline the acreage dedicated to the subject well by colored pencil or hachure marks on the plat below.
2. If more than one lease is dedicated to the well, outline each and identify the ownership thereof (both as to working interest and royalty).
3. If more than one lease of different ownership is dedicated to the well, have the interests of all owners been consolidated by communitization, unitization, force-pooling, etc?

☐ Yes ☒ No If answer is "yes," type of consolidation _____

If answer is "no," list the owners and tract descriptions which have actually been consolidated. (Use reverse side of this form if necessary.) All leases held by operator and participating parties

No allowable will be assigned to the well until all interests have been consolidated (by communitization, unitization, forced-pooling, or otherwise) or until a non-standard unit, eliminating such interests, has been approved by the Commission.



CERTIFICATION

I hereby certify that the information contained herein is true and complete to the best of my knowledge and belief.

Gail Gunnels

Name Gail Gunnels
Position Production Secretary
Company Coronado Exploration Corp.
Date November 24, 1980

I hereby certify that the well location shown on this plat was plotted from field notes of actual surveys made by me or under my supervision, and that the same is true and correct to the best of my knowledge and belief.

Date Surveyed 11-21-80
Registered Professional Engineer and/or Land Surveyor

John W. West

Certificate No. JOHN W. WEST 676	676
PATRICK A. ROMERO 6663	6663
Ronald J. Eidson 3239	3239

