

NO. OF COPIES RECEIVED	
DISTRIBUTION	
SANTA FE	1
FILE	1
U.S.G.S.	
LAND OFFICE	
OPERATOR	1

NEW MEXICO OIL CONSERVATION COMMISSION

DEC 3 1980

O. C. D.  
ARTESIA, OFFICE

30-005-60830

Form C-101  
Revised 1-1-65

5A. Indicate Type of Lease	
STATE <input type="checkbox"/>	FEE <input checked="" type="checkbox"/>
5. State Oil & Gas Lease No.	

APPLICATION FOR PERMIT TO DRILL, DEEPEN, OR PLUG BACK

1a. Type of Work		7. Unit Agreement Name	
b. Type of Well DRILL <input checked="" type="checkbox"/> DEEPEN <input type="checkbox"/> PLUG BACK <input type="checkbox"/> OIL WELL <input checked="" type="checkbox"/> GAS WELL <input type="checkbox"/> OTHER <input type="checkbox"/> SINGLE ZONE <input checked="" type="checkbox"/> MULTIPLE ZONE <input type="checkbox"/>		8. Farm or Lease Name O'Brien Ranch	
2. Name of Operator Amoco Production Company		9. Well No. 1	
3. Address of Operator P.O. Box 68, Hobbs, NM 88240		10. Field and Pool, or Wildcat Wildcat Fusselman	
4. Location of Well UNIT LETTER G LOCATED 1980 FEET FROM THE North LINE AND 1980 FEET FROM THE East LINE OF SEC. 26 TWP. 8-S RGE. 29-E NMPM		12. County Chaves	
19. Proposed Depth 9400'		19A. Formation Fusselman	
20. Rotary or C.T. Rotary		21. Elevations (show whether DT, RT, etc.) 4045.7' GL	
21A. Kind & Status Plug. Bond Blanket-on-file		21B. Drilling Contractor NA	
22. Approx. Date Work will start 12-9-80			

23.

PROPOSED CASING AND CEMENT PROGRAM

SIZE OF HOLE	SIZE OF CASING	WEIGHT PER FOOT	SETTING DEPTH	SACKS OF CEMENT	EST. TOP
17-1/2"	13-3/8"	48#	300'	Circulate	Surface
12-1/4"	9-5/8"	36#	2600'	Circulate	Surface
8-3/4"	5-1/2"	17#, 20#	9400'	Cmt to 500' above Wolfcamp	6180'

Propose to drill and equip well in the Fusselman formation. After reaching TD, logs will be run and evaluated. Perforate and stimulate as necessary in attempting commercial production.

Mud program: 0-300' Native mud and fresh water  
300-2600' Native mud and brine  
2600-TD Commercial mud and brine with minimum properties for safe hole conditions

BOP program attached

APPROVAL VAND  
FOR 90 DAYS UNLESS  
DRILLING COMMENCES

0+6-NMOCD, A 1-Hou 1-Susp 1-LBG 1-W. Stafford, Hou

EXPIRES 3-5-81

IN ABOVE SPACE DESCRIBE PROPOSED PROGRAM: IF PROPOSAL IS TO DEEPEN OR PLUG BACK, GIVE DATA ON PRESENT PRODUCTIVE ZONE AND PROPOSED NEW PRODUCTIVE ZONE. GIVE BLOWOUT PREVENTER PROGRAM, IF ANY.

I hereby certify that the information above is true and complete to the best of my knowledge and belief.

Signed Benton Green Title Assistant Administrative Analyst Date 12-3-1980

(This space for State Use)

APPROVED BY W.A. Gressitt TITLE SUPERVISOR, DISTRICT II DATE DEC 5 1980

CONDITIONS OF APPROVAL, IF ANY:

NEW MEXICO OIL CONSERVATION COMMISSION  
WELL LOCATION AND ACREAGE DEDICATION PLAT

Form C-102  
Supersedes C-128  
Effective 1-1-65

All distances must be from the outer boundaries of the Section

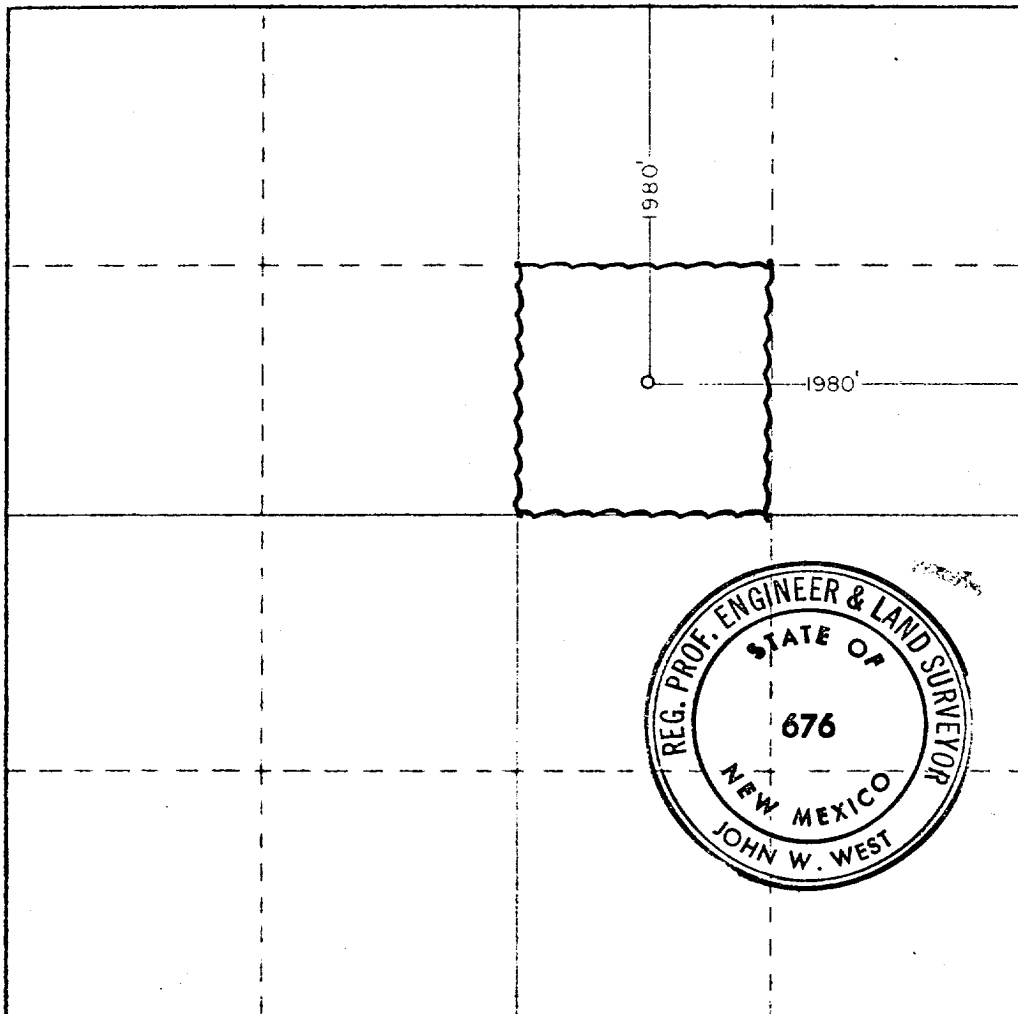
Operator <b>Amoco Production Co.</b>		Lease <b>O'Brien Ranch</b>		Well No. <b>1</b>
Section Letter <b>G</b>	Section <b>26</b>	Township <b>8 South</b>	Range <b>29 East</b>	County <b>Chaves</b>
Actual Footage Location of Well: <b>1980</b> feet from the <b>East</b> line and <b>1980</b> feet from the <b>North</b> line				
Ground Elev. <b>4045.7</b>	Producing Formation <b>Fusselman</b>	Pool <b>Wildcat Fusselman</b>	Dedicated Acreage: <b>40</b> Acres	

1. Outline the acreage dedicated to the subject well by colored pencil or hatchure marks on the plat below.
2. If more than one lease is dedicated to the well, outline each and identify the ownership thereof (both as to working interest and royalty).
3. If more than one lease of different ownership is dedicated to the well, have the interests of all owners been consolidated by communitization, unitization, force-pooling, etc?

☐ Yes ☐ No If answer is "yes," type of consolidation \_\_\_\_\_

If answer is "no," list the owners and tract descriptions which have actually been consolidated. (Use reverse side of this form if necessary.) \_\_\_\_\_

No allowable will be assigned to the well until all interests have been consolidated (by communitization, unitization, forced-pooling, or otherwise) or until a non-standard unit, eliminating such interests, has been approved by the Commission.



CERTIFICATION

I hereby certify that the information contained herein is true and complete to the best of my knowledge and belief.

Name *Benton Green*  
Position  
**Asst. Admin. Analyst**  
Company  
**Amoco Production Company**  
Date  
**12-3-80**

I hereby certify that the well location shown on this plat was plotted from field notes of actual surveys made by me or under my supervision, and that the same is true and correct to the best of my knowledge and belief.

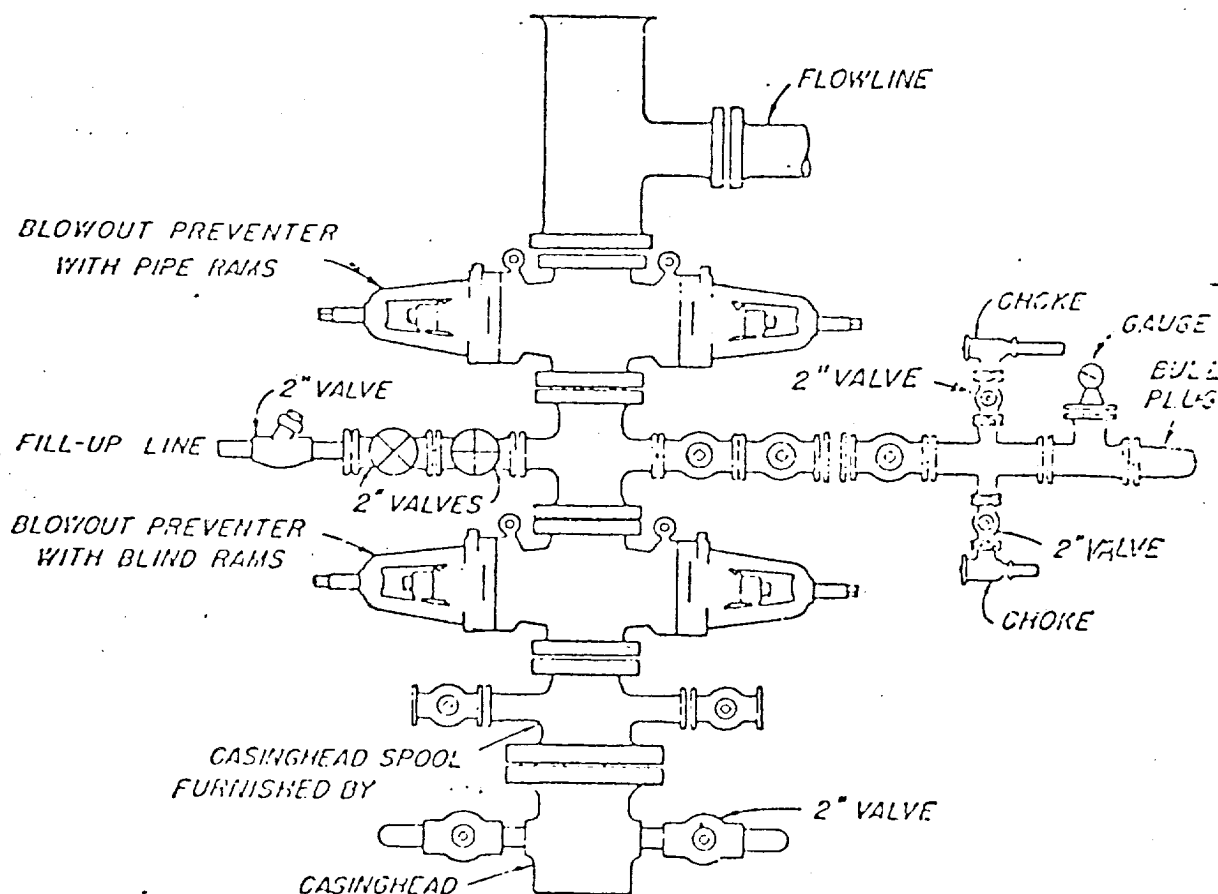
Date Surveyed  
**12-2-80**  
Registered Professional Engineer and/or Land Surveyor  
*John W. West*  
Certificate No. **JOHN W. WEST 676**  
**PATRICK A. ROMERO 6868**  
**Ronald J. Eidson 3239**

330 660 990 1320 1650 1980 2310 2640 2970 3300 3630 3960 4290 4620 4950 5280 5610 5940 6270 6600

ATTACHMENT "B"  
NOTES

1. Blow-out preventers and master valve to be fluid operated and oil fittings must be in good condition, 3,000# W.P. (6,000 p.s.i. test), minimum.
2. Equipment through which bit must pass shall be as large as the inside diameter of the casing that is being drilled through.
3. Nipple above blow-out preventer shall be same size as casing being drilled through.
4. Kelly cock required, 3,000# W.P. (6,000 p.s.i. test) minimum.
5. OHSCO or comparable safety valve must be available on rig floor at all times with proper connection or sub, 3,000# W.P. (6,000 p.s.i. test), minimum.
6. Blow-out preventers and master valve while drilling intermediate hole to 6000' may be 2,000# W.P. (4,000 p.s.i. test), minimum.
7. Choke assembly, beyond second valve from cross, may be positioned (Optional) outside of derrick foundation.
8. Spool or cross may be eliminated if connections are available in the lower part of the blow-out preventer body.
9. Plug valves - gate valves are optional. Valves shown as 2" are minimum size.
10. Casing head and casing head spool, including attached valves, to be furnished by Amoco.
11. Rams in preventers will be installed as follows:  

When drilling, use:	When running casing, use:
Top Preventer - Drill pipe rams	Top Preventer - Casing rams
Bottom Preventer - Blind rams or master valve	Bottom Preventer - Blind rams or master valve



### BLOWOUT PREVENTER HOOK-UP

AMOCO PRODUCTION COMPANY

### EXHIBIT D-1 MODIFIED

JUNE 1, 1962