

DEC 8 1980

O. C. D.  
ARTESIA, OFFICE

5A. Indicate Type of Lease

STATE ☒ FEE ☐

5. State Oil & Gas Lease No.

L-5252

7. Unit Agreement Name

8. Farm or Lease Name

Amoco State

9. Well No.

1

10. Field and Pool, or Wildcat

Wildcat

12. County

Chaves

19. Proposed Depth

6800

19A. Formation

Fusselman

20. Rotary or C.T.

Rotary

Elevations (Show whether Dr, R, etc.)

3949 GR

21A. Kind & Status Plug. Bond

Blanket

21B. Drilling Contractor

Cactus Drilling Co.

22. Approx. Date Work will start

12/10/80

PROPOSED CASING AND CEMENT PROGRAM

SIZE OF HOLE	SIZE OF CASING	WEIGHT PER FOOT	SETTING DEPTH	SACKS OF CEMENT	EST. TOP
15"	11 3/4	42#	350	250	Circ
10 3/4	8 5/8	24#	2700	700	Circ
7 7/8	4 1/2	10.5#	6800	325	5300

Blowout Preventor: 12" Series 900 Shaefer double  
Hydraulic, Payne closing unit & accumulator.

Completion to be conventional perforation & treatment.

APPROVAL VAND  
FOR 90 DAYS UNLESS  
DRILLING COMMENCED,

EXPIRES 3-9-81

ABOVE SPACE DESCRIBE PROPOSED PROGRAM; IF PROPOSAL IS TO DEEPEN OR PLUG BACK, GIVE DATA ON PRESENT PRODUCTIVE ZONE AND PROPOSED NEW PRODUCTION ZONE. GIVE BLOWOUT PREVENTER PROGRAM, IF ANY.

I hereby certify that the information above is true and complete to the best of my knowledge and belief.

W. A. Gressett Title Agent Date 12/5/80

(This space for State Use)

APPROVED BY W. A. Gressett TITLE SUPERVISOR, DISTRICT II DATE DEC 9 1980

CONDITIONS OF APPROVAL, IF ANY:

MEXICO OIL CONSERVATION COMMISS. N  
WELL LOCATION AND ACREAGE DEDICATION PLAT

Form C-102  
Supersedes C-128  
Effective 1-1-65

All distances must be from the outer boundaries of the Section.

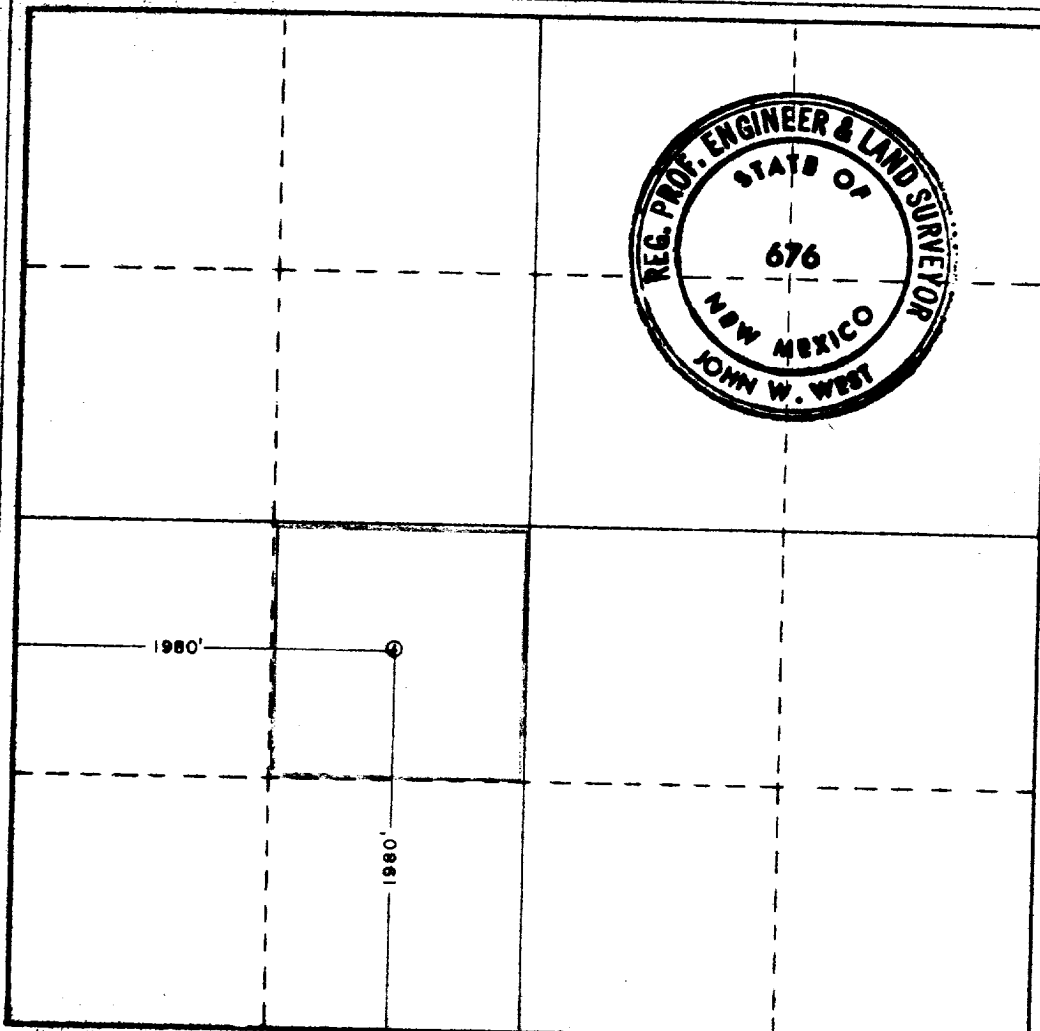
Operator <b>Amex Petroleum Corp.</b>			Lease <b>Amoco State</b>		Well No. <b>1</b>
Unit Letter <b>K</b>	Section <b>1</b>	Township <b>8S</b>	Range <b>27E</b>	County <b>Chaves Co.</b>	
Actual Footage Location of Well: <b>1980'</b> feet from the <b>South</b> line and <b>1980'</b> feet from the <b>West</b> line					
Ground Level Elev. <b>3949'</b>	Producing Formation <b>Fusselman</b>		Pool <b>Wildcat</b>		Dedicated Acreage: <b>40</b> Acres

1. Outline the acreage dedicated to the subject well by colored pencil or hachure marks on the plat below.
2. If more than one lease is dedicated to the well, outline each and identify the ownership thereof (both as to working interest and royalty).
3. If more than one lease of different ownership is dedicated to the well, have the interests of all owners been consolidated by communitization, unitization, force-pooling, etc?

☐ Yes ☐ No If answer is "yes," type of consolidation \_\_\_\_\_

If answer is "no," list the owners and tract descriptions which have actually been consolidated. (Use reverse side of this form if necessary.) \_\_\_\_\_

No allowable will be assigned to the well until all interests have been consolidated (by communitization, unitization, forced-pooling, or otherwise) or until a non-standard unit, eliminating such interests, has been approved by the Commission.



CERTIFICATION

I hereby certify that the information contained herein is true and complete to the best of my knowledge and belief.

Name Donna Walker  
Position **Agent**  
Company **Amex Petroleum Corp.**

Date **December 1, 1980**

I hereby certify that the well location shown on this plat was plotted from field notes of actual surveys made by me or under my supervision, and that the same is true and correct to the best of my knowledge and belief.

Date Surveyed **November 21, 1980**

Registered Professional Engineer and/or Land Surveyor

John W. West  
Certificate No. **JOHN W. WEST 676**  
**PATRICK A. ROMERO 6885**  
**Ronald J. Eidson 3239**

