

| | |
|------------------------|---|
| NO. OF COPIES RECEIVED | 5 |
| DISTRIBUTION | |
| SANTA FE | |
| FILE | |
| U.S.G.S. | |
| LAND OFFICE | |
| OPERATOR | 1 |

NEW MEXICO OIL CONSERVATION COMMISSION

DEC 11 1980

O. C. D.
ARTESIA OFFICE

30-005-60837

Form C-101
Revised 1-4-65

| |
|--|
| 5A. Indicate Type of Lease STATE <input type="checkbox"/> FEE <input checked="" type="checkbox"/> |
| 5. State Oil & Gas Lease No. |
| 7. Unit Agreement Name |
| 8. Farm or Lease Name Harper |
| 9. Well No. 1 |
| 10. Field and Pool, or Wildcat Wildcat San Andres |
| 12. County Chaves |
| 19. Proposed Depth 2800 |
| 19A. Formation San Andres |
| 20. Rotary or C.T. Rotary |
| 21. Elevations (Show whether DF, RT, etc.) 3945' GL |
| 21A. Kind & Status Plug. Bond Statewide |
| 21B. Drilling Contractor Artesia Fishing Tool |
| 22. Approx. Date Work will start January 20, 1981 |

APPLICATION FOR PERMIT TO DRILL, DEEPEN, OR PLUG BACK

1a. Type of Work
DRILL ☒ DEEPEN ☐ PLUG BACK ☐

1b. Type of Well
OIL WELL ☒ GAS WELL ☐ OTHER ☐

2. Name of Operator
C. E. LaRue and B. N. Muncy, Jr. ✓

3. Address of Operator
P. O. Box 196 Artesia, New Mexico 88210

4. Location of Well
UNIT LETTER M LOCATED 660 FEET FROM THE South LINE
660 FEET FROM THE West LINE OF SEC. 32 TWP. 7S RGE. 28E NMPM

11. Elevations (Show whether DF, RT, etc.)
3945' GL

21A. Kind & Status Plug. Bond
Statewide

21B. Drilling Contractor
Artesia Fishing Tool

22. Approx. Date Work will start
January 20, 1981

PROPOSED CASING AND CEMENT PROGRAM

| SIZE OF HOLE | SIZE OF CASING | WEIGHT PER FOOT | SETTING DEPTH | SACKS OF CEMENT | EST. TOP |
|--------------|----------------|-----------------|---------------|-----------------|------------|
| 12 1/4" | 8 5/8" | 28# | * 200' 300 | 125 | Circulated |
| 7 7/8" | 4 1/2" | 10 1/2# | 2800' | 150 | 1900' |

APPROVAL VALID
FOR 90 DAYS UNLESS
DRILLING COMMENCED,

EXPIRES 3-17-81

IN ABOVE SPACE DESCRIBE PROPOSED PROGRAM: IF PROPOSAL IS TO DEEPEN OR PLUG BACK, GIVE DATA ON PRESENT PRODUCTIVE ZONE AND PROPOSED NEW PRODUCTIVE ZONE. GIVE BLOWOUT PREVENTER PROGRAM, IF ANY.

I hereby certify that the information above is true and complete to the best of my knowledge and belief.

Signed Wm Muncy Title Agent Date December 10, 1980

(This space for State Use)

APPROVED BY W. A. Gussett TITLE SUPERVISOR, DISTRICT II DATE DEC 17 1980

CONDITIONS OF APPROVAL, IF ANY:

* as noted above

NEW MEXICO OIL CONSERVATION COMMISSION
WELL LOCATION AND ACREAGE DEDICATION PLAT

Form C-102
 Supersedes C-128
 Effective 1-1-65

All distances must be from the outer boundaries of the Section.

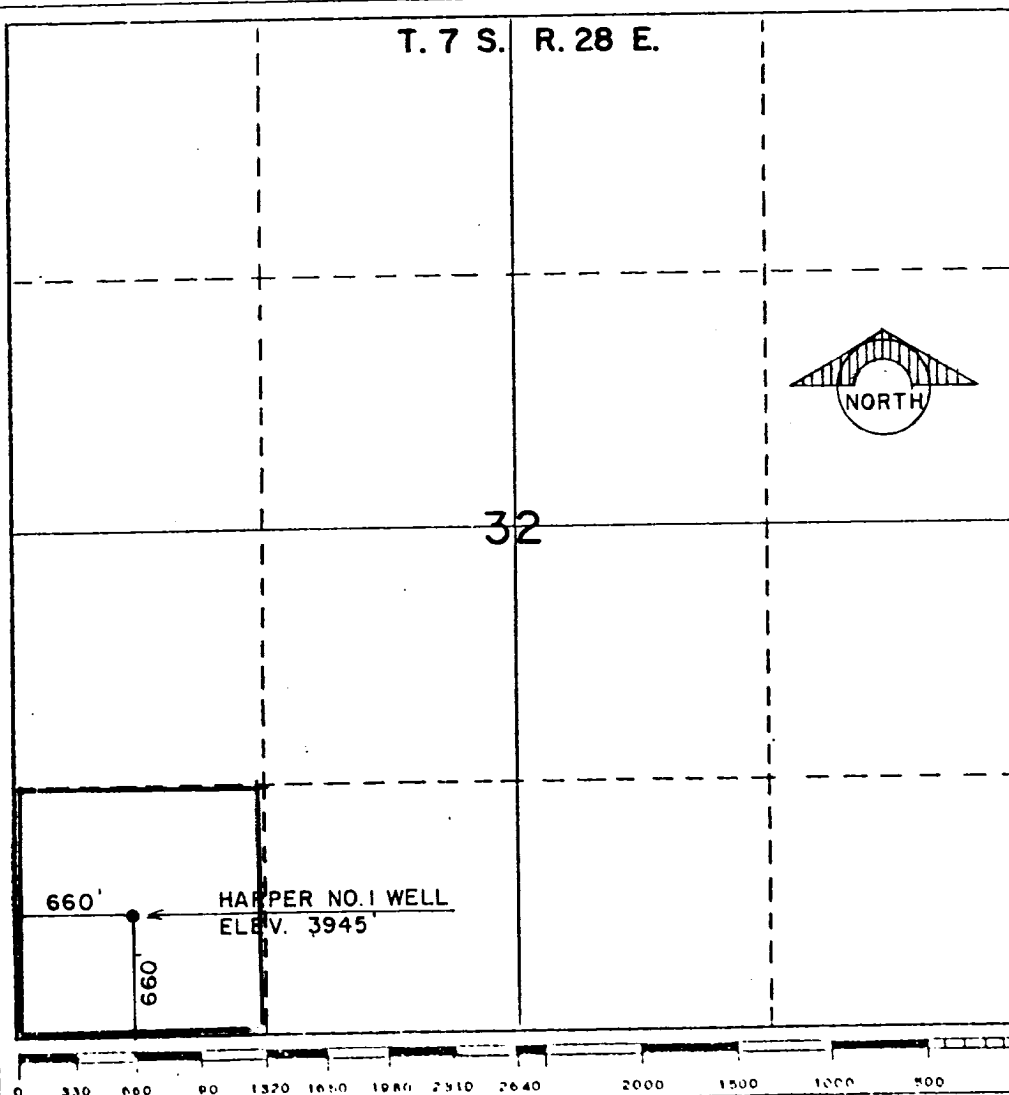
| | | | | | |
|--|--|------------------------|------------------------|---------------------------------------|----------------------|
| Operator C. E. LaRue and B. N. Muncy, Jr. | | | Lease Harper | | Well No. 1 |
| Unit Letter M | Section 32 | Township 7-S | Range 28-E | County Chaves | |
| Actual Footage Location of Well: 660 feet from the south line and 660 feet from the west line | | | | | |
| Ground Level Elev. 3945' | Producing Formation San Andres | Pool Wildcat | | Dedicated Acreage: 40 Acres | |

1. Outline the acreage dedicated to the subject well by colored pencil or hatchure marks on the plat below.
2. If more than one lease is dedicated to the well, outline each and identify the ownership thereof (both as to working interest and royalty).
3. If more than one lease of different ownership is dedicated to the well, have the interests of all owners been consolidated by communitization, unitization, force-pooling, etc?

☐ Yes ☐ No If answer is "yes," type of consolidation _____

If answer is "no," list the owners and tract descriptions which have actually been consolidated. (Use reverse side of this form if necessary.) _____

No allowable will be assigned to the well until all interests have been consolidated (by communitization, unitization, forced-pooling, or otherwise) or until a non-standard unit, eliminating such interests, has been approved by the Commission.



CERTIFICATION

I hereby certify that the information contained herein is true and complete to the best of my knowledge and belief.

Name *B. N. Muncy*
 Position Agent
 Company _____
 Date December 10, 1980

I hereby certify that the well location shown on this plat was plotted from field notes of actual surveys made by me or under my supervision, and that the same is true and correct to the best of my knowledge and belief.

Date Surveyed 12-6-80
 Registered Professional Engineer and/or Land Surveyor

Thomas T. Mann
 Certificate No. **N.M. License No. 277**