

## WELL LOCATION AND ACREAGE DEDICATION PLAT

Effective 1-1-65

All distances must be from the outer boundaries of the Section.

Operator Sel-Co, Inc.		Lease Moonlight 4 West		Well No. #1
Unit Letter D	Section 4	Township 8 South	Range 28 East	County Chaves
Actual Postage Location of Well:				
660 feet from the North		Line and	660 feet from the West	Line
Ground Level Elev. 3953.1	Producing Formation San Andres	Pool Railroad Mountain-Wildcat	Dedicated Acreage: NW 1/4 NW 4 40.30 Acres	

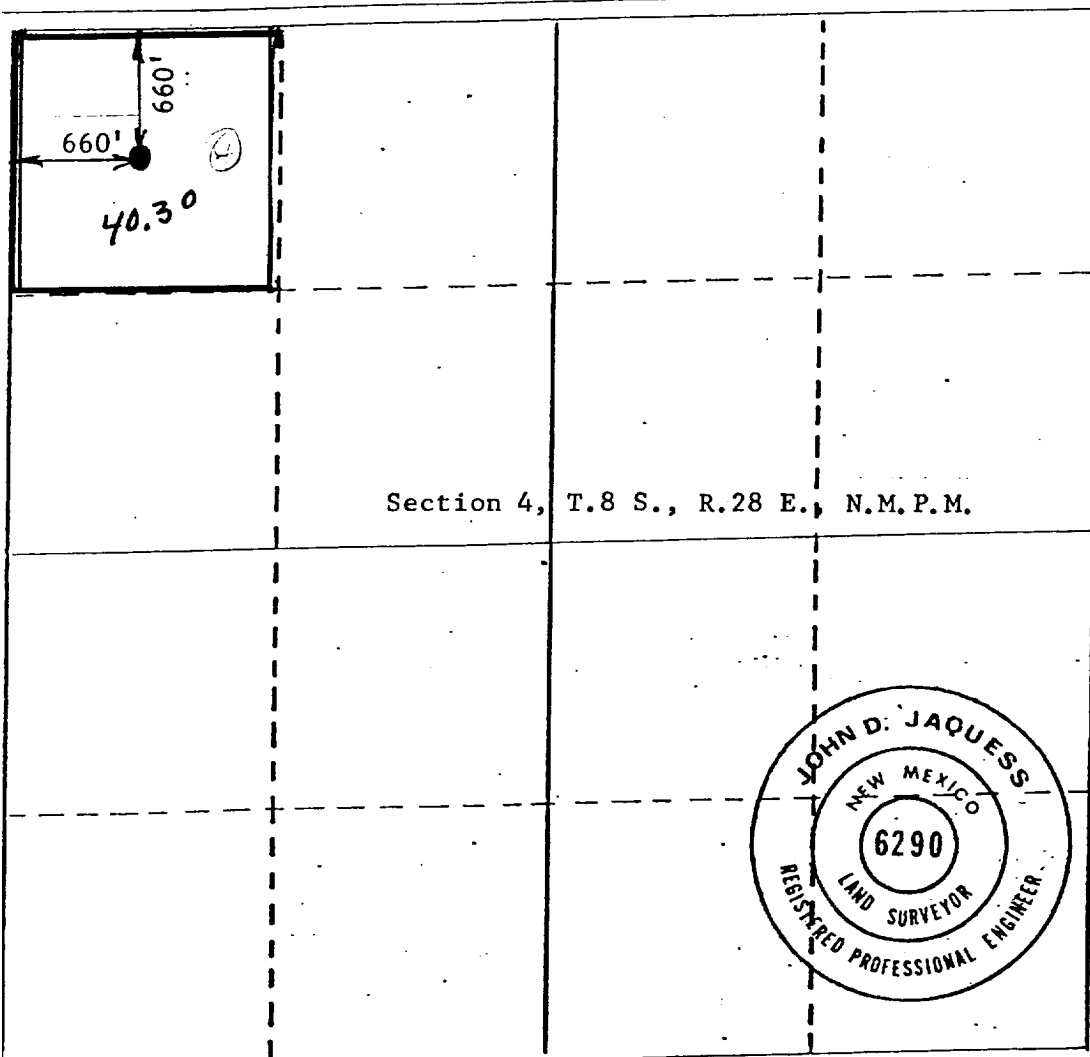
1. Outline the acreage dedicated to the subject well by colored pencil or hatchure marks on the plat below.
2. If more than one lease is dedicated to the well, outline each and identify the ownership thereof (both as to working interest and royalty). Moon Company, Trustee (7/8) Donald Winston (1/64); James T. Wyman & Frederick Winston, Tr. (1/128) Charles S. Kelly (1/256) Pauline Parker (1/128) James T. Wyman, Tr. (1/128) Marshall & Winston (1/64) Murray C. McKinnon (1/256) Tenneco Oil Co. (1/16)
3. If more than one lease of different ownership is dedicated to the well, have the interests of all owners been consolidated by communitization, unitization, force-pooling, etc?

Tenneco - Possible force pooling

☐ Yes ☐ No If answer is "yes," type of consolidation \_\_\_\_\_

If answer is "no," list the owners and tract descriptions which have actually been consolidated. (Use reverse side of this form if necessary.) \_\_\_\_\_

No allowable will be assigned to the well until all interests have been consolidated (by communitization, unitization, forced-pooling, or otherwise) or until a non-standard unit, eliminating such interests, has been approved by the Commission.



## CERTIFICATION

I hereby certify that the information contained herein is true and complete to the best of my knowledge and belief.

*Donald R. Craig*

Name

Donald R. Craig

Position

Agent

Company

SelCo, Inc.

Date

November 24, 1980

I hereby certify that the well location shown on this plat was plotted from field notes of actual surveys made by me or under my supervision, and that the same is true and correct to the best of my knowledge and belief.

Date Surveyed

Nov. 6, 1980

Registered Professional Engineer  
and/or Land Surveyor

John D. Jaquess, P.E. &amp; L.S.

*John D. Jaquess*  
Certificate No. 6290

330 660 990 1320 1650 1980 2310 2640 2970 3300 3630 3960 4290 4620 4950 5280 5610 5940 6270 6600