

NO. OF COPIES RECEIVED	6
DISTRIBUTION	
SANTA FE	1
FILE	1 ✓
U.S.G.S.	2
LAND OFFICE	1
OPERATOR	1

RECEIVED
NEW MEXICO OIL CONSERVATION COMMISSION
JAN 13 1981
O. C. D.
ARTESIA, OFFICE

30-005-60850
 Form C-101
 Revised 1-1-65

5A. Indicate Type of Lease	
STATE <input checked="" type="checkbox"/>	FEE <input type="checkbox"/>
5. State Oil & Gas Lease No.	
L-6274	

APPLICATION FOR PERMIT TO DRILL, DEEPEN, OR PLUG BACK

1a. Type of Work		7. Unit Agreement Name	
DRILL <input checked="" type="checkbox"/> DEEPEN <input type="checkbox"/> PLUG BACK <input type="checkbox"/>		1	
b. Type of Well		8. Form of Lease Name	
OIL WELL <input type="checkbox"/> GAS WELL <input checked="" type="checkbox"/> OTHER <input type="checkbox"/> SINGLE ZONE <input type="checkbox"/> MULTIPLE ZONE <input type="checkbox"/>		Dee State "00"	
2. Name of Operator		9. Well No.	
Yates Petroleum Corporation ✓		1	
3. Address of Operator		10. Field and Pool, or Wildcat	
207 S. 4th Street, Artesia, NM 88210		Undes. Abo	
4. Location of Well		12. County	
UNIT LETTER M LOCATED 660 FEET FROM THE South LINE AND 660 FEET FROM THE West LINE OF SEC. 32 TWP. 5S RGE. 24E NMPM		Abo	
19. Proposed Depth		19A. Formation	
4500'		Abo	
20. Rotary or C.T.		Rotary	
21. Elevations (Show whether DF, RT, etc.)		22. Approx. Date Work will start	
3793.3 GL		ASAP	
21A. Kind & Status Plug. Bond		21B. Drilling Contractor	
Blanket		LaRue Drilling	

23.

PROPOSED CASING AND CEMENT PROGRAM

SIZE OF HOLE	SIZE OF CASING	WEIGHT PER FOOT	SETTING DEPTH	SACKS OF CEMENT	EST. TOP
17 1/2"	13 3/8"	48# J-55	Approx. 450	300 sx.	Circulate
7 7/8"	5 1/2" or 4 1/2"	15.5# or 10.5	TD	450 sx	Circulate

We proposed to drill and test the ABO and intermediate formations. Approximately 450' of surface casing will be set and cement circulated to shut off gravel and caving. If needed (lost circulation), 8 5/8" intermediate casing will run to 1500' and cement circulated. If commercial, production casing will be run and cemented with adequate cover, perforate and stimulate as needed for production.

MUD PROGRAM: FW gel and LCM to 1500', brine KCL to 3200', KCL drispak & starch to TD.
 MW 10-10.2, Vis 34-39, WL 14-7.

BOP PROGRAM: BOP's will be installed on 13 3/8" casing and tested daily.

GAS NOT DEDICATED.

APPROVAL VALID FOR 180 DAYS
 PERMIT EXPIRES 7-16-81
 UNLESS DRILLING UNDERWAY

IN ABOVE SPACE DESCRIBE PROPOSED PROGRAM: IF PROPOSAL IS TO DEEPEN OR PLUG BACK, GIVE DATA ON PRESENT PRODUCTIVE ZONE AND PROPOSED NEW PRODUCTIVE ZONE. GIVE BLOWOUT PREVENTER PROGRAM, IF ANY.

I hereby certify that the information above is true and complete to the best of my knowledge and belief.

Signed [Signature] Title Geographer Date 12-8-80
 (This space for State Use)

APPROVED BY [Signature] TITLE SUPERVISOR, DISTRICT II DATE JAN 16 1981

CONDITIONS OF APPROVAL, IF ANY:

NEW MEXICO OIL CONSERVATION COMMISSION
WELL LOCATION AND ACREAGE DEDICATION PLAT

Form C-102
Supersedes C-12
Effective 1-1-65

All distances must be from the outer boundaries of the Section.

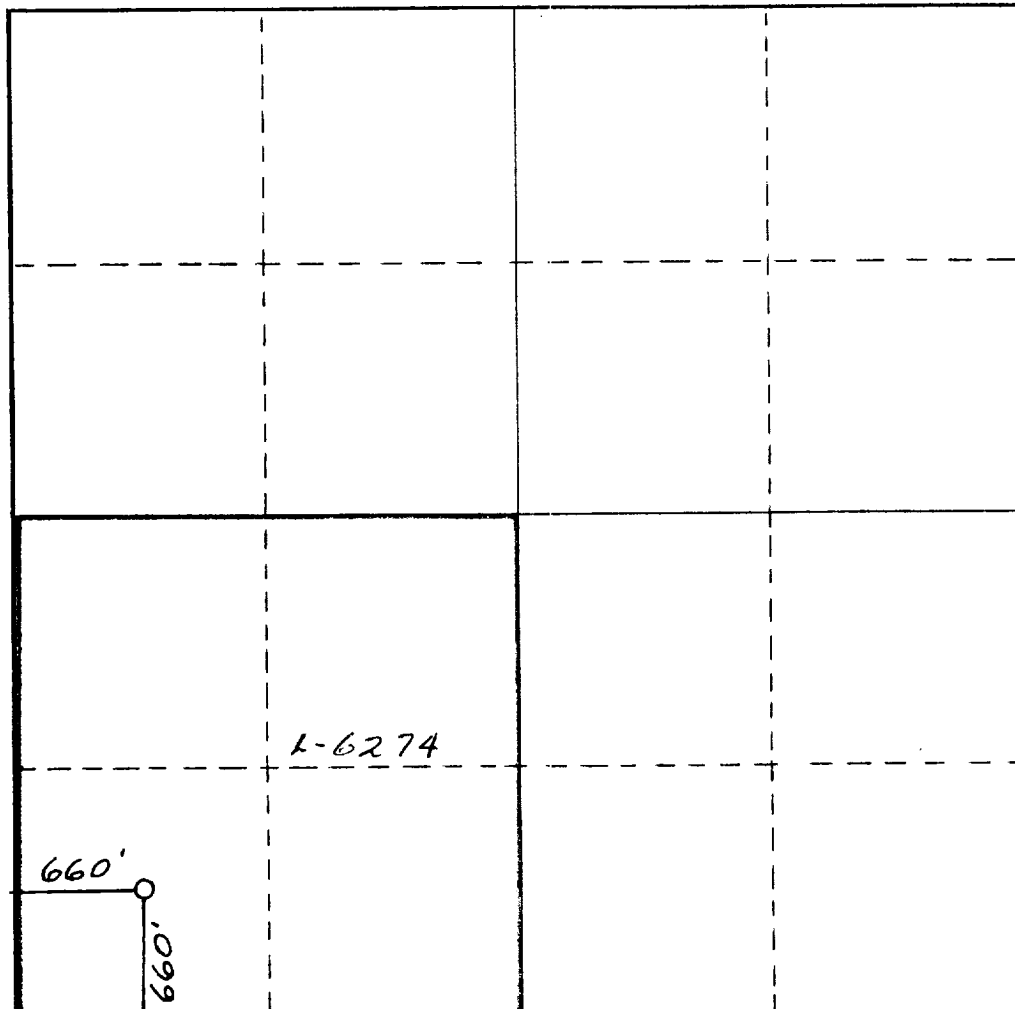
Operator Yates Petroleum Corporation		Lease "00" Dee State "00"		Well No. 1
Unit Letter M	Section 32	Township 5 South	Range 25 East	County Chaves
Actual Footage Location of Well: 660 feet from the South line and 660 feet from the West line				
Ground Level Elev. 3793.3'	Producing Formation ABO	Pool LINDES ABO	Dedicated Acreage: 160 Acres	

1. Outline the acreage dedicated to the subject well by colored pencil or hachure marks on the plat below.
2. If more than one lease is dedicated to the well, outline each and identify the ownership thereof (both as to working interest and royalty).
3. If more than one lease of different ownership is dedicated to the well, have the interests of all owners been consolidated by communitization, unitization, force-pooling, etc?

☐ Yes ☐ No If answer is "yes," type of consolidation _____

If answer is "no," list the owners and tract descriptions which have actually been consolidated. (Use reverse side of this form if necessary.) _____

No allowable will be assigned to the well until all interests have been consolidated (by communitization, unitization, forced-pooling, or otherwise) or until a non-standard unit, eliminating such interests, has been approved by the Commission.



CERTIFICATION

I hereby certify that the information contained herein is true and complete to the best of my knowledge and belief.

Blasero Rodriguez
Name

BLASERO RODRIGUEZ
Position

GEOGRAPHER
Company

YATES PETROLEUM CORP
Date

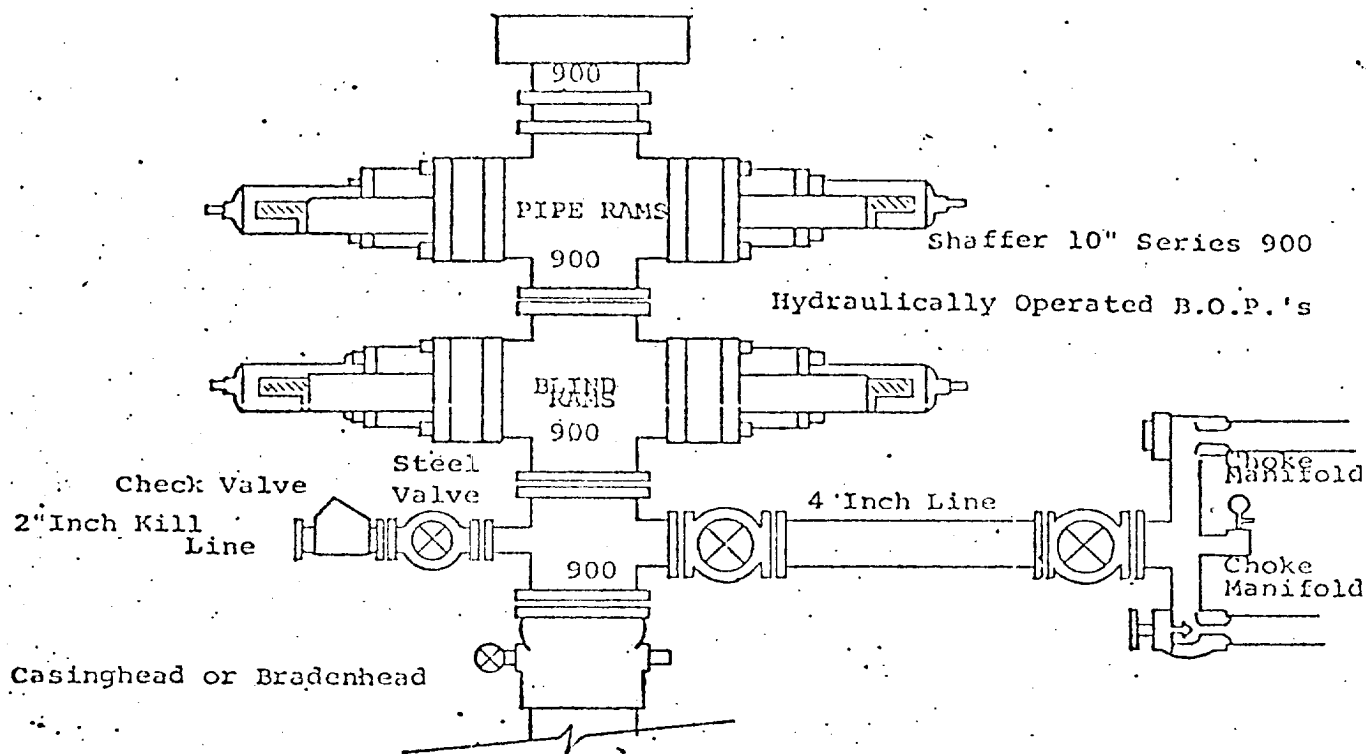
11-25-80

I hereby certify that the well location shown on this plat was plotted from field notes of actual surveys made by me or under my supervision, and that the same is true and correct to the best of my knowledge and belief.

Date Surveyed
November 6, 1980

Registered Professional Engineer
and/or Land Surveyor

9. Henschel
Certificate No. **3640**
NEW MEXICO
HERSCHEL
3640



THE FOLLOWING CONSTITUTE MINIMUM BLOWOUT PREVENTER REQUIREMENTS

1. All preventers to be hydraulically operated with secondary manual controls installed prior to drilling out from under casing.
2. Choke outlet to be a minimum of 4" diameter.
3. Kill line to be of all steel construction of 2" minimum diameter.
4. All connections from operating manifolds to preventers to be all steel, hole or tube a minimum of one inch in diameter.
5. The available closing pressure shall be at least 15% in excess of that required with sufficient volume to operate the B.O.P.'s.
6. All connections to and from preventer to have a pressure rating equivalent to that of the B.O.P.'s.
7. Inside blowout preventer to be available on rig floor.
8. Operating controls located a safe distance from the rig floor.
9. Hole must be kept filled on trips below intermediate casing. Operator not responsible for blowouts resulting from not keeping hole full.
10. D. P. float must be installed and used below zone of first gas intrusion.