

UNITED STATES
DEPARTMENT OF THE INTERIOR
GEOLOGICAL SURVEY(Other instructions on
reverse side)

30-005-60860

APPLICATION FOR PERMIT TO DRILL, DEEPEN, OR PLUG BACK

1a. TYPE OF WORK

DRILL ☒DEEPEN ☐PLUG BACK ☐

b. TYPE OF WELL

OIL
WELL ☐GAS
WELL ☒

OTHER

SINGLE
ZONE ☒MULTIPLE
ZONE ☐

2. NAME OF OPERATOR

MESA PETROLEUM CO. ✓

3. ADDRESS OF OPERATOR

1000 VAUGHN BUILDING/MIDLAND, TX 79701

4. LOCATION OF WELL (Report location clearly and in accordance with any State requirements.)*

At surface

1980' FNL & 660' FEL

At proposed prod. zone
SAME

14. DISTANCE IN MILES AND DIRECTION FROM NEAREST TOWN OR POST OFFICE*

27 MILES NORTH/NORTHEAST OF ROSWELL

15. DISTANCE FROM PROPOSED*

LOCATION TO NEAREST
PROPERTY OR LEASE LINE, FT.
(Also to nearest drlg. unit line, if any)

1980'/660'

16. NO. OF ACRES IN LEASE

1600

17. NO. OF ACRES ASSIGNED

TO THIS WELL
160

18. DISTANCE FROM PROPOSED LOCATION*

TO NEAREST WELL, DRILLING, COMPLETED,
OR APPLIED FOR, ON THIS LEASE, FT.

1320'

19. PROPOSED DEPTH

4300'

20. ROTARY OR CABLE TOOLS

ROTARY

21. ELEVATIONS (Show whether DF, RT, GR, etc.)

3850.7' GR

22. APPROX. DATE WORK WILL START*

MARCH 1, 1981

23. PROPOSED CASING AND CEMENTING PROGRAM

SIZE OF HOLE	SIZE OF CASING	WEIGHT PER FOOT	SETTING DEPTH	QUANTITY OF CEMENT
17 1/2"	13 3/8"	48#	500'	CIRCULATE TO SURFACE
11"	8 5/8"	24#	1600'	SUFFICIENT TO ISOLATE WATER O&G
7 7/8"	4 1/2"	10.5	4300'	SUFFICIENT TO COVER ALL PAY

Propose to drill 17 1/2" surface hole to 500' or deeper with air to set 13 3/8" surface casing. Will cement to surface then reduce hole to 11" and drill to 1600'. Will set 8 5/8" casing if water zones have been encountered or omit if not. Will reduce hole to 7 7/8" and drill to total depth using air, foam, or mud as required. After log evaluation, 4 1/2" production casing may be run and cemented with sufficient amounts and kinds to isolate and seal off any fresh water, oil, or gas zones encountered. RECEIVED

Operator's Gas Sales Are Not Dedicated.

FEB 06 1981

XC: USGS (6), TLS, CEN RCDS, ACCTG, HOBBS OFFICE, MEC, LAND, PARTNERS, FILE
O. C. D.
APPROVAL OFFICE

IN ABOVE SPACE DESCRIBE PROPOSED PROGRAM: If proposal is to deepen or plug back, give data on present productive zone and proposed new productive zone. If proposal is to drill or deepen directionally, give pertinent data on subsurface locations and measured and true vertical depths. Give blowout preventer program, if any.

24.

SIGNED

R. E. Mathis

TITLE

REGULATORY COORDINATOR

DATE

JANUARY 23, 1981

(This space for Federal or State office use)

PERMIT NO.

APPROVAL DATE

APPROVED BY

TITLE

ACTIVE DISTRICT ENGINEER

DATE

FEB 04 1981

CONDITIONS OF APPROVAL, IF ANY:

*SUFFICIENT TO THE 15' to 13 3/8"

*See Instructions On Reverse Side

UNITED STATES
DEPARTMENT OF THE INTERIOR
GEOLOGICAL SURVEY

30-005-60860

APPLICATION FOR PERMIT TO DRILL, DEEPEN, OR PLUG BACK

1a. TYPE OF WORK

DRILL ☒DEEPEN ☐PLUG BACK ☐

5. LEASE DESIGNATION AND SERIAL NO.

NM - 27970

6. IF INDIAN, ALLOTTEE OR TRIBE NAME

7. UNIT AGREEMENT NAME

8. FARM OR LEASE NAME

COYOTE FEDERAL

9. WELL NO.

5

10. FIELD AND POOL, OR WILDCAT

UNDESIGNATED ABO

11. SEC., T., R., M., OR BLK.
AND SURVEY OR AREAUL H
SEC 19, T7S, R25E

12. COUNTY OR PARISH 13. STATE

CHAVES

NEW MEXICO

b. TYPE OF WELL

OIL
WELL ☐GAS
WELL ☒

OTHER

SINGLE
ZONE ☒MULTIPLE
ZONE ☐

2. NAME OF OPERATOR

MESA PETROLEUM CO.

3. ADDRESS OF OPERATOR

1000 VAUGHN BUILDING/MIDLAND, TX 79701

4. LOCATION OF WELL (Report location clearly and in accordance with any State requirements.)*

At surface

1980' FNL & 660' FEL

At proposed prod. zone

SAME

14. DISTANCE IN MILES AND DIRECTION FROM NEAREST TOWN OR POST OFFICE*

27 MILES NORTH/NORTHEAST OF ROSWELL

15. DISTANCE FROM PROPOSED*

LOCATION TO NEAREST
PROPERTY OR LEASE LINE, FT.
(Also to nearest drlg. unit line, if any)

1980'/660'

16. NO. OF ACRES IN LEASE

1600

17. NO. OF ACRES ASSIGNED

TO THIS WELL
16018. DISTANCE FROM PROPOSED LOCATION*
TO NEAREST WELL, DRILLING, COMPLETED,
OR APPLIED FOR, ON THIS LEASE, FT.

1320'

19. PROPOSED DEPTH

4300'

20. ROTARY OR CABLE TOOLS

ROTARY

21. ELEVATIONS (Show whether DF, RT, GR, etc.)

3850.7' GR

22. APPROX. DATE WORK WILL START*

MARCH 1, 1981

23.

PROPOSED CASING AND CEMENTING PROGRAM

SIZE OF HOLE	SIZE OF CASING	WEIGHT PER FOOT	SETTING DEPTH	QUANTITY OF CEMENT
17 1/2"	13 3/8"	48#	500'	CIRCULATE TO SURFACE
11"	8 5/8"	24#	1600'	*SUFFICIENT TO ISOLATE WATER O&G
7 7/8"	4 1/2"	10.5	4300'	SUFFICIENT TO COVER ALL PAY

Propose to drill 17 1/2" surface hole to 500' or deeper with air to set 13 3/8" surface casing. Will cement to surface then reduce hole to 11" and drill to 1600'. Will set 8 5/8" casing if water zones have been encountered or omit if not. Will reduce hole to 7 7/8" and drill to total depth using air, foam, or mud as required. After log evaluation, 4 1/2" production casing may be run and cemented with sufficient amounts and kinds to isolate and seal off any fresh water, oil, or gas zones encountered.

Operator's Gas Sales Are Not Dedicated.

RECEIVED
FEB 06 1981

O. C. D.

ARTESIA, OFFICE

XC: USGS (6), TLS, CEN RCDS, ACCTG, HOBBS OFFICE, MEC, LAND, PARTNERS, FILE

IN ABOVE SPACE DESCRIBE PROPOSED PROGRAM: If proposal is to deepen or plug back, give data on present productive zone and proposed new productive zone. If proposal is to drill or deepen directionally, give pertinent data on subsurface locations and measured and true vertical depths. Give blowout preventer program, if any.

24.

SIGNED

R. E. Mathis

TITLE

REGULATORY COORDINATOR

DATE

JANUARY 23, 1981

(This space for Federal or State office use)

PERMIT NO.

APPROVAL DATE

APPROVED BY

TITLE

DATE

CONDITIONS OF APPROVAL, IF ANY:

*SUFFICIENT TO TIE BACK 8 5/8" to 13 3/8"

*See Instructions On Reverse Side

NEW MEXICO OIL CONSERVATION COMMISSION
WELL LOCATION AND ACREAGE DEDICATION PLAT

Form C-102
Supersedes C-12H
Effective 1-1-85

All distances must be from the outer boundaries of the Section

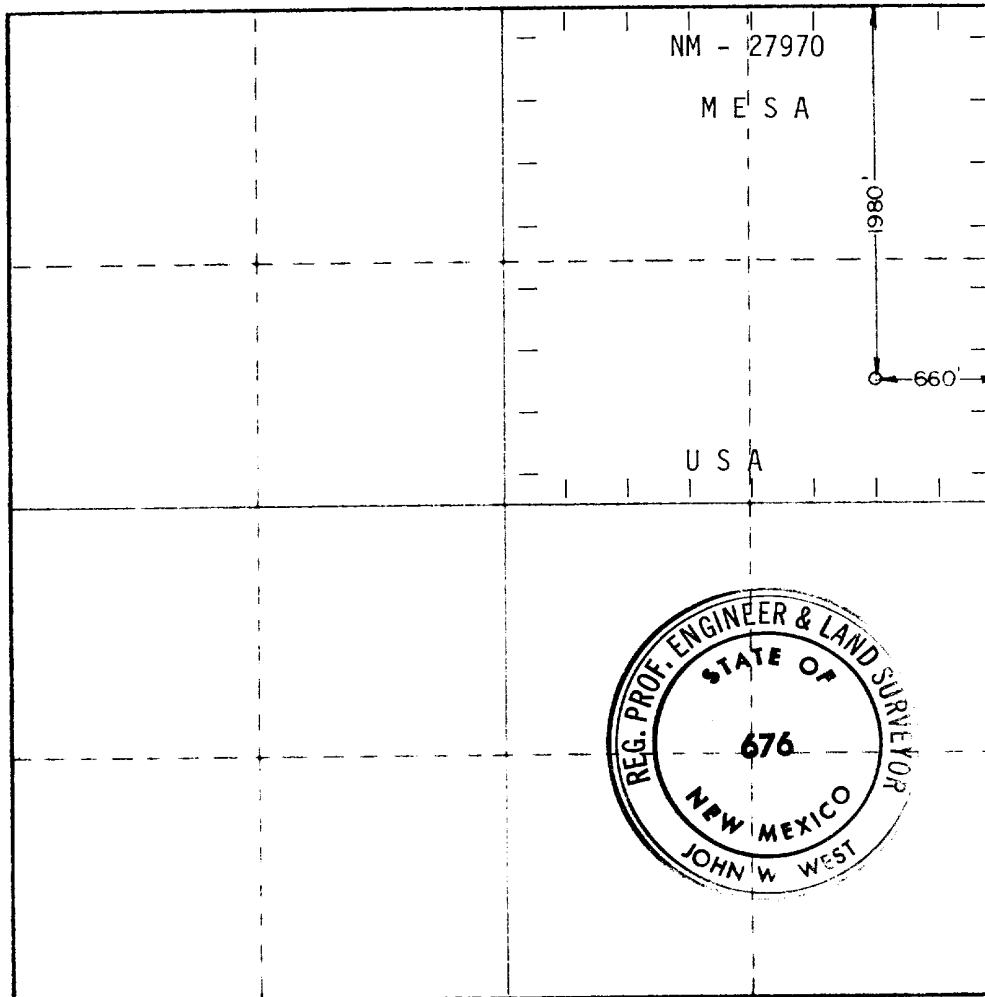
Owner Mesa Petroleum Co.			Lease Coyote Federal		Well No. 5
Tract Letter H	Section 19	Township 7 South	Range 25 East	County Chaves	
Actual Portage Location of Well:					
1980	feet from the	North	line and	660	feet from the East line
Ground Level Elev. 3850.7	Producing Formation ABO		Pool UNDESIGNATED	Dedicated Acreage: NE/4 160	

1. Outline the acreage dedicated to the subject well by colored pencil or hatchure marks on the plat below.
2. If more than one lease is dedicated to the well, outline each and identify the ownership thereof (both as to working interest and royalty).
3. If more than one lease of different ownership is dedicated to the well, have the interests of all owners been consolidated by communization, unitization, force-pooling, etc?

☐ Yes ☐ No If answer is "yes," type of consolidation _____

If answer is "no," list the owners and tract descriptions which have actually been consolidated. (Use reverse side of this form if necessary.) _____

No allowable will be assigned to the well until all interests have been consolidated (by communization, unitization, forced-pooling, or otherwise) or until a non-standard unit, eliminating such interests, has been approved by the Commission.



CERTIFICATION

I hereby certify that the information contained herein is true and complete to the best of my knowledge and belief.

R. E. Mathis

Name

R. E. MATHIS

Position

REGULATORY COORDINATOR

Company

MESA PETROLEUM CO.

Date

JANUARY 23, 1981

I hereby certify that the well location shown on this plat was plotted from field notes of actual surveys made by me or under my supervision, and that the same is true and correct to the best of my knowledge and belief.

Date Surveyed

August 14, 1980

Registered Professional Engineer and Land Surveyor

John W. West

Certificate No. **JOHN W. WEST 676**
PATRICK A. ROMERO 6663
Ronald J. Eidson 3239

0 330 660 990 1320 1650 1980 2310 2640 2970 3300 3630 3960 4290 4620 4950 5280 5610 5940 6270 6600

APPLICATION FOR DRILLING
MESA PETROLEUM CO.
COYOTE FEDERAL #5
1980' FNL & 660' FEL, SEC 19, T7S, R25E
CHAVES COUNTY, NEW MEXICO

LEASE NO: NM - 27970

In conjunction with Form 9-331C, Application For Permit to Drill subject well, the following additional information is provided:

1. Applicable portions of the GENERAL REQUIREMENTS FOR OIL AND GAS OPERATIONS ON FEDERAL LEASES, Roswell District, Geological Survey of September 1, 1980 will be adhered to.

2. Geological markers are estimated as follows:

Seven Rivers	Surface
San Andres	462'
Glorietta	1348'
Tubb	2892'
Abo	3552'
Hueco	4257'

3. Hydrocarbon bearing strata may occur in the Abo formation. No fresh water is expected to be encountered below 800'.
4. The Casing and Blowout Preventer Program will be determined by hole conditions as encountered. Anticipate drilling with air or foam using ram type preventer and rotating head for well control. The 13 3/8" casing will be set at approximately 800' to protect any fresh water zones and cemented to the surface. The 8 5/8" casing will be set at approximately 1600' if water zones have been encountered or omitted if not and ram type preventers installed. Sufficient amounts and kinds of cement would be used to ensure any water, gas or oil zones encountered are isolated and shut off down to the casing point if run. The 4 1/2" production casing will be set at total depth or shallower depending upon the depth of the deepest commercial hydrocarbon bearing strata encountered.
5. No drill stem tests or coring program is planned. The logging program may consist of a GR-CNL from surface to total depth and FDC from casing point to total depth.

Application For Drilling

Page 2

6. Anticipated drilling time is fifteen days with completion operations to follow as soon as a completion unit is available.

MULTI-POINT SURFACE USE AND OPERATION PLAN

MESA PETROLEUM CO.
COYOTE FEDERAL #5
1980' FNL & 660' FEL, SEC 19, T7S, R25E
CHAVES COUNTY, NEW MEXICO

LEASE NO: NM - 27970

This plan is submitted with the Application for Permit to Drill the above described well. The purpose of this plan is to describe the location of the proposed well, the proposed construction activities and operational plan in both the actual and post drilling-completion operations.

1. Existing Roads

- A. Exhibit I is a portion of a highway map showing the location of the proposed well as staked. The proposed well is approximately 27 miles north/northeast of Roswell, New Mexico.
- B. Directions: Travel north of Roswell on US 285 for approximately 15 miles then turn east at El Paso Plant road gate then turn left on ranch road and follow it for approximately 7 miles then south on lease road past Mesa Coyote Federal #4 for 1/2 mile to the location.

2. Planned Access Road

- A. Length and width: The new access road will be 12' wide (16' ROW) and approximately 1200' from the Coyote Federal #4 to the location.

(See Exhibit II for details)
- B. Construction: The new road will be constructed by grading and topping with compacted caliche. The surface will be crowned, with drainage on both sides. (See Exhibit III).
- C. Culverts, Gates and Cattleguards: None
- D. Cut and Fill: In order for the location to be level, approximately 3' of cut from the south side will be moved to the north side for fill.

3. Location of Existing Wells

Existing wells within a two-mile radius are depicted by Exhibit IV.

4. Location of Existing and/or Proposed Facilities

If the well proves to be commercial, the necessary production facilities, gas separation-process equipment and tank battery, will be installed on the drilling pad.

5. Location and Type of Water Supply

It is planned to drill the proposed well with air. If water is needed, it will be obtained from commercial sources and will be trucked to the wellsite over the existing roads and the proposed access road shown on Exhibits I and II or piped in by temporary line from a nearby source.

6. Source of Construction Materials

Caliche for surfacing the road and the wellsite pad will be obtained on location by the dirt contractor. Top soil from the location will be stockpiled near the location for future rehabilitation use. No surface materials will be disturbed except for those necessary for the actual grading and leveling of the drillsite and access road.

7. Methods of Handling Waste Disposal

- A. Drill cuttings will be disposed of in the reserve pits.
- B. Drilling fluids will be allowed to evaporate in the reserve pits until the pits are dry.
- C. All pits will be fenced with normal fencing material to prevent livestock from entering the area.
- D. Water produced during operations will be collected in tanks until hauled to an approved disposal system, or separate disposal application will be submitted to the USGS for approval.
- E. Current laws and regulations pertaining to the disposal of human waste will be complied with.
- F. Trash, waste paper, garbage and junk will be buried in a separate trash pit and covered with a minimum of 24 inches of dirt. All waste material will be contained to prevent scattering by the wind.
- G. All trash and debris will be buried or removed from the wellsite within 30 days after finished and/or completion operations.

Multi-Point Surface Use and Operation Plan

Page 3

8. Ancillary Facilities: None required.

9. Wellsite Layout:

- A. Exhibit V shows the relative location and dimensions of the well pad, reserve pits, and major rig components. The pad and pit area has been staked and flagged.
- B. Some leveling of the wellsite will be required. See Exhibit III for additional details.
- C. The reserve pit will be plastic lined.

10. Plans for Restoration of the Surface:

- A. After completion of drilling and/or completion operations all equipment and other material not needed for operations will be removed. Pits will be filled and location cleaned of all trash and junk to leave the wellsite in an aesthetically pleasing a condition as possible.
- B. Any unguarded pits containing fluids will be fenced until they are filled.
- C. If the proposed well is non-productive, all rehabilitation and/or vegetation requirements of the Bureau of Land Management and the United States Geological Survey will be complied with and will be accomplished as expeditiously as possible. All pits will be filled and leveled within 90 days after abandonment, if drying conditions permit.

11. Other Information:

- A. Topography: The land surface in the vicinity of the wellsite is gently sloping to the north.
- B. Soil: The topsoil at the wellsite is sandy loam.
- C. Flora and Fauna: The vegetative cover consists of Tabosa and other prairie grasses, creosote bush, yucca, cactus, prairie flowers and other miscellaneous desert growth. Wildlife in the area probably includes those typical of semi-arid desert land. The area is used for grazing.
- D. Ponds and Streams: Coyote Draw is 1/2 mile to the north of the location and an earth tank and a windmill are on the north bank of the draw.

Multi-Point Surface Use and Operation Plan

Page 4

- E. Residences and Other Structures: There are no residences or other structures in the vicinity of the proposed well.
- F. Land Use: Grazing.
- G. Surface Ownership: The wellsite is on Federal Surface.
- H. There is no evidence of any major archaeological, historical, or cultural sites in the area. NMAS, Inc. has conducted an archaeological study of this site and provides this report to interested parties.

12. Operator's Representatives:

- A. The field representatives responsible for assuring compliance with the approved surface use and operations plan are as follows:

J. Wootten
P. O. Box 1756
Hobbs, New Mexico 88240
(505-393-4425) - Office
(505-393-6033) - Home

C. C. Wheeler
1000 Vaughn Building
Midland, Texas 79701
(915-683-5391) - Office
(915-683-6123) - Home

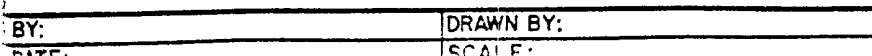
13. Certification

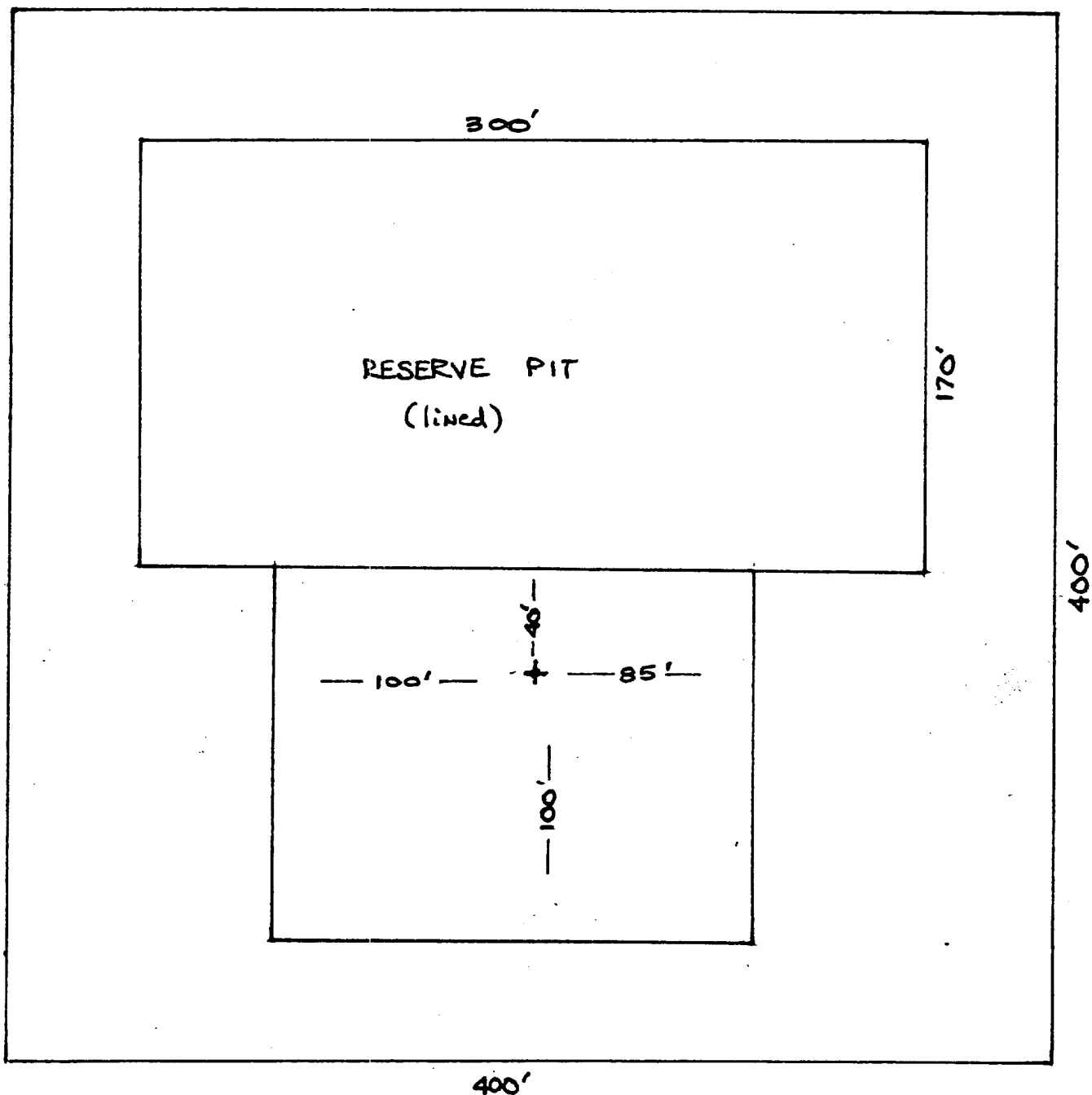
I hereby certify that I, or persons under my direct supervision, have inspected the proposed drillsite and access route; that I am familiar with the conditions which presently exist; that the statements made in this plan are, to the best of my knowledge true and correct; and, that the work associated with the operations proposed herein will be performed by Mesa Petroleum Co. and its contractors and subcontractors in conformity with this plan and the terms and conditions under which it is approved.

January 23, 1981



Michael P. Hosuton
Operations Manager





← N →

