

| | |
|------------------------|---|
| NO. OF COPIES RECEIVED | 5 |
| DISTRIBUTION | |
| SANTA FE | 1 |
| FILE | 1 |
| U.S.G.S. | 2 |
| LAND OFFICE | |
| OPERATOR | 1 |

NEW MEXICO OIL CONSERVATION COMMISSION

30-005-60868

Form C-101
Revised 1-1-65

FEB 06 1981

O.C.C.
ARTESIA OFFICE

| | |
|--------------------------------|---|
| 5A. Indicate Type of Lease | |
| STATE <input type="checkbox"/> | FEE <input checked="" type="checkbox"/> |

5. State Oil & Gas Lease No.

7. Unit Agreement Name

8. Farm or Lease Name

DAVIS

9. Well No.

1

10. Field and Pool, or Wildcat

WILDCAT

12. County

CHAVES

19. Proposed Depth

4400'

19A. Formation

ABO

20. Rotary or C.T.

ROTARY

1. Elevations (Show whether DF, RT, etc.)

21A. Kind & Status Plug. Bond

BLANKET

21B. Drilling Contractor

TOM BROWN

22. Approx. Date Work will start

APRIL 1, 1981

PROPOSED CASING AND CEMENT PROGRAM

| SIZE OF HOLE | SIZE OF CASING | WEIGHT PER FOOT | SETTING DEPTH | SACKS OF CEMENT | EST. TOP |
|--------------|----------------|-----------------|---------------|-----------------|--------------------------------|
| 17 1/2" | 13 3/8" | 48# | 800' | 500 | SURFACE |
| 11" | 8 5/8" | 24# | 1600' | 500 | SUFFICIENT TO ISOLATE WTR, O&G |
| 7 7/8" | 4 1/2" | 10.5# | 4400' | 500 | SUFFICIENT TO COVER ALL PAY |

Propose to drill 17 1/2" hole using air to 800' or deeper. Will set 13 3/8" surface casing and cement to surface. Will reduce hole to 11" and drill to 1600' to set 8 5/8" casing. Will nipple up ram type BOP's and reduce hole to 7 7/8" and drill to total depth using air, foam, or mud as required. After log evaluation, 4 1/2" casing may be run and cemented with sufficient kinds and amounts of cement to isolate and seal off any fresh water, oil, or gas zones encountered.

Gas Sales Are Not Dedicated.

APPROVAL VALID FOR 180 DAYS
PERMIT EXPIRES 8-17-81
UNLESS DRILLING UNDERWAY

XC: NMOCD (6), TLS, CEN RCDS, ACCTG, HOBBS OFFICE, MEC, LAND, PARTNERS, FILE

ABOVE SPACE DESCRIBE PROPOSED PROGRAM: IF PROPOSAL IS TO DEEPEN OR PLUG BACK, GIVE DATA ON PRESENT PRODUCTIVE ZONE AND PROPOSED NEW PRODUCTIVE ZONE. GIVE BLOWOUT PREVENTER PROGRAM, IF ANY.

I hereby certify that the information above is true and complete to the best of my knowledge and belief.

Signed R. E. Mark Title Regulatory Coordinator Date FEBRUARY 5, 1981

(This space for State Use)

APPROVED BY W. A. Grasset TITLE SUPERVISOR, DISTRICT II DATE FEB 17 1981

CONDITIONS OF APPROVAL, IF ANY:

Notify N.M.O.C.C. in sufficient time to witness cementing the 13 3/8" casing

N MEXICO OIL CONSERVATION COMMISS
WELL LOCATION AND ACREAGE DEDICATION PLAT

Form C-102
 Supersedes C-128
 Effective 1-1-65

All distances must be from the outer boundaries of the Section

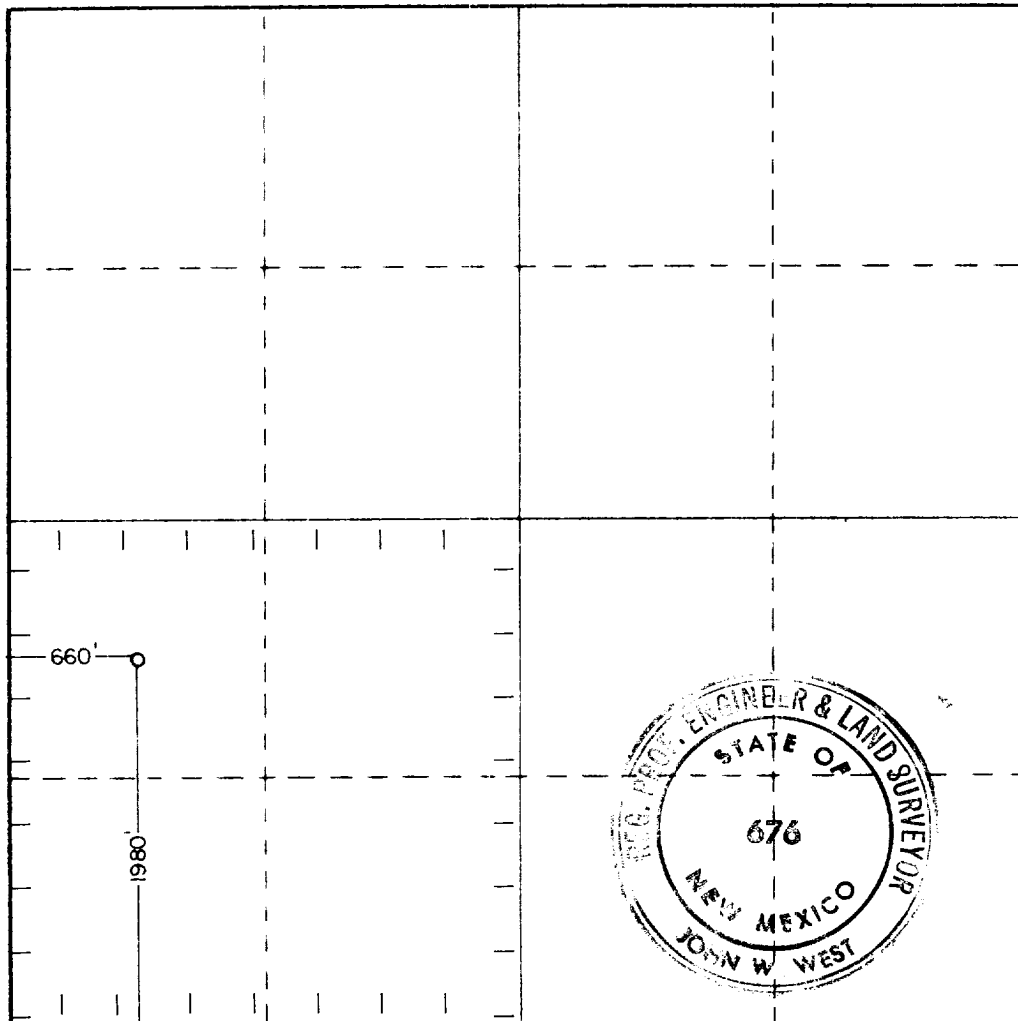
| | | | | | |
|---|-----------------------------------|------------------------------------|-------------------------|---|----------------------|
| Operator Mesa Petroleum Company | | | Lease Davis | | Well No. 1 |
| Unit Letter L | Section 12 | Township 7 South | Range 25 East | County Chaves | |
| Actual Portage Location of Well: 1980 feet from the South line and 660 feet from the West line | | | | | |
| Ground Level Elev. 3700.6 | Producing Formation ABO | Pool WILDCAT <i>also</i> | | Dedicated Acreage: SW/4 160 Acres | |

1. Outline the acreage dedicated to the subject well by colored pencil or hachure marks on the plat below.
2. If more than one lease is dedicated to the well, outline each and identify the ownership thereof (both as to working interest and royalty).
3. If more than one lease of different ownership is dedicated to the well, have the interests of all owners been consolidated by communitization, unitization, force-pooling, etc?

☐ Yes ☐ No If answer is "yes;" type of consolidation _____

If answer is "no," list the owners and tract descriptions which have actually been consolidated. (Use reverse side of this form if necessary.) _____

No allowable will be assigned to the well until all interests have been consolidated (by communitization, unitization, forced-pooling, or otherwise) or until a non-standard unit, eliminating such interests, has been approved by the Commission.



CERTIFICATION

I hereby certify that the information contained herein is true and complete to the best of my knowledge and belief.

R. E. Mathis

Name
R. E. MATHIS
 Position
REGULATORY COORDINATOR
 Company
MESA PETROLEUM CO.

Date
FEBRUARY 5, 1981

I hereby certify that the well location shown on this plat was plotted from field notes of actual surveys made by me or under my supervision, and that the same is true and correct to the best of my knowledge and belief.

Date Surveyed
1-28-81

Registered Professional Engineer and/or Land Surveyor

John W. West

Certificate No. **JOHN W. WEST 676**
PATRICK A. ROMERO 6863
Ronald J. Eidson 3239

