

OIL CONSERVATION DIVISION

STATE OF NEW MEXICO
ENERGY AND MINERALS DEPARTMENTP. O. BOX 2088
SANTA FE, NEW MEXICO 8750Form C-102
Revised 10-1-78

All distances must be from the outer boundaries of the Section.

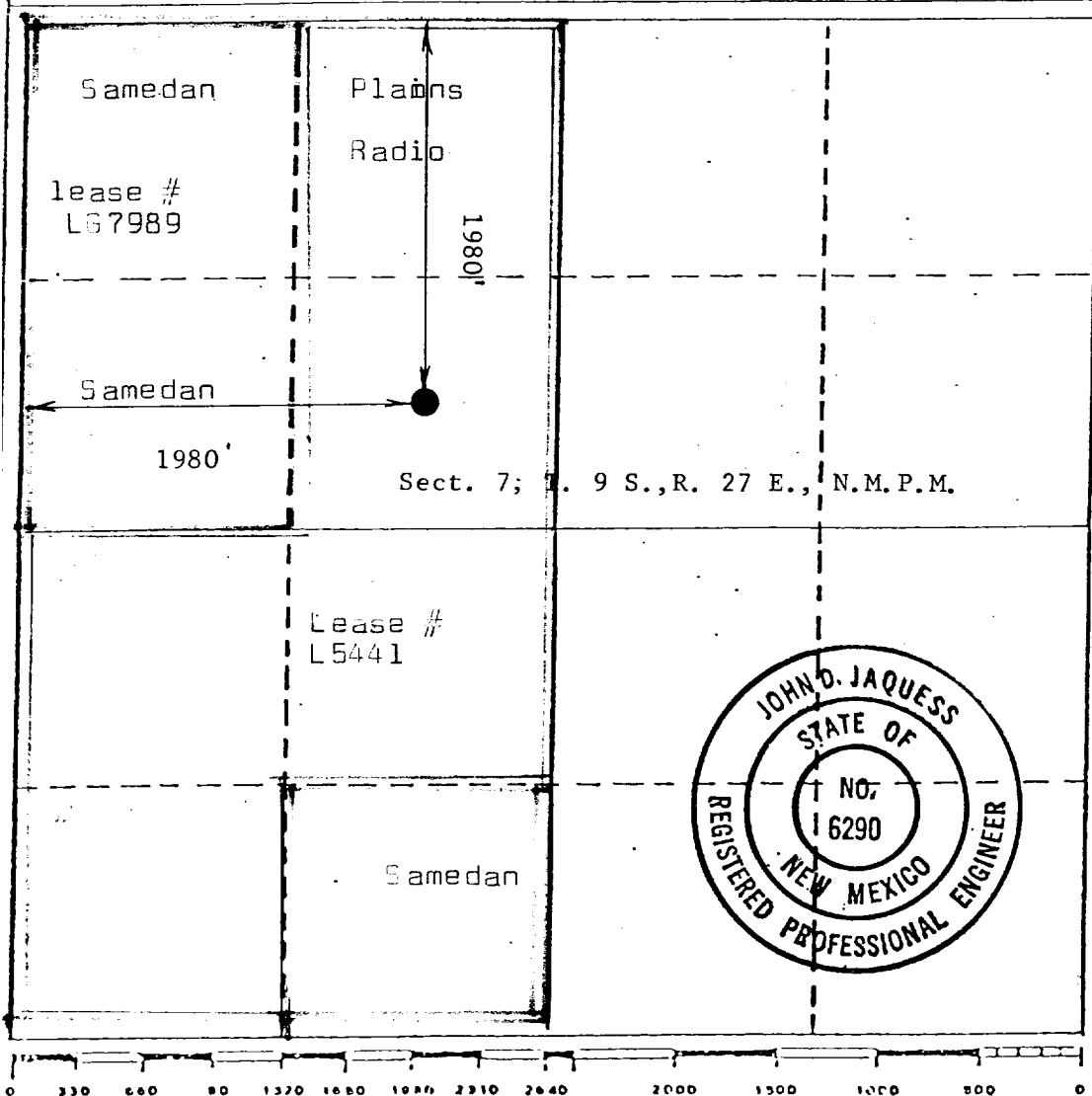
Operator Plains Radio Broadcasting		Lease Camel State		Well No. 1
Unit Letter F	Section 7	Township 9 South	Range 27 East	County Chaves
Actual Footage Location of Well:				
1980	feet from the	West	line and	1980
feet from the				North
Ground Level Elev. 3851	Producing Formation Penn		Pool Wildcat	Dedicated Acreage: 320 Acres

1. Outline the acreage dedicated to the subject well by colored pencil or hatchure marks on the plat below.
2. If more than one lease is dedicated to the well, outline each and identify the ownership thereof (both as to working interest and royalty).
3. If more than one lease of different ownership is dedicated to the well, have the interests of all owners been consolidated by communitization, unitization, force-pooling, etc?

☐ Yes ☒ No If answer is "yes," type of consolidation:

If answer is "no," list the owners and tract descriptions which have actually been consolidated. (Use reverse side of this form if necessary.)

No allowable will be assigned to the well until all interests have been consolidated (by communitization, unitization, forced-pooling, or otherwise) or until a non-standard unit, eliminating such interests, has been approved by the Division.



CERTIFICATION

I hereby certify that the information contained herein is true and complete to the best of my knowledge and belief.

Fred Pool, Jr.

Name

Contractor

Position

Fred Pool Drilling Co.

Company

2-9-81

Date

I hereby certify that the well location shown on this plat was plotted from field notes of actual surveys made by me or under my supervision, and that the same is true and correct to the best of my knowledge and belief.

Date Surveyed
January 29, 1981

Registered Professional Engineer
and/or Land Surveyor

John D. Jaquess
John D. Jaquess, P.E. & L.S.

Certificate No.
6290