

NO. OF COPIES RECEIVED	5
DISTRIBUTION	
SANTA FE	1
FILE	1
U.S.G.S.	1
LAND OFFICE	1
OPERATOR	1

NEW MEXICO OIL CONSERVATION COMMISSION

FEB 13 1981

O. C. D.  
ARTESIA OFFICE

30-005-60871  
Form C-101  
Revised 1-1-65

5A. Indicate Type of Lease  
STATE ☐ FEDERAL ☒

5. State Oil & Gas Lease No.

APPLICATION FOR PERMIT TO DRILL, DEEPEN, OR PLUG BACK

1a. Type of Work

1b. Type of Well  
DRILL ☒ DEEPEN ☐ PLUG BACK ☐  
OIL WELL ☐ GAS WELL ☒ OTHER ☐ SINGLE ZONE ☐ MULTIPLE ZONE ☐

7. Well Agreement Name

8. Firm or Lease Name

Newman "PP"

9. Well No.

1

10. Field and Pool, or Wildcat

Wildcat

Yates Petroleum Corporation

Address of Operator

207 S. 4th Street, Artesia, NM 88210

Location of Well

UNIT LETTER G LOCATED 1980 FEET FROM THE North LINE

1980 FEET FROM THE East LINE OF SEC. 21 TWP. 10S RGE. 26E NMPM

12. County

Chaves

13. Proposed Depth

approx. 5150'

14A. Formation

Abo

14B. Rotary or C.T.

Rotary

15. Casing Program (Show whether DP, KL, etc.)

3699.2 GL

21A. Kind & Status Plug Bond

Blanket

21B. Drilling Contractor

LaRue Drilling Co.

22. Approx. Date Work will start

As soon as possible

PROPOSED CASING AND CEMENT PROGRAM

SIZE OF HOLE	SIZE OF CASING	WEIGHT PER FOOT	SETTING DEPTH	SACKS OF CEMENT	EST. TOP
17 1/2"	13 3/8"	48# J-55	400'	180 sx.	circulate
12 1/4"	8 5/8" or 9 5/8"	24# J-55	1000'	600 sx.	circulate
7 7/8"	5 1/2" or 4 1/2"	15.5 or 10.5#	TD	250 sx.	circulate

We propose to drill and test the Abo and intermediate formations. Approximately 400' of surface casing will be set and cement circulated. Approximately 1000' of intermediate casing will be set and cemented to the surface. If commercial, production casing will be run and set w/500' of cement cover, perforated and stimulated for production.

MUD PROGRAM: Fresh water gel and LCM to 400' fresh water to 3800', KCL 8 cut brine to 4100'. Salt Gel, Starch, Drispak to TD. MW 8.7 - 9.0, Vis 34 - 39, WL 14 - 17.

BOP PROGRAM: BOP's will be installed on 8 5/8" casing and tested daily.

*gas is not dedicated*

APPROVAL VALID FOR 180 DAYS  
PERMIT EXPIRES 8-17-81  
UNLESS DRILLING UNDERWAY

ABOVE SPACE DESCRIBE PROPOSED PROGRAM; IF PROPOSAL IS TO DEEPEN OR PLUG BACK, GIVE DATA ON PRESENT PRODUCTIVE ZONE AND PROPOSED NEW PRODUCTIVE ZONE. GIVE BLOWOUT PREVENTER PROGRAM, IF ANY.

I hereby certify that the information above is true and complete to the best of my knowledge and belief.

Signed Blasencio Rodriguez Title Geographer Date 2-11-81

(This space for State Use)

APPROVED BY W. A. Gressett TITLE SUPERVISOR, DISTRICT II DATE FEB 17 1981

CONDITIONS OF APPROVAL, IF ANY:

**Y MEXICO OIL CONSERVATION COMMISSION  
WELL LOCATION AND ACREAGE DEDICATION PLAT**

Form C-102  
Supersedes C-128  
Effective 1-1-65

All distances must be from the outer boundaries of the Section.

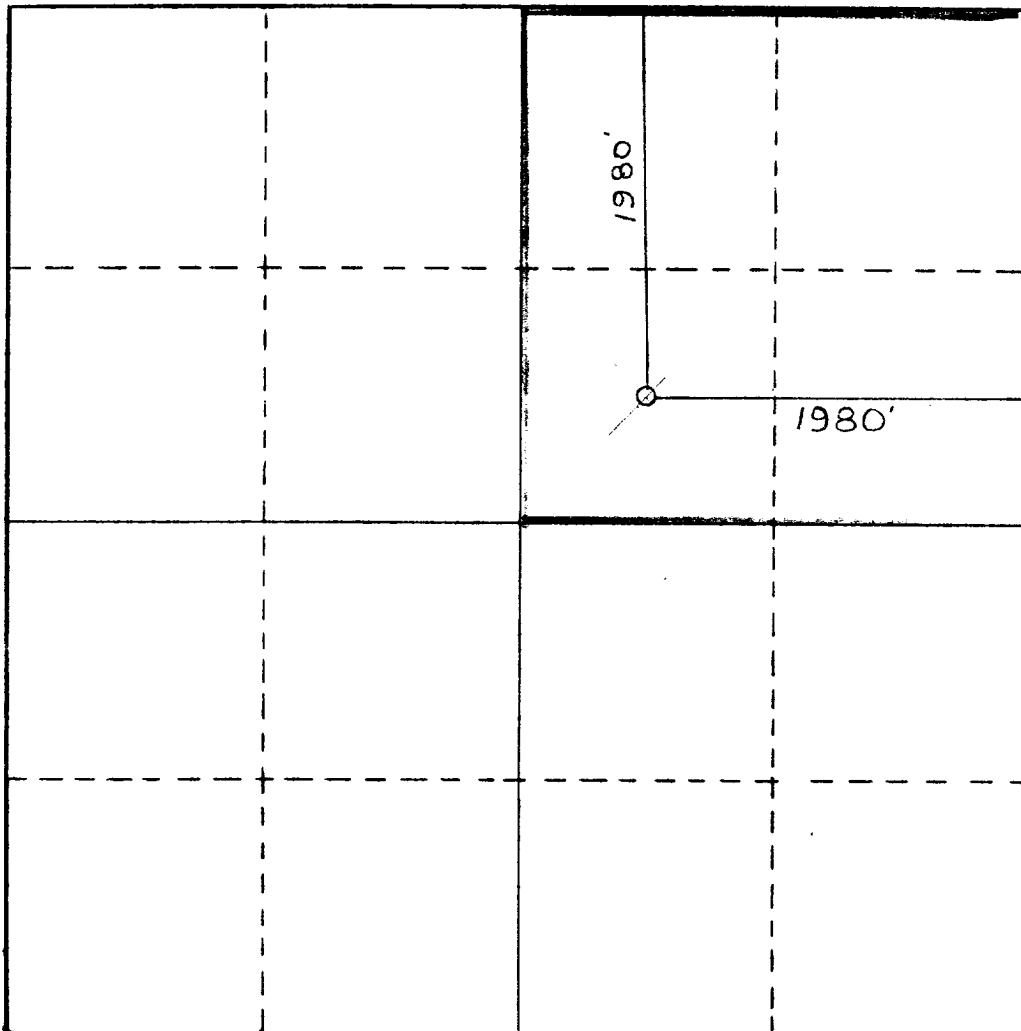
Operator <b>YATES PETROLEUM CORPORATION</b>			Lease <b>NEWMAN "PP"</b>		Well No. <b>1</b>
Unit Letter <b>G</b>	Section <b>21</b>	Township <b>10S</b>	Range <b>26E</b>	County <b>CHAVES</b>	
Actual Footage Location of Well: <b>1980</b> feet from the <b>NORTH</b> line and <b>1980</b> feet from the <b>EAST</b> line					
Ground Level Elev. <b>3699.2</b>	Producing Formation <b>ABO</b>	Pool <b>WILDCAT</b>		Dedicated Acreage: <b>160</b> Acres	

1. Outline the acreage dedicated to the subject well by colored pencil or hachure marks on the plat below.
2. If more than one lease is dedicated to the well, outline each and identify the ownership thereof (both as to working interest and royalty).
3. If more than one lease of different ownership is dedicated to the well, have the interests of all owners been consolidated by communitization, unitization, force-pooling, etc?

☐ Yes    ☐ No    If answer is "yes," type of consolidation \_\_\_\_\_

If answer is "no," list the owners and tract descriptions which have actually been consolidated. (Use reverse side of this form if necessary.) \_\_\_\_\_

No allowable will be assigned to the well until all interests have been consolidated (by communitization, unitization, forced-pooling, or otherwise) or until a non-standard unit, eliminating such interests, has been approved by the Commission.



**CERTIFICATION**

I hereby certify that the information contained herein is true and complete to the best of my knowledge and belief.

*Gerardo Rodriguez*  
Name

**GERARDO RODRIGUEZ**  
Position

**GEOGRAPHER**

Company  
**YATES PETROLEUM CORP.**

Date  
**2-9-81**

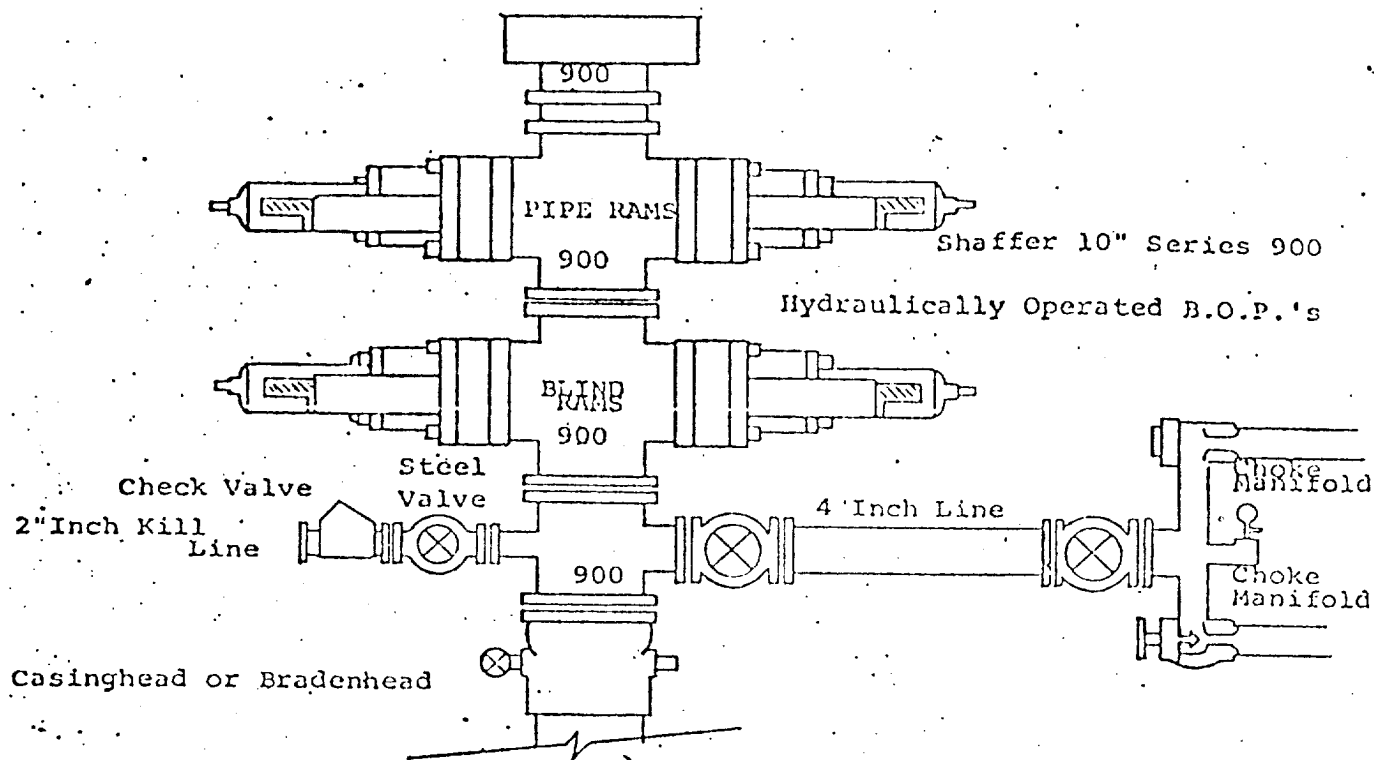
I hereby certify that the well location shown on this plat was plotted from field notes of actual surveys made by me or under my supervision, and that the same is true and correct to the best of my knowledge and belief.

Date Surveyed  
**FEBRUARY 5, 1981**

Registered Professional Engineer  
and/or Land Surveyor

*Gerardo Rodriguez*  
Certificate No. **3640**

0 320 640 960 1280 1600 1920 2240 2560 2880 3200 3520 3840 4160 4480 4800 5120 5440 5760 6080 6400



THE FOLLOWING CONSTITUTE MINIMUM BLOWOUT PREVENTER REQUIREMENTS

1. All preventers to be hydraulically operated with secondary manual controls installed prior to drilling out from under casing.
2. Choke outlet to be a minimum of 4" diameter.
3. Kill line to be of all steel construction of 2" minimum diameter.
4. All connections from operating manifolds to preventers to be all steel. hole or tube a minimum of one inch in diameter.
5. The available closing pressure shall be at least 15% in excess of that required with sufficient volume to operate the B.O.P.'s.
6. All connections to and from preventer to have a pressure rating equivalent to that of the B.O.P.'s.
7. Inside blowout preventer to be available on rig floor.
8. Operating controls located a safe distance from the rig floor.
9. Hole must be kept filled on trips below intermediate casing. Operator not responsible for blowouts resulting from not keeping hole full.
10. D. P. float must be installed and used below zone of first gas intrusion.