

All distances must be from the outer boundaries of the Section.

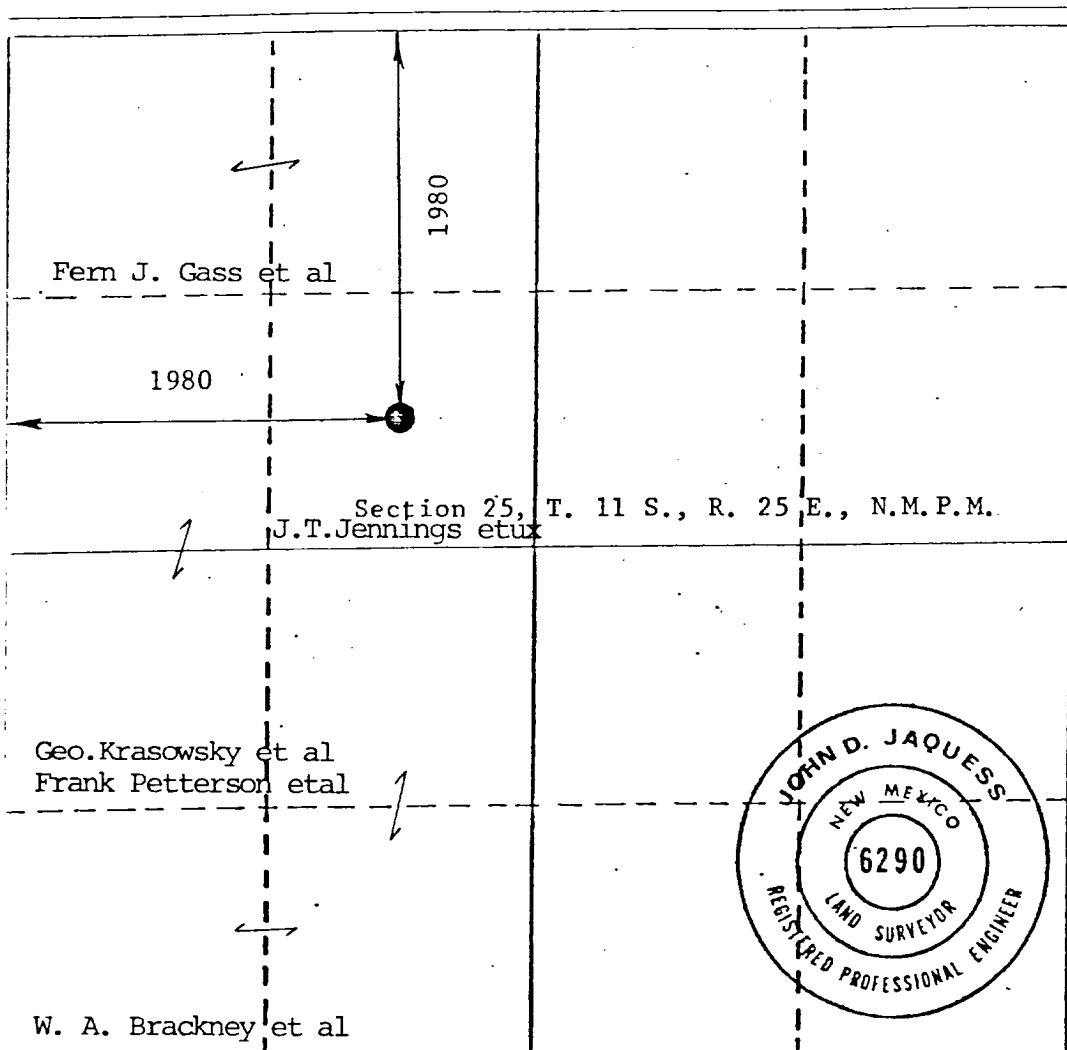
Operator Threshold Development Co.			Lease J. T. Jennings et ux		Well No. 1
Unit Letter F	Section 25	Township 11 South	Range 25 East	County Chaves	
Actual Postage Location of Well:					
1980	feet from the	North	line and	1980	feet from the West line
Ground Level Elev. 3443	Producing Formation Ellenburger		Pool Union Ellenburger Wildcat		Dedicated Acreage: 40 Acres

1. Outline the acreage dedicated to the subject well by colored pencil or hatchure marks on the plat below.
2. If more than one lease is dedicated to the well, outline each and identify the ownership thereof (both as to working interest and royalty).
3. If more than one lease of different ownership is dedicated to the well, have the interests of all owners been consolidated by communization, unitization, force-pooling, etc?

☐ Yes ☐ No If answer is "yes," type of consolidation N/A

If answer is "no," list the owners and tract descriptions which have actually been consolidated. (Use reverse side of this form if necessary.)

No allowable will be assigned to the well until all interests have been consolidated (by communization, unitization, forced-pooling, or otherwise) or until a non-standard unit, eliminating such interests, has been approved by the Division.



CERTIFICATION

I hereby certify that the information contained herein is true and complete to the best of my knowledge and belief.

Name David H. Pace
Position Exploration Manager
Company Threshold Development Company
Date February 11, 1981

I hereby certify that the well location shown on this plat was plotted from field notes of actual surveys made by me or under my supervision, and that the same is true and correct to the best of my knowledge and belief.

Date Surveyed January 21, 1981
Registered Professional Engineer and/or Land Surveyor John D. Jaquess
John D. Jaquess, P.E. & L.S.
Certificate No. 6290

