



## OIL CONSERVATION DIVISION

STATE OF NEW MEXICO  
ENERGY AND MINERALS DEPARTMENTP. O. BOX 2088  
SANTA FE, NEW MEXICO 87501Form C-102  
Revised 10-1-78

All distances must be from the outer boundaries of the Section.

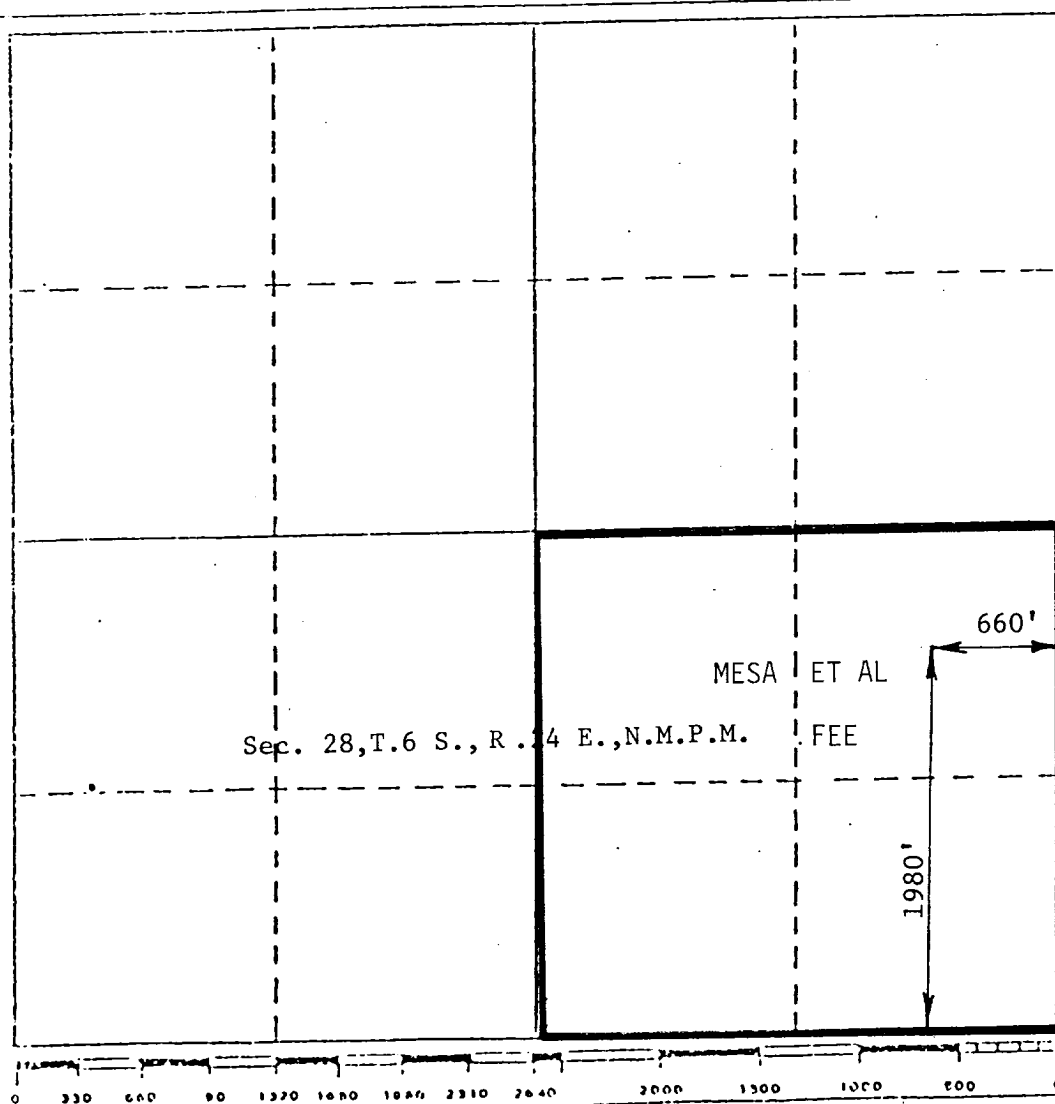
Operator Mesa Petroleum Co.		Lease Hinkle		Well No. 1
Unit Letter I	Section 28	Township 6 South	Range 24 East	County Chaves
Actual Footage Location of Well: 1980 feet from the South line and 660 feet from the East line				
Ground Level Elev. 3879	Producing Formation ABO	Pool UNDESIGNATED	Dedicated Acreage: SE/4 160 Acres	

1. Outline the acreage dedicated to the subject well by colored pencil or hachure marks on the plat below.
2. If more than one lease is dedicated to the well, outline each and identify the ownership thereof (both as to working interest and royalty).
3. If more than one lease of different ownership is dedicated to the well, have the interests of all owners been consolidated by communitization, unitization, force-pooling, etc?

☐ Yes ☐ No If answer is "yes," type of consolidation \_\_\_\_\_

If answer is "no," list the owners and tract descriptions which have actually been consolidated. (Use reverse side of this form if necessary.) \_\_\_\_\_

No allowable will be assigned to the well until all interests have been consolidated (by communitization, unitization, forced-pooling, or otherwise) or until a non-standard unit, eliminating such interests, has been approved by the Division.



## CERTIFICATION

I hereby certify that the information contained herein is true and complete to the best of my knowledge and belief.

*R. E. Mathis*

Name

R. E. MATHIS

Position

REGULATORY COORDINATOR

Company

MESA PETROLEUM CO.

Date

MARCH 8, 1982

I hereby certify that the well location shown on this plat was plotted from field notes of actual surveys made by me or under my supervision, and that the same is true and correct to the best of my knowledge and belief.

*JOHN D. JAQUES*

Date Surveyed

NEW MEXICO

8-4-82

6290

Registered Professional Engineer  
and/or Geologist

*John D. Jaques*  
JOHN D. JAQUES, P.E. & L.S.  
PROFESSIONAL ENGINEER

Certificate No.

6290