

NO. OF COPIES RECEIVED	
DISTRIBUTION	
ANTA FE	1
ILE	1 ✓
.S.G.S.	2
AND OFFICE	
PERATOR	1

NEW MEXICO OIL CONSERVATION COMMISSION

RECEIVED

30-005-60825

Form C-101  
Revised 1-1-65

FEB 25 1981

O. C. D.  
ARTESIA, OFFICE

5A. Indicate Type of Lease  
STATE ☐ FEE ☒

5. State Oil &amp; Gas Lease No.

7. Unit Agreement Name

8. Farm or Lease Name

Acme

9. Well No.

3

10. Field and Pool, or Wildcat

Wildcat Abo

12. County

Chaves

19. Proposed Depth

5000'

19A. Formation

Abo

20. Rotary or C.T.

Rotary

Elevations (Show whether DF, RT, etc.)

3682.2' GR

21A. Kind &amp; Status Plug. Bond

Blanket

21B. Drilling Contractor

Tom Brown

22. Approx. Date Work will start

June 9, 1981

## PROPOSED CASING AND CEMENT PROGRAM

SIZE OF HOLE	SIZE OF CASING	WEIGHT PER FOOT	SETTING DEPTH	SACKS OF CEMENT	EST. TOP
17 1/2"	13 3/8"	48#	800	500	Surface
11"	8 5/8"	24#	2000	600	Sufficient To
7 7/8"	4 1/2"	10.5#	5000	500	Cover All Pay

Propose to drill 17 1/2" hole to 800' using air. Will set 13 3/8" surface casing and cement to surface. Will reduce hole to 11" and drill to 2000' to set 8 5/8" intermediate casing. Will nipple up ram type BOPs and reduce hole to 7 7/8" and drill to total depth with air, foam, or mud as required. After log evaluation, 4 1/2" casing may be run and cemented back to surface casing or with sufficient kinds and amounts to isolate and seal off any fresh water, oil, or gas zones encountered.

Gas sales are not dedicated.

XC: NMOCD (6), TLS, Cen Rcds, Acctg, Hobbs Office, MEC, MAH, Partners, File

APPROVAL FOR 180 DAYS  
PERMIT EXPIRES 9-6-81  
UNLESS DRILLING UNDERWAY

BOVE SPACE DESCRIBE PROPOSED PROGRAM: IF PROPOSAL IS TO DEEPEN OR PLUG BACK, GIVE DATA ON PRESENT PRODUCTIVE ZONE AND PROPOSED NEW PRODUCTION ZONE. GIVE BLOWOUT PREVENTER PROGRAM, IF ANY.

by certify that the information above is true and complete to the best of my knowledge and belief.

ed R. E. Mathew Title Regulatory Coordinator Date 2/25/81

(This space for State Use)

ROVED BY W. A. Gressett TITLE SUPERVISOR, DISTRICT II DATE MAR 06 1981

DITIONS OF APPROVAL, IF ANY:

**MEXICO OIL CONSERVATION COMMISSION  
WELL LOCATION AND ACREAGE DEDICATION PLAT**

Form C-102  
Supersedes C-128  
Effective 1-1-65

All distances must be from the outer boundaries of the Section.

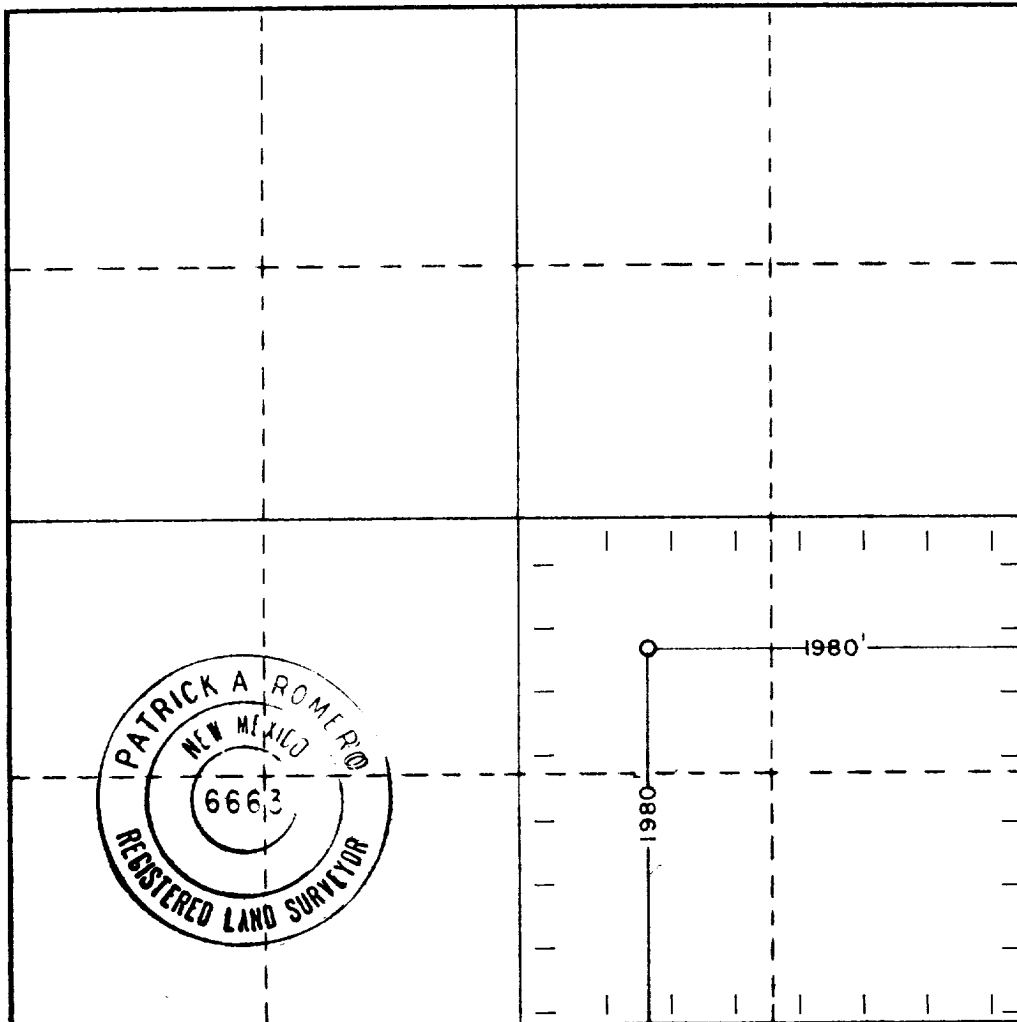
Operator <b>Mesa Petroleum Co.</b>			Lease <b>Acme</b>		Well No. <b>3</b>
Unit Letter <b>J</b>	Section <b>30</b>	Township <b>8 South</b>	Range <b>26 East</b>	County <b>Chaves</b>	
Actual Footage Location of Well: <b>1980</b> feet from the <b>South</b> line and <b>1980</b> feet from the <b>East</b> line					
Ground Level Elev. <b>3682.2</b>	Producing Formation <b>ABO</b>	Pool <i>Unad</i> <b>WILCOAT</b> <i>Alto</i>		Dedicated Acreage: <b>SE/4 160</b> Acres	

1. Outline the acreage dedicated to the subject well by colored pencil or hachure marks on the plat below.
2. If more than one lease is dedicated to the well, outline each and identify the ownership thereof (both as to working interest and royalty).
3. If more than one lease of different ownership is dedicated to the well, have the interests of all owners been consolidated by communitization, unitization, force-pooling, etc?

☐ Yes   ☐ No   If answer is "yes," type of consolidation \_\_\_\_\_

If answer is "no," list the owners and tract descriptions which have actually been consolidated. (Use reverse side of this form if necessary.) \_\_\_\_\_

No allowable will be assigned to the well until all interests have been consolidated (by communitization, unitization, forced-pooling, or otherwise) or until a non-standard unit, eliminating such interests, has been approved by the Commission.



**CERTIFICATION**

I hereby certify that the information contained herein is true and complete to the best of my knowledge and belief.

*R. E. Mathis*

Name

**R. E. MATHIS**

Position

**REGULATORY COORDINATOR**

Company

**MESA PETROLEUM CO.**

Date

**FEBRUARY 25, 1981**

I hereby certify that the well location shown on this plat was plotted from field notes of actual surveys made by me or under my supervision, and that the same is true and correct to the best of my knowledge and belief.

Date Surveyed

**2-19-81**

Registered Professional Engineer and/or Land Surveyor

*Patrick A. Romero*

Certificate No. **JOHN W. WEST 676**  
**PATRICK A. ROMERO 6663**  
**Ronald J. Eidson 3239**