

**NEW MEXICO OIL CONSERVATION COMMISSION
WELL LOCATION AND ACREAGE DEDICATION PLAT**

Form C-102
Supersedes C-128
Effective 1-1-65

All distances must be from the outer boundaries of the Section

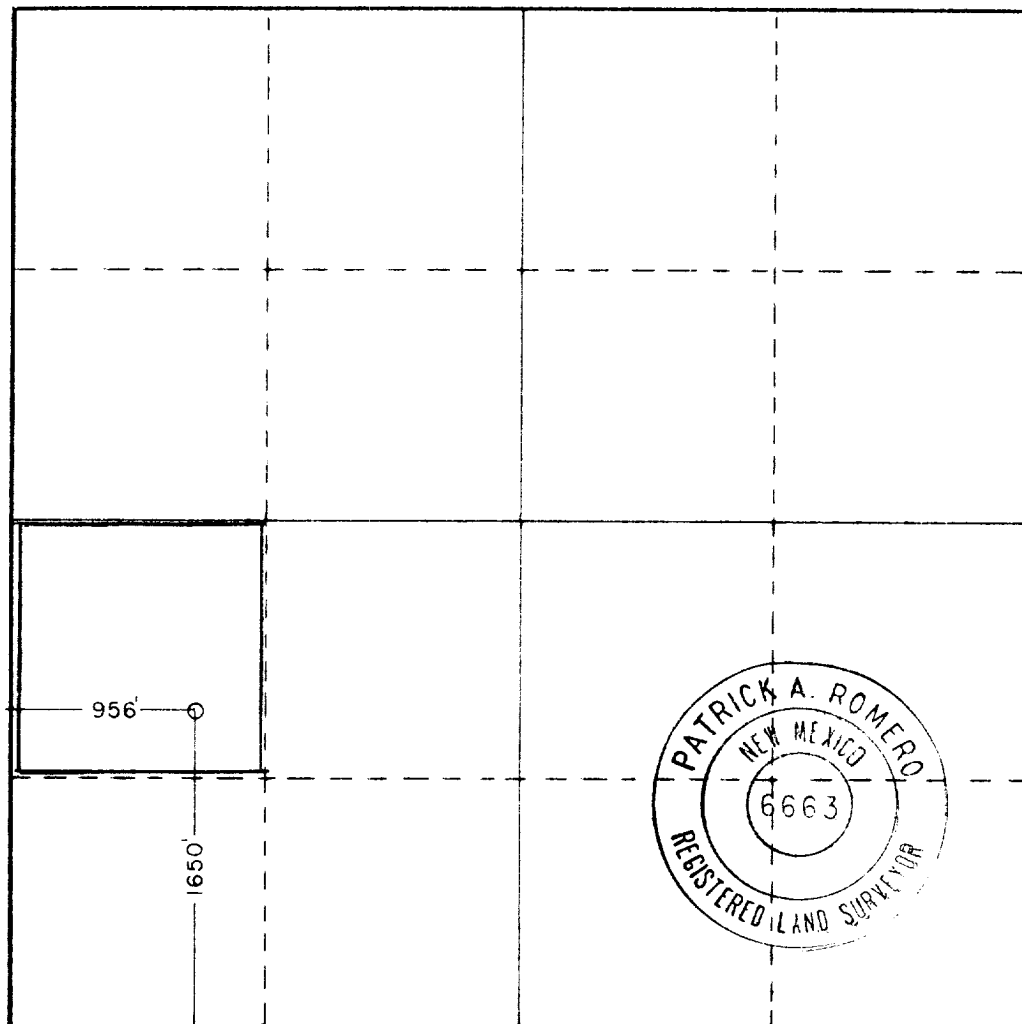
Operator The Harlow Corp.			Lease O'Brien Fee 18		Well No. 4
Unit Letter L	Section 18	Township 8South	Range 29East	County Chaves	
Actual Footage Location of Well: <div style="display: flex; justify-content: space-between;"> 1650 feet from the South line and 956 feet from the West line </div>					
Ground Level Elev. 4033	Producing Formation San Andres		Pool Ind	Dedicated Acreage: 38.81 Acres	
Twin Lakes - San Andres Assoc.					

1. Outline the acreage dedicated to the subject well by colored pencil or hachure marks on the plat below.
2. If more than one lease is dedicated to the well, outline each and identify the ownership thereof (both as to working interest and royalty).
3. If more than one lease of different ownership is dedicated to the well, have the interests of all owners been consolidated by communitization, unitization, force-pooling, etc?

☒ Yes ☐ No If answer is "yes," type of consolidation _____ Farmout _____

If answer is "no," list the owners and tract descriptions which have actually been consolidated. (Use reverse side of this form if necessary.) _____

No allowable will be assigned to the well until all interests have been consolidated (by communitization, unitization, forced-pooling, or otherwise) or until a non-standard unit, eliminating such interests, has been approved by the Commission.



CERTIFICATION

I hereby certify that the information contained herein is true and complete to the best of my knowledge and belief.

W.B. LaFon
Name

W.B. LaFon

Position

Production Engineer

Company

The Harlow Corp.

Date

3/5/81

I hereby certify that the well location shown on this plat was plotted from field notes of actual surveys made by me or under my supervision, and that the same is true and correct to the best of my knowledge and belief.

Date Surveyed

Mar. 3, 1981

Registered Professional Engineer
and/or Land Surveyor

Patrick A. Romero

Certificate No. **JOHN W. WEST 676**
PATRICK A. ROMERO 6663
Ronald J. Eidson 3239

0 330 660 990 1320 1650 1980 2310 2640 2970 3300 3630 3960 4290 4620 4950 5280 5610 5940 6270 6600