

MAR - 1 1982

O. C. D.
ARTESIA, OFFICE

2

Cibola Energy Corp
~~COPIED TO BUREAU~~

Unit Letter: J Section: 34

Actual Footage Location of Well:
1980 feet from the SOUTH line and 2100 feet to East

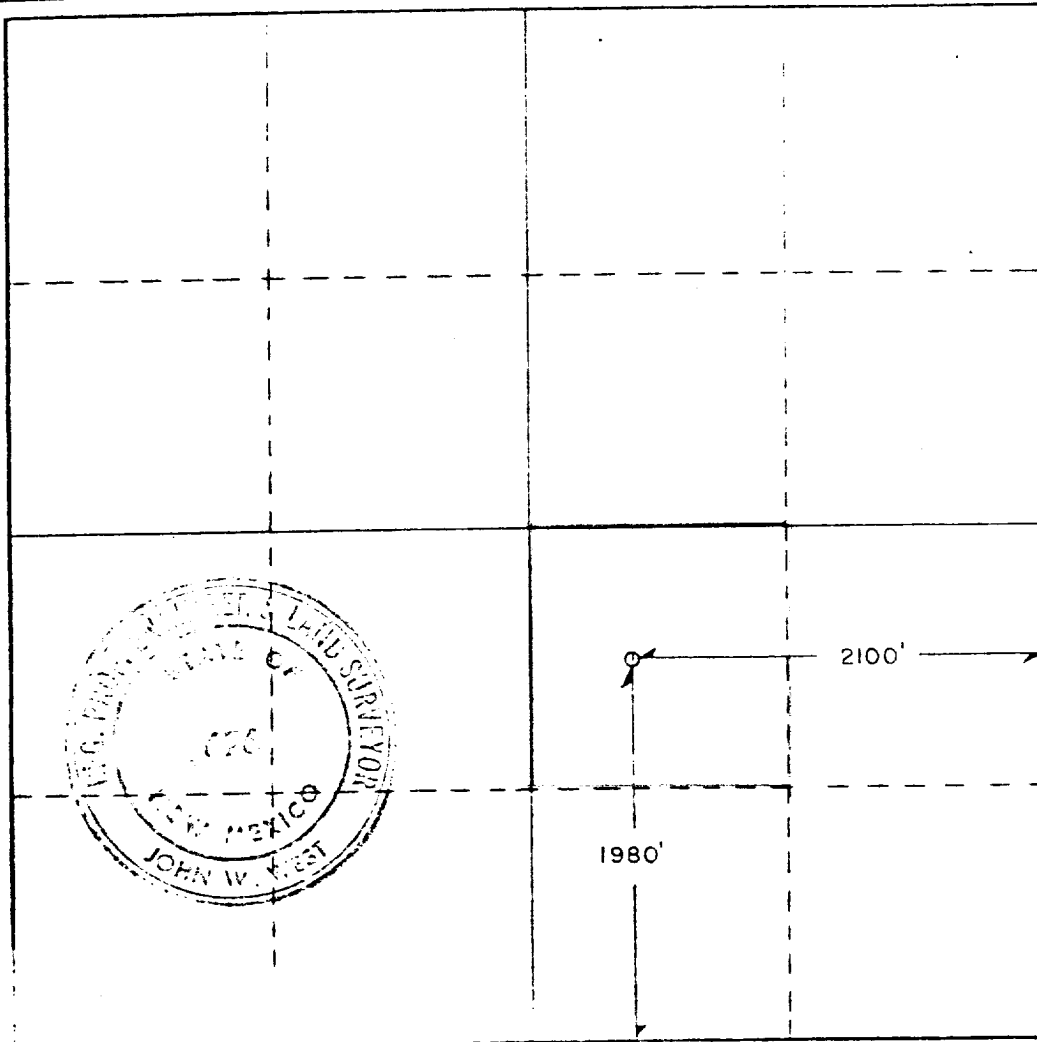
Ground Level Elev. 3775.8 Producing Formation Penrose Pool Wildcat - *Wind Queen* 40

- 1 Outline the acreage dedicated to the subject well by colored pencil or hatchure marks on the plat below.
- 2 If more than one lease is dedicated to the well, outline each and identify the ownership thereof (both as to working interest and royalty).
- 3 If more than one lease of different ownership is dedicated to the well, have the interests of all owners been consolidated by communitization, unitization, force-pooling, etc?

☐ Yes ☒ No If answer is "yes" type of consolidation _____

If answer is "no," list the owners and tract descriptions which have actually been consolidated. (Use reverse side of this form if necessary.) All leases held by operator and participating parties

No allowable will be assigned to the well until all interests have been consolidated (by communitization, unitization, forced-pooling, or otherwise) or until a non-standard unit, eliminating such interests, has been approved by the Commission.



CERTIFICATION

I hereby certify that the information contained herein is true and complete to the best of my knowledge and belief.

Anita Vigil

Anita Vigil

Drilling Secretary

Cibola Energy Corporation

Date
2-25-82

I hereby certify that the well location shown on this plat was plotted from field notes of actual surveys made by me or under my supervision, and that the same is true and correct to the best of my knowledge and belief.

Date Surveyed
3/13/81

Registered Professional Engineer and/or Land Surveyor

John W. West

Certificate No. JOHN W. WEST 676
PATRICK A. ROMERO 6862
Ronald J. Eidson 3239