

WE LOCATION AND ACREAGE DEDICATION PLAT

Superintendent
Effective 1-1-85

All distances must be from the outer boundaries of the Section.

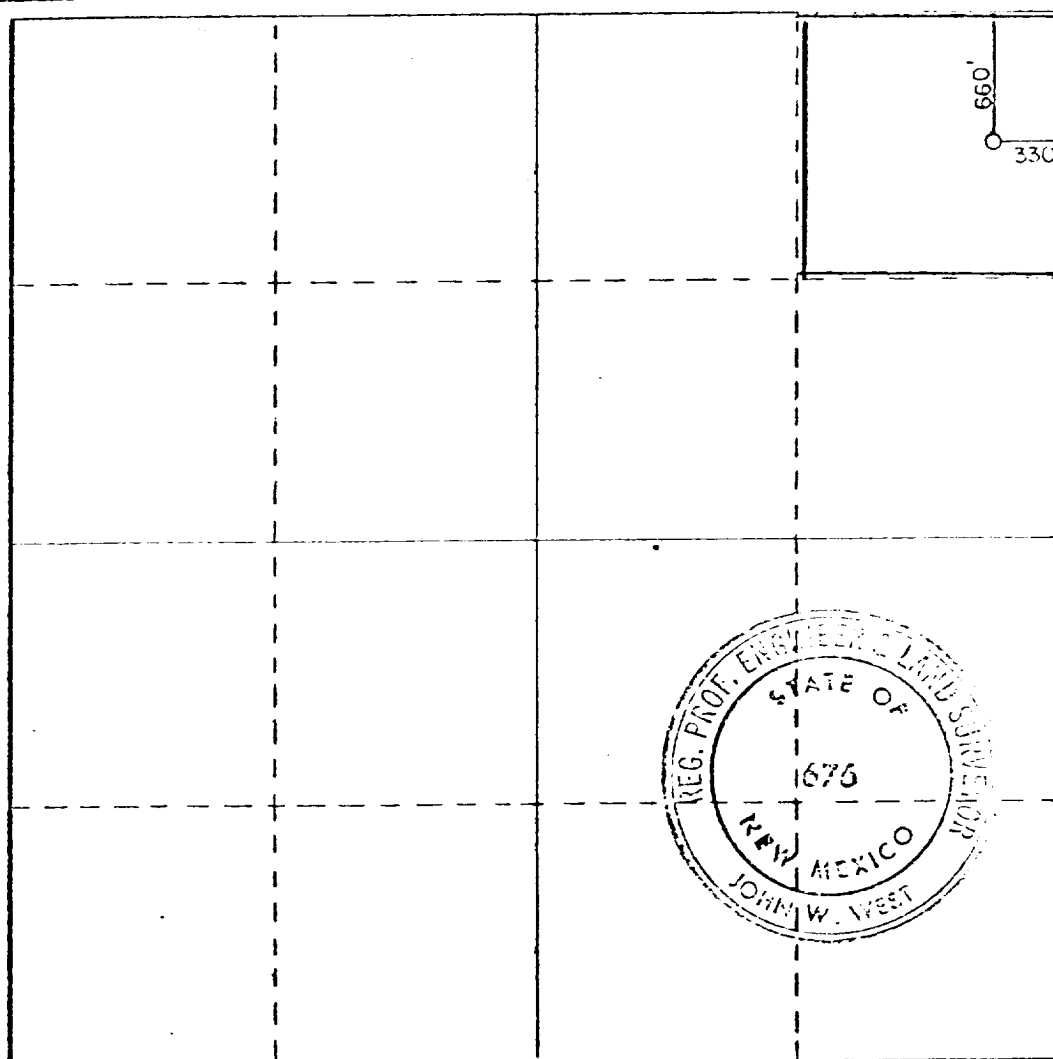
Owner The Harlow Corp.			Lease O'Brien Fee 24		Well No. 2
Unit Letter A	Section 24	Township 8 South	Range 28 East	County Chaves	
Actual Footage Location of Well: 660 feet from the North line and 330 feet from the East line					
Ground Level Elev. 4005.7	Producing Formation San Andres		Pool Und. San Andres Assoc.	Dedicated Acreage: 40 Acres	

1. Outline the acreage dedicated to the subject well by colored pencil or hatchure marks on the plat below.
2. If more than one lease is dedicated to the well, outline each and identify the ownership thereof (both as to working interest and royalty).
3. If more than one lease of different ownership is dedicated to the well, have the interests of all owners been consolidated by communitization, unitization, force-pooling, etc?

☐ Yes ☐ No If answer is "yes," type of consolidation One lease

If answer is "no," list the owners and tract descriptions which have actually been consolidated. (Use reverse side of this form if necessary.) _____

No allowable will be assigned to the well until all interests have been consolidated (by communitization, unitization, forced-pooling, or otherwise) or until a non-standard unit, eliminating such interests, has been approved by the Commission.



CERTIFICATION

I hereby certify that the information contained herein is true and complete to the best of my knowledge and belief.

Name

W.B. LaFon

Position

Production Engineer

Company

The Harlow Corp.

Date

3/19/81

I hereby certify that the well location shown on this plat was plotted from field notes of actual surveys made by me or under my supervision, and that the same is true and correct to the best of my knowledge and belief.

Date Surveyed

3-16-81

Registered Professional Engineer
and/or Land Surveyor

Certificate No.

JOHN W. WEST

678

PATRICK A. ROMERO

6868

Ronald J. Eickson

3239

0 330 660 990 1320 1650 1980 2310 2640 2970 3300 3630 3960 4290 4620 4950 5280 5610 5940 6270 6600