

NO. OF COPIES RECEIVED	
DISTRIBUTION	
SANTA FE	1
FILE	1
U.S.G.S.	
LAND OFFICE	
OPERATOR	1

NEW MEXICO OIL CONSERVATION COMMISSION

30-005-60925

Form C-103  
Supersedes Old  
C-102 and C-103  
Effective 1-1-65

5a. Indicate Type of Lease
State <input checked="" type="checkbox"/> Fee <input type="checkbox"/>
5. State Oil & Gas Lease No.
L-5347

**SUNDRY NOTICES AND REPORTS ON WELLS** **RECEIVED**

DO NOT USE THIS FORM FOR APPLICATIONS TO DRILL OR TO RE-DRILL OR TO A DIFFERENT WELL FROM THE ONE FOR WHICH THIS FORM WAS DESIGNED. (SEE APPLICATION FOR PERMIT TO DRILL OR TO RE-DRILL FOR SUCH PROPOSALS.)

1. OIL WELL <input type="checkbox"/> GAS WELL <input checked="" type="checkbox"/> OTHER <input type="checkbox"/>	FEB 23 1982
2. Name of Operator	O. C. D.
3. Address of Operator	ARTESIA, OFFICE
P.O. Box 447, Roswell, New Mexico 88201	
4. Location of Well	
UNIT LETTER <u>M</u> <u>660</u> FEET FROM THE <u>South</u> LINE AND <u>660</u> FEET FROM THE <u>West</u> LINE, SECTION <u>34</u> TOWNSHIP <u>8-S</u> RANGE <u>27-E</u> N.M.P.M.	
15. Elevation (Show whether DF, RT, GR, etc.)	
3871' GR 3882' KB	

7. Unit Agreement Name
Campbell Station Unit
8. Form or Lease Name
Campbell Station Unit
9. Well No.
1
10. Field and Pool, or Wildcat
Wildcat
12. County
Chaves

16. Check Appropriate Box To Indicate Nature of Notice, Report or Other Data

NOTICE OF INTENTION TO:	SUBSEQUENT REPORT OF:
PERFORM REMEDIAL WORK <input type="checkbox"/>	REMEDIAL WORK <input type="checkbox"/>
TEMPORARILY ABANDON <input type="checkbox"/>	COMMENCE DRILLING OPNS. <input type="checkbox"/>
PULL OR ALTER CASING <input type="checkbox"/>	CASING TEST AND CEMENT JOBS <input type="checkbox"/>
OTHER <input type="checkbox"/>	OTHER <u>Rig Up Dual Completion Equipment</u> <input checked="" type="checkbox"/>
PLUG AND ABANDON <input type="checkbox"/>	ALTERING CASING <input type="checkbox"/>
CHANGE PLANS <input type="checkbox"/>	PLUG AND ABANDONMENT <input type="checkbox"/>

17. Describe Proposed or Completed Operations (Clearly state all pertinent details, and give pertinent dates, including estimated date of starting any proposed work) SEE RULE 1103.

1/26/82 Move in and rig up Superior Well Service completion unit and Star Tool Co., reverse pump. Shut in tubing pressure 1100 PSI. Blow well down, pump 2% KCL water down annulus to displace gas and kill well. Pick up more tubing and run on in hole, tag sand at approx 5500 ft, reverse sand off of RBP, approx 65 ft of sand, circ. hole clean. Release RBP and pull to approx 5100 ft, above Abo perfs. and secure well for the day at 3:00 P.M. Baker tool man did not have all his equipment.

1/27/82 No pressure on wellhead, load and circ. hole w/2% KCL water and wait on Baker Packers. Baker Packer's man and blast joints show up at 11:00 A.M. Trip out of hole with RBP. Rig up and run in hole with Baker, Lok - Set Packer, on and off tool, Baker Sliding sleeve (1.87 I.D.) 70 ft. of Baker blast joints and flange up wellhead, w/10,000# of tension pulled on tubing, as per diagram and talley.

1/28/82 Swab load water off of Abo perfs through sliding sleeve and up tubing as hard as possible for 10 hours, nothing but water, very little gas.

1/29/82 Shut in tubing pressure 150 PSI; backside - 200 PSI Swab load water but trying to gas a little. After approx. 6 hours of swabbing, well kicks off and starts to flow water on its own with gas increasing. Flow well on 3/4" choke until sundown to clean up.

1/30/82 Shut in tubing pressure 400 PSI and 700 PSI on annulus. Open well to pit and flare to clean up Abo through tubing, gas wet but burning. Flow tries to die, run swab. cont'd on attached Exhibit

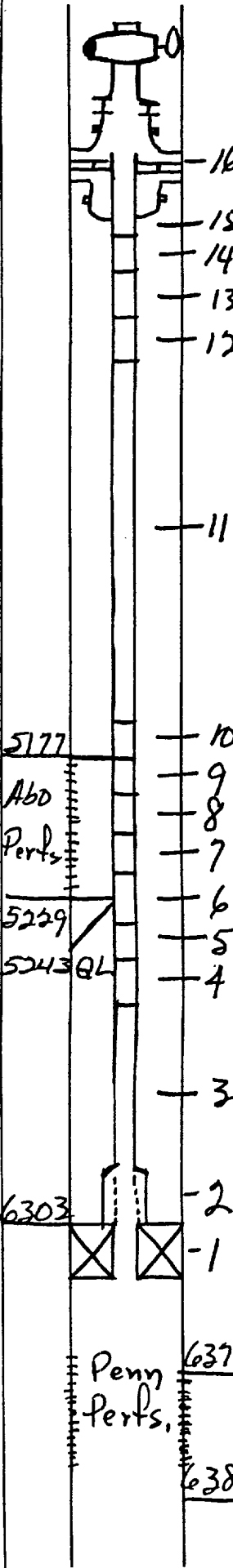
18. I hereby certify that the information above is true and complete to the best of my knowledge and belief.

SIGNED <u>Carl Schellinger</u>	TITLE <u>Operator</u>	DATE <u>2/10/82</u>
APPROVED BY <u>W.A. Gressett</u>	TITLE <u>SUPERVISOR, DISTRICT II</u>	DATE <u>FEB 23 1982</u>
CONDITIONS OF APPROVAL, IF ANY:		

Exhibit attached hereto and made a part of New Mexico Oil Conservation Commission Form C-103

- 1/30/82 After approx. 7 hours of flowing through tubing on full open choke, 3/4", well flowing w/5-10 PSI or tubing trying to dry up.  
Turn annulus to pit on 1/4 (16/64) choke for 1 hour, gas dry holding on 190 to 200 PSI - (est. 300 MCFD) Able to get 1 joint of 1 in. pipe down backside between 8 5/8 and 13 3/8. Mix 100 sks to fill hole and back in cellar.  
Secure well and shut down for day at 3:00 P.M.
- 2/1/82 Shut in tubing pressure 700 PSI, annulus pressure 200 PSI.  
Rig up and go in hole w/Jarrel Services, Inc. to close Baker sleeve, turn Abo up annulus.  
Sleeve at 5243 ft. ground level, 5253 K.B.  
Go in hole, pull Eg. pin in blanking plug.  
Go in hole, pull blanking plug in Lok-Set profile.  
Flow Penn to Pit to clean up  
Release all equipment.  
Well ready for production status.


Diagram of Dual Completion Set-up is attached Penn perfs will be produced through tubing and Abo perfs through the annulus, pursuant to OCD hearing. NOTE: C-102 is also attached to designate SW $\frac{1}{4}$  to Abo and S $\frac{1}{2}$  to Penn.



COMPANY	Carl A. Schellinger	CATALOG	LINER	UPPER TUBING	LOWER TUBING
WELL NAME & NUMBER	Campbell Station Unit 1	SIZE	5 1/2"	2 3/8	2 3/8
FIELD	wild cat	WEIGHT	17 #	4.7	4.7
COUNTY	Chaves	GRADE	J-55	J-55	J-55
STATE	New Mexico	THREAD	8rd	8rd	8rd
DATE	1-27-82	DEPTH	71-6400		6303
	<input checked="" type="checkbox"/> NEW <input type="checkbox"/> W.O.				

ITEM	DESCRIPTION	ESTIMATE
1	Baker Lok-Set 45 A4 Packer	2 ft.
2	Baker FH open off Sealing Connector 4 1/2 x 2 3/4 x 1.81 Profile	1.63 ft.
3	2 3/8-Euc 8rd Tubing, J-55	1040.40 ft.
4	2 3/8 Euc 8rd, Tubing Sub, J-55	8 ft.
5	2 3/8 Euc 8rd, Tubing Sub, J-55	6 ft.
6	Baker Sliding Sleeve (1.87 ID)	2.6 ft.
7	Baker Blast Joint (3.062 O.D. x 1.995 I.D.)	20.30 ft.
8	Baker Blast Joint (3.062 O.D. x 1.995 I.D.)	20.31 ft.
9	Baker Blast Joint (3.062 O.D. x 1.995 I.D.)	20.30 ft.
10	Baker Blast Joint (3.062 O.D. x 1.995 I.D.)	10.05 ft.
11	2 3/8-Euc 8rd Tubing, J-55	5129 ft.
12	2 3/8-Euc 8rd Tubing Sub-J-55	6 ft.
13	2 3/8 Euc 8rd Tubing Sub-J-55	4 ft.
14	2 3/8 Euc 8rd Tubing Sub-J-55	2 ft.
15	2 3/8 Euc 8rd Tubing - J-55	32.50 ft.
16	Gulf CO RSG2FC G2T Style XM Tree	
Tubing has 10,000 lbs of tension pulled in it & flanged up.		6305.09

PREPARED FOR	Carl A. Schellinger	
PREPARED BY	OFFICE	PHONE
Rudy Pittman		748-2637



6023 NAVIGATION BOULEVARD  
P.O. BOX 3048 • HOUSTON, TEXAS 77001  
TELEPHONE (713) 923-9351 • TELEX 76-2833  
A DIVISION OF BAKER OIL TOOLS GROUP, BAKER INTERNATIONAL CORPORATION