

UNITED STATES
DEPARTMENT OF THE INTERIOR
GEOLOGICAL SURVEY

APPLICATION FOR PERMIT TO DRILL, DEEPEN, OR PLUG BACK

1a. TYPE OF WORK

DRILL ☒DEEPEN ☐PLUG BACK ☐

b. TYPE OF WELL

OIL
WELL ☐GAS
WELL ☒

OTHER

SINGLE
ZONE ☐MULTIPLE
ZONE ☐

2. NAME OF OPERATOR

Mesa Petroleum Co.

3. ADDRESS OF OPERATOR

1000 Vaughn Building/ Midland, Texas 79701

4. LOCATION OF WELL (Report location clearly and in accordance with any State requirements.)*

At surface

~~1980' FNL & 2200' FWL~~

2000' N 2470' W

At proposed prod. zone

Same

14. DISTANCE IN MILES AND DIRECTION FROM NEAREST TOWN OR POST OFFICE*

26 1/2 Miles Northwest of Roswell

15. DISTANCE FROM PROPOSED*

LOCATION TO NEAREST
PROPERTY OR LEASE LINE, FT.
(Also to nearest drig. unit line, if any)

1980'

16. NO. OF ACRES IN LEASE

1600

17. NO. OF ACRES ASSIGNED
TO THIS WELL

160

18. DISTANCE FROM PROPOSED LOCATION*
TO NEAREST WELL, DRILLING, COMPLETED,
OR APPLIED FOR, ON THIS LEASE, FT.

2600'

19. PROPOSED DEPTH

3500'

20. ROTARY OR CABLE TOOLS

Rotary

21. ELEVATIONS (Show whether DF, RT, GR, etc.)

4136.6' GR

22. APPROX. DATE WORK WILL START*

May 22, 1981

23.

PROPOSED CASING AND CEMENTING PROGRAM

SIZE OF HOLE	SIZE OF CASING	WEIGHT PER FOOT	SETTING DEPTH	QUANTITY OF CEMENT
17 1/2"	13 3/8"	48#	800'	Circulate to Surface
11"	8 5/8"	24#	1600'	Sufficient to isolate water, O&G
7 7/8"	4 1/2"	10.5#	3500'	Sufficient to cover all pay

Propose to drill 17 1/2" surface hole to 800' or deeper on air to set 13 3/8" surface casing. Will cement to surface then reduce hole to 11" to drill to 1600'. Will set 8 5/8" casing if water zones have been encountered or omit if not. Will reduce hole to 7 7/8" and drill to total depth on air, foam, or mud as required. After log evaluation, 4 1/2" casing may be run and cemented with sufficient amounts and kinds to isolate and seal off any fresh water, oil, or gas zones encountered. RECEIVED

Gas Sales Are Not Dedicated.

APR 03 1981

O. C. D.

ARTESIA, OFFICE

XC: USGS (6), TLS, Cen RCDS, Acctg, Hobbs Office, MEC, Land, partners, File

IN ABOVE SPACE DESCRIBE PROPOSED PROGRAM: If proposal is to deepen or plug back, give data on present productive zone and proposed new productive zone. If proposal is to drill or deepen directionally, give pertinent data on subsurface locations and measured and true vertical depths. Give blowout preventer program, if any.

24.

SIGNED

APPROVED [Signature]

TITLE Regulatory Coordinator

DATE 2/20/81

(This space for Federal or State office use)

PERMIT NO.

APR 1 1981

APPROVAL DATE

(Orig. S&S) GEORGE H. STEWART

ACTING DISTRICT ENGINEER

APPROVED BY

JAMES A. GILLHAM
DISTRICT SUPERVISOR

TITLE

DATE

**NEW MEXICO OIL CONSERVATION COMMISSION
WELL LOCATION AND ACREAGE DEDICATION PLAT**

Form C-102
Supersedes C-128
Effective 1-1-65

All distances must be from the outer boundaries of the Section

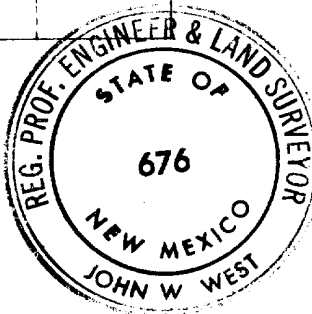
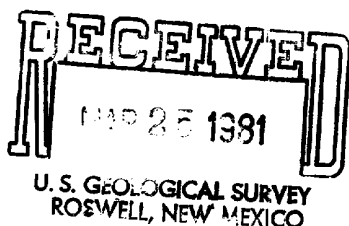
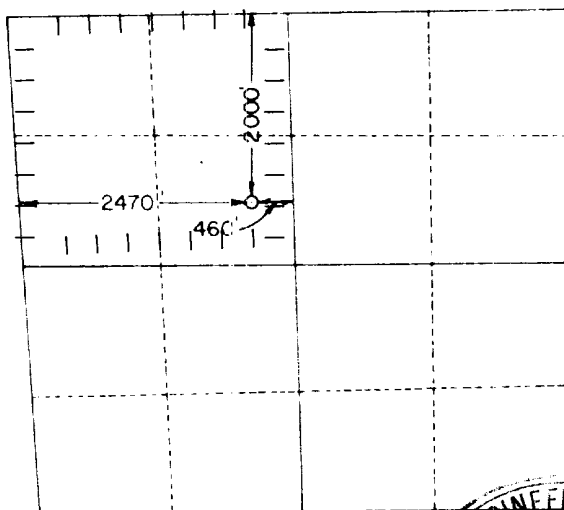
Operator Mesa Petroleum Co.			Lease Barn Fed.		Well No. 2
Tract Identifier F	Section 12	Township 8 South	Range 22 East	County Chaves	
Actual Well Location of Well: <div style="display: flex; justify-content: space-between;"> 2000 feet from the North line and 2475 feet from the West line </div>					
Ground Level Elev. 4154.0	Producing Formation ABO	Pool UNDESIGNATED		Dedicated Acreage: NW/4 178 Acres	

1. Outline the acreage dedicated to the subject well by colored pencil or hachure marks on the plat below.
2. If more than one lease is dedicated to the well, outline each and identify the ownership thereof (both as to working interest and royalty).
3. If more than one lease of different ownership is dedicated to the well, have the interests of all owners been consolidated by communitization, unitization, force-pooling, etc?

☐ Yes ☐ No If answer is "yes," type of consolidation _____

If answer is "no," list the owners and tract descriptions which have actually been consolidated. (Use reverse side of this form if necessary.) _____

No allowable will be assigned to the well until all interests have been consolidated (by communitization, unitization, forced-pooling, or otherwise) or until a non-standard unit, eliminating such interests, has been approved by the Commission.



CERTIFICATION

I hereby certify that the information contained herein is true and complete to the best of my knowledge and belief.

R. E. Mathis

Name

R. E. MATHIS

Position

REGULATORY COORDINATOR

Company

MESA PETROLEUM CO.

Date

MARCH 24, 1981

I hereby certify that the well location shown on this plat was plotted from field notes of actual surveys made by me or under my supervision, and that the same is true and correct to the best of my knowledge and belief.

Date Surveyed

March 19, 1981

Registered Professional Engineer and/or Land Surveyor

John W. West

Certificate No.	JOHN W. WEST	676
	PATRICK A. ROMERO	6668
	Ronald J. Eidson	3239



STATE OF NEW MEXICO
ENERC AND MINERALS DEPARTMENT
OIL CONSERVATION DIVISION

April 3, 1981

BRUCE KING
GOVERNOR

LARRY KEHOE
SECRETARY

POST OFFICE BOX 2088
STATE LAND OFFICE BUILDING
SANTA FE, NEW MEXICO 87501
(505) 827-2434

Mesa Petroleum Co.
Vaughn Building
Suite 1000
Midland, Texas 79701

RECEIVED

APR 06 1981

O. C. D.

ARTESIA, OFFICE

Re: Application for Non-Standard
Location: Barn Fed. Well No. 2
2000' FNL and 2478' FWL of
Sec. 12, T-8-S, R-22-E, Chaves County

We may not process the subject application for non-standard location until the required information or plats checked below (is)(are) submitted.

- ☒ A plat must be submitted clearly showing the ownership of the offsetting leases.
- ☒ A statement must be submitted that offset owners have been notified of the application by certified mail.
- ☒ A plat must be submitted fully identifying the topography necessitating the non-standard location.
- ☐ Other:

Very truly yours,

R. L. STAMETS
Technical Support Chief

RLS/dr

APPLICATION FOR DRILLING

MESA PETROLEUM CO.
BARN FEDERAL #2
1980' FNL & 2204' FWL, SEC 12, T8S, R22E
CHAVES COUNTY, NEW MEXICO

LEASE NO: NM 36652

In conjunction with Form 9-331C, Application For Permit to Drill subject well, the following additional information is provided:

1. Applicable portions of the GENERAL REQUIREMENTS FOR OIL AND GAS OPERATIONS ON FEDERAL LEASES, Roswell District, Geological Survey of September 1, 1980 will be adhered to.
2. Geolgical markers are estimated as follows:

SAN ANDRES	SURFACE
GLORIETTA	480'
YESO	650'
ABO	2740'
HUECO	3340'
3. Hydrocarbon bearing strata may occur in the Abo formation. No fresh water is expected to be encountered below 800'.
4. The Casing and Blowout Preventer Program will be determined by hole conditions as encountered. Anticipate drilling with air or foam using ram type preventer and rotating head for well control. The 13 3/8" casing will be set at approximately 800' to protect any fresh water zones and cemented to the surface. The 8 5/8" casing will be set at approximately 1600' if water zones have been encountered or omitted if not and ram type preventers installed. Sufficient amounts and kinds of cement would be used to ensure any water, gas, or oil zones encountered are isolated and shut off down to the casing point if run. The 4 1/2" production casing will be set at total depth or shallower depending upon the depth of the deepest commercial hydrocarbon bearing strata encountered.
5. No drill stem tests or coring program is planned. The logging program may consist of a GR-CNL from surface to total depth and FDC from casing point to total depth.
6. Anticipated drilling time is fifteen days with completion operations to follow as soon as a completion unit is available.

1. *Phragmites australis* (Cav.) Trin. ex Steud.

2. *Phragmites australis* (Cav.) Trin. ex Steud.

1. *Phragmites australis* (Cav.) Trin. ex Steud.

6. *Journal of Interpersonal Violence 30(1): 107-123*

Multi-Point Surface Use and Operation Plan

Page 2

5. Location and Type of Water Supply

It is planned to drill the proposed well with air. If water is needed, it will be obtained from commercial sources and will be trucked to the wellsite over the existing roads and the proposed access road shown on Exhibits I and II or piped in by temporary line from a nearby source.

6. Source of Construction Materials

Caliche for surfacing the road and the wellsite pad will be obtained by the dirt contractor from the Federal Government or private sources. Top soil from the location will be stockpiled near the location for future rehabilitation use. No surface materials will be disturbed except for those necessary for the actual grading and leveling of the drillsite and access road. Probable pit is located: SW/4, SEC 12, T8S, R22E.

7. Methods of Handling Waste Disposal

- A. Drill cuttings will be disposed of in the reserve pits.
- B. Drilling fluids will be allowed to evaporate in the reserve pits until the pits are dry.
- C. All pits will be fenced with normal fencing material to prevent livestock from entering the area.
- D. Water produced during operations will be collected in tanks until hauled to an approved disposal system, or separate disposal application will be submitted to the USGS for approval.
- E. Current laws and regulations pertaining to the disposal of human waste will be complied with.
- F. Trash, waste paper, garbage and junk will be buried in a separate trash pit and covered with a minimum of 24 inches of dirt. All waste material will be contained to prevent scattering by the wind.
- G. All trash and debris will be buried or removed from the wellsite within 30 days after finished and/or completion operations.

8. Ancillary Facilities: None required.

9. Wellsite Layout:

- A. Exhibit V shows the relative location and dimensions of the well pad, reserve pits, and major rig components. The pad and pit area has been staked and flagged.
- B. Some leveling of the wellsite will be required. See Exhibit III for additional details.
- C. The reserve pit will be plastic lined.

Multi-Point Surface Use and Operation Plan

Page 2

5. Location and Type of Water Supply

It is planned to drill the proposed well with air. If water is needed, it will be obtained from commercial sources and will be trucked to the wellsite over the existing roads and the proposed access road shown on Exhibits I and II or piped in by temporary line from a nearby source.

6. Source of Construction Materials

Caliche for surfacing the road and the wellsite pad will be obtained by the dirt contractor from the Federal Government or private sources. Top soil from the location will be stockpiled near the location for future rehabilitation use. No surface materials will be disturbed except for those necessary for the actual grading and leveling of the drillsite and access road. Probable pit is located: SW/4, SEC 12, T8S, R22E.

7. Methods of Handling Waste Disposal

- A. Drill cuttings will be disposed of in the reserve pits.
- B. Drilling fluids will be allowed to evaporate in the reserve pits until the pits are dry.
- C. All pits will be fenced with normal fencing material to prevent livestock from entering the area.
- D. Water produced during operations will be collected in tanks until hauled to an approved disposal system, or separate disposal application will be submitted to the USGS for approval.
- E. Current laws and regulations pertaining to the disposal of human waste will be complied with.
- F. Trash, waste paper, garbage and junk will be buried in a separate trash pit and covered with a minimum of 24 inches of dirt. All waste material will be contained to prevent scattering by the wind.
- G. All trash and debris will be buried or removed from the wellsite within 30 days after finished and/or completion operations.

8. Ancillary Facilities: None required.

9. Wellsite Layout:

- A. Exhibit V shows the relative location and dimensions of the well pad, reserve pits, and major rig components. The pad and pit area has been staked and flagged.
- B. Some leveling of the wellsite will be required. See Exhibit III for additional details.
- C. The reserve pit will be plastic lined.

Multi-Point Surface Use and Operation Plan

Page 3

10. Plans for Restoration of the Surface:

- A. After completion of drilling and/or completion operations all equipment and other material not needed for operations will be removed. Pits will be filled and location cleaned of all trash and junk to leave the wellsite in an aesthetically pleasing a condition as possible.
- B. Any unguarded pits containing fluids will be fenced until they are filled.
- C. If the proposed well is non-productive, all rehabilitation and/or vegetation requirements of the Bureau of Land Management and the United States Geological Survey will be complied with and will be accomplished as expeditiously as possible. All pits will be filled and leveled within 90 days after abandonment, if drying conditions permit.

11. Other Information:

- A. Topography: The land surface in the vicinity of the wellsite is gently sloping to the south.
- B. Soil: The topsoil at the wellsite is sandy loam.
- C. Flora and Fauna: The vegetative cover consists of Tabosa and other prairie grasses, creosote bush, yucca, cactus, prairie flowers and other miscellaneous desert growth. Wildlife in the area probably includes those typical of semi-arid desert land. The area is used for grazing.
- D. Ponds and Streams: None
- E. Residences and Other Structures: There are no residences or other structures in the vicinity of the proposed well.
- F. Land Use: Grazing.
- G. Surface Ownership: The wellsite is on Federal surface.
- H. There is no evidence of any major archaeological, historical, or cultural sites in the area. NMAS, Inc. has conducted an archaeological study of this site and provides this report to interested parties.

Multi-Point Surface Use and Operation Plan

Page 4

12. Operator's Representatives:

- A. The field representatives responsible for assuring compliance with the approved surface use and operations plan are as follows:

J. Wootten
P. O. Box 1756
Hobbs, New Mexico 88240
(505-393-4425) - Office
(505-393-6033) - Home

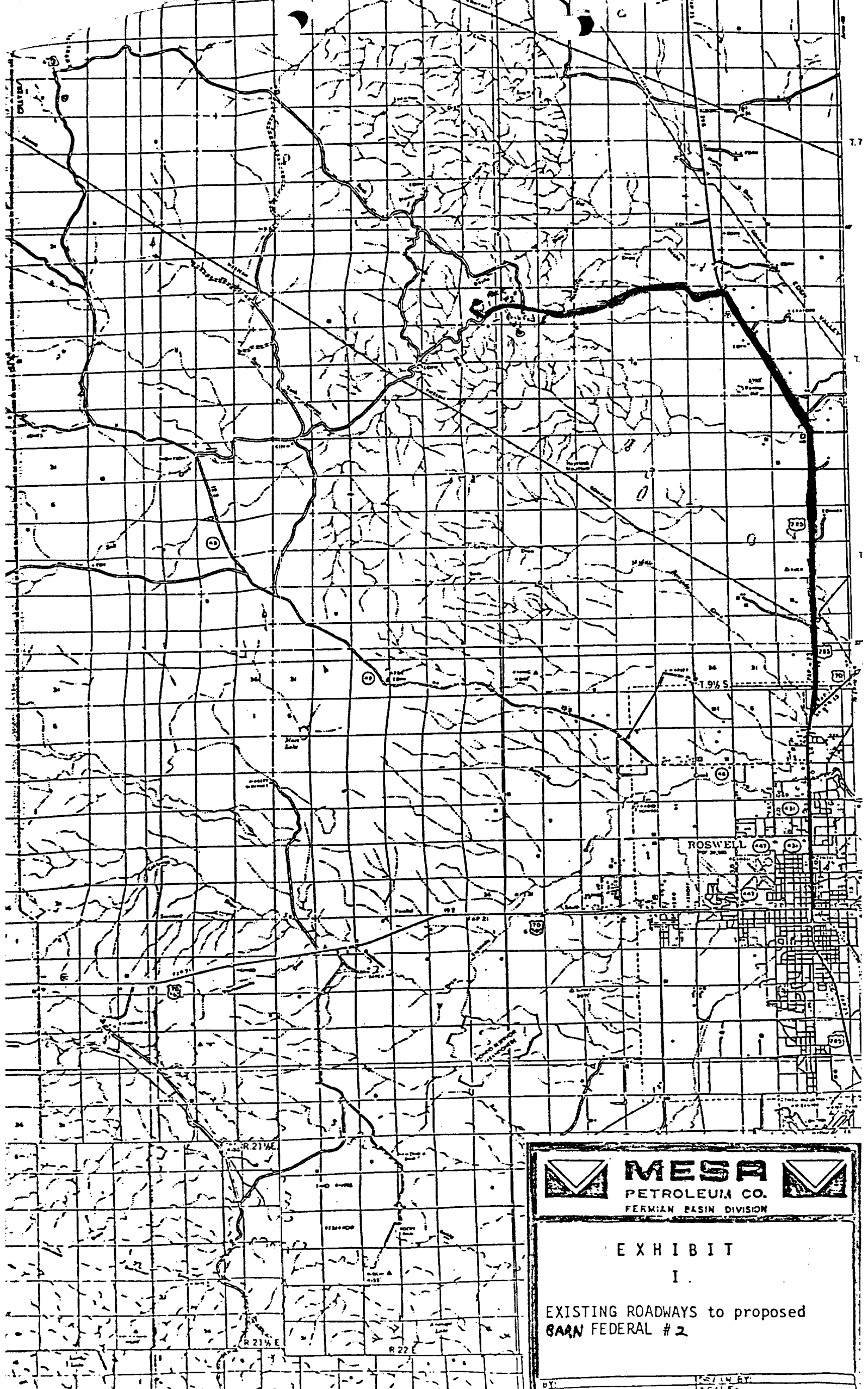
C. C. Wheeler
1000 Vaughn Building
Midland, Texas 79701
(915-683-5391) - Office
(915-683-6123) - Home

13. Certification

I hereby certify that I, or persons under my direct supervision, have inspected the proposed drillsite and access route; that I am familiar with the conditions which presently exist; that the statements made in this plan are, to the best of my knowledge true and correct; and, that the work associated with the operations proposed herein will be performed by Mesa Petroleum Co. and its contractors and subcontractors in conformity with this plan and the terms and conditions under which it is approved.

February 20, 1981
Date

Michael P. Houston
Michael P. Houston
Operations Manager



MESA
PETROLEUM CO.
PERMIAN BASIN DIVISION

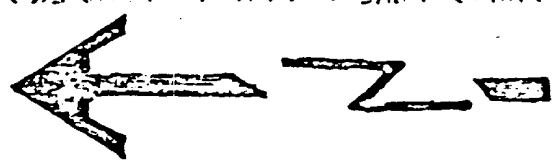
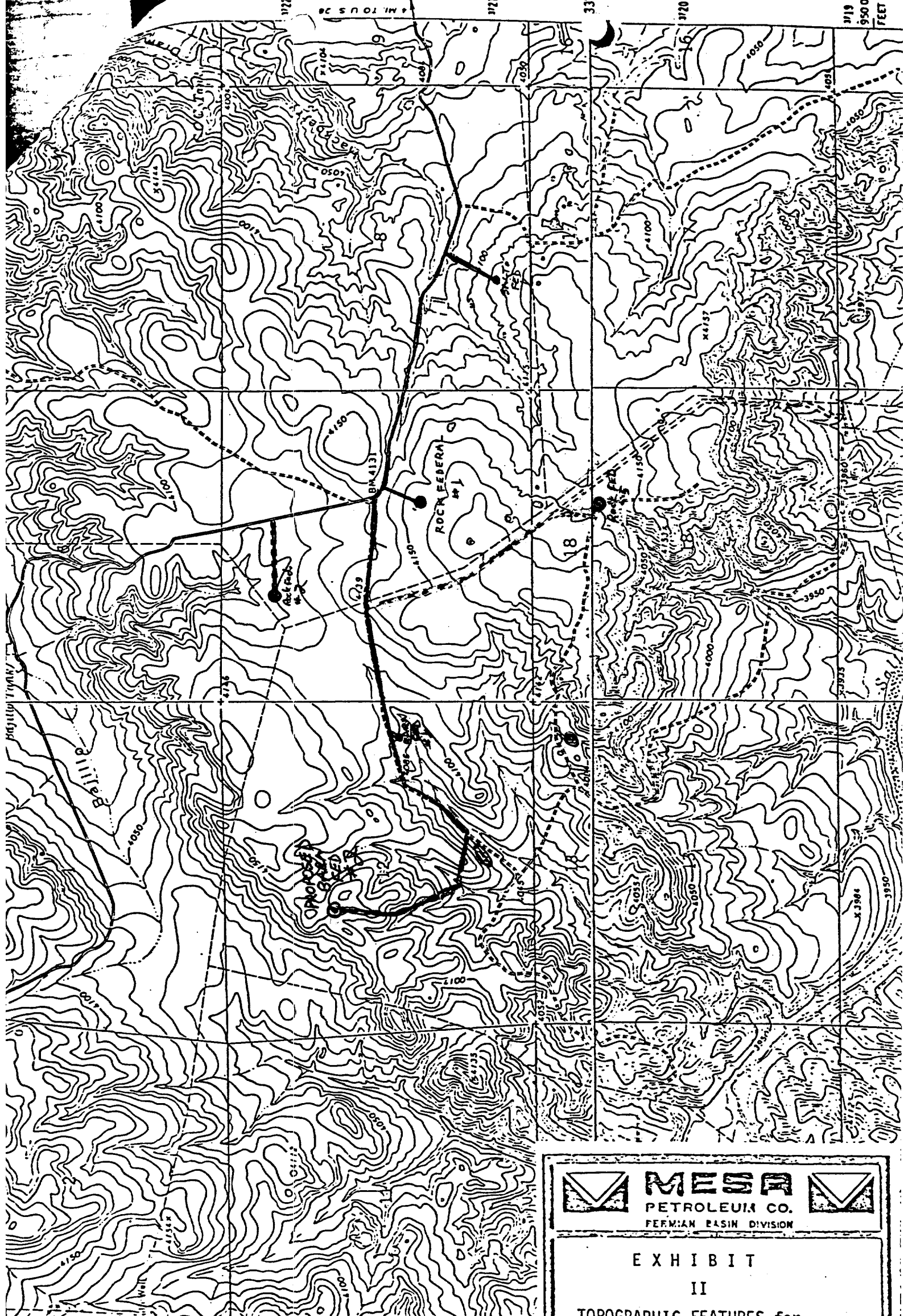




EXHIBIT
I

EXISTING ROADWAYS to proposed
BARN FEDERAL #2

BY:

SCALE:



		MESA			
PETROLEUM CO.					
FERMIAN BASIN DIVISION					
EXHIBIT II					
TOPOGRAPHIC FEATURES for proposed BARN FEDERAL # 2					
BY:		DATE:		SCALE:	