

STATE OF NEW MEXICO
ENERGY AND MINERALS DEPARTMENT

OIL CONSERVATION DIVISION

P. O. BOX 2088

SANTA FE, NEW MEXICO 87501

MAIL TO: OGD
P. O. Drawer DD
Artesia, N. M. 88210

RECEIVED

JUL 8 1981

Form C-101
Revised 10-1-78

5A. Indicate Type of Lease
STATE ☒ FEE ☐

5. State Oil & Gas Lease No.
LG 5573

7. Unit Agreement Name

8. Farm or Lease Name

Macho State

9. Well No.

10. Field and Pool, or Wildcat
Undesignated Abo

12. County

Chaves

19. Proposed Depth

4500

19A. Formation

Abo Sands

20. Rotary or C.T.

Rotary

21B. Drilling Contractor

Tex-Mex Drilling Co.

22. Approx. Date Work will start

As soon as possible

PROPOSED CASING AND CEMENT PROGRAM

SIZE OF HOLE	SIZE OF CASING	WEIGHT PER FOOT	SETTING DEPTH	SACKS OF CEMENT	EST. TOP
17 1/2	13 3/8	54.5#-48.0 K-55	900 ±	± 750 SKS	Circ
12 1/4	8 5/8	24.0# K-55	1500-2000 ±	± 950 SKS	Circ
7 7/8	4 1/2	10.5# J-55	TD	± 225 SKS	600' over top of Abo sands

13 3/8" Casing 250 sks Thixset-Class C containing 8-10#/sk Gilsonite, 1/4#/sk Celoflake, 4% Cacl₂, 400 sks Pozmix containing 4#/sk Gilsonite, 1/4#/sk Celoflake, 4% Cacl₂, and tail in with 100 sks Class C containing 1/4#/sk Celoflake, 3% Cacl₂, - Total 750 sks.

8 5/8" Casing 350 sks Thixset - Class C containing 8-10#/sk Gilsonite, 1/4#/sk Celoflake, 4% Cacl₂, 500 sks Pozmix w/same additives, and tail in w/100 sks Class C containing 5% Gypseal and 3% Cacl₂, - Total 950 sks.

4 1/2" Casing Approximately 250 sks Pozmix - Class C w/2% gel. 8#/sk salt and 0.4% CFR-2 friction reducer.

APPROVAL VALID FOR 180 DAYS

PERMIT EXPIRES 1-13-82

UNLESS DRILLING UNDERWAY

BOP program-see Exhibit A.

Well will be drilled with air.

Gas is dedicated

IN ABOVE SPACE DESCRIBE PROPOSED PROGRAM: IF PROPOSAL IS TO DEEPEN OR PLUG BACK, GIVE DATA ON PRESENT PRODUCTIVE ZONE AND PROPOSED NEW PRODUCTIVE ZONE. GIVE BLOWOUT PREVENTER PROGRAM, IF ANY.

I hereby certify that the information above is true and complete to the best of my knowledge and belief.

Signed

Title Manager, U.S. Onshore Production Date July 2, 1981

(This space for State Use)

APPROVED BY

TITLE

SUPERVISOR, DISTRICT H

DATE

JUL 13 1981

CONDITIONS OF APPROVAL, IF ANY:

All distances must be from the outer boundaries of the Section.

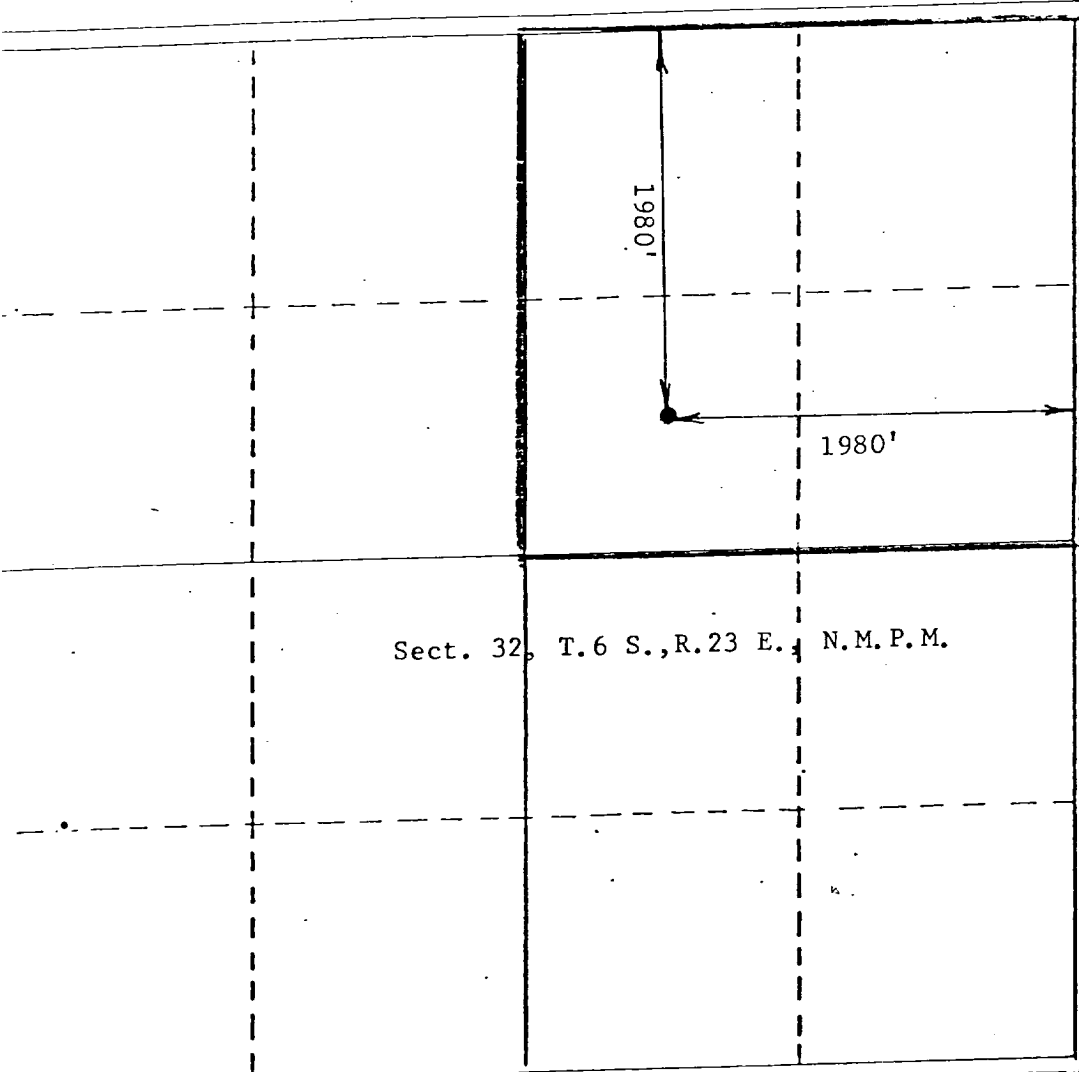
Lease		Well No.	
Transwestern Gas Supply Co.		1	
Section	Township	Range	County
32	6 South	23 East	Chaves
Macho State			
1980 feet from the North line and 1980 feet from the East line			
Sound Level Elev.	Producing Formation	Pool	Dedicated Acreage:
4063	Abo Sands	Undesignated Abo	160 Acres

1. Outline the acreage dedicated to the subject well by colored pencil or hatchure marks on the plat below.
2. If more than one lease is dedicated to the well, outline each and identify the ownership thereof (both as to working interest and royalty).
3. If more than one lease of different ownership is dedicated to the well, have the interests of all owners been consolidated by communitization, unitization, force-pooling, etc?

☐ Yes ☐ No If answer is "yes," type of consolidation _____

If answer is "no," list the owners and tract descriptions which have actually been consolidated. (Use reverse side of this form if necessary.) _____

No allowable will be assigned to the well until all interests have been consolidated (by communitization, unitization, forced-pooling, or otherwise) or until a non-standard unit, eliminating such interests, has been approved by the Division.



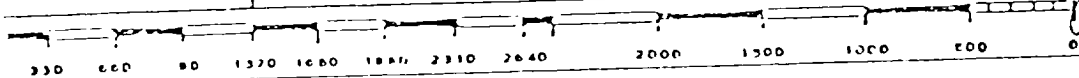
CERTIFICATION

I hereby certify that the information contained herein is true and complete to the best of my knowledge and belief.

Name John D. Jaquess
 Position Charles D. Farmer
 Mang, U.S. Onshore Prod. Engineer
 Company Transwestern Gas Supply Co.
 Date July 2, 1981

I hereby certify that the well location shown on this plat was plotted from field notes of actual surveys made by me or under my supervision, and that the same is true and correct to the best of my knowledge and belief.

Date Surveyed June 19, 1981
 Registered Professional Engineer and/or Land Surveyor
John D. Jaquess
 Certificate No. 6290



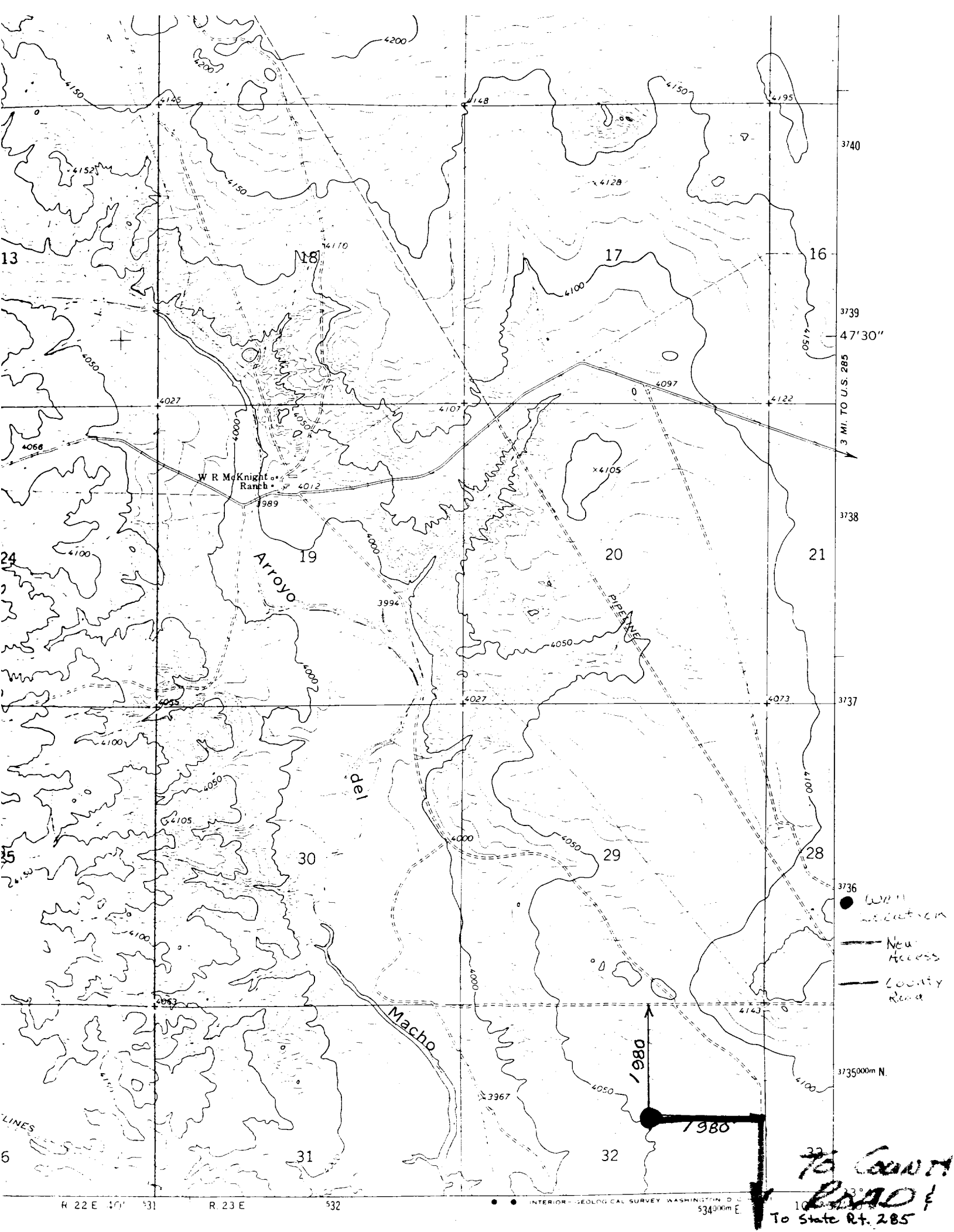
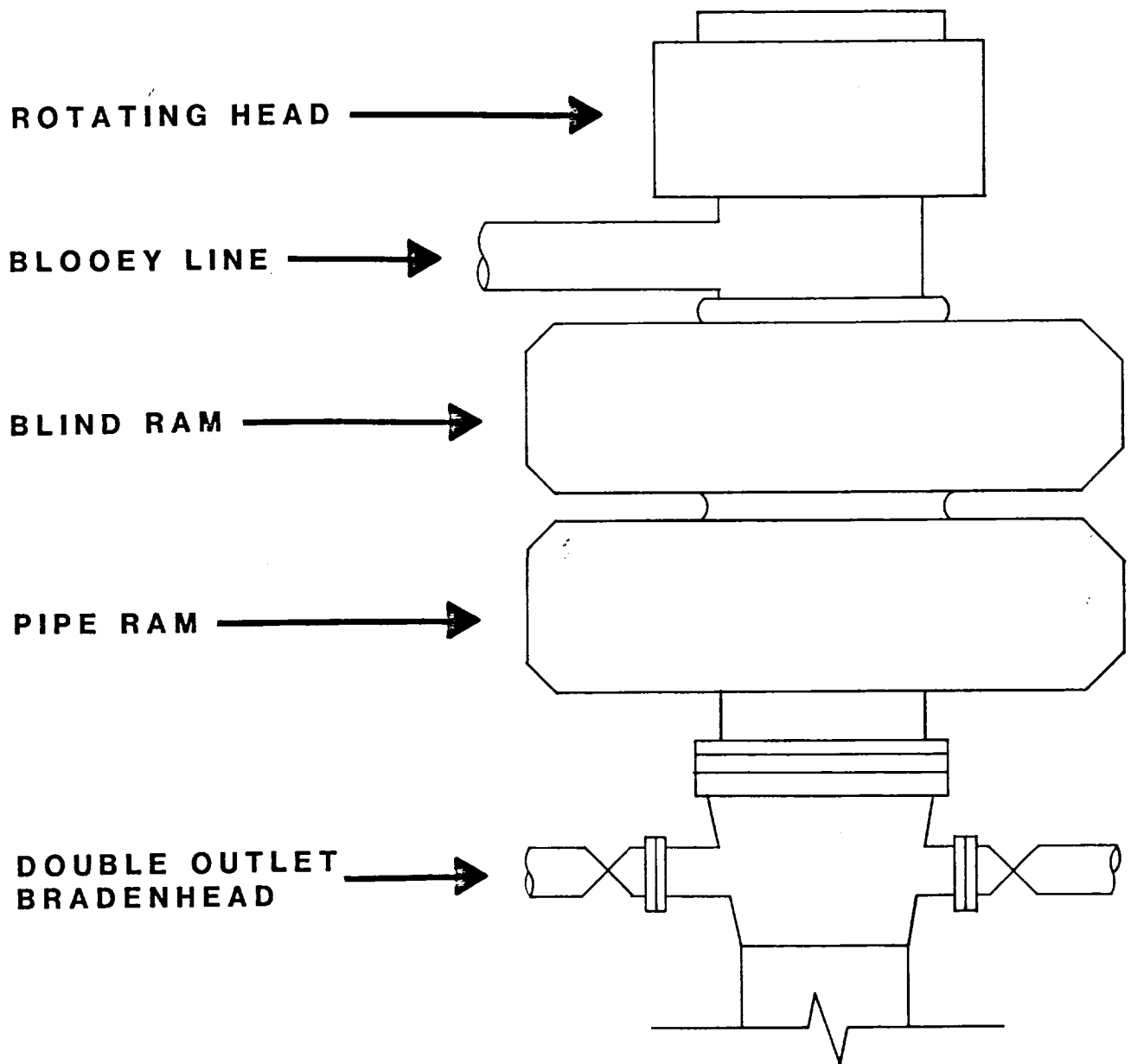


EXHIBIT "A"

B O P PROGRAM

SPACESAVER - B O P and ROTATING HEAD



TRANSWESTERN 
Gas Supply Company

A TEXAS EASTERN COMPANY

RECEIVED

JUL 4 1981

ARTESIA OFFICE

Charles D. Farmer
P.O. Box 2521
I Houston Center, Rm 3740
Houston, TX 77001

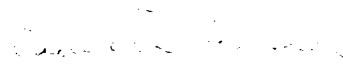
Oil Conservation Division
P.O. Drawer DD
Artesia, NM 88210

To Whom It May Concern:

This is the first of several wells we will be permitting for this immediate area of operations. I hope, since this is our first operations, that everything is in order.

Our company looks forward to working with your office and we are ready to offer the assistance that is necessary for good working relations. If there is anything we need in the way of expediting this application please call me personally or Mr. John Oeffner at (713) 759-5071 or 759-4708.

Sincerely,


Charles D. Farmer
Production Engineer

CDF:dcr
xc: J. Oeffner

*change address on C-101 as per request
from Mr. Farmer 7-10-81*