

NO. OF COPIES RECEIVED	
DISTRIBUTION	
SANTA FE	1
FILE	1
U.S.G.S.	
LAND OFFICE	
OPERATOR	

AUG 11 1981

O.C.D.
ADJUTANT OFFICE

5A. Indicate Type of Lease
STATE FEE

5. State Oil & Gas Lease No.
L-6812

7. Unit Agreement Name

8. Form or Lease Name
Pennzoil State

9. Well No.
1

10. Field and Pool, or Wildcat
Wildcat

12. County
Chaves

APPLICATION FOR PERMIT TO DRILL, DEEPEN, OR PLUG BACK

1a. Type of Work
DRILL DEEPEN PLUG BACK

b. Type of Well
OIL WELL GAS WELL OTHER

SINGLE ZONE MULTIPLE ZONE

2. Name of Operator
Ike Lovelady, Inc.

3. Address of Operator
P O Drawer 2666, Midland, Texas 79702

4. Location of Well
UNIT LETTER J LOCATED 1980' FEET FROM THE south LINE
AND 1980' FEET FROM THE east LINE OF SEC. 16 TWP. 9S REC. 26E NMPM

19. Proposed Depth
5150'

19A. Formation
Abo

20. Rotary or C.T.
rotary

11. Elevations (Show whether DF, KT, etc.)
3765' Ground Level

21A. Kind & Status Plug. Bond
Blank Bond

21B. Drilling Contractor
WEK - Roswell, N.M.

22. Approx. Date Work will start
Sept. 15, 1981

23. PROPOSED CASING AND CEMENT PROGRAM
104E5287

SIZE OF HOLE	SIZE OF CASING	WEIGHT PER FOOT	SETTING DEPTH	SACKS OF CEMENT	EST. TOP
12 1/4"	8-5/8"	24#	1500'	700	surface
7-7/8"	5 1/2"	15.5#	5150'	550	2000'

10" .009 series 3000# BOP w/pipe & blind rams

gas is not dedicated

APPROVAL VALID FOR 180 DAYS
PERMIT EXPIRES 2-18-82
UNLESS DRILLING UNDERWAY

IN ABOVE SPACE DESCRIBE PROPOSED PROGRAM; IF PROPOSAL IS TO DEEPEN OR PLUG BACK, GIVE DATA ON PRESENT PRODUCTIVE ZONE AND PROPOSED NEW PRODU-
TIVE ZONE. GIVE BLOWOUT PREVENTER PROGRAM, IF ANY.

I hereby certify that the information above is true and complete to the best of my knowledge and belief.

Signed R.L. Hammon Title Sr. Vice President Date August 7, 1981

(This space for State Use)

APPROVED BY W.A. Gressitt TITLE SUPERVISOR, DISTRICT III DATE AUG 10 1981

CONDITIONS OF APPROVAL, IF ANY:

NEW MEXICO OIL CONSERVATION COMMISSION
WELL LOCATION AND ACREAGE DEDICATION PLAT

Form C-102
Supersedes C-128
Effective 1-1-65

All distances must be from the outer boundaries of the Section

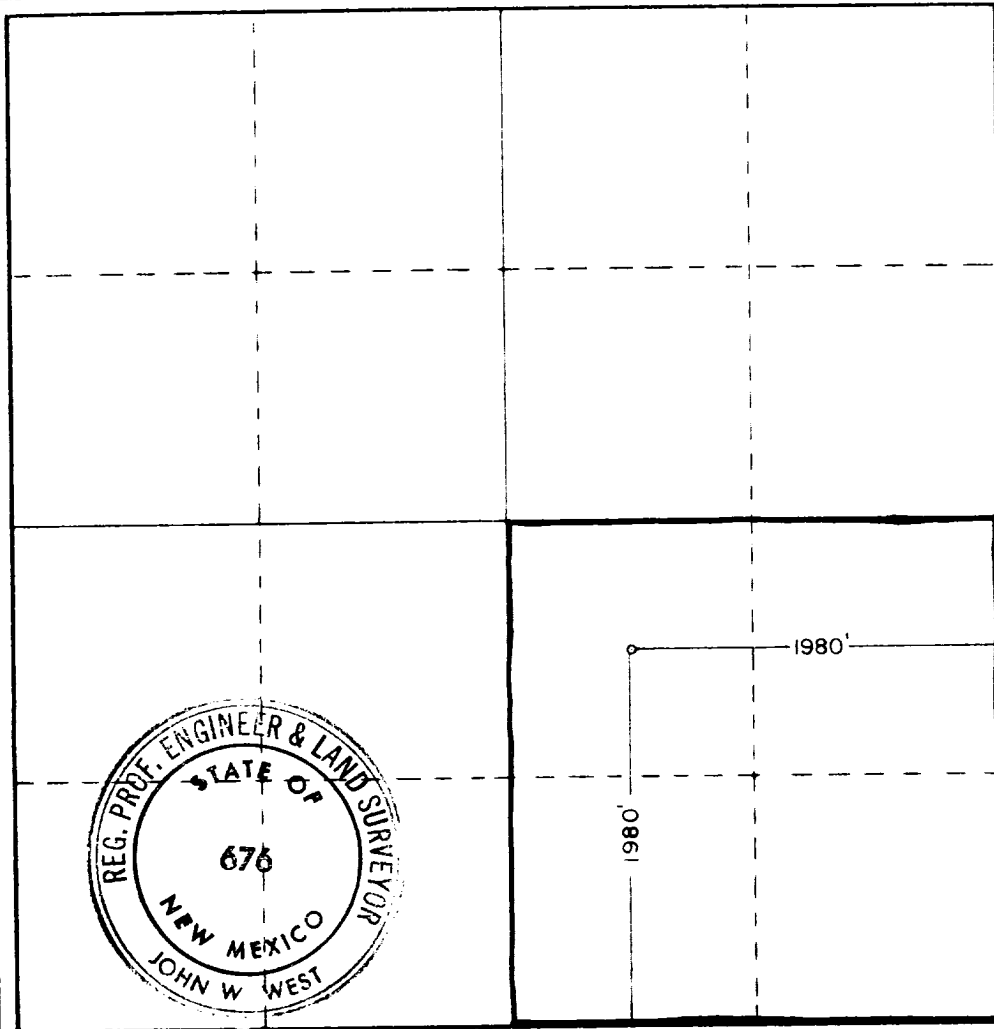
Operator IKE LOVELADY INC.		Lease PENNZOIL STATE		Well No. 1
Tract Letter J	Section 16	Township 9 SOUTH	Range 26 EAST	County CHAVES
Actual Footage Location of Well: 1980 feet from the SOUTH line and 1980 feet from the EAST line				
Ground Level Elev. 3765.0	Producing Formation Abo	Pool Wildcat	Dedicated Acreage 160	

- Outline the acreage dedicated to the subject well by colored pencil or hachure marks on the plat below.
- If more than one lease is dedicated to the well, outline each and identify the ownership thereof (both as to working interest and royalty).
- If more than one lease of different ownership is dedicated to the well, have the interests of all owners been consolidated by communitization, unitization, force-pooling, etc?

Yes No If answer is "yes," type of consolidation not applicable

If answer is "no," list the owners and tract descriptions which have actually been consolidated. (Use reverse side of this form if necessary.) _____

No allowable will be assigned to the well until all interests have been consolidated (by communitization, unitization, forced-pooling, or otherwise) or until a non-standard unit, eliminating such interests, has been approved by the Commission.



CERTIFICATION

I hereby certify that the information contained herein is true and complete to the best of my knowledge and belief

R. C. Hamm Jr.

Name
Sr. Vice President
Position
Ike Lovelady, Inc.
Company
August 7, 1981
Date

I hereby certify that the well location shown on this plat was plotted from field notes of actual surveys made by me or under my supervision, and that the same is true and correct to the best of my knowledge and belief

Date Surveyed
8-3-81
Registered Professional Engineer and/or Land Surveyor

John W. West

Certificate No **JOHN W. WEST 676**
PATRICK A. ROMERO 6865
Ronald J. Eidson 3239

