

N. D. D. COPY  
UNITED STATES  
DEPARTMENT OF THE INTERIOR  
GEOLOGICAL SURVEYSUBMIT IN TRIPLICATE\*  
(Other instructions on  
reverse side)Form approved,  
Budget Bureau No. 42-R1425.

30-005-61100

C/SF  
APPLICATION FOR PERMIT TO DRILL, DEEPEN, OR PLUG BACK

## 1a. TYPE OF WORK

DRILL ☒DEEPEN ☐PLUG BACK ☐

## b. TYPE OF WELL

OIL  
WELL ☐GAS  
WELL ☒

OTHER

SINGLE  
ZONE ☒MULTIPLE  
ZONE ☐

## 2. NAME OF OPERATOR

McClellan Oil Corporation

RECEIVED

## 3. ADDRESS OF OPERATOR

P. O. Dr. 730 Roswell, New Mexico 88201

AUG 20 1981

## 4. LOCATION OF WELL (Report location clearly and in accordance with any State requirements.)

At surface

660' FNL and 1980' FEL

At proposed prod. zone

Same

## 14. DISTANCE IN MILES AND DIRECTION FROM NEAREST TOWN OR POST OFFICE\*

20 miles northeast of Roswell, New Mexico

## 15. DISTANCE FROM PROPOSED\*

LOCATION TO NEAREST  
PROPERTY OR LEASE LINE, FT.  
(Also to nearest drlg. unit line, if any)

660'

## 16. NO. OF ACRES IN LEASE

1280

17. NO. OF ACRES ASSIGNED  
TO THIS WELL

160

## 18. DISTANCE FROM PROPOSED LOCATION\*

TO NEAREST WELL, DRILLING, COMPLETED,  
OR APPLIED FOR, ON THIS LEASE, FT.

N/A

## 19. PROPOSED DEPTH

4000'

## 20. ROTARY OR CABLE TOOLS

Rotary

## 21. ELEVATIONS (Show whether DF, RT, GR, etc.)

3650' GR

## 22. APPROX. DATE WORK WILL START\*

September 1, 1981

## 23.

## PROPOSED CASING AND CEMENTING PROGRAM

SIZE OF HOLE	SIZE OF CASING	WEIGHT PER FOOT	SETTING DEPTH	QUANTITY OF CEMENT
17 1/2"	13 3/8"	54.5#	450'	450 Sx Circulate
12 1/4"	8 5/8"	24 #	1400'	400 Sx Circulate
7 7/8"	4 1/2"	10.5#	4000'	300 Sx

Propose to drill to approximately 4000' to test the Abo formation. If production is indicated, will set casing and attempt completion.

Mud Program: Will drill with fresh water to top of Abo. Will mud-up at that point with 10 cc water loss, 50 viscosity salt base mud.

Gas on this well is not dedicated.

RECEIVED  
AUG 11 1981OIL & GAS  
U.S. GEOLOGICAL SURVEY  
ROSWELL, NEW MEXICO

IN ABOVE SPACE DESCRIBE PROPOSED PROGRAM: If proposal is to deepen or plug back, give data on present productive zone and proposed new productive zone. If proposal is to drill or deepen directionally, give pertinent data on subsurface locations and measured and true vertical depths. Give blowout preventer program, if any.

## 24.

SIGNED

Agent for:

TITLE McClellan Oil Corporation

DATE August 10, 1981

(This space for Federal or State office use)

PERMIT NO.

(Orig. Sec.) GEORGE H. STEWART

APPROVAL DATE

APPROVED BY

TITLE

DATE

CONDITIONS OF APPROVAL, IF ANY:

\*See Instructions On Reverse Side

All distances must be from the outer boundaries of the Section.

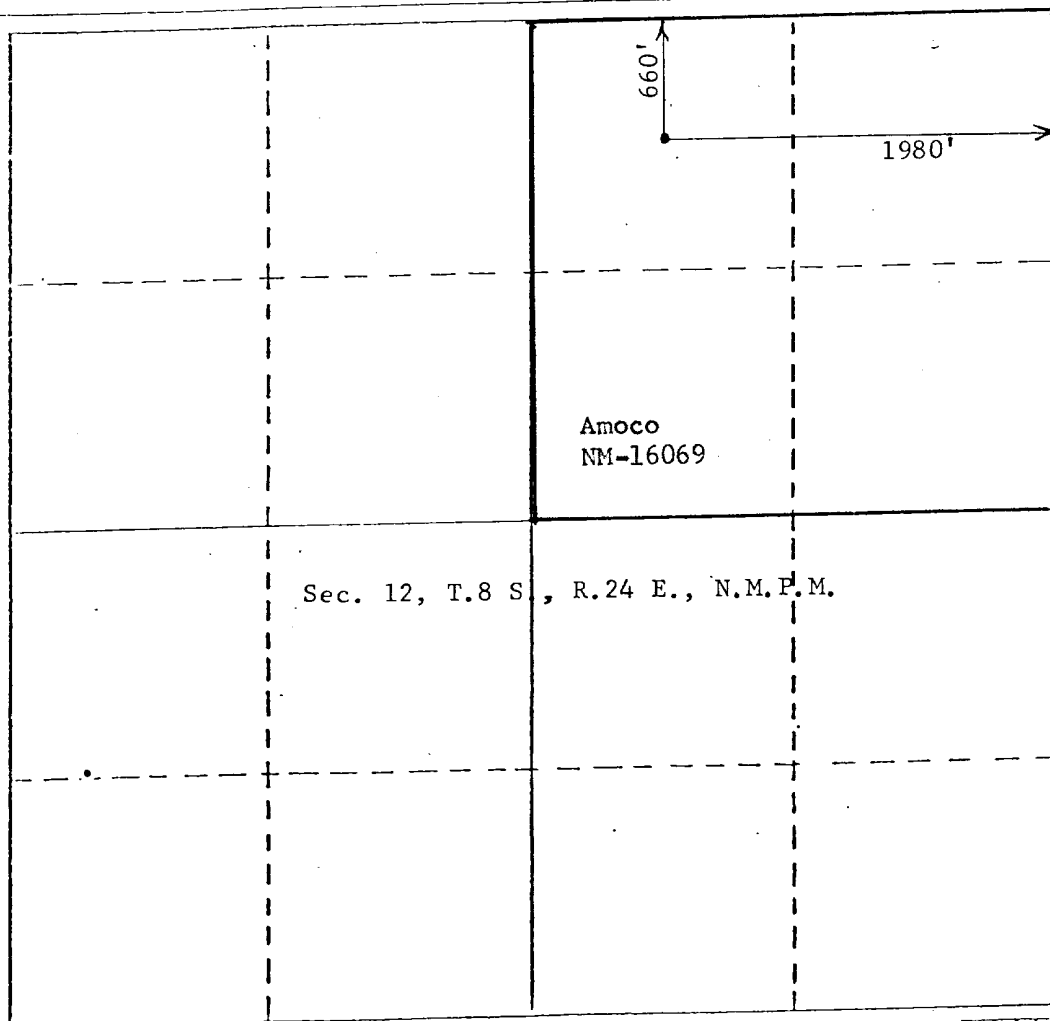
Operator <b>McClellan Oil Corp.</b>		Lease <b>Coyote Draw Federal</b>		Well No. <b>4</b>
Unit Letter <b>B</b>	Section <b>12</b>	Township <b>8 South</b>	Range <b>24 East</b>	County <b>Chaves</b>
Actual Footage Location of Well: 660 feet from the North line and 1980 feet from the East line				
Ground Level Elev. <b>3650</b>	Producing Formation <b>Abo</b>	Pool <b>Amoco NM-16069</b>	Dedicated Acreage: <b>160</b> Acres	

1. Outline the acreage dedicated to the subject well by colored pencil or hatchure marks on the plat below.
2. If more than one lease is dedicated to the well, outline each and identify the ownership thereof (both as to working interest and royalty).
3. If more than one lease of different ownership is dedicated to the well, have the interests of all owners been consolidated by communitization, unitization, force-pooling, etc?

☐ Yes ☐ No If answer is "yes," type of consolidation \_\_\_\_\_

If answer is "no," list the owners and tract descriptions which have actually been consolidated. (Use reverse side of this form if necessary.) \_\_\_\_\_

No allowable will be assigned to the well until all interests have been consolidated (by communitization, unitization, forced-pooling, or otherwise) or until a non-standard unit, eliminating such interests, has been approved by the Division.



CERTIFICATION

I hereby certify that the information contained herein is true and complete to the best of my knowledge and belief.

*George R. Smith*

Name  
**George R. Smith**

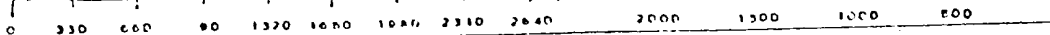
Position  
**Agent for:**

Company  
**McClellan Oil Corp.**

Date  
**August 10, 1981**

I hereby certify that the well location shown on this plat was plotted from field notes of actual surveys made by me or under my supervision, and that the same is true and correct to the best of my knowledge and belief.

Date Surveyed  
**July 28, 1981**  
Registered Professional Engineer and/or Land Surveyor  
**John D. Jaquess**  
Certificate No. **6290**  
Professional Engineer & L.S.



APPLICATION FOR DRILLING

McCLELLAN OIL CORPORATION  
Coyote Draw Federal Well No. 4  
660' FNL & 1980' FEL, Sec. 12-T8S-R24E  
Chaves County, New Mexico  
Lease No.: NM-16069  
(Development Well)

In conjunction with Form 9-331C, Application for Permit to Drill subject well, McClellan Oil Corporation submits the following items of pertinent information in accordance with USGS requirements:

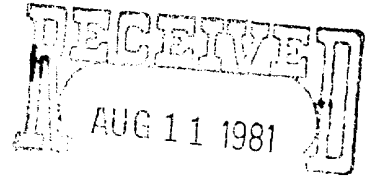
1. The geologic surface formation is Permian with quaternary alluvium and other surficial deposits.
2. The estimated tops of geologic markers are as follows:

San Andres	235'
Glorieta	1260'
Tubb	2740'
Abo	3400'
3. The estimated depth at which anticipated water, oil, or gas formations are expected to be encountered:  
Water: At approximately 200 feet.  
Oil: None expected.  
Gas: Abo between 3400' and 4000'.
4. Proposed Casing Program: See Form 9-331C.
5. Pressure Control Equipment: Blowout preventer is a Schaffer Model 39, 4500 lb. test. See Exhibit "E"
6. Mud Program: See Form 9-331C.
7. Auxiliary Equipment: Blowout Preventer, gas detector, kelly cock, pit level monitor, flow sensors and stabbing valve.
8. Testing, Logging and Coring Program:  
Drill Stem Tests: None Planned.  

Logging: FDC/CNL	Inter. Csg. to T. D.
DLL/MSFL	Inter. Csg. to T. D.
Gamma Ray	Surface to T. D.

  
Coring: None Planned.
9. No abnormal pressures or temperatures are anticipated. In the event abnormal pressures are encountered the proposed mud program will be modified to increase the mud weight.
10. Anticipated starting date: September 15, 1981.  
Anticipated completion of drilling operations: Two weeks.

McCLELLAN OIL CORPORATION  
Coyote Draw Federal Well No. 4  
660' FNL & 1980' FEL, Sec. 12-T8S-R24E  
Chaves County, New Mexico  
Lease No.: NM-16069  
(Development Well)



This plan is submitted with the Application for Permit to Drill the above captioned well. The purpose of the plan is to describe the location of the proposed well, the proposed construction activities and operations plan, to be followed in rehabilitating the surface after completion of the operation so that a complete appraisal can be made of the environmental effects associated with the operations.

1. EXISTING ROADS:

- A. Exhibit "A" is a portion of a New Mexico State Highway Department map showing the location of the well as staked. Exhibit "B" is a section of a USGS Topo map also showing the well as staked. The well site is approximately 19 miles northeast of the U. S. Highway 285/70 "Y" north of Roswell, New Mexico. There will be approximately 7.6 miles of U. S. Highway 285 north, and 8.7 miles of county maintained ranch road plus 2.7 miles of oil field dirt road.
- B. Directions: Travel north on U. S. Highway 285 for approximately 7.6 miles from the U. S. Highway 285/70 "Y". Upon reaching and electric power station on the left side of the highway, turn right (east) onto the county/ranch dirt road. There is a Red Bluff ranch sign at this turnoff. Continue on this road for approximately 7.9 miles passing a cattle guard and a large metal sign of a bull on the left. Continue past the sign .8 mile and turn left (west) off of the county road onto a bladed oilfield road. Travel west and southwest past two recently drilled locations 2.6 miles to a cattle guard. The start of the new access road is approximately .1 mile past the cattle guard on the left. The location and access road are staked and flagged, with the wellsite approximately 230 feet east of the road.

2. PLANNED ACCESS ROAD:

- A. Length and Width: The new access road will be 12 feet wide (20' ROW) and approximately 100 feet long.
- B. Construction: The new road will be constructed by grading, watering and compacting the existing surface material. Caliche will be used in those spots that might require it. The existing access road will be repaired in places. The surface will be properly drained.
- C. Turnouts: None will be required.
- D. Culverts: None will be required.
- E. Cuts and Fills: None required.
- F. Gates and Cattleguards: None required.

LOCATION OF EXISTING WELLS:

- A. Existing wells within a two mile radius are shown on Exhibit "C".

4. LOCATION OF EXISTING AND/OR PROPOSED FACILITIES:

- A. There are no production facilities on this lease at the present time.
- B. If the well proves to be commercial, the necessary production facilities, gas separation-process equipment and tank battery will be installed on the drilling pad.

5. LOCATION AND TYPE OF WATER SUPPLY:

- A. It is planned to drill the proposed well with fresh and brine water. The water will be obtained from private or commercial sources and will be transported over the existing and proposed access roads.

6. SOURCE OF CONSTRUCTION MATERIALS:

- A. Caliche used for surfacing the road and the well site pad will be obtained from commercial sources if needed. Caliche is not readily available in the area. The existing surface material will be used for surfacing the new access road and the well site pad. Top soil from the location will be stockpiled near the location for future rehabilitation use. No surface materials will be disturbed except for those necessary for actual grading and leveling of the drill site and access road.

7. METHODS OF HANDLING WASTE DISPOSAL:

- A. Drill cuttings will be disposed of in the reserve pits.
- B. Drilling fluids will be allowed to evaporate in the reserve pits until the pits are dry.
- C. All pits will be fenced with normal fencing materials to prevent livestock from entering the area.
- D. Water produced during operations will be collected in tanks until hauled to an approved disposal system, or separate disposal application will be submitted to the USGS for approval.
- E. Oil produced during operations will be collected in tanks until sold.
- F. Current laws and regulations pertaining to the disposal of human waste will be complied with.
- G. Trash, waste paper, garbage and junk will be buried in a separate trash pit and covered with a minimum of 24 inches of dirt. All waste material will be contained to prevent scattering by the wind.
- H. All trash and debris will be buried or removed from the well site within 30 days after finishing drilling and/or completion operations.

8. ANCILIARY FACILITIES:

- A. None required.

9. WELLSITE LAYOUT:

- A. Exhibit "D" shows the relative location and dimensions of the well pad, reserve pits, and major rig components. The pad and pit area has been staked and flagged.
- B. Mat Size: 195' X 175'.
- C. Cut and Fill: The location slopes to the south 2-3 feet in 100 feet. This will require cutting the north side of the pad and fill to the south side. The arroya to the east of the drillsite 100 - 150 feet should not be affected or disturbed.
- D. The surface will be topped and compacted with the existing surface and pit materials. The reserve pit will be plastic lined.

10. PLANS FOR RESTORATION OF THE SURFACE:

- A. After completion of drilling and/or completion operations all equipment and other material not used for operations will be removed. Pits will be filled and the location cleaned of all trash and junk to leave the wellsite in an aesthetically pleasing a condition as possible.
- B. Any unguarded pits containing fluids will be fenced until filled.
- C. If the proposed well is non-productive, all rehabilitation and/or vegetation requirements of the Bureau of Land Management and the United States Geological Survey will be complied with and will be accomplished as expeditiously as possible. All pits will be filled and leveled within 90 days after abandonment.

11. OTHER INFORMATION:

- A. Topography: The land surface in the vicinity of the wellsite is sloping to the south 2 - 3 feet in 100 feet. The sloping increases to the north causing eroded areas and a 6 - 8 foot wide and deep arroyo on the east side of the wellsite. The actual drill site is fairly level.
- B. Soil: The topsoil at the wellsite is a sandy loam with occasional outcrops of gypsum rock.
- C. Flora and Fauna: The vegetative cover consists primarily of broom snakeweed along with yucca, mesquite, saltbrush and cactus with the area almost completely barren of native grasses with only a few spots of dropseed and fluffgrass noted. Jackrabbits and cottontail rabbits were observed and it is likely that other typical semi-arid desert wildlife inhabit the area, which is used for cattle grazing.
- D. Ponds and Streams: There are no streams of natural or manmade ponds in the area.

11. OTHER INFORMATION: cont.....

- E. Residences and other Structures: There are no residences or other structures within a mile of the well site.
- F. Land Use: Cattle grazing.
- G. Surface Ownership: The proposed location and access road is on Federal surface and minerals.
- H. There is no significant evidence of any archaeological, historical or cultural sites in the area. An archaeological survey has been conducted by New Mexico Archaeological Services, Inc., P. O. Box 1341 Carlsbad, New Mexico 88220, and their report has been submitted to the appropriate government agencies.

12. OPERATOR'S REPRESENTATIVE:

- A. The field representative responsible for assuring compliance with the approved surface use and operations plan is as follows:

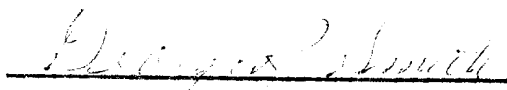
Paul Ragsdale  
601 Moore  
Roswell, New Mexico 88201  
Office Phone: (505) 622-3200  
Mobile Phone: 623-0989 Unit # 4128  
Home Phone: (505) 623-3940

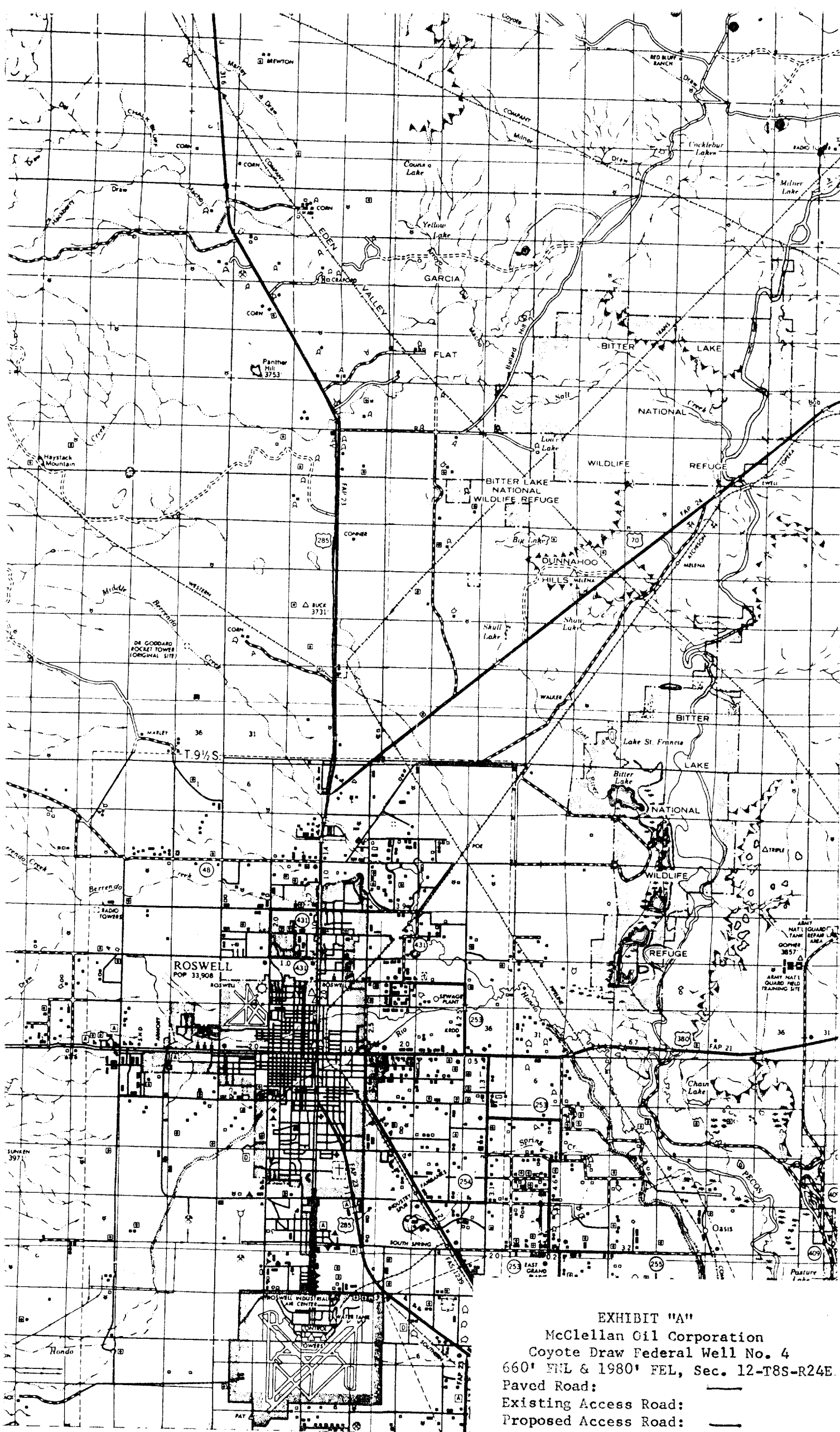
Jack McClellan  
3106 N. Montana  
Roswell, New Mexico 88201  
Office Phone: (505) 622-3200  
Home Phone: (505) 622-4076

13. CERTIFICATION:

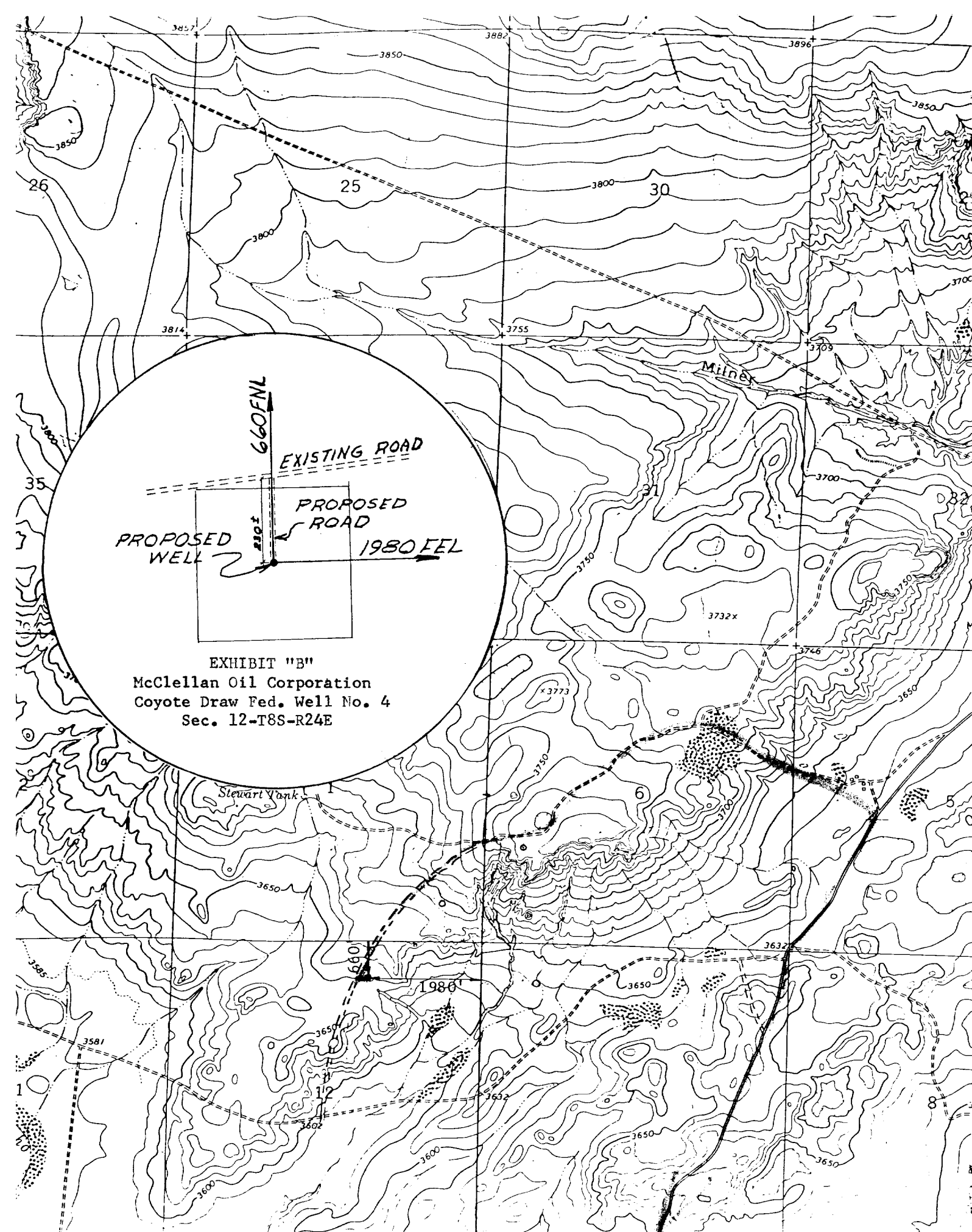
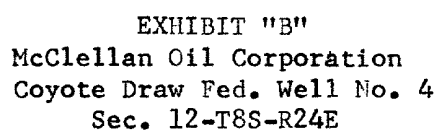
I Hereby certify that I, or persons under my direct supervision, have inspected the proposed drillsite and access route; that I am familiar with the conditions which presently exist; that the statements made in the plan are, to the best of my knowledge true and correct; and that the work associated with the operations proposed herein will be performed by McClellan Oil Corporation and its contractors and subcontractors in conformity with this plan and the terms and conditions under which it is approved.

August 10, 1981

  
George R. Smith  
Agent for:  
McClellan Oil Corporation







State	State	State	State	State	State	State
Yates 7-1-87 LG-4346 123	Yates 7-1-87 LG-4346 123	Yates 7-1-87 LG-4346 504	Yates 7-1-87 LG-4342 513	McClellan Oil 9-1-86 20306	Mesa Pet. 1/2 Public Lds. Expl. 6-1-86 27970	Mesa Pet. 1/2 Public Lds. Expl. 6-1-86 27970
22	23	Yates 5-1-87 22021	24	19	20	21
State	State	U.S.	U.S.	U.S.	U.S.	U.S.
Yates Pet. (Marolo) 7-1-87 LG-4347 513	Yates 7-1-87 LG-4346 123	Yates 5-1-87 22021	Yates 5-1-87 22021	McClellan Oil 9-1-86 20306	J.H. Deason 10-1-87 31096	Yates, et al 12-1-87 31944
27	26	25	30	29	28	28
State	State	U.S.	U.S.	U.S.	U.S.	U.S.
Yates 7-1-87 LG-4351 504	Yates 7-1-87 LG-4351 504	Yates 5-1-87 22021	Yates 7-1-87 LG-4352 504	Yates 6-1-86 11759	McClellan Oil 9-1-86 20306	Yates, et al 12-1-87 31944
34	35	36	31	32	33	33
State	State	U.S.	State	State	State	State
Yates 7-1-87 LG-4349 123	Yates 7-1-87 LG-4351 504	Marolo 7-1-87 LG-4355 642	Mesa Pet. 1/2 Public Lds. Expl. 5-1-84 20932	McClellan Oil 8-1-82 16322	Yates 9-1-87 30623	Yates Pet. 6-1-82 16322
DL Bauer 9-1-89 37596	Amoco 7-1-82 16069	Mesa Pet. 1/2 Public Lds. Expl. 3-1-82 14987	Mesa Pet. 1/2 Public Lds. Expl. 5-1-84 20932	Amoco 7-1-82 16069	Yates 6-1-87 30623	Yates Pet. 6-1-79 9539
U.S.	U.S.	U.S.	U.S.	U.S.	U.S.	U.S.
DL Bauer 9-1-89 37596	Amoco 7-1-82 16069	Mesa Pet. 1/2 Public Lds. Expl. 3-1-82 14987	Mesa Pet. 1/2 Public Lds. Expl. 5-1-84 20932	Amoco 7-1-82 16069	Yates 6-1-87 30623	Yates Pet. 6-1-79 9539
10	11	12	13	14	15	16
U.S.	U.S.	U.S.	U.S.	U.S.	U.S.	U.S.
DL Bauer 9-1-89 37596	Mesa Pet. 1/2 Public Lds. Expl. 3-1-82 14987	Mesa Pet. 1/2 Public Lds. Expl. 3-1-82 14987	Mesa Pet. 1/2 Public Lds. Expl. 3-1-82 14987	Yates Pet. et al 4-1-89 26156	Mesa Pet. 1/2 Public Lds. Expl. 2-1-87 29416	Yates Pet. 6-1-79 9539
15	14	13	12	11	10	9
U.S.	U.S.	U.S.	U.S.	U.S.	U.S.	U.S.
DL Bauer 9-1-89 37596	Mesa Pet. 1/2 Public Lds. Expl. 3-1-82 14987	Mesa Pet. 1/2 Public Lds. Expl. 3-1-82 14987	Mesa Pet. 1/2 Public Lds. Expl. 3-1-82 14987	Yates Pet. et al 4-1-89 26156	Mesa Pet. 1/2 Public Lds. Expl. 2-1-87 29416	Yates Pet. 6-1-79 9539
4	23	24	25	26	27	28
U.S.	State	U.S.	U.S.	U.S.	U.S.	U.S.
Mesa Pet. 1/2 Public Lds. Expl. 11-1-86 22623	Yates 7-1-87 LG-4358 504	Musky Oil 8-1-82 16316	Musky Oil 8-1-82 16316	McClellan Oil 9-1-86 20306	Yates Pet. 10-1-82 LS-679 15	Yates Pet. 10-1-82 LS-679 15
U.S.	State	U.S.	U.S.	U.S.	State	State
Yates 6-20-84	Yates 6-20-84	Yates 7-1-87 LG-4359 504	Yates 7-1-87 LG-4358 504	Yates 6-20-84	Yates 7-1-87 LG-4359 504	Yates 7-1-87 LG-4358 504
Yates 6-20-84	Yates 6-20-84	Yates 7-1-87 LG-4359 504	Yates 7-1-87 LG-4358 504	Yates 6-20-84	Yates 7-1-87 LG-4359 504	Yates 7-1-87 LG-4358 504

A	BOTTOM DOGHOUSE	G	Substructure
B	FUEL TANKS	H	Top Doghouse
C	Light Plant	I	V-Door
D	Suction Pump (mud mixing)	J	Car Walk
E	Suction Pump	K	Pipe Racks
F	Fresh Water Tank	L	Pipe Racks

TEX-MEX RIG #2

90°

M HEAD BEHE. BRCK  
96.70' from CENTER of HOLE

CELLAR = 6' x 6'

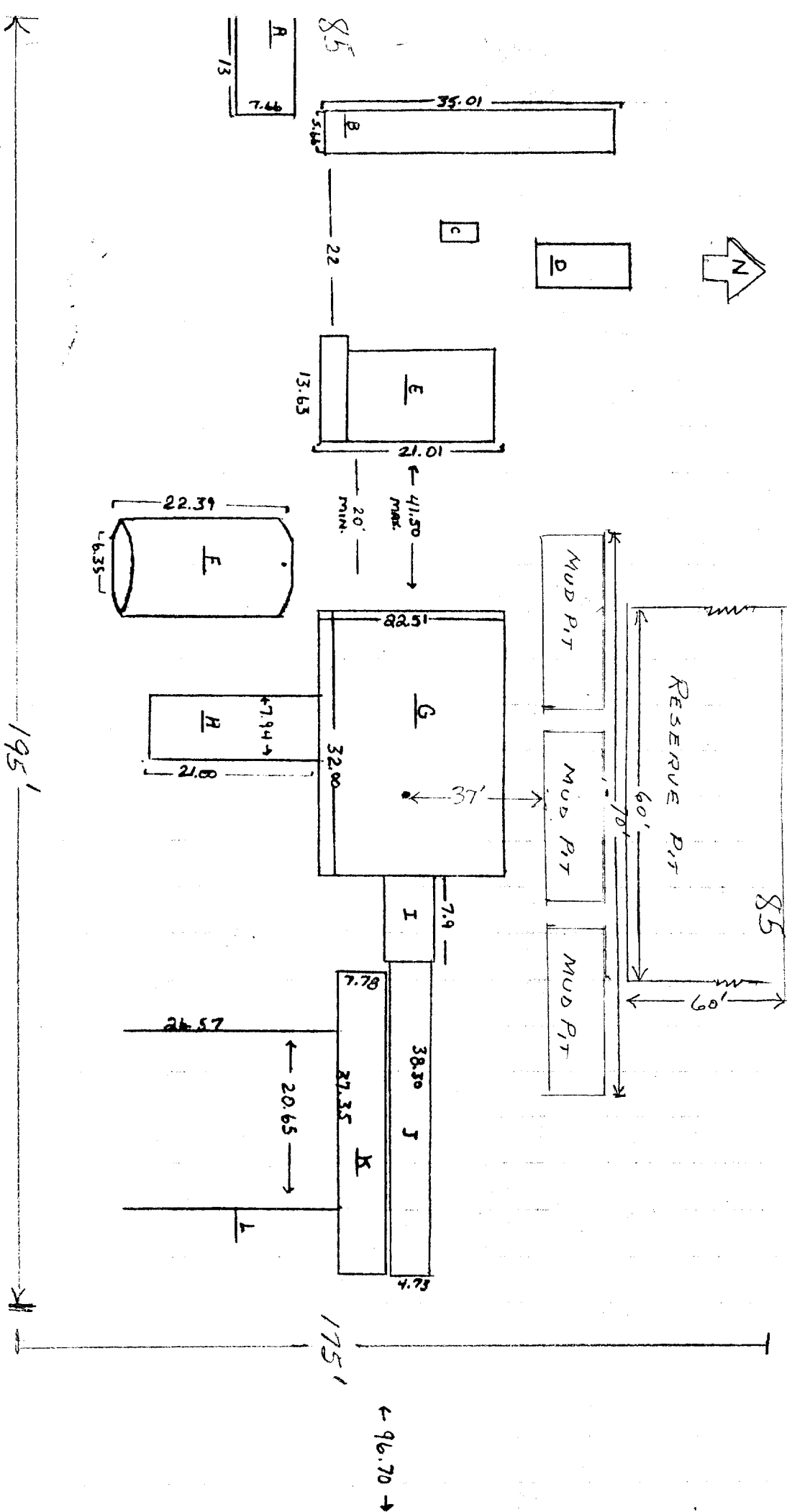
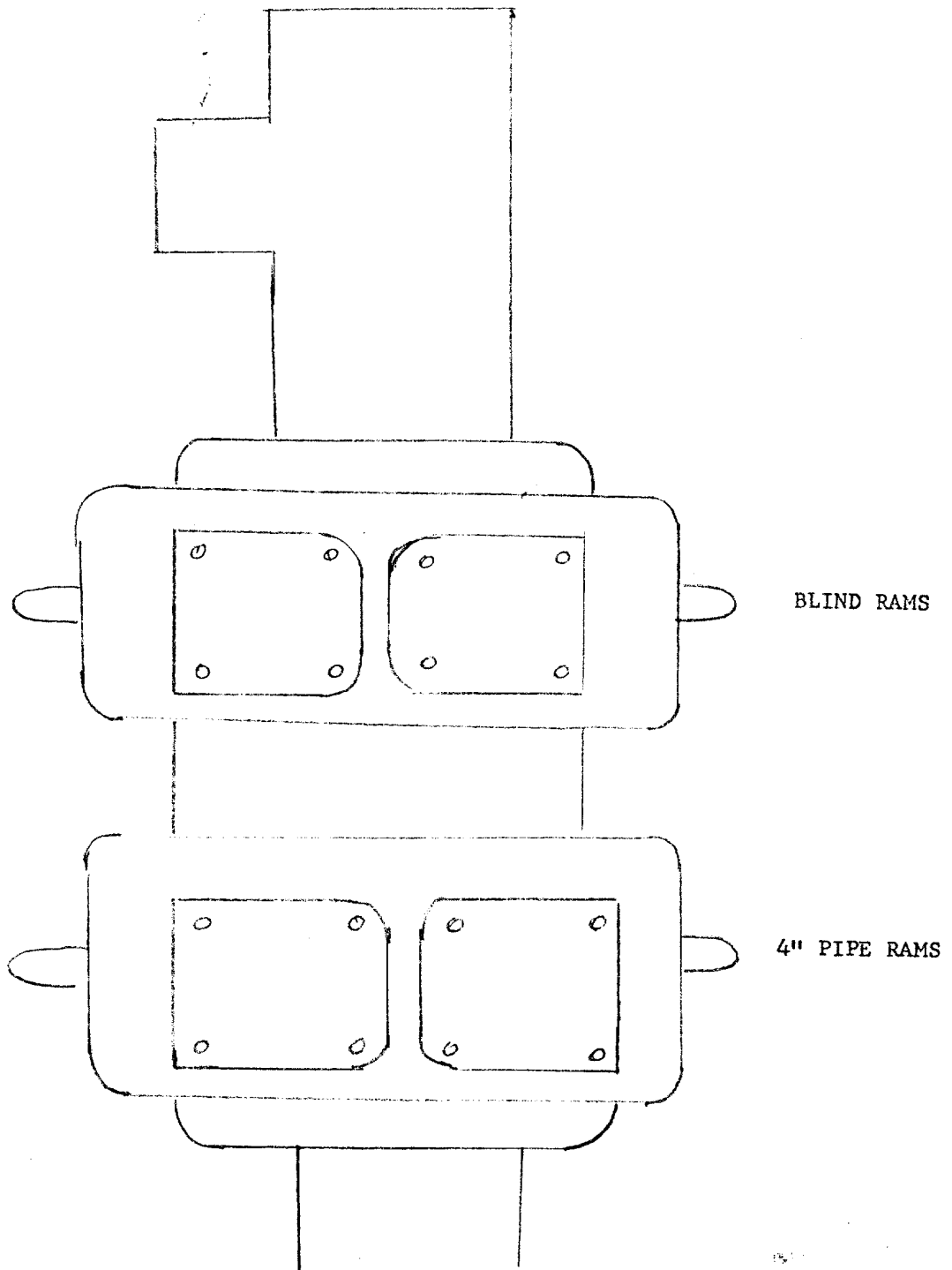


EXHIBIT "D"  
McCLELLAN OIL CORPORATION  
Coyote Draw Federal Well No. 4  
Rig Layout



TEX-MEX BOP Diagram for Rig # 2  
Schaffer Model 39  
4500 lb. psi test

EXHIBIT "E"  
McCLELLAN OIL CORPORATION  
Coyote Draw Federal Well No. 4  
BOP Diagram