

STATE OF NEW MEXICO
ENERGY AND MINERALS DEPARTMENT

OIL CONSERVATION DIVISION

P. O. BOX 2088

SANTA FE, NEW MEXICO 87504

REC'D

DEC 4 1981

O. C. D.
ARTESIA, OFFICE

30-005-61261

Form C-101
Revised 10-1-78

NO. OF COPIES RECEIVED	5
DISTRIBUTION	
SANTA FE	1
FILE	1
U.S.G.S.	2
LAND OFFICE	
OPERATOR	1

5A. Indicate Type of Lease
STATE ☐ FEE ☒

5. State Oil & Gas Lease No.

APPLICATION FOR PERMIT TO DRILL, DEEPEN, OR PLUG BACK

1a. Type of Work

DRILL ☒

DEEPEN ☐

PLUG BACK ☐

b. Type of Well

OIL WELL ☒

GAS WELL ☐

OTHER

SINGLE ZONE ☐

MULTIPLE ZONE ☐

2. Name of Operator

Stevens Operating Corporation

3. Address of Operator

P. O. Box 2203, Roswell, New Mexico 88201

4. Location of Well

UNIT LETTER H LOCATED 1650 FEET FROM THE North LINE

AND 990 FEET FROM THE East LINE OF SEC. 12 TWP. 9S RCT. 28E N.M.P.M.

7. Unit Agreement Name

8. Farm or Lease Name

O'Brien "D"

9. Well No.

4

10. Field and Pool, or Wildcat
Twin Lakes-San Andres Assoc.

12. County

Chaves

19. Proposed Depth	2950	19A. Formation	San Andres	20. Rotary or C.T.	Rotary
21. Elevations (Show whether D.P., H.T., etc.)	3921.10 GR, 3926.10 KB	21A. Kind & Status Plug. Bond	Statewide	21B. Drilling Contractor	Artesia Fishing Tool
				22. Approx. Date Work will start	December 9, 1981

23.

PROPOSED CASING AND CEMENT PROGRAM

SIZE OF HOLE	SIZE OF CASING	WEIGHT PER FOOT	SETTING DEPTH	SACKS OF CEMENT	EST. TOP
12 1/4"	8 5/8"	20#	130'	75 sacks	Circ.
7 7/8"	4 1/2"	9.5#	2950'	200 sacks	

Will drill with water & mud to T.D., log, and if indicated productive, case to TD & perforate in producing intervals.

Adequate blowout preventers will be used.

APPROVAL VALID FOR 180 DAYS
PERMIT EXPIRES 6-8-82
UNLESS DRILLING UNDERWAY

IN ABOVE SPACE DESCRIBE PROPOSED PROGRAM: IF PROPOSAL IS TO DEEPEN OR PLUG BACK, GIVE DATA ON PRESENT PRODUCTIVE ZONE AND PROPOSED NEW PRODUCTIVE ZONE. GIVE BLOWOUT PREVENTER PROGRAM, IF ANY.

I hereby certify that the information above is true and complete to the best of my knowledge and belief.

Signed Pat Thompson Title Production Clerk Date 12-3-81

(This space for State Use)

APPROVED BY Mr. Williams TITLE OIL AND GAS INSPECTOR DATE DEC 8 1981

CONDITIONS OF APPROVAL, IF ANY:

N. MEXICO OIL CONSERVATION COMMISS
WELL LOCATION AND ACREAGE DEDICATION PLAT

Form C-102
 Supersedes C-128
 Effective 1-1-85

All distances must be from the outer boundaries of the Section.

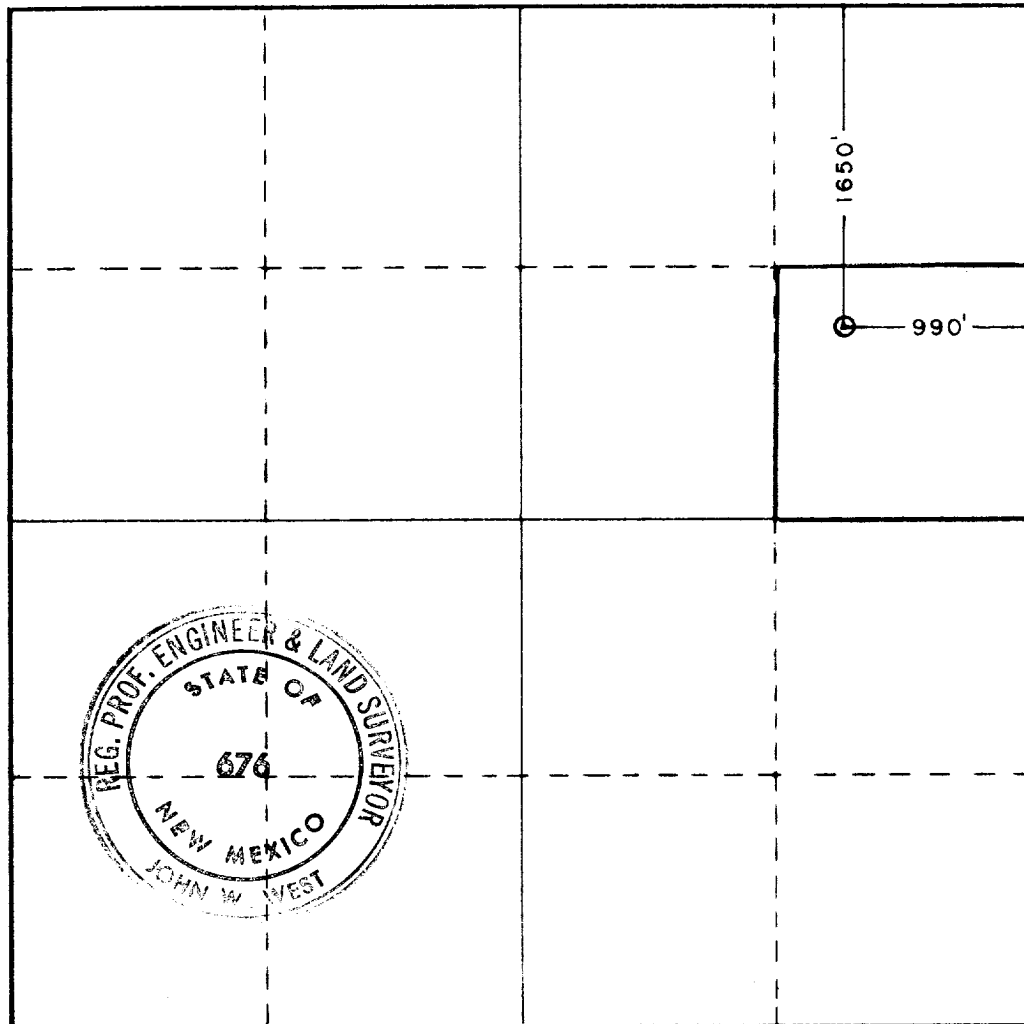
Operator Stevens Operating Corporation Stevens Oil Company			Lease O'Brien D		Well No. 4
Unit Letter H	Section 12	Township 9S	Range 28E	County Chaves	
Actual Footage Location of Well: 1650 feet from the North line and 990 feet from the East line					
Ground Level Elev. 3921.10	Producing Formation San Andres		Pool Twin Lakes-San Andres Assoc.	Dedicated Acreage: 40 Acres	

1. Outline the acreage dedicated to the subject well by colored pencil or hachure marks on the plat below.
2. If more than one lease is dedicated to the well, outline each and identify the ownership thereof (both as to working interest and royalty).
3. If more than one lease of different ownership is dedicated to the well, have the interests of all owners been consolidated by communitization, unitization, force-pooling, etc?

☐ Yes ☐ No If answer is "yes," type of consolidation _____

If answer is "no," list the owners and tract descriptions which have actually been consolidated. (Use reverse side of this form if necessary.) _____

No allowable will be assigned to the well until all interests have been consolidated (by communitization, unitization, forced-pooling, or otherwise) or until a non-standard unit, eliminating such interests, has been approved by the Commission.



CERTIFICATION

I hereby certify that the information contained herein is true and complete to the best of my knowledge and belief.

Pat Thompson
 Name
Pat Thompson
 Position
Production Clerk
 Company
Stevens Operating Corporation
 Date
12-3-81

I hereby certify that the well location shown on this plat was plotted from field notes of actual surveys made by me or under my supervision, and that the same is true and correct to the best of my knowledge and belief.

November 10, 1980

Date Surveyed
 Registered Professional Engineer and/or Land Surveyor
John W. West
 Certificate No. **JOHN W. WEST 676**
PATRICK A. ROMERO 6663
Ronald J. Eldson 3239

