

NM OIL CONS. COMMISSION  
Driller DD  
Artesia, NM 88210  
UNITED STATES  
DEPARTMENT OF THE INTERIOR  
GEOLOGICAL SURVEY

SUBMIT IN DUPLICATE  
(Other Instructions on  
Reverse Side)

Form Approved  
Budget Bureau No. 42 R1425

30-005-61278

5. LEASE DESIGNATION AND SERIAL NO.  
NM 22060

6. IF INDIAN, ALLOTTEE OR TRIBE NAME

7. UNIT AGREEMENT NAME

8. FARM OR LEASE NAME  
Sherri

9. WELL NO.  
1

10. FIELD AND POOL OR WILDCAT  
~~Undesignated~~ ABO

11. SEC., T., R., M., OR BLK.  
AND SURVEY OR AREA  
28-8S-22E

12. COUNTY OR PARISH  
Chaves

13. STATE  
N.M.

14. DISTANCE IN MILES AND DIRECTION FROM NEAREST TOWN OR POST OFFICE\*  
15 Miles Northwest of Roswell, New Mexico  
ARTESIA, OFFICE

15. DISTANCE FROM PROPOSED\* LOCATION TO NEAREST PROPERTY OR LEASE LINE, FT.  
(Also to nearest drlg. unit line, if any)  
760'

16. NO. OF ACRES IN LEASE  
960

17. NO. OF ACRES ASSIGNED TO THIS WELL  
160

18. DISTANCE FROM PROPOSED LOCATION\* TO NEAREST WELL, DRILLING, COMPLETED, OR APPLIED FOR, ON THIS LEASE, FT.  
None

19. PROPOSED DEPTH  
3500'

20. ROTARY OR CABLE TOOLS  
Rotary

21. ELEVATIONS (Show whether DF, RT, GR, etc.)  
3995 GL

22. APPROX. DATE WORK WILL START\*  
December 15, 1981

PROPOSED CASING AND CEMENTING PROGRAM

SIZE OF HOLE	SIZE OF CASING	WEIGHT PER FOOT	SETTING DEPTH	QUANTITY OF CEMENT
12 1/4"	8 5/8"	24# J55	1500'	Circulate to surface
7 7/8"	4 1/2"	10.5# J55	3500'	300 sx
				To isolate water, oil and gas

Propose to drill 12 1/4" hole to approximately 1500'. Set 8 5/8" surface casing and cement to surface. Install ram type BOP. Test BOP and casing to 1200 psi. Drill 7 7/8" hole to Abo objective. Run 4 1/2" production casing and cement with sufficient cement to isolate fresh water from oil or gas zones. Complete by perforating and stimulating favorable intervals.

Gas is not dedicated.

RECEIVED  
NOV 18 1981  
U.S. GEOLOGICAL SURVEY

APPROVED  
NOV 17 1981

IN ABOVE SPACE DESCRIBE PROPOSED PROGRAM: If proposal is to deepen or plug back, give data on present productive zone and proposed new productive zone. If proposal is to drill or deepen directionally, give pertinent data on subsurface locations and measured and true vertical depths. Give blowout preventer program, if any.

24. SIGNED JERRY W. LONG TITLE Agent DATE November 17, 1981

(This space for Federal or State office use)

PERMIT NO. **APPROVED** APPROVAL DATE \_\_\_\_\_

APPROVED BY JAMES A. GILLHAM TITLE \_\_\_\_\_ DATE \_\_\_\_\_

CONDITIONS OF APPROVAL **DEC 14 1981**

**JAMES A. GILLHAM**  
DISTRICT SUPERVISOR

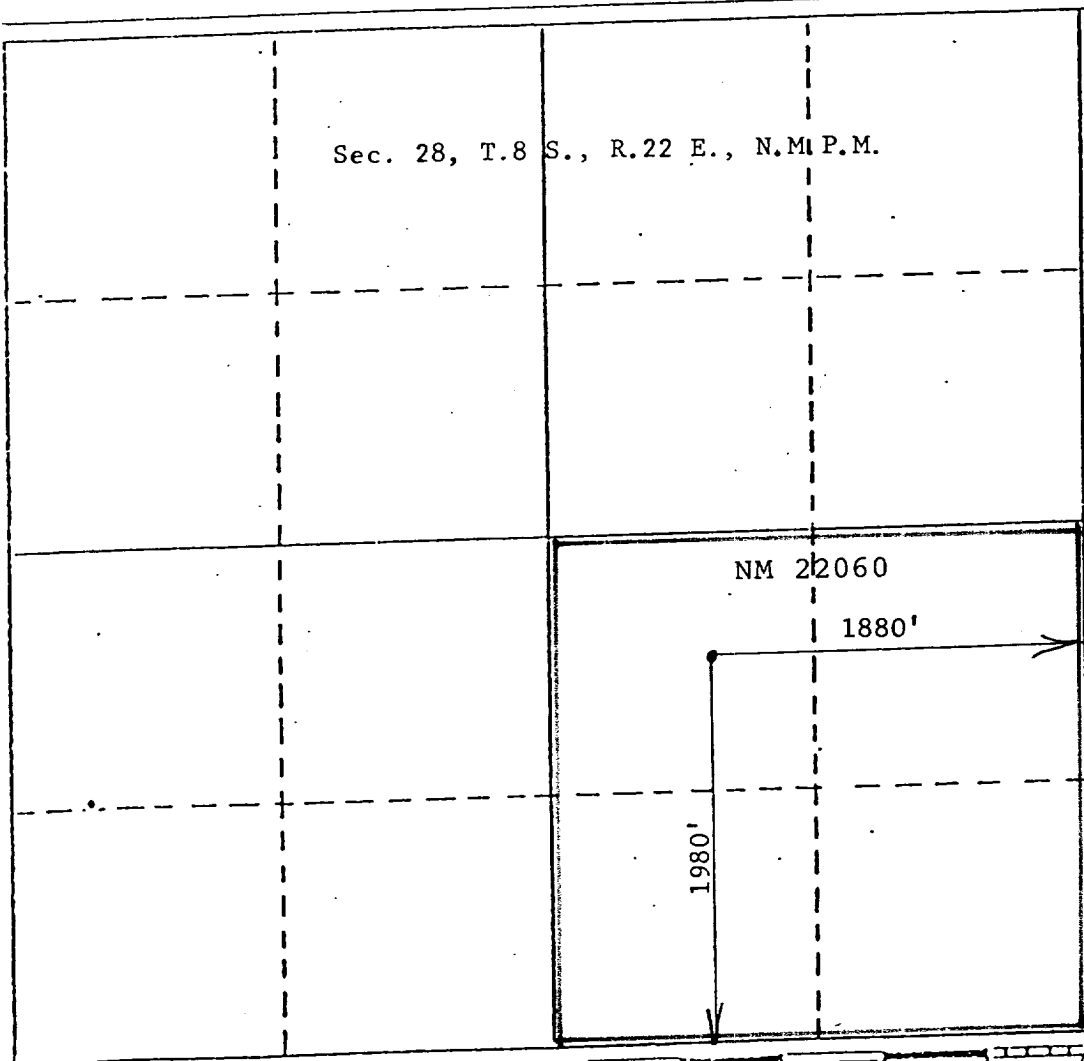
\*See Instructions On Reverse Side

All distances must be from the outer boundaries of the Section.

Operator McKay Oil Corp.		Lease <del>XXXXXX</del> Sherri		Well No. 1 <del>XXXX</del>
Unit Letter J	Section 28	Township 8 South	Range 22 East	County Chaves
Actual Postage Location of Well: 1980 feet from the South line and 1880 feet from the East line				
Ground Level Elev. 3995	Producing Formation Abo	Pool Undesignated	Dedicated Acreage: 160 <del>Sec</del> Acres	

1. Outline the acreage dedicated to the subject well by colored pencil or hachure marks on the plat below.
2. If more than one lease is dedicated to the well, outline each and identify the ownership thereof (both as to working interest and royalty). Single lease
3. If more than one lease of different ownership is dedicated to the well, have the interests of all owners been consolidated by communitization, unitization, force-pooling, etc?

Yes  No If answer is "yes," type of consolidation \_\_\_\_\_  
If answer is "no," list the owners and tract descriptions which have actually been consolidated. (Use reverse side of this form if necessary.) \_\_\_\_\_  
No allowable will be assigned to the well until all interests have been consolidated (by communitization, unitization, forced-pooling, or otherwise) or until a non-standard unit, eliminating such interests, has been approved by the Division.



**CERTIFICATION**

I hereby certify that the information contained herein is true and complete to the best of my knowledge and belief.

*Jerry W. Long*  
Name  
JERRY W. LONG

Position  
Agent

Company  
MCKAY OIL CORPORATION

Date  
November 17, 1981

I hereby certify that the well location shown on this plat was plotted from field notes of actual surveys made by me or under my supervision, and that the same is true and correct to the best of my knowledge and belief.

Date surveyed  
November 2, 1981

Registered Professional Engineer and/or Surveyor  
*John D. Jaquess*  
John D. JAQUESS, P.E. & L.S.  
Certificate No. 6290

SUPPLEMENTAL DRILLING DATA

MCKAY OIL CORPORATION  
No.1 Sherri  
NW $\frac{1}{4}$ SE $\frac{1}{4}$  Sec.28-8S-22E  
Chaves County, N.M.

NM 22060

The following items supplement Form 9-331C in accordance with NTL-6 instructions.

1. SURFACE FORMATION: San Andres
2. ESTIMATED TOPS OF GEOLOGIC MARKERS:

Glorieta	550'
Yeso	750'
Tubb	2150'
Abo	2800'
3. ESTIMATED DEPTHS TO WATER, OIL OR GAS FORMATIONS:

Fresh water	0'-1000'
Gas	2800'-3500'
4. PROPOSED CASING PROGRAM: See Form 9-331C
5. PRESSURE CONTROL EQUIPMENT: Blowout preventer stack will consist of at least a double-ram blowout preventer rated to 3000#WP. A sketch of the BOP is attached.
6. CIRCULATING MEDIUM:

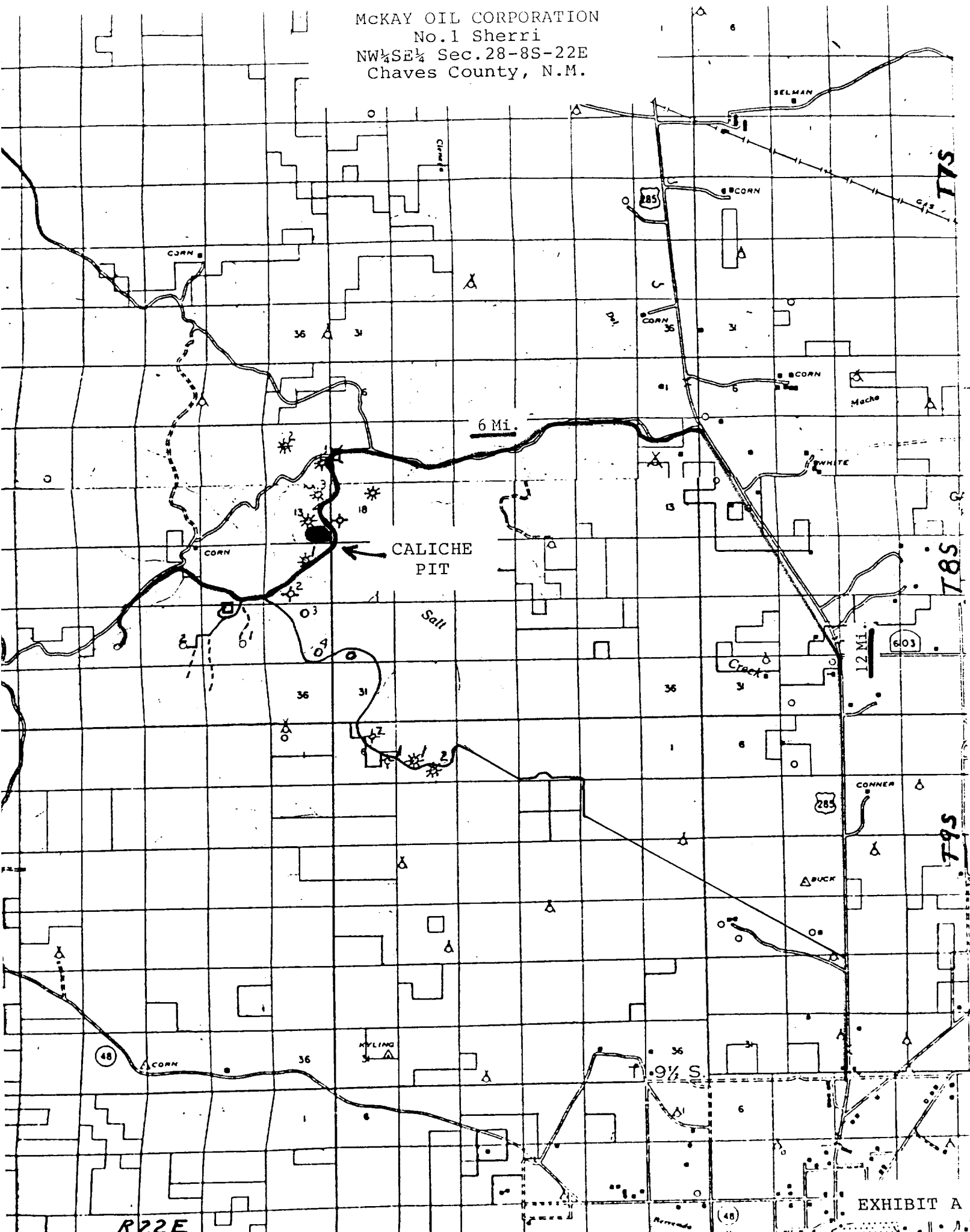
0'-1000'	Fresh water native mud
1000'-1500'	Salt gel mud
1500'-TD	Salt gel and diesel

Mud additives will be used to control water loss.
7. AUXILIARY EQUIPMENT: Full-opening kelly cock, to fit the drill string in use, will be kept on the rig floor at all times.
8. TESTING, LOGGING AND CORING PROGRAM:

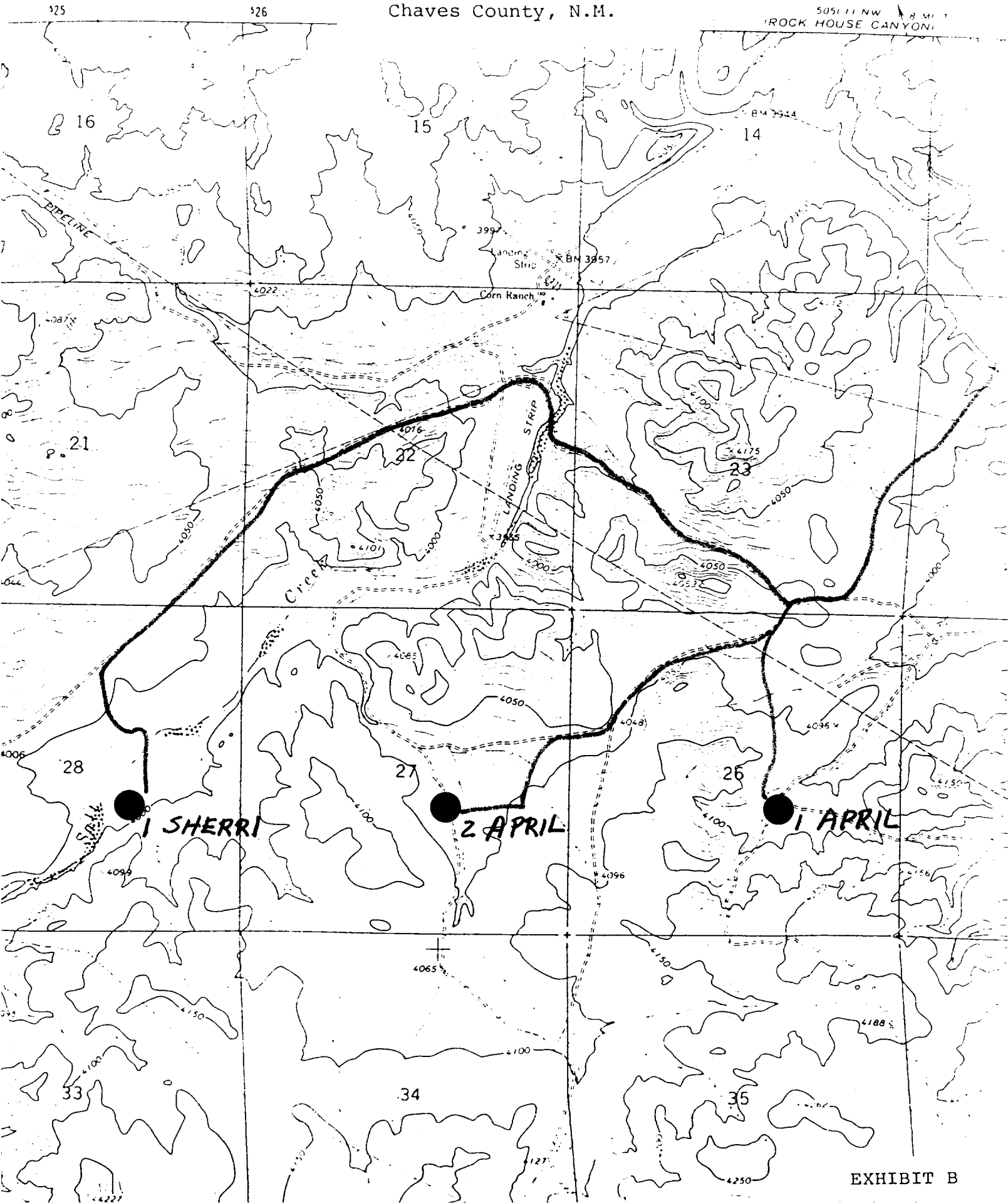
Samples:	Catch samples from surface to TD.
DST's:	None
Logging:	GR-CNL from surface to TD. FDC from Intermediate casing shoe to TD.
Coring:	None

9. ABNORMAL PRESSURES, TEMPERATURES OR HYDROGEN SULFIDE:  
None anticipated. Maximum bottom-hole pressure should not exceed 1500 psi.
10. ANTICIPATED STARTING DATE: Drilling will commence about December 15, 1981. Drilling should be completed within 10 days. Completion operations (perforations and stimulation) will follow drilling operations.

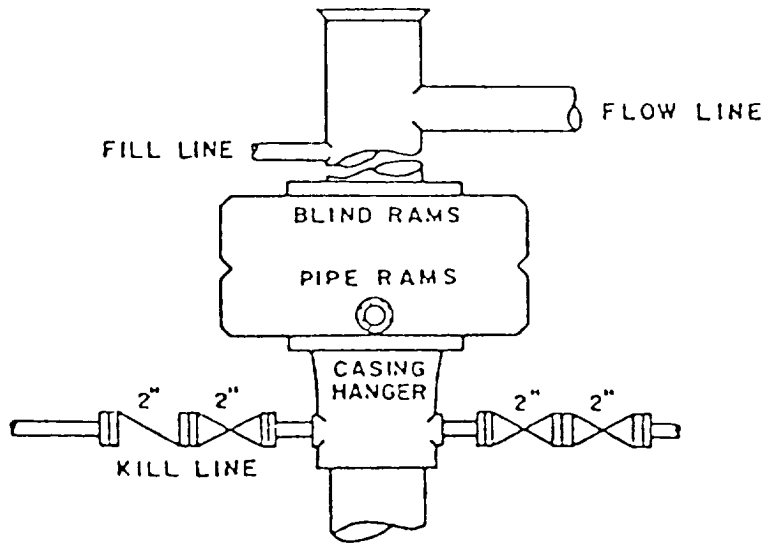
MCKAY OIL CORPORATION  
No. 1 Sherri  
NW $\frac{1}{4}$ SE $\frac{1}{4}$  Sec. 28-8S-22E  
Chaves County, N.M.



McKAY OIL CORPORATION  
No. 1 Sherri  
NW $\frac{1}{4}$ SE $\frac{1}{4}$  Sec. 28-8S-22E  
Chaves County, N.M.



MCKAY OIL CORPORATION  
No.1 Sherri  
NW $\frac{1}{4}$ SE $\frac{1}{4}$  Sec.28-8S-22E  
Chaves County, N.M.



BOP STACK

3000 PSI WORKING PRESSURE