

30-005-61297

Form C-101
Revised 10-1-78

NO. OF COPIES RECEIVED		
DISTRIBUTION		
SANTA FE	1	
FILL	1	7
U.S.G.S.	1	
LAND OFFICE		
OPERATOR	1	

RECEIVED

DEC 21 1981

O. C. D.
ARTESIA, OFFICE

5A. Indicate type of Lease
STATE FCC

5. State Oil & Gas Lease No.
LG-569

APPLICATION FOR PERMIT TO DRILL, DEEPEN, OR PLUG BACK

Type of work
Type of Well DRILL DEEPEN PLUG BACK

OIL WELL GAS WELL OTHER SINGLE ZONE MULTIPLE ZONE

Name of Operator
Yates Petroleum Corporation

Address of Operator
207 S. 4th, Artesia, New Mexico 88210

Location of Well UNIT LETTER A LOCATED 660' FEET EAST OF North
660 FEET EAST East LINE OF SEC. 32 TWP. 7S R. 26E

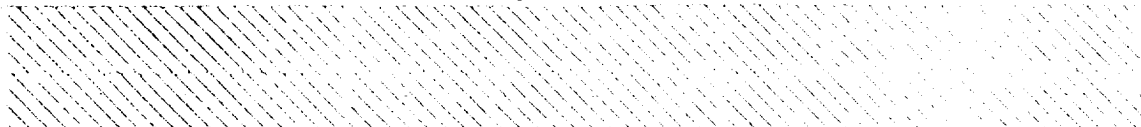
7. Unit Agreement Name

8. Name of Lease Name
Skink "SK" State

9. Well No.
1

10. Field and F.N., or Wildcat
X Undesignated Abo

11. Name
Chaves



12. Estimated depth of hole approx. 4450'	13. Est. hole name Abo	14. Est. hole type Rotary
15. Estimated hole diameter 3694.0	16. Kind of casing Blanket	17. Approx. first work will start ASAP
18. Drilling Contractor L & M Drilling Co.		

PROPOSED CASING AND CEMENT PROGRAM

SIZE OF HOLE	SIZE OF CASING	WEIGHT PER FOOT	SETTING DEPTH	PACKS OF CEMENT	EST. TOP
12 1/4"	8 5/8"	40.5# J-55	approx. 950'	630 sx	circulated
7 7/8" or 6 1/4"	4 1/2" or 5 1/2"	10.5# or 15.5#	TD	350 sx	

We propose to drill and test the Abo and intermediate formations. Approximately 950' of surface casing will be set and cement circulated to shut off gravel and casing. If needed (lost circulation) 7" intermediate casing will be run to 1500' and cemented with enough cement calculated to tie back into the surface casing. Temperature survey will be run to determine cement top. If commercial, production casing will be run and cemented with adequate cover, perforate, and stimulate as needed for production.

MUD PROGRAM: FW gel and LCM to 950', Brine to 3200', Brine & KCL water to TD. MW 10-10.2.

BOP PROGRAM: BOP's will be installed at approx. 1500' and tested daily.

GAS NOT DEDICATED.

APPROVAL VALID FOR 180 DAYS
PERMIT EXPIRES 6-23-82
UNLESS DRILLING UNDERWAY

Posted ID-1
API + NL Book
12-23-81

BOVE SPACE DESCRIBE PROPOSED PROGRAM; IF PROPOSAL IS TO DEEPEN OR PLUG BACK, GIVE DATA ON PRESENT PRODUCTIVE ZONE AND PROPOSED NEW PRODUCTIVE ZONE. GIVE BLOWOUT PREVENTER PROGRAM, IF ANY.

I hereby certify that the information above is true and complete to the best of my knowledge and belief.

by Stevenson Title Regulatory Manager Date 12/21/81

(This space for State Use)

MOVED BY Mike Williams TITLE OIL AND GAS INSPECTOR DATE DEC 23 1981

CONDITIONS OF APPROVAL, IF ANY:
Notify N.M.O.C.C. in sufficient time to witness cementing the 8 5/8" casing

NEW MEXICO OIL CONSERVATION COMMISSION
WELL LOCATION AND ACREAGE DEDICATION PLAT

Form C-102
Supersedes C-128
Effective 1-1-65

All distances must be from the outer boundaries of the Section.

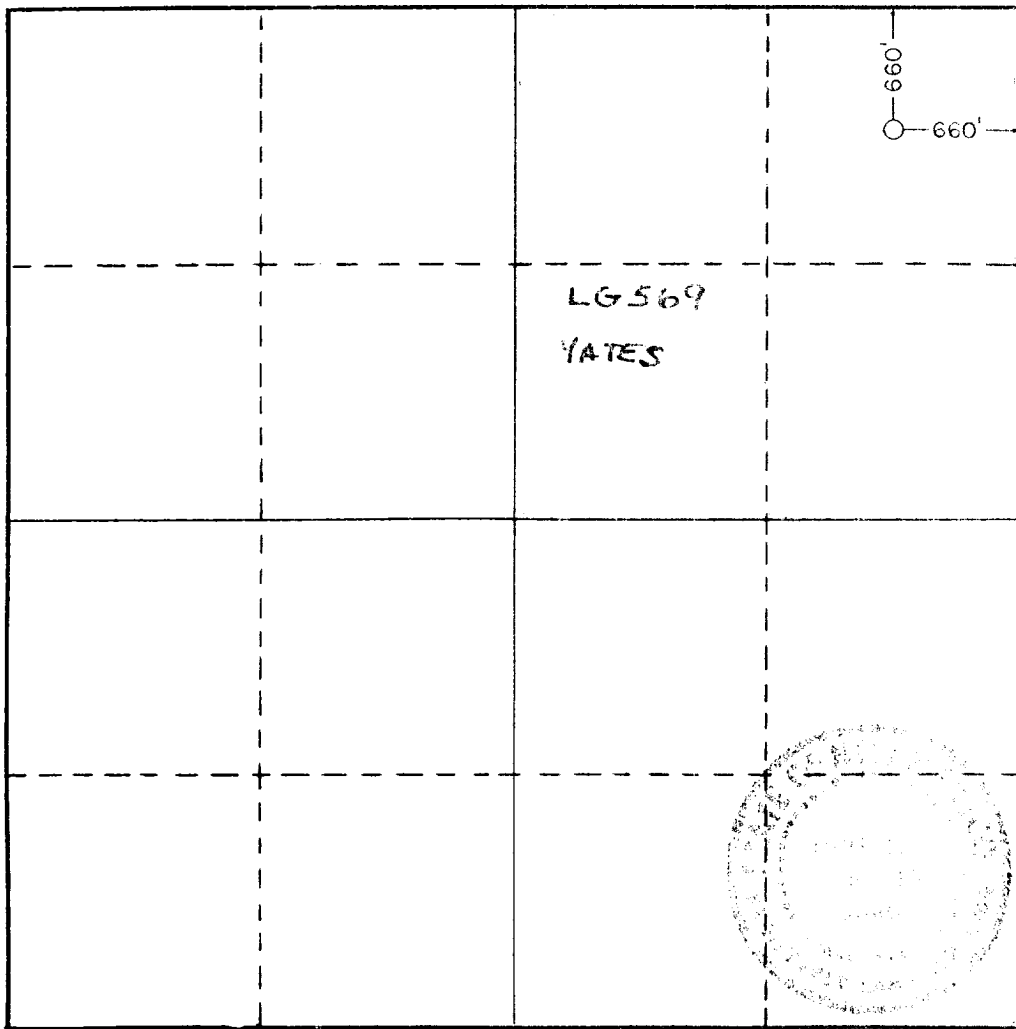
Operator YATES PETROLEUM CORP.			Lease Skink SK State			Well No. 1		
Unit Letter A	Section 32	Township 7 South	Range 26 East	County Chaves				
Actual Footage Location of Well: 660 feet from the North line and 660 feet from the East line								
Ground Level Elev. 3694.0	Producing Formation Abo		Pool Undesignated Abo			Dedicated Acreage: 160 Acres		

1. Outline the acreage dedicated to the subject well by colored pencil or hachure marks on the plat below.
2. If more than one lease is dedicated to the well, outline each and identify the ownership thereof (both as to working interest and royalty).
3. If more than one lease of different ownership is dedicated to the well, have the interests of all owners been consolidated by communitization, unitization, force-pooling, etc?

Yes No If answer is "yes," type of consolidation _____

If answer is "no," list the owners and tract descriptions which have actually been consolidated. (Use reverse side of this form if necessary.) _____

No allowable will be assigned to the well until all interests have been consolidated (by communitization, unitization, forced-pooling, or otherwise) or until a non-standard unit, eliminating such interests, has been approved by the Commission.



CERTIFICATION

I hereby certify that the information contained herein is true and complete to the best of my knowledge and belief.

Name
Gliserio Rodriguez

Position
Regulatory Manager

Company
Yates Petroleum Corporation

Date
12/15/81

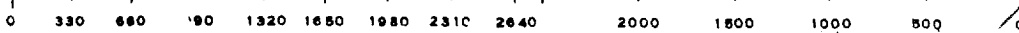
I hereby certify that the well location shown on this plat was plotted from field notes of actual surveys made by me or under my supervision, and that the same is true and correct to the best of my knowledge and belief.

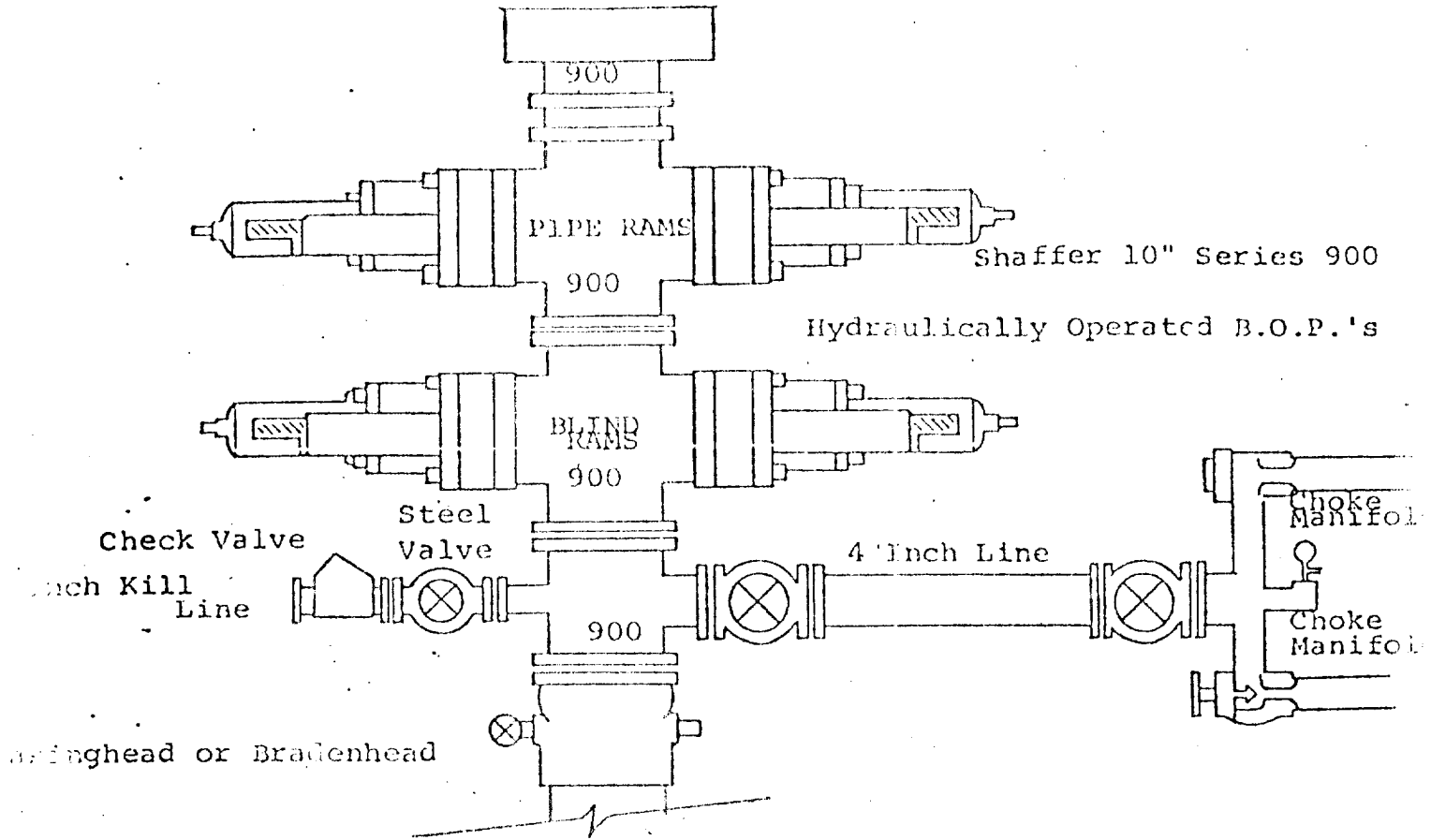
Date Surveyed
December 11, 1981

Registered Professional Engineer
and/or Land Surveyor

[Handwritten Signature]

Certificate No.
3640





FOLLOWING CONSTITUTE MINIMUM BLOWOUT PREVENTER REQUIREMENTS

1. All preventers to be hydraulically operated with secondary manual control installed prior to drilling out from under casing.
2. Choke outlet to be a minimum of 4" diameter.
3. Kill line to be of all steel construction of 2" minimum diameter.
4. All connections from operating manifolds to preventers to be all steel, hole or tube a minimum of one inch in diameter.
5. The available closing pressure shall be at least 15% in excess of that required with sufficient volume to operate the B.O.P.'s.
6. All connections to and from preventer to have a pressure rating equivalent to that of the B.O.P.'s.
7. Inside blowout preventer to be available on rig floor.
8. Operating controls located a safe distance from the rig floor.
9. Hole must be kept filled on trips below intermediate casing. Operator not responsible for blowouts resulting from not keeping hole full.
10. D. P. float must be installed and used below zone of first gas intrusion.