

NO. OF COPIES RECEIVED	
DISTRIBUTION	
SANTA FE	
FILE	
U.S.G.S.	
LAND OFFICE	
OPERATOR	

# NEW MEXICO OIL CONSERVATION COMMISSION

30-005-6/333

Form C-101  
Revised 1-1-65

5A. Indicate Type of Lease

STATE ☐ FEE ☒

5. State Oil & Gas Lease No.

## APPLICATION FOR PERMIT TO DRILL, DEEPEN, OR PLUG BACK

1a. Type of Work

DRILL ☒

DEEPEN ☐

PLUG BACK ☐

b. Type of Well

OIL WELL ☒

GAS WELL ☐

OTHER ☐

SINGLE ZONE ☐

MULTIPLE ZONE ☐

2. Name of Operator

Santa Rita Exploration Corporation

3. Address of Operator

P.O. Box 798, Artesia, New Mexico 88210

4. Location of Well

UNIT LETTER N LOCATED 990 FEET FROM THE South LINE

AND 1650 FEET FROM THE West LINE OF SEC. 7

TWP. 9S RGE. 29E NMPM

12. County  
Chaves

19. Proposed Depth  
2800'

19A. Formation  
San Andres

20. Rotary or C.T.  
Rotary (air)

21. Elevations (show whether DP, RT, etc.)

3931' GL

21A. Kind & Status Plug. Bond  
Statewide

21B. Drilling Contractor  
Yucca Drilling Co.

22. Approx. Date Work will start  
January 10, 1981

23.

### PROPOSED CASING AND CEMENT PROGRAM

SIZE OF HOLE	SIZE OF CASING	WEIGHT PER FOOT	SETTING DEPTH	SACKS OF CEMENT	EST. TOP
10 3/4"	8 5/8"	24#	150'	150 Sxs.	Surface
7 7/8"	4 1/2"	10.5#	2800'	700 Sxs.	Surface

Plan to test the San Andres formation. 8 5/8" casing will be run to approximately 150' and set with 150 Sxs. of Class C cement with 2% CaCl<sub>2</sub>. Cement will be circulated to surface. Will drill out of the 8 5/8" casing with 7 7/8" bit to approximately 2800'. If sufficient shows are encountered will then run 2800' of 4 1/2" casing and set with 700 Sxs. of 50/50 poz mix, 2% gel, and 8# salt/sx. and cement to surface. Will then log, perforate and complete well.

180 DAYS  
7-8-82  
UNDERWAY

IN ABOVE SPACE DESCRIBE PROPOSED PROGRAM: IF PROPOSAL IS TO DEEPEN OR PLUG BACK, GIVE DATA ON PRESENT PRODUCTIVE ZONE AND PROPOSED NEW PRODUCTIVE ZONE. GIVE BLOWOUT PREVENTER PROGRAM, IF ANY.

I hereby certify that the information above is true and complete to the best of my knowledge and belief.

Signed Donald R Cray Title Vice-President of Operations Date 12/15/81

(This space for State Use)

APPROVED BY Mike Williams TITLE State Engineer DATE 12/15/81

CONDITIONS OF APPROVAL, IF ANY:

All distances must be from the outer boundaries of the Section.

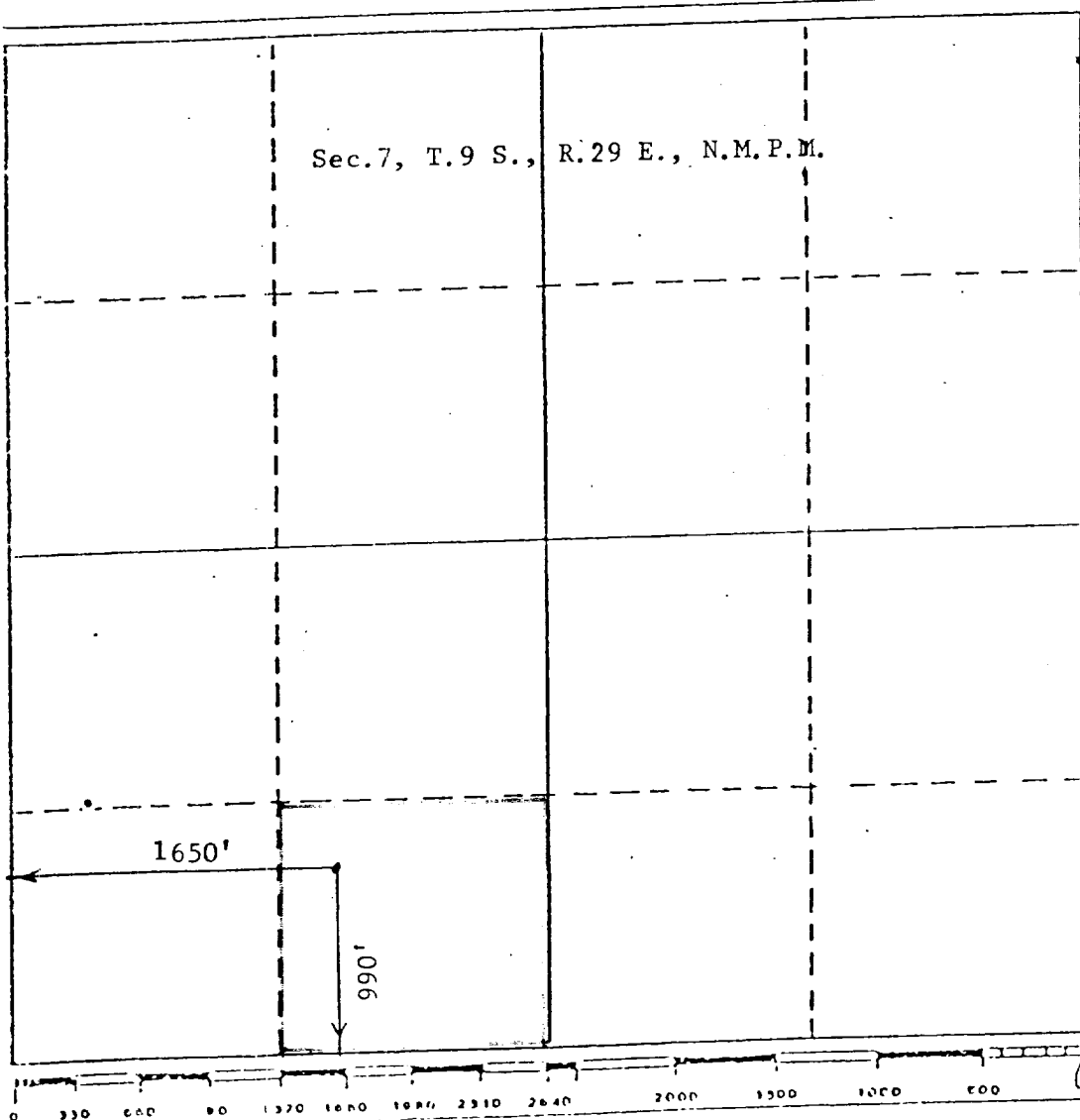
Operator Santa Rita Exploration		Lease Moonshine 7		Well No. #8
Well Letter N	Section 7	Township 9 South	Range 29 East	County Chaves
Actual Postage Location of Well: 990 feet from the South line and 1650 feet from the West line				
Ground Level Elev. 3931	Producing Formation San Andres	Pool Twin Lakes San Andres Assoc.	Dedicated Acreage: 40 Acres	

- Outline the acreage dedicated to the subject well by colored pencil or hachure marks on the plat below.
- If more than one lease is dedicated to the well, outline each and identify the ownership thereof (both as to working interest and royalty). Moon Co. Trust (3/4) Donald Winston (1/32) J. Wyman & Winston (1/64) Charles Kelly (1/128) Pauline Parker (1/64) J.T. Wyman (1/64) Marshall & Winston (1/32) Murry McKinnon (1/128) Tenneco Oil Co. (1/8)
- If more than one lease of different ownership is dedicated to the well, have the interests of all owners been consolidated by communitization, unitization, force-pooling, etc?

☐ Yes ☐ No If answer is "yes," type of consolidation \_\_\_\_\_

If answer is "no," list the owners and tract descriptions which have actually been consolidated. (Use reverse side of this form if necessary.) \_\_\_\_\_

No allowable will be assigned to the well until all interests have been consolidated (by communitization, unitization, forced-pooling, or otherwise) or until a non-standard unit, eliminating such interests, has been approved by the Division.



### CERTIFICATION

I hereby certify that the information contained herein is true and complete to the best of my knowledge and belief.

*Donald R. Craig*  
Name

Donald R. Craig

Position  
Vice-President

Company  
Santa Rita Exploration Corp.

Date  
12/30/81

I hereby certify that the well location shown on this plat was plotted from field notes of actual surveys made by me or under my supervision, and that the same is true and correct to the best of my knowledge and belief.

**JOHN D. JAQUES**  
NEW MEXICO  
Date Surveyed December 25, 1981  
Registered Professional Engineer and/or Licensed Surveyor  
John D. Jaques, P.E. & L.S.  
Certificate No. 6290

