

NO. OF COPIES RECEIVED	
DISTRIBUTION	
SANTA FE	1
FILE	1
U.S.G.S.	1
LAND OFFICE	1
OPERATOR	1

JAN 6 1982

O. C. D.
ARTESIA, OFFICE

5A. Indicate Type of Lease STATE <input checked="" type="checkbox"/> FEE <input type="checkbox"/>
5. State Oil & Gas Lease No. LG-4888
7. Unit Agreement Name
8. Farm or Lease Name Skinny "QO" State
9. Well No. 4
10. Field and Pool, or Wildcat X Undesignated Abo
12. County Chaves
19. Proposed Depth App. 4350'
19A. Formation Abo
20. Rotary or C.T. Rotary
21A. Kind & Status Plug. Bond Blanket
21B. Drilling Contractor L&M Drilling Co.
22. Approx. Date Work will start ASAP

APPLICATION FOR PERMIT TO DRILL, DEEPEN, OR PLUG BACK

Type of Work
Type of Well DRILL ☒ DEEPEN ☐ PLUG BACK ☐
OIL WELL ☐ GAS WELL ☒ OTHER ☐ SINGLE ZONE ☐ MULTIPLE ZONE ☐
Name of Operator
Yates Petroleum Corporation ✓
Address of Operator
207 South 4th Street, Artesia, New Mexico 88210
Location of Well
UNIT LETTER G LOCATED 1980 FEET FROM THE North LINE
1980 FEET FROM THE East LINE OF SEC. 16 TWP. 6S RGE. 25E NMPM
Elevation of Spud (whether DE, RT, etc.)
3991.7 GL
21A. Kind & Status Plug. Bond
Blanket
21B. Drilling Contractor
L&M Drilling Co.
22. Approx. Date Work will start
ASAP

PROPOSED CASING AND CEMENT PROGRAM

SIZE OF HOLE	SIZE OF CASING	WEIGHT PER FOOT	SETTING DEPTH	SACKS OF CEMENT	EST. TOP
12 1/4"	8 5/8"	24# J-55	app. 925'	620 sx.	circulated
7 7/8" or 6 1/2"	4 1/2"	10.5#	TD	350 sx.	

We propose to drill and test the Abo and intermediate formations. Approximately 925' of surface casing will be set and cement circulated to shut off gravel and caving. If needed (lost circulation) 7" intermediate casing will be run to 1500' and cemented with enough cement calculated to tie back into the surface casing. Temperature survey will be run to determine cement top. If commercial, production casing will be run and cemented with adequate cover, perforate, and stimulate as needed for production.

MUD PROGRAM: FW gel and LCM to 925', Brine to 3200', Brine & KCL water to TD.

BOP PROGRAM: BOP's will be installed at time of spud and tested daily.

GAS NOT DEDICATED.

APPROVAL VALID FOR 180 DAYS
PERMIT EXPIRES 7-8-82
UNLESS DRILLING UNDERWAY

BELOW SPACE DESCRIBE PROPOSED PROGRAM: IF PROPOSAL IS TO DEEPEN OR PLUG BACK, GIVE DATA ON PRESENT PRODUCTIVE ZONE AND PROPOSED NEW PRODUCTIVE ZONE. GIVE BLOWOUT PREVENTER PROGRAM, IF ANY.

I hereby certify that the information above is true and complete to the best of my knowledge and belief.

by Glenn Rodriguez Title Regulatory Manager Date 1/5/82
(This space for State Use)

APPROVED BY Mike Williams TITLE OIL AND GAS INSPECTOR DATE JAN 8 1982
CONDITIONS OF APPROVAL, IF ANY:

Posted ID-1
API + NL Book
1-8-82

NEW MEXICO OIL CONSERVATION COMMISSION
WELL LOCATION AND ACREAGE DEDICATION PLAT

Form C-102
Supersedes C-128
Effective 1-1-65

All distances must be from the outer boundaries of the Section.

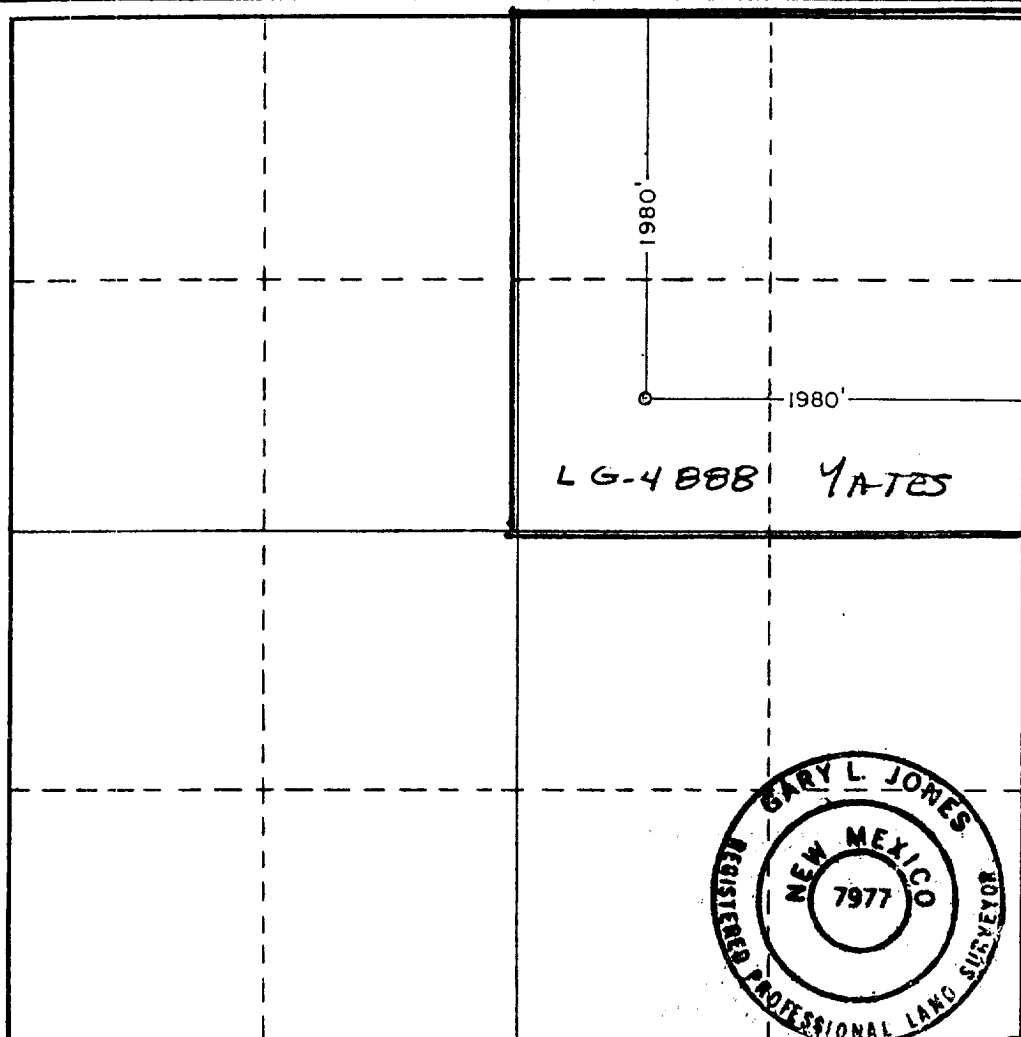
Operator YATES PETROLEUM CORPORATION			Lease Skinny 00 State		Well No. 4
Unit Letter G	Section 16	Township 6 South	Range 25 East	County Chaves	
Actual Footage Location of Well: 1980 feet from the North line and 1980 feet from the East line					
Ground Level Elev. 3991.7	Producing Formation Abo		Pool Undesignated Abo		Dedicated Acreage: 160 Acres

1. Outline the acreage dedicated to the subject well by colored pencil or hachure marks on the plat below.
2. If more than one lease is dedicated to the well, outline each and identify the ownership thereof (both as to working interest and royalty).
3. If more than one lease of different ownership is dedicated to the well, have the interests of all owners been consolidated by communitization, unitization, force-pooling, etc?

☐ Yes ☐ No If answer is "yes," type of consolidation _____

If answer is "no," list the owners and tract descriptions which have actually been consolidated. (Use reverse side of this form if necessary.) _____

No allowable will be assigned to the well until all interests have been consolidated (by communitization, unitization, forced-pooling, or otherwise) or until a non-standard unit, eliminating such interests, has been approved by the Commission.



CERTIFICATION

I hereby certify that the information contained herein is true and complete to the best of my knowledge and belief.

Gliserio Rodriguez
Name

Gliserio Rodriguez

Position

Regulatory Manager

Company

Yates Petroleum Corporation

Date

1/4/82

I hereby certify that the well location shown on this plat was plotted from field notes of actual surveys made by me or under my supervision, and that the same is true and correct to the best of my knowledge and belief.

Date Surveyed

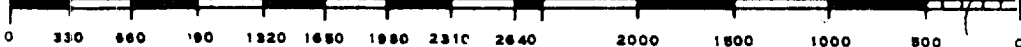
12-23-81

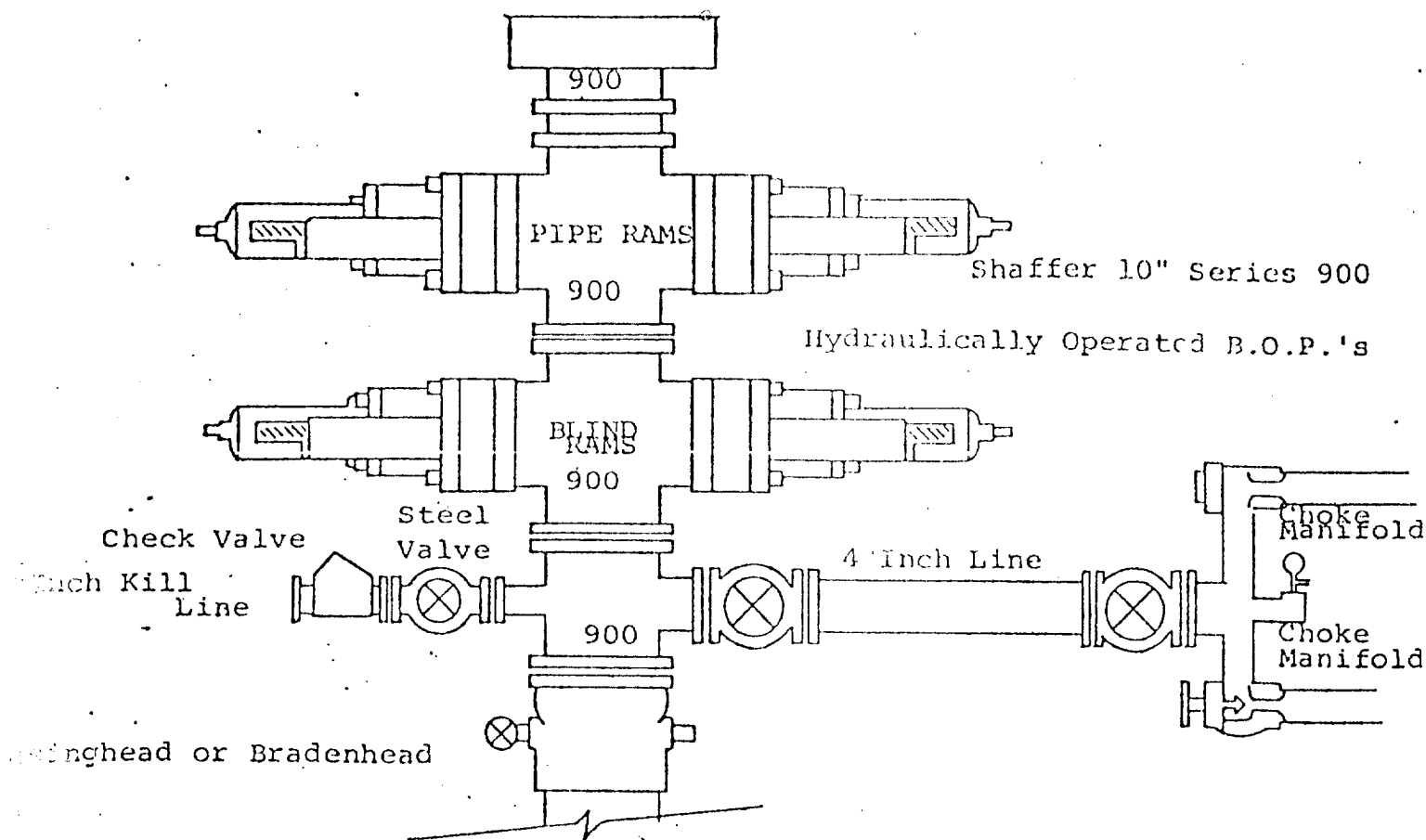
Registered Professional Engineer and/or Land Surveyor

Sam E. Jones

Certificate No.

7977





THE FOLLOWING CONSTITUTE MINIMUM BLOWOUT PREVENTER REQUIREMENTS

1. All preventers to be hydraulically operated with secondary manual controls installed prior to drilling out from under casing.
2. Choke outlet to be a minimum of 4" diameter.
3. Kill line to be of all steel construction of 2" minimum diameter.
4. All connections from operating manifolds to preventers to be all steel. hole or tube a minimum of one inch in diameter.
5. The available closing pressure shall be at least 15% in excess of that required with sufficient volume to operate the B.O.P.'s.
6. All connections to and from preventer to have a pressure rating equivalent to that of the B.O.P.'s.
7. Inside blowout preventer to be available on rig floor.
8. Operating controls located a safe distance from the rig floor.
9. Hole must be kept filled on trips below intermediate casing. Operator not responsible for blowouts resulting from not keeping hole full.
10. D. P. float must be installed and used below zone of first gas intrusion.