

UNITED STATES
DEPARTMENT OF THE INTERIOR

GEOLOGICAL SURVEY

5. LEASE DESIGNATION AND SERIAL NO.

NM 9539

6. IF INDIAN, ALLOTTEE OR TRIBE NAME

7. UNIT AGREEMENT NAME

8. FARM OR LEASE NAME

Williamson LC Federal

9. WELL NO.

4

10. FIELD AND POOL, OR WILDCAT

Wildcat Und. T. 1/2

11. SEC., T., R., M., OR BLK.
AND SURVEY OR AREA4th M
Sec. 9-T8S-R25E

12. COUNTY OR PARISH

Chaves

13. STATE

NM

1a. TYPE OF WORK

DRILL ☒DEEPEN ☐PLUG BACK ☐

b. TYPE OF WELL

OIL
WELL ☐GAS
WELL ☒

OTHER

SINGLE
ZONE ☐MULTIPLE
ZONE ☐

2. NAME OF OPERATOR

Yates Petroleum Corporation

3. ADDRESS OF OPERATOR

207 S. 4th, Artesia, New Mexico 88210

4. LOCATION OF WELL (Report location clearly and in accordance with any State requirements.)

At surface

860' FSL & 660' FWL

At proposed prod. zone

14. DISTANCE IN MILES AND DIRECTION FROM NEAREST TOWN OR POST OFFICE*

18 miles NNE of Roswell, NM

15. DISTANCE FROM PROPOSED*

LOCATION TO NEAREST

PROPERTY OR LEASE LINE, FT.

(Also to nearest drlg. unit line, if any)

660'

16. NO. OF ACRES IN LEASE

1480

17. NO. OF ACRES ASSIGNED

TO THIS WELL

160

18. DISTANCE FROM PROPOSED LOCATION*

TO NEAREST WELL, DRILLING, COMPLETED,
OR APPLIED FOR, ON THIS LEASE, FT.

19. PROPOSED DEPTH

4100'

20. ROTARY OR CABLE TOOLS

Rotary

21. ELEVATIONS (Show whether DF, RT, GR, etc.)

3649.5 GL

22. APPROX. DATE WORK WILL START*

ASAP

23.

PROPOSED CASING AND CEMENTING PROGRAM

SIZE OF HOLE	SIZE OF CASING	WEIGHT PER FOOT	SETTING DEPTH	QUANTITY OF CEMENT
15"	10 3/4"	48# J-55	980'	300 sx circulate
6 1/4"	4 1/2"	15.5# or 10.5#	TD	450 sx

We propose to drill and test the Abo and intermediate formations. Approximately 980' of surface casing will be set and cement circulated to shut off gravel and caving. If needed (lost circulation), 8 5/8" intermediate casing will be run to 1500' and cement circulated. If commercial, production casing will be run and cemented with adequate cover, perforate and stimulate as needed for production.

MUD PROGRAM: FW gel and LCM to 1500', brine to 3500', Brine & KCL to TD.
MW 10-10.2.

BOP PROGRAM: BOP's will be installed at the offset and tested daily.

GAS NOT DEDICATED.

IN ABOVE SPACE DESCRIBE PROPOSED PROGRAM: If proposal is to deepen or plug back, give data on present productive zone and proposed new productive zone. If proposal is to drill or deepen directionally, give pertinent data on subsurface locations and measured and true vertical depths. Give blowout preventer program, if any.

24.

SIGNED

TITLE Regulatory Manager

DATE 2/8/82

(This space for Federal or State office use)

PERMIT NO.

APPROVED

APPROVED BY

CONDITIONS OF APPROVAL, IF ANY

FEB 22 1982

JAMES A. GILLHAM
DISTRICT SUPERVISOR

APPROVAL DATE

TITLE

APPROVAL SUBJECT TO
GENERAL REQUIREMENTS AND
SPECIAL STIPULATIONS
ATTACHED

DATE

Posted ID-1
API + NL Book
2-26-82

MEXICO OIL CONSERVATION COMMISSION
WELL LOCATION AND ACREAGE DEDICATION PLAT

Form C-102
 Supersedes C-128
 Effective 1-1-65

All distances must be from the outer boundaries of the Section.

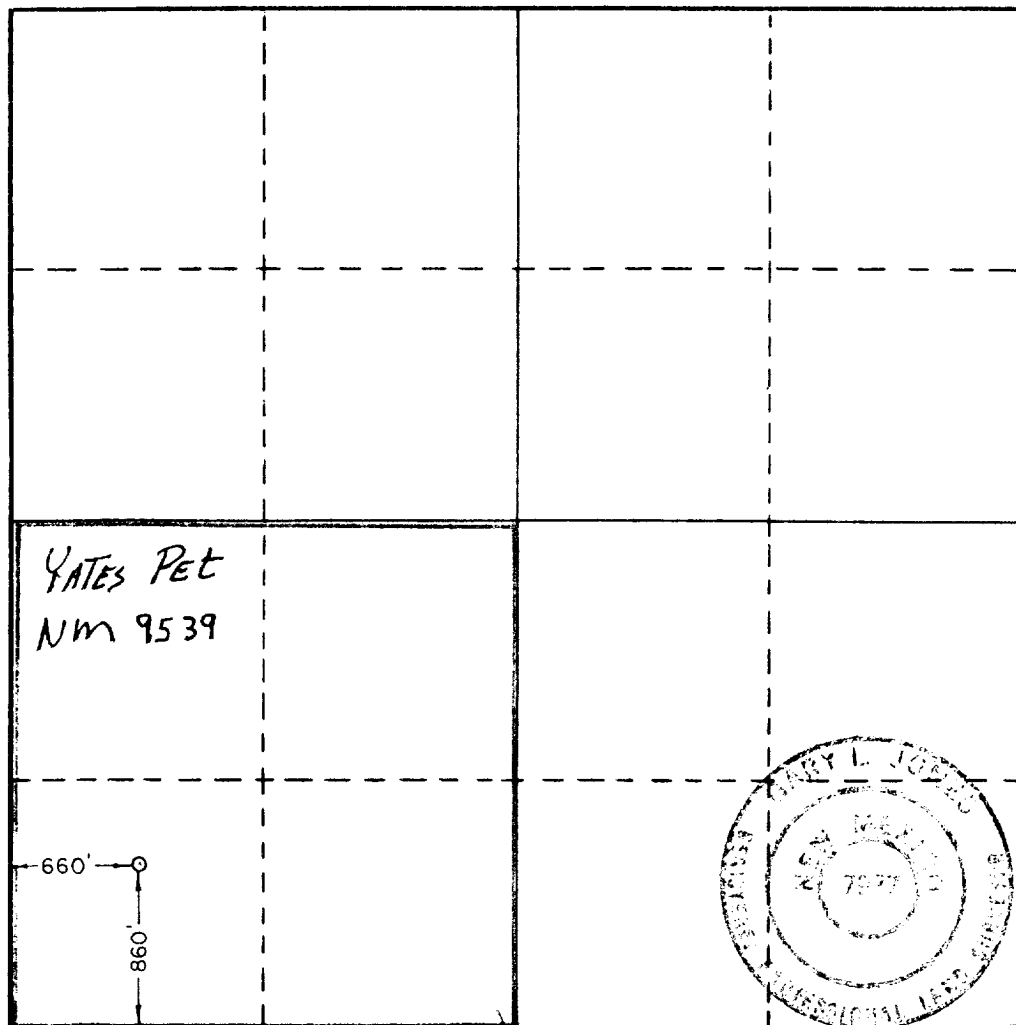
Operator YATES PETROLEUM CORPORATION			Lease Williamson LC Federal		Well No. 4
Unit Letter M	Section 9	Township 8 South	Range 25 East	County Chaves	
Actual Footage Location of Well: 860 feet from the South line and 660 feet from the West line					
Ground Level Elev. 3649.5'	Producing Formation ABO		Pool UNDES ABO		Dedicated Acreage: 160 Acres

1. Outline the acreage dedicated to the subject well by colored pencil or hachure marks on the plat below.
2. If more than one lease is dedicated to the well, outline each and identify the ownership thereof (both as to working interest and royalty).
3. If more than one lease of different ownership is dedicated to the well, have the interests of all owners been consolidated by communitization, unitization, force-pooling, etc?

☐ Yes ☐ No If answer is "yes," type of consolidation _____

If answer is "no," list the owners and tract descriptions which have actually been consolidated. (Use reverse side of this form if necessary.) _____

No allowable will be assigned to the well until all interests have been consolidated (by communitization, unitization, forced-pooling, or otherwise) or until a non-standard unit, eliminating such interests, has been approved by the Commission.



CERTIFICATION

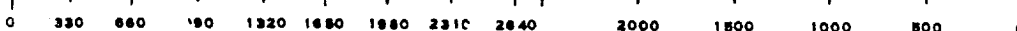
I hereby certify that the information contained herein is true and complete to the best of my knowledge and belief.

Cy Cowan
 Name
Cy Cowan
 Position
Reg Coordinator
 Company
Yates Petroleum Corp
 Date
2-4-82

I hereby certify that the well location shown on this plat was plotted from field notes of actual surveys made by me or under my supervision, and that the same is true and correct to the best of my knowledge and belief.

Date Surveyed
2/2/82
 Registered Professional Engineer and/or Land Surveyor

Certificate No.
7977



Yates Petroleum Corporation
Williamson "LC" Federal #4
860' FSL and 660' FWL
Section 9-T8S-R25E
Chaves County, New Mexico

In conjunction with Form 9-331C, Application for Permit to Drill subject well, Yates Petroleum Corporation submits the following ten items of pertinent information in accordance with USGS requirements:

1. The geological surface formation is sandy alluvium.
2. The estimated tops of geologic markers area as follows:

San Andres	450'
Glorieta	1450'
Fullerton	2870'
Abo	3540'
TD	4100'
3. The estimated depths at which anticipated water, oil or gas formations are expected to be encountered:

Water: Approximately 260' - 330'.

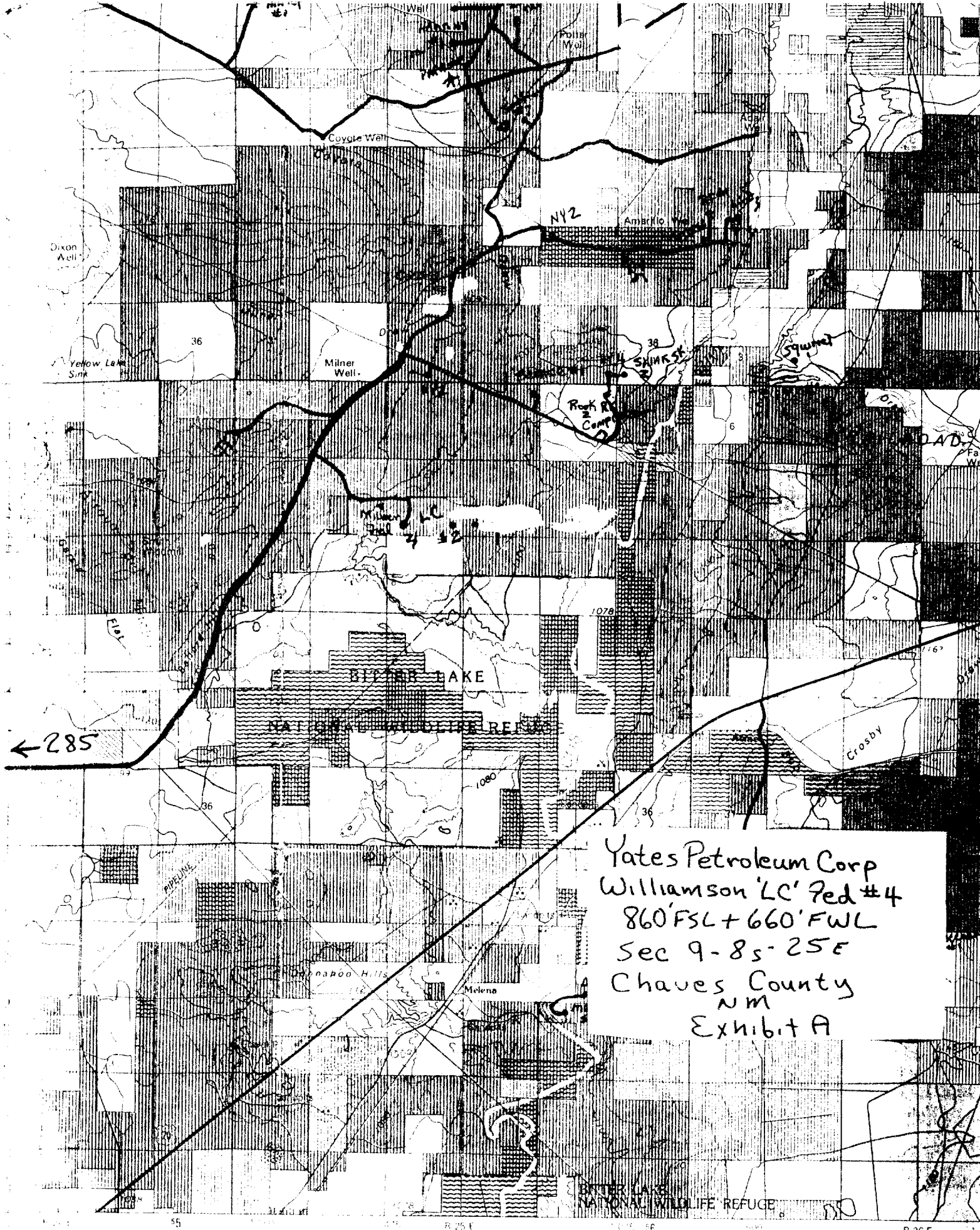
Oil or Gas: Abo 3500'
4. Proposed Casing Program: See Form 9-331C.
5. Pressure Control Equipment: See Form 9-331C and Exhibit B.
6. Mud Program: See Form 9-331C.
7. Auxiliary Equipment: Kelly Cock, pit level indicators and flow sensor equipment; sub with full-opening valve on floor, drill pipe connection.
8. Testing, Logging and Coring Program:

Samples: Surface casing to TD.

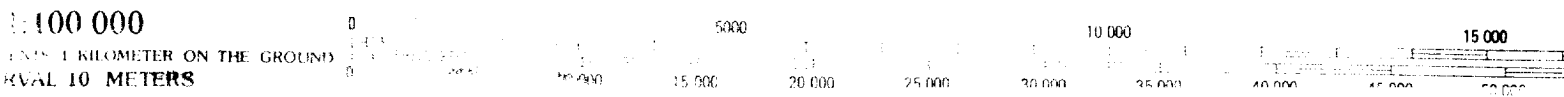
DST's: As warranted

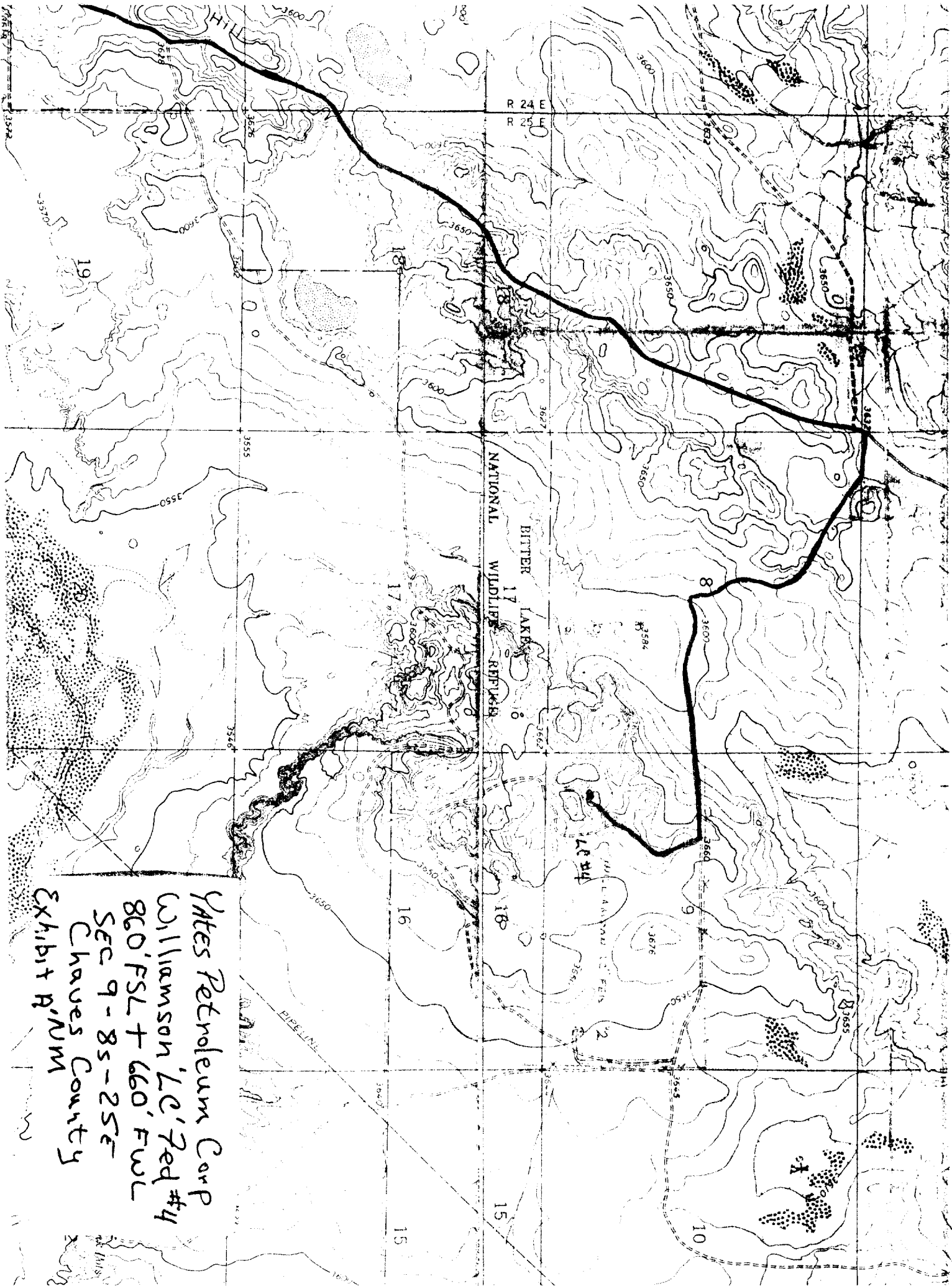
Logging: Surface casing to TD, CNL-FDC TD to casing with GR-CNL on to surface and DLL from TD to casing with R O.

Coring: None anticipated.
9. No abnormal pressures or temperatures are anticipated.
10. Anticipated starting date: As soon as possible after approval.



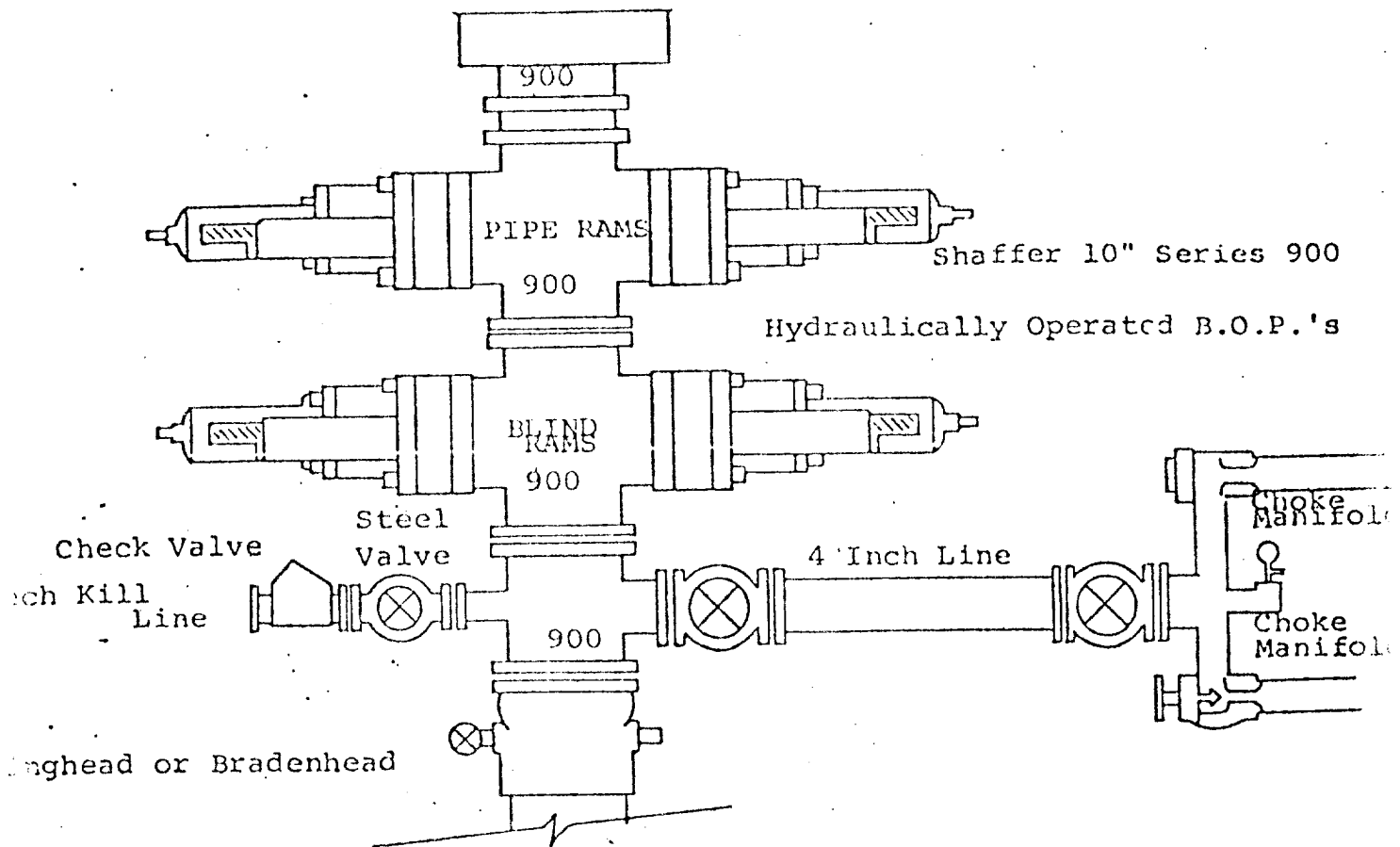
Yates Petroleum Corp
Williamson 'LC' Fed #4
860' FSL + 660' FWL
Sec 9-8s-25E
Chaves County
NM
Exhibit A





Yates Petroleum Corp
Williamson LC #7ed #4
860' FSL + 660' FWL
SEC 9 - 8S - 25E
Chaves County
Exhibit A'NM

Exhibit B



FOLLOWING CONSTITUTE MINIMUM BLOWOUT PREVENTER REQUIREMENTS

1. All preventers to be hydraulically operated with secondary manual control installed prior to drilling out from under casing.
2. Choke outlet to be a minimum of 4" diameter.
3. Kill line to be of all steel construction of 2" minimum diameter.
4. All connections from operating manifolds to preventers to be all steel.
5. hole or tube a minimum of one inch in diameter.
6. The available closing pressure shall be at least 15% in excess of that required with sufficient volume to operate the B.O.P.'s.
7. All connections to and from preventer to have a pressure rating equivalent to that of the B.O.P.'s.
8. Inside blowout preventer to be available on rig floor.
9. Operating controls located a safe distance from the rig floor.
10. Hole must be kept filled on trips below intermediate casing. Operator not responsible for blowouts resulting from not keeping hole full.
11. D. P. float must be installed and used below zone of first gas intrusion.