

RECEIVED

30-005-61487  
Form C-101  
Revised 10-1-78

NO. OF COPIES RECEIVED	
DISTRIBUTION	
SANTA FE	1
FILL	1
U.S.G.S.	2
LAND OFFICE	1
OPERATOR	1

MAR 18 1982

O. C. D.

ARTESIA, OFFICE

5A. Indicate Type of Lease

STATE ☒ FEE ☐

5. State Oil & Gas Lease No.

LG-250

APPLICATION FOR PERMIT TO DRILL, DEEPEN, OR PLUG BACK

a. Type of Work

DRILL ☒

DEEPEN ☐

PLUG BACK ☐

b. Type of Well

OIL WELL ☐

GAS WELL ☒

OTHER

SINGLE ZONE ☐

MULTIPLE ZONE ☐

c. Name of Operator

Yates Petroleum Corporation

d. Address of Operator

207 S. 4th, Artesia, New Mexico 88210

e. Location of Well

UNIT LETTER G LOCATED 1980 FEET FROM THE North LINE

AND 1980 FEET FROM THE East LINE OF SEC. 36 TWP. 4S RGE. 24E NMRM

7. Unit Agreement Name

8. Farm or Lease Name

Margaret "RQ" State

9. Well No.

2

10. Field and Pool, or Wildcat

X Pecos Slope Abo

12. County

Chaves

19. Proposed Depth

4250'

19A. Formation

Abo

20. Rotary or C.T.

Rotary

1. Elevation (show whether Dr, K1, etc.)

3938.2

21A. Kind & Status Plug. Bond

Blanket

21B. Drilling Contractor

LaRue Drilling

22. Approx. Date Work will start

ASAP

3.

PROPOSED CASING AND CEMENT PROGRAM

SIZE OF HOLE	SIZE OF CASING	WEIGHT PER FOOT	SETTING DEPTH	SACKS OF CEMENT	EST. TOP
14 3/4"	10 3/4"	40.5# J-55	approx. 925'	875 sx	circulated
7 7/8"	4 1/2"	9.5#	TD	350 sx	

We propose to drill and test the Abo and intermediate formations. Approximately 925' of surface casing will be set and cement circulated to shut off gravel and caving. If needed (lost circulation) 8 5/8" intermediate casing will be run to 1500' and cemented with enough cement calculated to tie back into the surface casing. If commercial, production casing will be run and cemented with adequate cover, perforate, and stimulate as needed for production.

MUD PROGRAM: FW gel and LCM to 925', Brine to 3300', Drispak, starch, and flosal to TD.

BOP PROGRAM: BOP's will be installed on 8 5/8" casing and tested daily.

GAS NOT DEDICATED.

APPROVAL VALID FOR 180 DAYS  
PERMIT EXPIRES 9-19-82  
UNLESS DRILLING UNDERWAY

ABOVE SPACE DESCRIBE PROPOSED PROGRAM; IF PROPOSAL IS TO DEEPEN OR PLUG BACK, GIVE DATA ON PRESENT PRODUCTIVE ZONE AND PROPOSED NEW PRODUCTIVE ZONE. GIVE BLOWOUT PREVENTER PROGRAM, IF ANY.

I hereby certify that the information above is true and complete to the best of my knowledge and belief.

Signed \_\_\_\_\_ Title Regulatory Coordinator Date 3/16/82

(This space for State Use)

APPROVED BY M. W. W. W. TITLE OIL AND GAS INSPECTOR

DATE MAR 19 1982

CONDITIONS OF APPROVAL, IF ANY:

NEW MEXICO OIL CONSERVATION COMMISSION  
WELL LOCATION AND ACREAGE DEDICATION PLAT

Form C-102  
Supersedes C-128  
Effective 1-1-65

All distances must be from the outer boundaries of the Section.

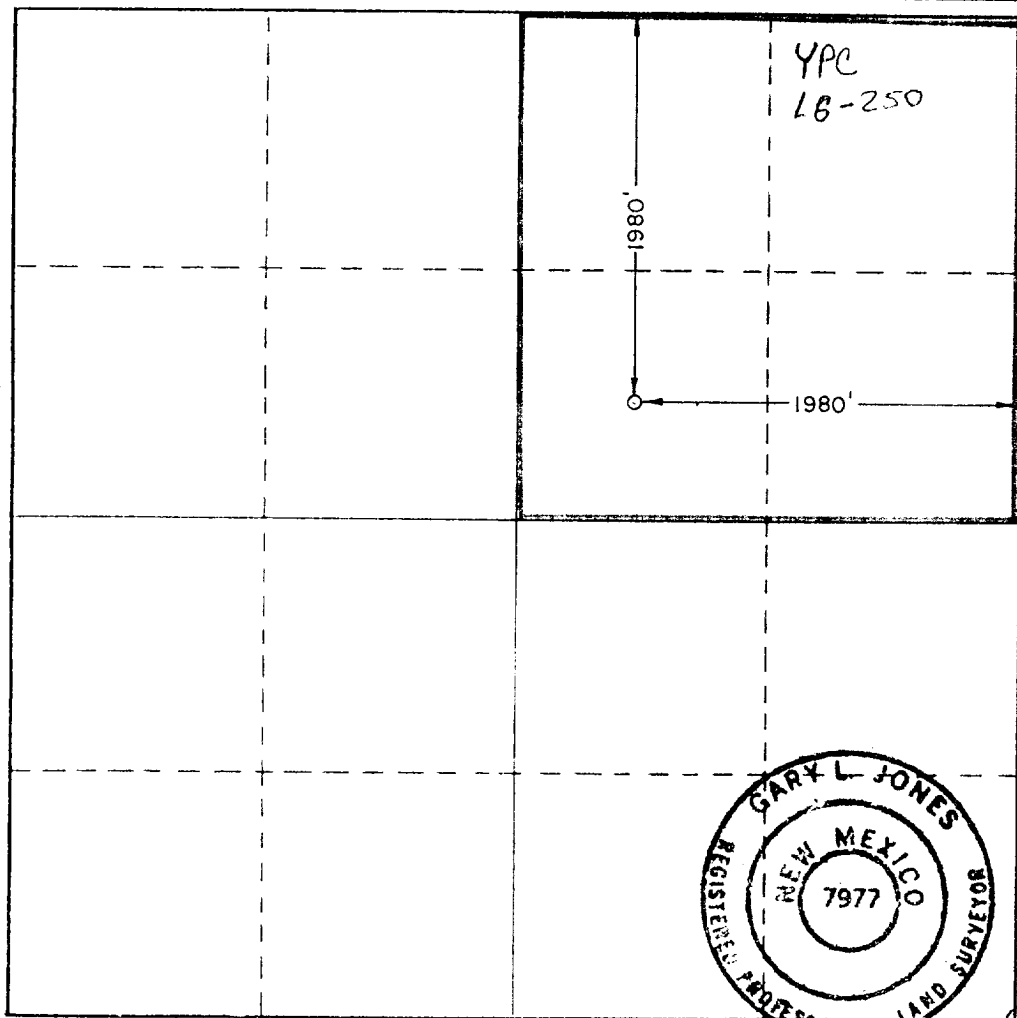
Operator <b>YATES PETROLEUM CORPORATION</b>			Lease <b>Margaret "RQ" State</b>		Well No. <b>2</b>
Unit Letter <b>G</b>	Section <b>36</b>	Township <b>4 South</b>	Range <b>24 East</b>	County <b>Chaves</b>	
Actual Footage Location of Well:					
<b>1980</b> feet from the <b>North</b> line and		<b>1980</b> feet from the <b>East</b> line			
Ground Level Elev. <b>3938.2'</b>	Producing Formation <b>ABO</b>	Pool <b>Peecos Abo Slope</b>	Dedicated Acreage: <b>160</b> Acres		

- Outline the acreage dedicated to the subject well by colored pencil or hachure marks on the plat below.
- If more than one lease is dedicated to the well, outline each and identify the ownership thereof (both as to working interest and royalty).
- If more than one lease of different ownership is dedicated to the well, have the interests of all owners been consolidated by communitization, unitization, force-pooling, etc?

☐ Yes ☐ No If answer is "yes," type of consolidation \_\_\_\_\_

If answer is "no," list the owners and tract descriptions which have actually been consolidated. (Use reverse side of this form if necessary.) \_\_\_\_\_

No allowable will be assigned to the well until all interests have been consolidated (by communitization, unitization, forced-pooling, or otherwise) or until a non-standard unit, eliminating such interests, has been approved by the Commission.



CERTIFICATION

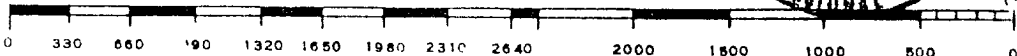
I hereby certify that the information contained herein is true and complete to the best of my knowledge and belief.

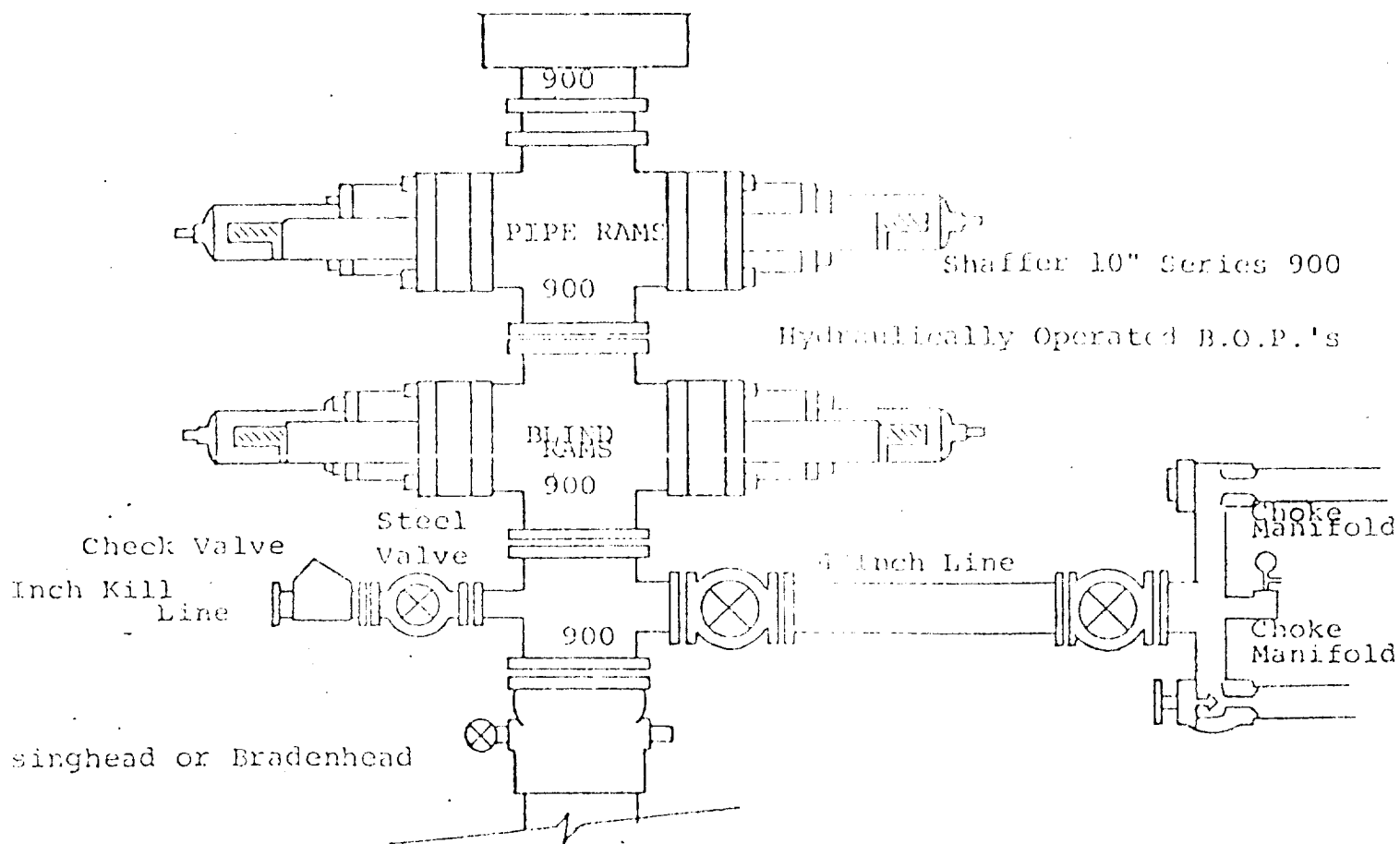
*Cy Cowan*  
Name  
Cy Cowan  
Position  
Regulatory Coordinator  
Company  
Yates Petroleum Corporation  
Date  
3/18/82

I hereby certify that the well location shown on this plat was plotted from field notes of actual surveys made by me or under my supervision, and that the same is true and correct to the best of my knowledge and belief.

Date Surveyed  
March 17, 1982  
Registered Professional Engineer  
and/or Land Surveyor

*Garx L. Jones*  
Certificate No.  
7977





#### THE FOLLOWING CONSTITUTE MINIMUM BLOWOUT PREVENTER REQUIREMENTS

- All preventers to be hydraulically operated with secondary manual controls installed prior to drilling out from under casing.
- Choke outlet to be a minimum of 4" diameter.
- Kill line to be of all steel construction of 2" minimum diameter.
- All connections from operating manifolds to preventers to be all steel, hole or tube a minimum of one inch in diameter.
- The available closing pressure shall be at least 15% in excess of that required with sufficient volume to operate the B.O.P.'s.
- All connections to and from preventer to have a pressure rating equivalent to that of the B.O.P.'s.
- Inside blowout preventer to be available on rig floor.
- Operating controls located a safe distance from the rig floor.
- Hole must be kept filled on trips below intermediate casing. Operator not responsible for blowouts resulting from not keeping hole full.
- B. P. float must be installed and used below zone of first gas intrusion.