

**NM OIL CONS. COMMISSION UNITED STATES**  
**DEPARTMENT OF THE INTERIOR**  
**ARTESIA, NM 88210 GEOLOGICAL SURVEY**

SUBMIT IN DUPLICATE  
(Other ins. on reverse)

Form approved.  
Budget Bureau No. 42-R1425.

30-005-61687

**APPLICATION FOR PERMIT TO DRILL, DEEPEN, OR PLUG BACK**

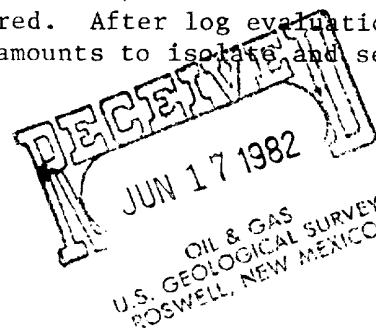
1a. TYPE OF WORK <b>DRILL</b> <input checked="" type="checkbox"/> <b>DEEPEN</b> <input type="checkbox"/> <b>PLUG BACK</b> <input type="checkbox"/>			5. LEASE DESIGNATION AND SERIAL NO. NM-36709		
b. TYPE OF WELL OIL WELL <input type="checkbox"/> GAS WELL <input checked="" type="checkbox"/> OTHER <input type="checkbox"/> SINGLE ZONE <input checked="" type="checkbox"/> MULTIPLE <input type="checkbox"/>			6. IF INDIAN, ALLOTTEE OR TRIBE NAME		
2. NAME OF OPERATOR MESA PETROLEUM CO.			7. UNIT AGREEMENT NAME		
3. ADDRESS OF OPERATOR 1000 VAUGHN BUILDING/MIDLAND, TEXAS 79701-4493			8. FARM OR LEASE NAME BILL FEDERAL		
4. LOCATION OF WELL (Report location clearly and in accordance with any State requirements.) At surface 760' FNL & 1980' FEL NW 1/4 NE 1/4 B At proposed prod. zone SAME			9. WELL NO. 1		
14. DISTANCE IN MILES AND DIRECTION FROM NEAREST TOWN OR POST OFFICE* 24 miles Northwest of Roswell, New Mexico			10. FIELD AND POOL, OR WILDCAT X WILDCAT ABO		
18. DISTANCE FROM PROPOSED LOCATION* TO NEAREST WELL, DRILLING, COMPLETED, OR APPLIED FOR, ON THIS LEASE, FT. N/A			11. SEC., T., R., M., OR BLK. AND SURVEY OR AREA SEC 35, T7S, R22E		
19. PROPOSED DEPTH 3400'			12. COUNTY OR PARISH CHAVES		
20. ROTARY OR CABLE TOOLS ROTARY			13. STATE NEW MEXICO		
21. ELEVATIONS (Show whether DF, RT, GR, etc.) 4265' GR			22. APPROX. DATE WORK WILL START* JULY 13, 1982		

**PROPOSED CASING AND CEMENTING PROGRAM**

SIZE OF HOLE	SIZE OF CASING	WEIGHT PER FOOT	SETTING DEPTH	QUANTITY OF CEMENT
12 1/4"	8 5/8"	24#	1400'	700/300 SURFACE
7 7/8"	4 1/2"	10.5#	3400'	300 COVER ALL PAY

Propose to drill 12 1/4" hole to approximately 1400' to set 8 5/8" surface casing and cement to surface. Will nipple up ram type BOP's and reduce hole to 7 7/8" to drill to total depth. Drilling medium will be air, foam, or mud as required. After log evaluation, 4 1/2" casing may be run and cemented with sufficient kinds and amounts to isolate and seal off any fresh water, oil or gas zones encountered.

Operator's Gas Sales are dedicated.



XC: MMS (7), TLS, CEN RCDS, ACCTG, MEC, LAND, ROSWELL, REM, FILE, (PARTNERS )  
IN ABOVE SPACE DESCRIBE PROPOSED PROGRAM: If proposal is to deepen or plug back, give data on present productive zone and proposed new productive zone. If proposal is to drill or deepen directionally, give pertinent data on subsurface locations and measured and true vertical depths. Give blowout preventer program, if any.

24. SIGNED R. E. Nash TITLE REGULATORY COORDINATOR DATE 6-16-82

(This space for Federal or State use)

PERMIT NO. (Orig. Sgd.) GEORGE H. STEWART APPROVAL DATE JUL 1 1982

APPROVED BY JAMES A. CILHAM DISTRICT SUPERVISOR

\*See Instructions On Reverse Side

Partial ID-1  
APT & NL Book  
7-9-82

All distances must be from the outer boundaries of the Section.

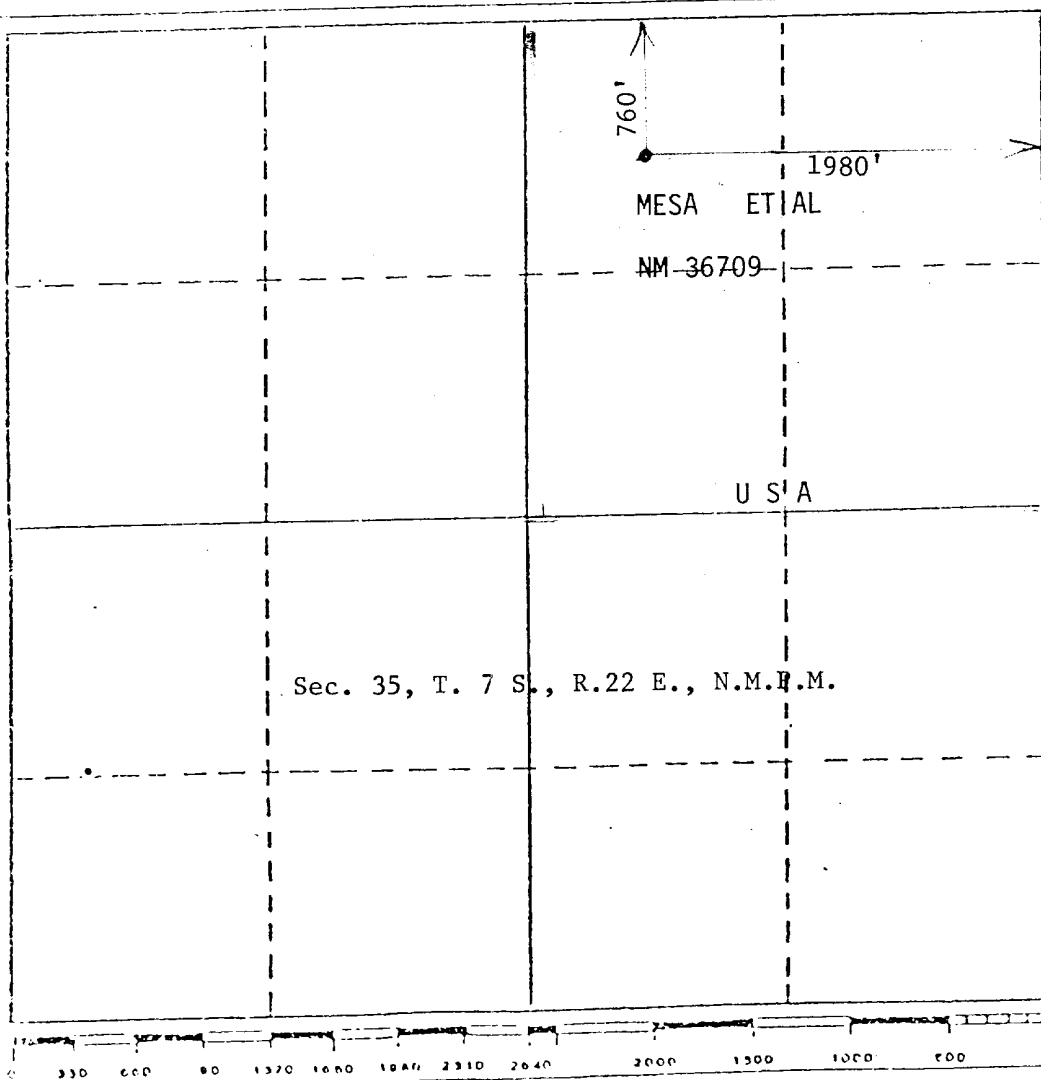
Operator <b>Mesa Petroleum Co.</b>			Lease <b>Bill Federal</b>		Well No. <b>#1</b>
Unit Letter <b>B</b>	Section <b>35</b>	Township <b>7 south</b>	Range <b>22 east</b>	County <b>Chaves</b>	
Actual Footage Location of Well: <div style="display: flex; justify-content: space-between;"> <span>1980 feet from the</span> <span>East line and</span> <span>760 feet from the</span> <span>North line</span> </div>					
Ground Level Elev. <b>4265</b>	Producing Formation <b>ABO</b>	Pool <b>WILDCAT</b>		Dedicated Acreage: <b>NE/4 160 Acres</b>	

1. Outline the acreage dedicated to the subject well by colored pencil or hatchure marks on the plat below.
2. If more than one lease is dedicated to the well, outline each and identify the ownership thereof (both as to working interest and royalty).
3. If more than one lease of different ownership is dedicated to the well, have the interests of all owners been consolidated by communitization, unitization, force-pooling, etc?

☐ Yes ☐ No If answer is "yes," type of consolidation \_\_\_\_\_

If answer is "no," list the owners and tract descriptions which have actually been consolidated. (Use reverse side of this form if necessary.) \_\_\_\_\_

No allowable will be assigned to the well until all interests have been consolidated (by communitization, unitization, forced-pooling, or otherwise) or until a non-standard unit, eliminating such interests, has been approved by the Division.



CERTIFICATION

I hereby certify that the information contained herein is true and complete to the best of my knowledge and belief.

*R. E. Mathis*

Name

**R. E. MATHIS**

Position

**REGULATORY COORDINATOR**

Company

**MESA PETROLEUM CO.**

Date

**JUNE 16, 1982**

I hereby certify that the well location shown on this plat was plotted from field notes of actual surveys made by me or under my supervision, and that the same is true and correct to the best of my knowledge and belief.

Date Surveyed

**June 5, 1982**

Registered Professional Engineer and/or Land Surveyor

**John D. Jaquess, P.E. & L.S.**

Certificate No. **6290**

APPLICATION FOR PERMIT TO DRILL

MESA PETROLEUM CO.  
BILL FEDERAL #1  
760' FNL & 1980' FEL, SEC 35, T7S, R22E  
CHAVES COUNTY, NEW MEXICO

LEASE NO. NM-36709

In conjunction with Form 9331-C, Application For Permit to Drill subject well, the following additional information is provided:

1. Applicable portions of the GENERAL REQUIREMENTS FOR OIL AND GAS OPERATIONS ON FEDERAL LEASES, Roswell District, Geological Survey of September 1, 1980 will be adhered to.

2. Geological markers are estimated as follows:

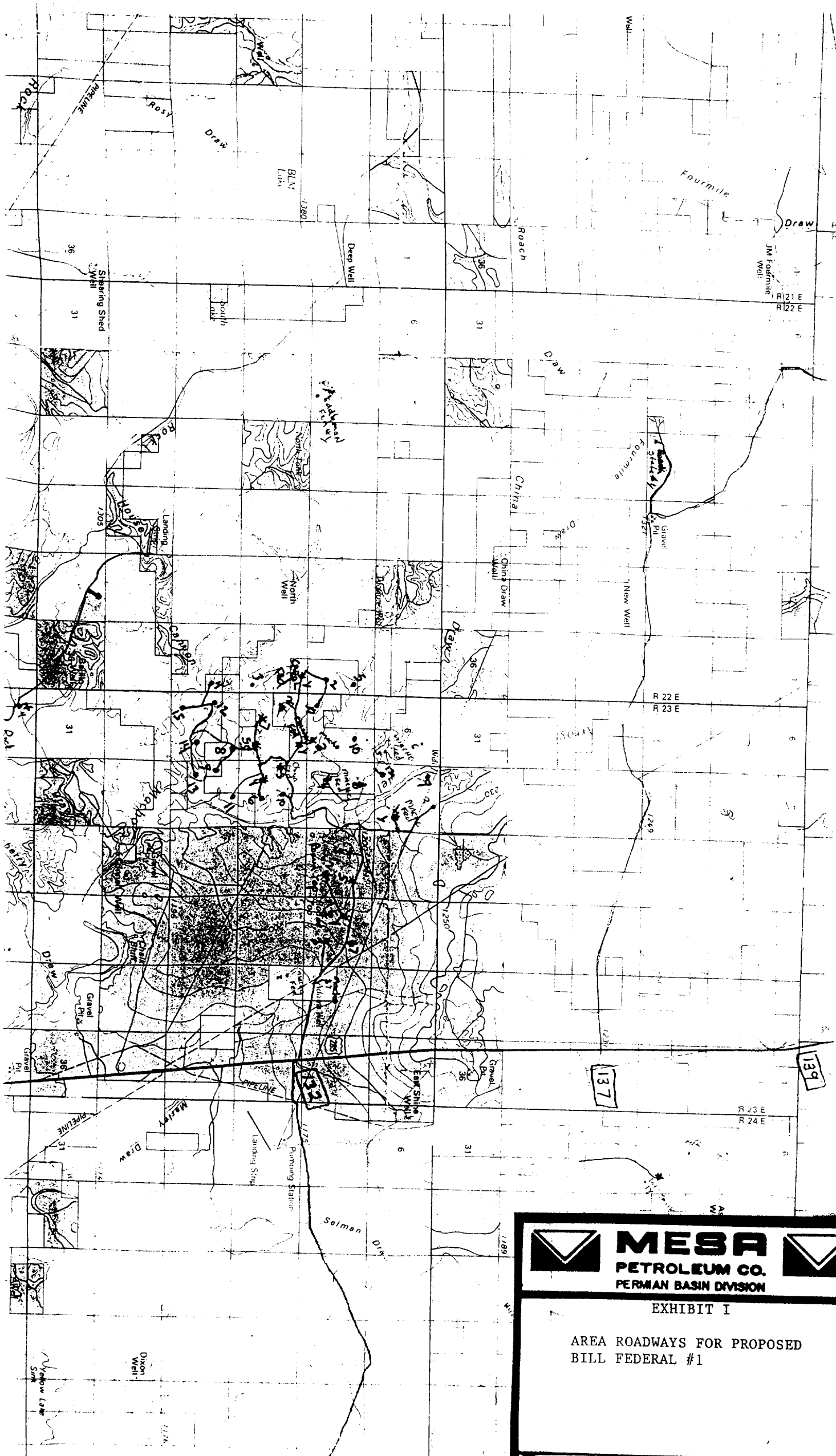
SEVEN RIVERS	Surface
SAN ANDRES	Surface
GLORIETA	781
TUBB	2331
ABO	3072


3. Hydrocarbon bearing strata may occur in the Abo formation(s). No fresh water is expected to be encountered below 1400'.

4. The Casing and Blowout Preventer Program will be determined by hole conditions as encountered. See Exhibit VI. Anticipate drilling with air or foam using ram type preventer and rotating head for well control. The 8 5/8" casing will be set at approximately 1400' to protect any fresh water zones and cemented to the surface. The 4 1/2" production casing will be set at total depth or shallower depending upon the depth of the deepest commercial hydrocarbon bearing strata encountered. Sufficient amounts and kinds of cement would be used to ensure any water, gas, or oil zones encountered are isolated and shut off down to the casing point if run.

5. No drill stem test or coring program is planned. The logging program may consist of a GR-CNL from surface total depth and FDC from casing point to total depth.

6. Anticipated drilling time is ten days with completion operations to follow as soon as a completion unit is available.






# MESA

**PETROLEUM CO.**

PERMAN BASIN DIVISION



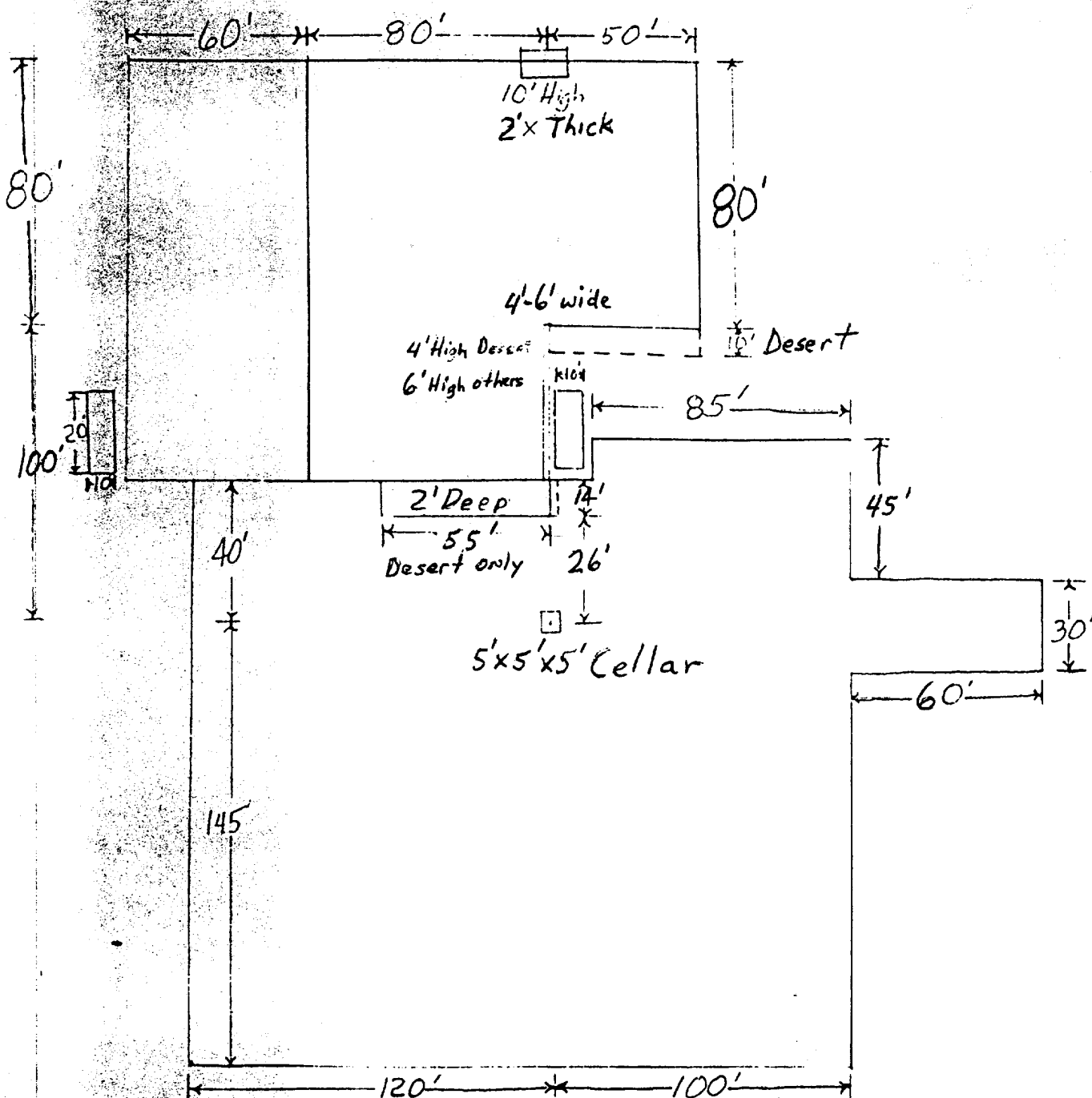
**EXHIBIT I**

**AREA ROADWAYS FOR PROPOSED**

**BILL FEDERAL #1**

**DATE: 11/27/67**

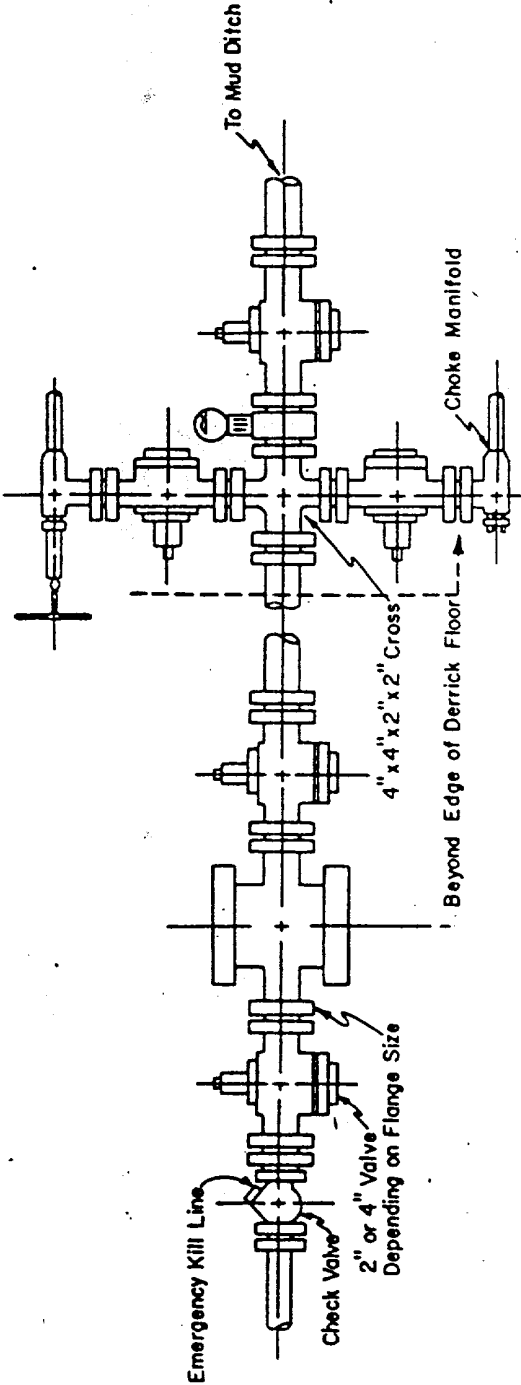
**SCALE:**



6"-8" Watered & Compacted Caliche  
ON PAD & ROAD IF NEEDED

A large rectangular label with a black border. At the top, there are two stylized envelope icons, one on the left and one on the right. Between them, the word "MESA" is printed in large, bold, black capital letters. Below "MESA", the words "PETROLEUM CO." are printed in smaller, bold, black capital letters. Below that, "PERMAN BASIN DIVISION" is printed in even smaller, bold, black capital letters. In the center of the label, "EXHIBIT V" is printed in bold, black capital letters. Below that, "FOR PROPOSED BILL FEDERAL #1" is printed in bold, black capital letters. At the bottom of the label, there are two horizontal lines. The left line is labeled "DATE:" and the right line is labeled "DRAWN BY:". Below these lines, the word "SCALE:" is printed.

Blow-out Preventers hydril and choke manifold are all 900 Series

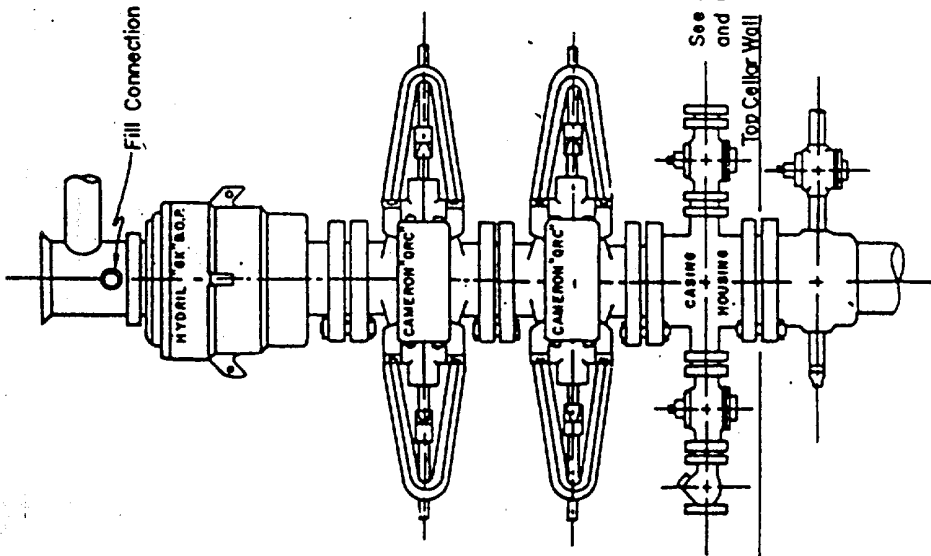


### 3,000 PSI WORKING PRESSURE KILL, CHOKES, AND FILL CONNECTIONS

#### DETAIL OF 4" FLOW LINE CHOKES ASSEMBLY

Minimum assembly for 3,000 PSI working pressure will consist of three preventers.  
The bottom and middle preventers may be Cameron.

NOTE: HYDRIL not installed on shallow-low pressure wells.  
RAM type BOPs are API 10" X 3000 PSI



### 3,000 PSI WORKING PRESSURE BLOW-OUT PREVENTER HOOK-UP

See Detail of 4" Flow Line  
and Choke Assembly  
Top Casing Wall



E X H I B I T

V I

DATE: \_\_\_\_\_  
SCALE: \_\_\_\_\_