

NO. OF COPIES RECEIVED	
DISTRIBUTION	
SANTA FE	
FILE	
U.S.G.S.	
LAND OFFICE	
OPERATOR	

P. O. BOX 2088
SANTA FE, NEW MEXICO 87501
SEP 14 1982

O. C. D.
ARTESIA, OFFICE

5A. Indicate Type of Lease
STATE FEE

5. State Oil & Gas Lease No.

7. Unit Agreement Name

8. Farm or Lease Name
O'Brien "DB"

9. Well No.
3

10. Field and Pool, or Wildcat
Twin Lakes- San Andres Assoc.

12. County
Chaves

APPLICATION FOR PERMIT TO DRILL, DEEPEN, OR PLUG BACK

Type of Work
DRILL DEEPEN PLUG BACK

Type of Well
OIL WELL GAS WELL OTHER

Name of Operator
STEVENS OPERATING CORPORATION

Address of Operator
P. O. BOX 2408, ROSWELL, NEW MEXICO 88201

Location of well
UNIT LETTER J LOCATED 1650 FEET FROM THE South LINE

1650 FEET FROM THE East LINE OF SEC. 12 TWP. 9S RGE. 28E NMPM

15. Proposed Depth
2950

19A. Formation
San Andres

20. Rotary or C.T.
Rotary

1. Elevations (show whether DR, KI, etc.)
3929.0 GL, 3934 KB

21A. Kind & Status Plug. Bond
Statewide

21B. Drilling Contractor
Artesia Fishing Tool

22. Approx. Date Work will start
September 27, 1982

3. PROPOSED CASING AND CEMENT PROGRAM

SIZE OF HOLE	SIZE OF CASING	WEIGHT PER FOOT	SETTING DEPTH	SACKS OF CEMENT	EST. TOP
12 1/4"	8 5/8"	23#	130'	75 sx.	Circ
7 7/8"	4 1/2"	10.5#	2950'	200 sx.	

Will drill with water and mud to T.D., log and if indicated productive, case to T.D. and perforate in productive intervals.

Adequate blowout preventers will be used.

APPROVAL VALID FOR 180 DAYS
PERMIT EXPIRES 3-15-83
UNLESS DRILLING UNDERWAY

4. ABOVE SPACE DESCRIBE PROPOSED PROGRAM; IF PROPOSAL IS TO DEEPEN OR PLUG BACK, GIVE DATA ON PRESENT PRODUCTIVE ZONE AND PROPOSED NEW PRODUCTIVE ZONE. GIVE BLOWOUT PREVENTER PROGRAM, IF ANY.

I hereby certify that the information above is true and complete to the best of my knowledge and belief.
Signed Sam Thompson Title Production Coordinator Date September 9, 1982

APPROVED BY Mike Walker TITLE OIL AND GAS INSPECTOR DATE SEP 15 1982

CONDITIONS OF APPROVAL, IF ANY:

NEW MEXICO OIL CONSERVATION COMMISSION
WELL LOCATION AND ACREAGE DEDICATION PLAT

Form O-102
Supersedes C-128
Effective 1-1-65

All distances must be from the outer boundaries of the Section

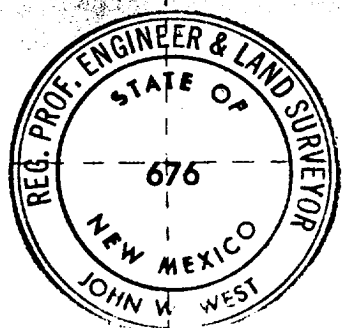
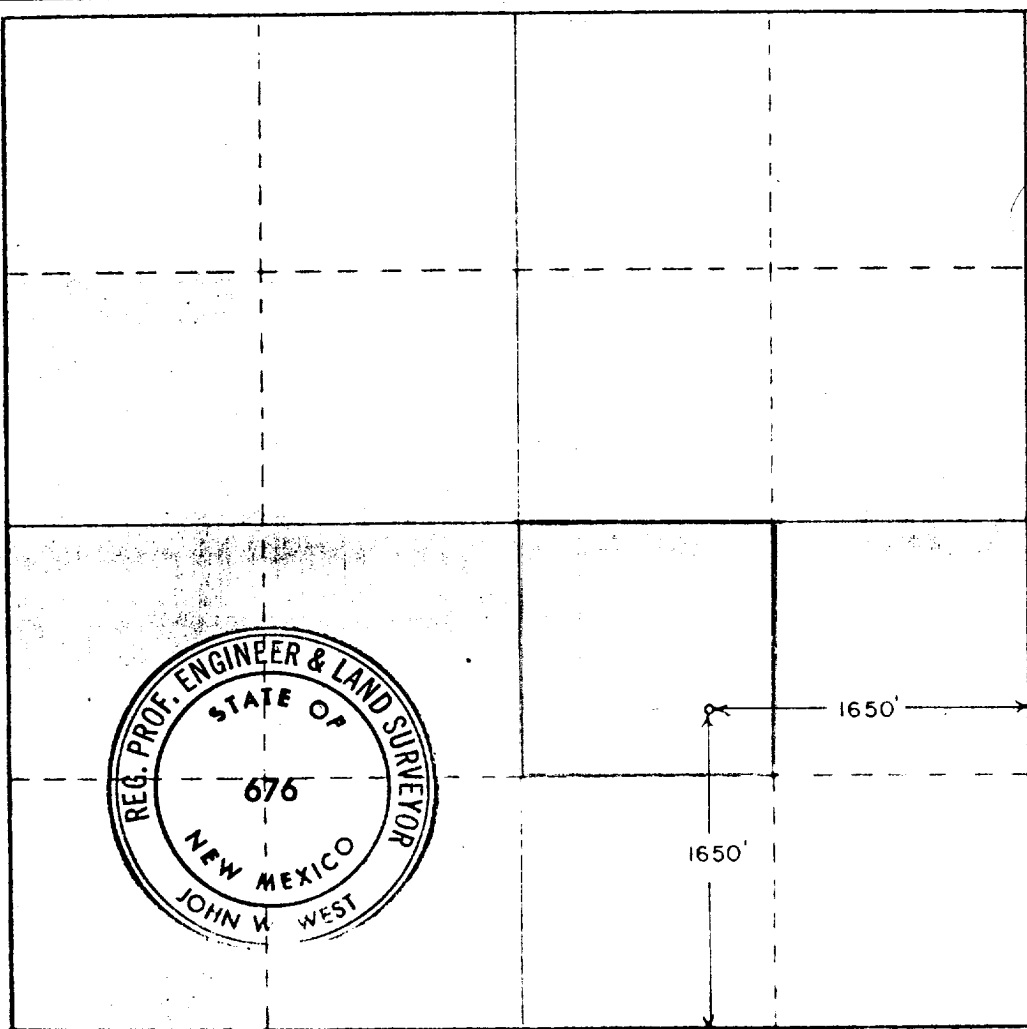
Operator STEVENS OPERATING CO.		Well Name O'BRIEN DB			Well No. 3
Tract Letter J	Section 12	Township 9S	Range 28E	County CHAVES	
Actual Footage Location of Well: 1650 feet from the SOUTH line and 1650 feet from the EAST line					
Ground Level Elev. 3929.0	Producing Formation San Andres		Pool Twin Lakes-San Andres Assoc.	Dedicated Acreage: 40 acres	

- Outline the acreage dedicated to the subject well by colored pencil or hachure marks on the plat below.
- If more than one lease is dedicated to the well, outline each and identify the ownership thereof (both as to working interest and royalty).
- If more than one lease of different ownership is dedicated to the well, have the interests of all owners been consolidated by communitization, unitization, force-pooling, etc?

Yes No If answer is "yes," type of consolidation _____

If answer is "no," list the owners and tract descriptions which have actually been consolidated. (Use reverse side of this form if necessary.) _____

No allowable will be assigned to the well until all interests have been consolidated (by communitization, unitization, forced-pooling, or otherwise) or until a non-standard unit, eliminating such interests, has been approved by the Commission.



CERTIFICATION

I hereby certify that the information contained herein is true and complete to the best of my knowledge and belief.

Pat Thompson
Name:

Pat Thompson

Position:
Production Coordinator

Company:
STEVENS OPERATING CORPORATION

Date:
September 9, 1982

I hereby certify that the well location shown on this plat was plotted from field notes of actual surveys made by me or under my supervision, and that the same is true and correct to the best of my knowledge and belief.

9/3/82

Registered Professional Engineer and/or Land Surveyor

John W. West
Certificate No. **JOHN W. WEST 676**

PATRICK A. ROMERO 6663