

N OIL CONS. COMMISSION  
Drawer  
Artesia, UNITED STATES  
DEPARTMENT OF THE INTERIOR  
GEOLOGICAL SURVEYSUBMIT IN 'PLICATE\*  
(Other ins on reverse side)30-005-61775  
Form approved.  
Budget Bureau No. 42-R1425.

## APPLICATION FOR PERMIT TO DRILL, DEEPEN, OR PLUG BACK

1a. TYPE OF WORK DRILL <input checked="" type="checkbox"/> DEEPEN <input type="checkbox"/> PLUG BACK <input type="checkbox"/>		5. LEASE DESIGNATION AND SERIAL NO. NM-16783
b. TYPE OF WELL OIL WELL <input type="checkbox"/> GAS WELL <input checked="" type="checkbox"/> OTHER <input type="checkbox"/>		6. IF INDIAN, ALLOTTEE OR TRIBE NAME
2. NAME OF OPERATOR Read & Stevens, Inc.		7. UNIT AGREEMENT NAME
3. ADDRESS OF OPERATOR P. O. Box 1518 Roswell, New Mexico 88201		8. FARM OR LEASE NAME Beard Federal Comm.
4. LOCATION OF WELL (Report location clearly and in accordance with any State requirements.*) At surface 660' FSL and 660' FWL		9. WELL NO. 1
14. DISTANCE IN MILES AND DIRECTION FROM NEAREST TOWN OR POST OFFICE* 45 miles northeast of Roswell, NM		10. FIELD AND POOL, OR WILDCAT Pecos Slope Abo
15. DISTANCE FROM PROPOSED* LOCATION TO NEAREST PROPERTY OR LEASE LINE, FT. (Also to nearest drlg. unit line, if any) 660'		11. SEC., T., R., M., OR BLK. AND SURVEY OR AREA Sec. 10-T5S-R25E
16. NO. OF ACRES IN LEASE 880.99		12. COUNTY OR PARISH Chaves
17. NO. OF ACRES ASSIGNED TO THIS WELL 80 (160 Comm)		13. STATE New Mexico
18. DISTANCE FROM PROPOSED LOCATION* TO NEAREST WELL, DRILLING, COMPLETED, OR APPLIED FOR, ON THIS LEASE, FT. None		20. ROTARY OR CABLE TOOLS Rotary
21. ELEVATIONS (Show whether DF, RT, GR, etc.) 3774 GR		22. APPROX. DATE WORK WILL START* September 20, 1982

## PROPOSED CASING AND CEMENTING PROGRAM

SIZE OF HOLE	SIZE OF CASING	WEIGHT PER FOOT	SETTING DEPTH	QUANTITY OF CEMENT
20"	16"	65#	30'	10 Sx Circulated
14 3/4"	10 3/4"	40.5#	900'	700 Sx Circulated
7 7/8"	4 1/2"	10.5#	400'	400 Sx to cover 600' above Abo
				400 Sx to cover Glorieta to Surf

We propose to drill the Abo formation to a total depth of 4500'. If production is indicated, will set casing and attempt completion.

Mud Program: See Exhibit "F" -- Mud program proposal from Marrs Mud for the Susie Fed. #1. This same program will be followed on this well.

BOP Program: A 5000 lb. WP Shaffer Type "LWS" Hydraulic Operated Double Blow Out Preventer will be used and installed on the 10 3/4" casing and will be tested daily. See Exhibit "E".

Gas not dedicated.

Note: If circulation is lost, approximately 1800' of 7 5/8" intermediate casing will be run and enough cement to tie back 200' in the 10 3/4" casing.

Posted ID-1  
9-24-82  
APE & BK.

IN ABOVE SPACE DESCRIBE PROPOSED PROGRAM: If proposal is to deepen or plug back, give data on present productive zone and proposed new productive zone. If proposal is to drill or deepen directionally, give pertinent data on subsurface locations and measured and true vertical depths. Give blowout preventer program, if any.

24. SIGNED George H. Stewart TITLE Agent for: Read & Stevens, Inc. DATE August 30, 1982

(This space for Federal or State office use)

PERMIT NO.

APPROVED

APPROVAL DATE

APPROVED BY

(Orig. Sgd.) GEORGE H. STEWART

TITLE

CONDITIONS OF APPROVAL

SEP 17 1982

JAMES A. GILLHAM  
DISTRICT SUPERVISOR

See Instructions On Reverse Side

RECEIVED  
AUG 31 1982OIL & GAS  
U.S. GEOLOGICAL SURVEY  
ROSWELL, NEW MEXICO

All distances must be from the outer boundaries of the Section.

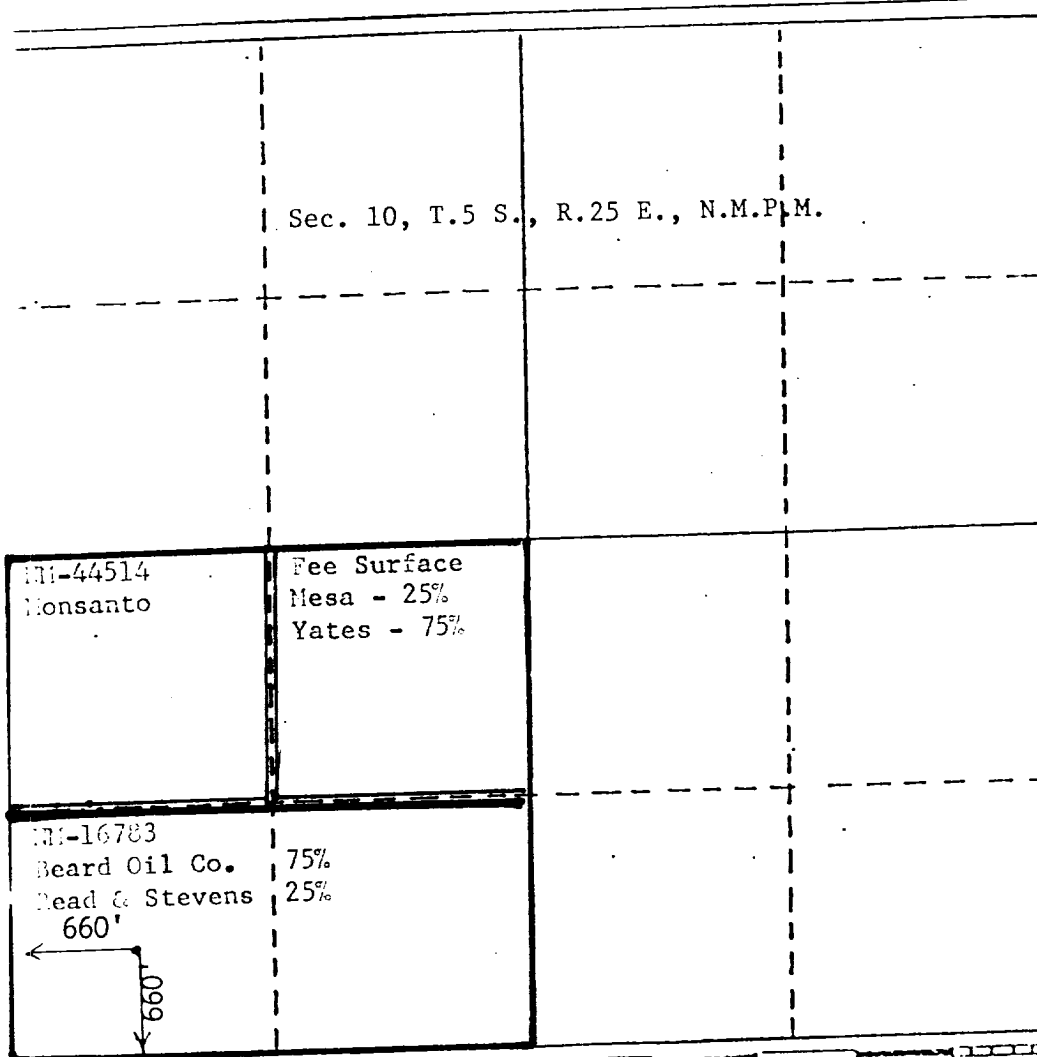
Lease			Beard Federal Com.		Well No.
Read & Stevens, Inc.					#1
Section	Township	Range	County		
10	5 South	25 East	Chaves		
Postage Location of Well:					
660	feet from the	South	Line and	660	feet from the West
Line					Dedicated Acreage:
3774	Producing Formation	Abo	Pool	Pecos Slope Abo	160 Acres

1. Outline the acreage dedicated to the subject well by colored pencil or hatchure marks on the plat below.
2. If more than one lease is dedicated to the well, outline each and identify the ownership thereof (both as to working interest and royalty).
3. If more than one lease of different ownership is dedicated to the well, have the interests of all owners been consolidated by communitization, unitization, force-pooling, etc?

☒ Yes ☐ No If answer is "yes," type of consolidation Communitization

If answer is "no," list the owners and tract descriptions which have actually been consolidated. (Use reverse side of this form if necessary.)

No allowable will be assigned to the well until all interests have been consolidated (by communitization, unitization, forced-pooling, or otherwise) or until a non-standard unit, eliminating such interests, has been approved by the Division.



#### CERTIFICATION

I hereby certify that the information contained herein is true and complete to the best of my knowledge and belief.

*George R. Smith*

Name  
George R. Smith

Position  
Agent for:

Company  
Read & Stevens, Inc.

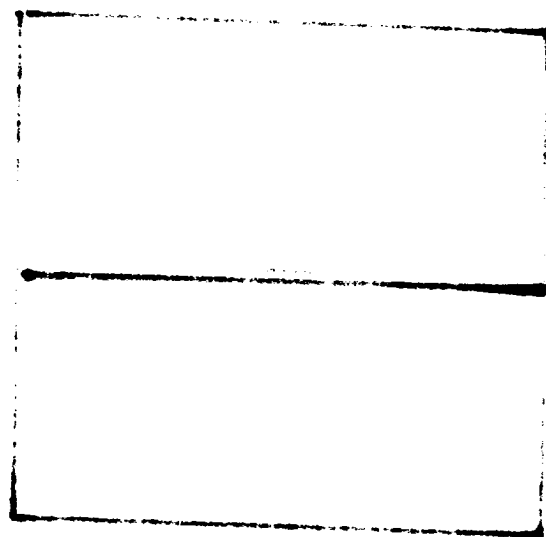
Date  
August 30, 1982

I hereby certify that the well location shown on this plat was plotted from field notes of actual surveys made by me or under my supervision, and that the same is true and correct to the best of my knowledge and belief.

Date Signed  
August 30, 1982

Registered Professional Engineer and/or Land Surveyor

*John D. Jaques*  
John D. Jaques, P.E. & L.S.  
Certificate No. 6290



APPLICATION FOR DRILLING

READ & STEVENS, INC.  
Beard Federal Com., Well No. 1  
660' FSL & 660' FWL, Sec. 10-T5S-R25E  
Chaves County, New Mexico  
Lease No.: NM-16783  
(Development Well)

In conjunction with Form 9-331C, Application for Permit to Drill subject well, Read & Stevens, Inc. submits the following items of pertinent information in accordance with MMS requirements:

1. The geologic surface formation is Permian with quaternary alluvium and other surficial deposits.
2. The estimated tops of geologic markers are as follows:

San Andres	550'	Abo	3632'
Glorieta	1610'	T.D.	4500'
Fullerton	2984'		
3. The estimated depth at which anticipated water, oil or gas formations are expected to be encountered:  
Water: Approximately 100 - 200' surface water.  
Oil: None expected.  
Gas: Abo between 3675' and 4050'.
4. Proposed Casing Program: See Form 9-331C.
5. Pressure Control Equipment: Blowout Preventer is a Shaffer Type "LMS" 11" 5000 lb. WP. See Exhibit "E".
6. Mud Program: Se Exhibit "F", proposed mud program from Marrs Mud.
7. Auxiliary Equipment: Blowout preventer, gas detector, kelly cock, pit level monitor, flow sensors and stabbing valve.
8. Testing, Logging and Coring Program:

Logging: Gamma Ray	Surface to T. D.
FDC/CNL	Inter. Csg. to T. D.
DLL	Inter. Csg. to T. D.

  
Drill Stem Tests: None planned.  
Coring: None planned.
9. No abnormal pressures or temperatures are anticipated. In the event abnormal pressures are encountered the proposed mud program will be modified to increase the mud weight.
10. Anticipated starting date: September 20, 1982.  
Anticipated completion of drilling operations: Two weeks.

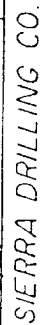


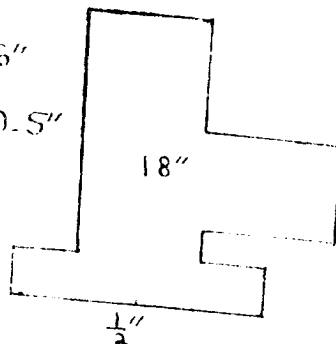
EXHIBIT "D"  
READ & STEVENS, INC.  
Beard Federal Com., Well No. 1  
Rig Layout

SIERRA DRILLING CO. Rig #5

6L to Floor 132"

6L to Bottom of Rotary 116"

This Stack is 110.5"



$\frac{1}{2}$ "

Shaffer LWS Db1. Hyd. 5000psi WP - 11"

29.5"

$\frac{1}{2}$ "

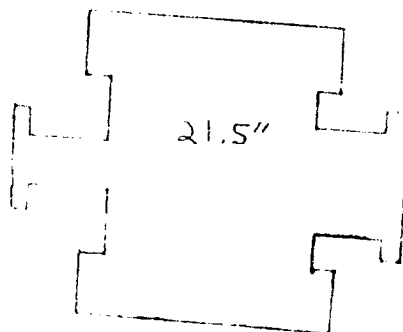


EXHIBIT "E"  
READ & STEVENS, INC.  
Beard Federal Com., Well No. 1  
BOP Diagram

AC 505  
23-6862



AC 505  
26-4876  
22-5616

**MARRS MUD**  
a division of  
Corral, Inc.  
1717 West Second St  
Roswell, New Mexico 88201

Sales Office  
P O Box 1119  
Lovington, New Mexico 88260

MPANY READ & STEVENS, IN  
WELL SUSIE FEDERAL #1  
FIELD \_\_\_\_\_  
LOCATION SECTION 31, T-8-S, R-26-E  
COUNTY CHAVES STATE NEW MEXICO  
PROPOSED DEPTH 4,800'

PROPOSED MUD PROGRAM BY CASING INTERVAL

SURFACE: 0 - 900'

We suggest spudding with Fresh Water Gel/Lime Slurry maintaining a 34-36 Sec/1000cc Viscosity. This will convert to a Native Mud System and should be maintained as a "STABLE" Red Bed Mud. A few sacks of Dicks Mud Seal (shredded paper) added through this interval will aid in filter cake and hole drag.

No problems are anticipated in this interval.

PRODUCTION: 900' - 4,800'

Drill from below the Surface Casing with Fresh Water, circulating a portion of the reserve. Caustic Soda may be used for a pH control of 9.0-9.5.

This fluid will become Salt Saturated while drilling the Salt Section. A fluid of this nature should be adequate to drill to 3,800' where we suggest confining circulation to the working pits and mudding up with Salt Gel/Starch for a fluid with the following properties:

Mud Weight: 10.0 - 10.2 PPG  
Viscosity: 38 - 40 Sec/1000cc  
Fluid Loss: 10 - 15 ML  
Oil Content: 3 - 4%

A fluid with the above properties, with the exception of raising the Viscosity to 45-50 Sec/1000cc and lowering the Fluid Loss to 10 ML at total depth, should be adequate to safely drill, test and run casing.

COMMENTS:

1. There is a slight chance of encountering seepage and loss of circulation from 1,700' to total depth. If this occurs, we suggest building pills of heavily laden loss circulation material and spotting in thief zone. If ~~fluid~~ we suggest maintaining some loss ~~fluid~~.

EXHIBIT "F"  
READ & STEVENS, INC.  
Beard Federal Com., Well No. 1  
Mud Program