

NM OIL CONS. COMMISSION
Drawn D
Artesia, NM 88210
UNITED STATES
DEPARTMENT OF THE INTERIOR
GEOLOGICAL SURVEY

SUBMIT IN TRI DATE*
(Other instructions on reverse side)

30-085-61776
Form approved.
Budget Bureau No. 42-B1425.

APPLICATION FOR PERMIT TO DRILL, DEEPEN, OR PLUG BACK

1a. TYPE OF WORK
DRILL ☒ DEEPEN ☐ PLUG BACK ☐

b. TYPE OF WELL
OIL ☐ GAS WELL ☒ OTHER ☐

2. NAME OF OPERATOR
Yates Petroleum Corporation

3. ADDRESS OF OPERATOR
207 S. 4th, Artesia, New Mexico 88210

4. LOCATION OF WELL (Report location clearly and in accordance with any State or Federal requirements)
At surface 660' FNL and 1980' FEL
At proposed prod. zone Same

14. DISTANCE IN MILES AND DIRECTION FROM NEAREST TOWN OR POST OFFICE*
38.5 miles NNE of Roswell, New Mexico

15. DISTANCE FROM PROPOSED* LOCATION TO NEAREST PROPERTY OR LEASE LINE, FT. (Also to nearest drlg. unit line, if any)
660'

16. NO. OF ACRES IN LEASE
2120

17. NO. OF ACRES ASSIGNED TO THIS WELL
160

18. DISTANCE FROM PROPOSED* LOCATION TO NEAREST WELL, DRILLING, COMPLETED, OR APPLIED FOR, ON THIS LEASE, FT.
4025'

19. PROPOSED DEPTH
4025'

20. ROTARY OR CABLE TOOLS
Rotary

21. ELEVATIONS (Show whether DF, RT, GR, etc.)
3984.6' GL

22. APPROX. DATE WORK WILL START*
ASAP

SEP 17 1982
RECEIVED
O.C.D.
ARTESIA, OFFICE
SEP 1 1982
U.S. GEOLOGICAL SURVEY
OIL & GAS
ROSWELL, NEW MEXICO

5. LEASE DESIGNATION AND SERIAL NO.
NM-22614

6. IF INDIAN, ALLOTTEE OR TRIBE NAME

7. UNIT AGREEMENT NAME

8. FARM OR LEASE NAME
Mike Harvey "TR" Federal

9. WELL NO.
2

10. FIELD AND POOL, OR WILDCAT
X Pecos Slope Abo

11. SEC., T., R., M., OR BLK. AND SURVEY OR AREA
Sec. 3-T5S-R24E

12. COUNTY OR PARISH
Chaves

13. STATE
NM

PROPOSED CASING AND CEMENTING PROGRAM				
SIZE OF HOLE	SIZE OF CASING	WEIGHT PER FOOT	SETTING DEPTH	QUANTITY OF CEMENT
14 3/4"	10 3/4"	40.5# J-55	925'	600 sx circulated
7 7/8"	4 1/2"	9.5#	TD	

We propose to drill and test the Abo and intermediate formations. Approximately 925' of surface casing will be set and cement circulated to shut off gravel and caving. If needed (lost circulation) 8 5/8" intermediate casing will be run to 1500' and cemented with enough cement calculated to tie back into the surface casing. If commercial, production casing will be run and cemented with adequate cover, perforated and stimulated as needed for production.

MUD PROGRAM: FW gel and LCM to 925', Brine to 3200', Brine & KCL water to TD.

BOP PROGRAM: BOP's will be installed at the offset and tested daily.

GAS NOT DEDICATED.

IN ABOVE SPACE DESCRIBE PROPOSED PROGRAM: If proposal is to deepen or plug back, give data on present productive zone and proposed new productive zone. If proposal is to drill or deepen directionally, give pertinent data on subsurface locations and measured and true vertical depths. Give blowout preventer program, if any.

24. SIGNED Cy Cowan TITLE Regulatory Coordinator DATE 8/27/82

(This space for Federal or State office use)

APPROVED
SEP 2 1982
GEORGE H. STEWART

PERMIT NO. _____ APPROVAL DATE _____

APPROVED BY _____ TITLE _____ DATE _____

CONDITIONS OF APPROVAL, IF ANY:
SEP 3 1982
JAMES A. GILLHAM
DISTRICT SUPERVISOR

Pasted ID-1
9-24-82
APF & AB

/ MEXICO OIL CONSERVATION COMMISS N
WELL LOCATION AND ACREAGE DEDICATION PLAT

Form C-102
Supersedes C-128
Effective 1-1-65

All distances must be from the outer boundaries of the Section.

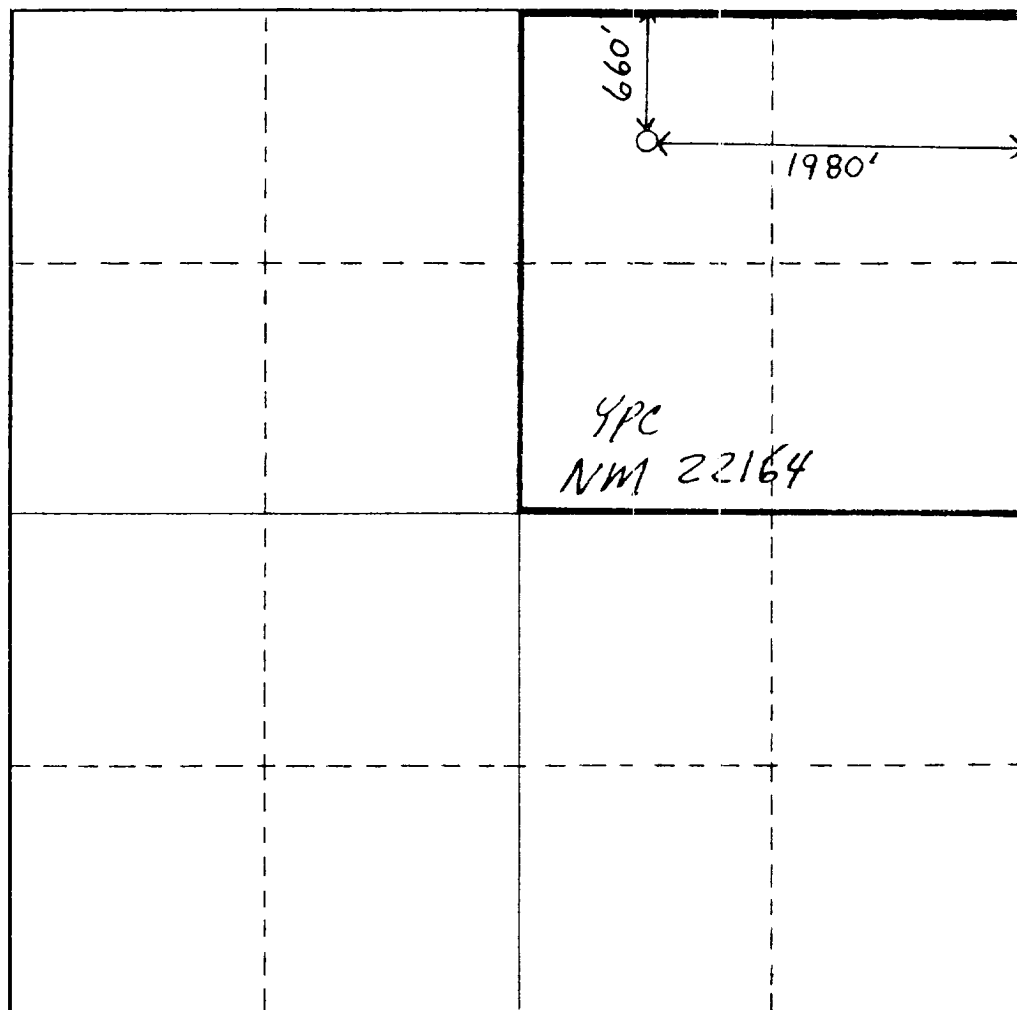
Operator YATES PETROLEUM CORPORATION			Lessee Mike Harvey "TR" Federal		Well No. 2
Unit Letter B	Section 3	Township 5 South	Range 24 East	County Chaves	
Actual Footage Location of Well: 660 feet from the NORTH West line and 1980 feet from the East line					
Ground Level Elev. 3984.6' GL	Producing Formation ABO		Pool Pecos Slope ABO		Dedicated Acreage: 160 Acres

1. Outline the acreage dedicated to the subject well by colored pencil or hachure marks on the plat below.
2. If more than one lease is dedicated to the well, outline each and identify the ownership thereof (both as to working interest and royalty).
3. If more than one lease of different ownership is dedicated to the well, have the interests of all owners been consolidated by communitization, unitization, force-pooling, etc?

☐ Yes ☒ No If answer is "yes," type of consolidation _____

If answer is "no," list the owners and tract descriptions which have actually been consolidated. (Use reverse side of this form if necessary.) _____

No allowable will be assigned to the well until all interests have been consolidated (by communitization, unitization, forced-pooling, or otherwise) or until a non-standard unit, eliminating such interests, has been approved by the Commission.

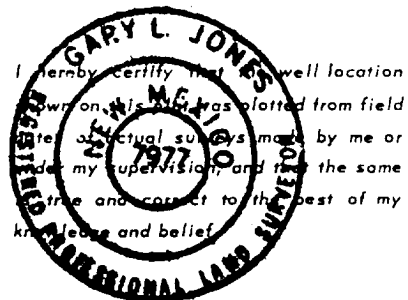


CERTIFICATION

I hereby certify that the information contained herein is true and complete to the best of my knowledge and belief.

Cy Cowan

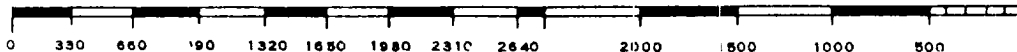
Name
Cy Cowan
Position
Regulatory Coordinator
Company
Yates Petroleum Corp.
Date
8/27/82



Date Surveyed
August 25, 1982
Registered Professional Engineer
and/or Land Surveyor

Dan A. Shen
Certificate No.

7977



YATES PETROLEUM CORPORATION
Mike Harvey "TR" Fed. #2
660' FWL and 1980' FEL
Sec. 3-T5S-R24E

In conjunction with Form 9-331C, Application for Permit to Drill subject well, Yates Petroleum Corporation submits the following ten items of pertinent information in accordance with USGS requirements.

1. The geologic surface formation is sandy alluvium.
2. The estimated tops of geologic markers are as follows:

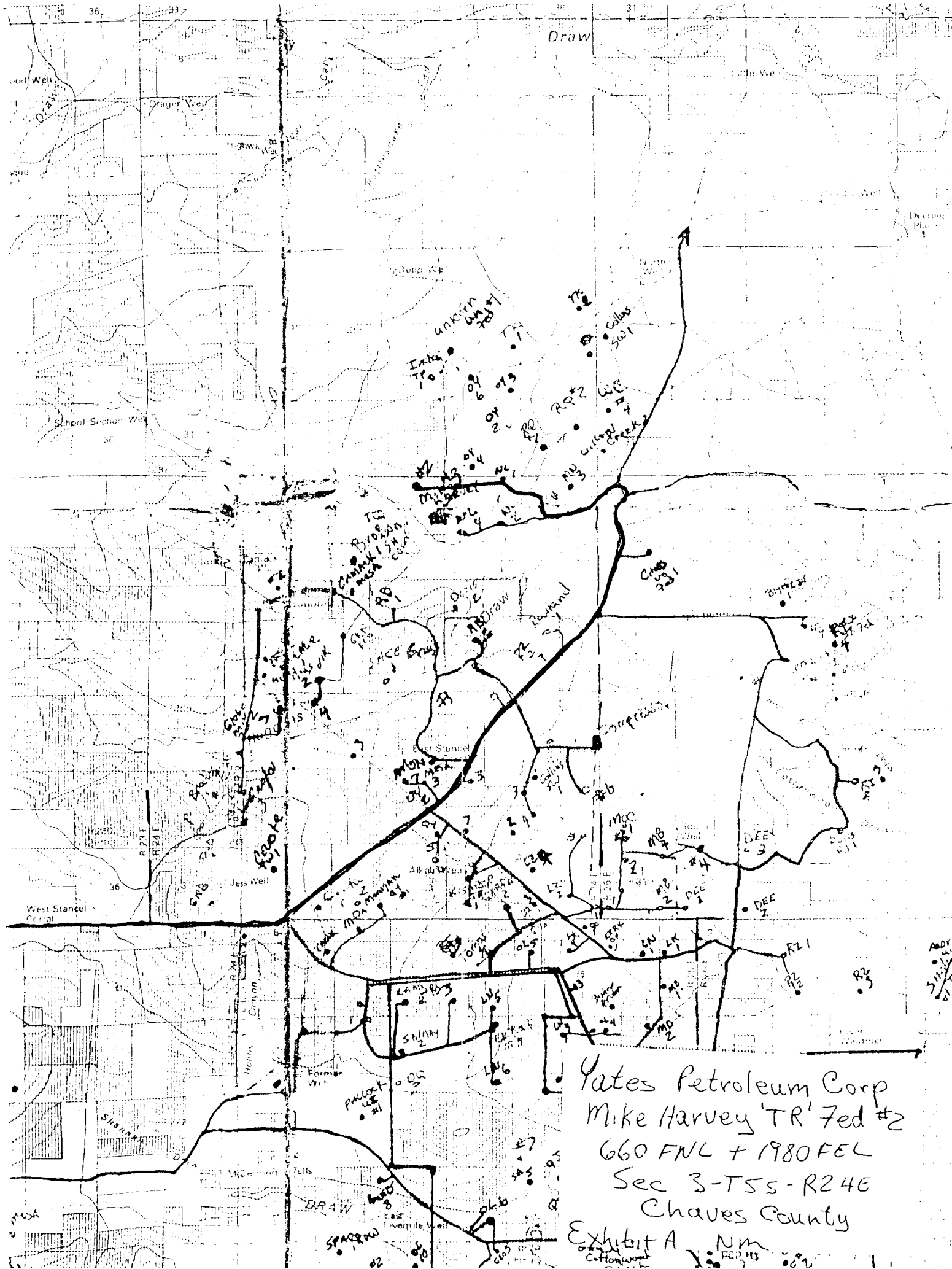
<u>San Andres</u>	<u>576'</u>
<u>Glorieta</u>	<u>1514'</u>
<u>Fullerton</u>	<u>2894'</u>
<u>Abo</u>	<u>3520'</u>
<u>TD</u>	<u>4025'</u>

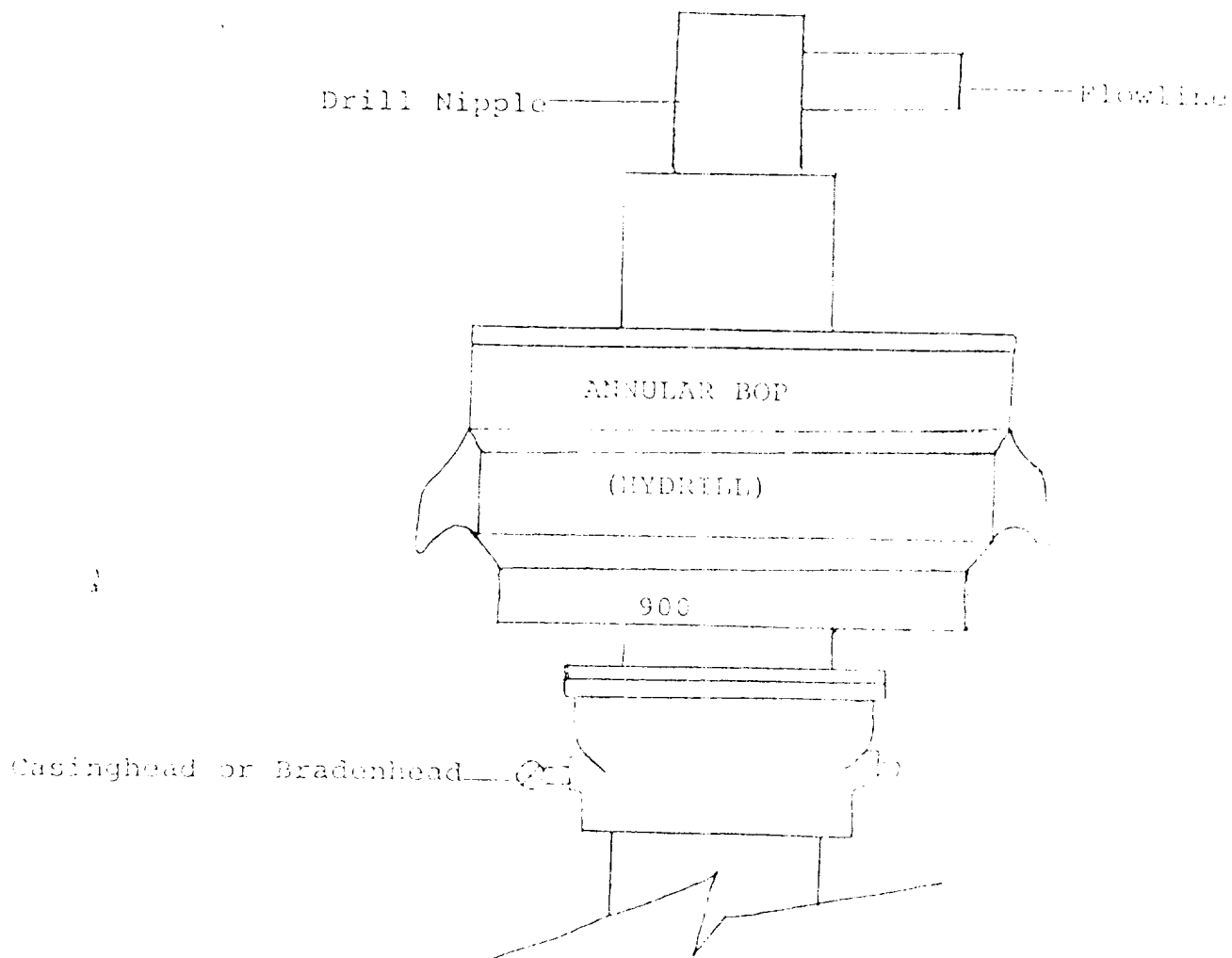
3. The estimated depths at which anticipated water, oil or gas formations are expected to be encountered:

Water: Approximately 250-300'

Oil or Gas: Abo 3520'

4. Proposed Casing Program: See Form 9-331C.
5. Pressure Control Equipment: See Form 9-331C and Exhibit B.
6. Mud Program: See Form 9-331C.
7. Auxiliary Equipment: Kelly Cock; pit level indicators and flow sensor equipment; sub with full-opening valve on floor, drill pipe connection.
8. Testing, Logging and Coring Program:
Samples: Surface casing to TD.
DST's: As warranted.
Coring: None
Logging: CNL-FDC TD to casing w/GR-CNL onto surface and DLL from TD
to casing.
9. No abnormal pressures or temperatures are anticipated.
10. Anticipated starting date: As soon as possible after approval.





THE FOLLOWING CONSTITUTE MINIMUM BLOWOUT PREVENTER REQUIREMENTS

1. All preventers to be hydraulically operated with secondary manual controls installed prior to drilling out from under casing.
2. All connections from operating manifolds to preventers to be all steel. Hole or tube a minimum of one inch in diameter.
3. The available closing pressure shall be at least 15% in excess of that required with sufficient volume to operate the BOP's.
4. All connections to and from preventer to have a pressure rating equivalent to that of the BOP's.
5. Hole must be kept filled on trips below intermediate casing.

YATES PETROLEUM CORPORATION

