

UNITED STATES
DEPARTMENT OF THE INTERIOR
RECEIVED
GEOLOGICAL SURVEY

APPLICATION FOR PERMIT TO DRILL, DEEPEN, OR PLUG BACK

1a. TYPE OF WORK

DRILL ☒

DEEPEN ☐

PLUG BACK ☐

b. TYPE OF WELL

OIL WELL ☒

GAS WELL ☐

ARTESIA, OFFICE

SINGLE ZONE ☒

MULTIPLE ZONE ☐

2. NAME OF OPERATOR

ROBERT N. ENFIELD

3. ADDRESS OF OPERATOR

P.O. BOX 2431, SANTA FE, NEW MEXICO 87501

4. LOCATION OF WELL (Report location clearly and in accordance with any State requirements.)*

At surface

2307' FNL AND 1651' FEL OF SECTION 35

At proposed prod. zone

14. DISTANCE IN MILES AND DIRECTION FROM NEAREST TOWN OR POST OFFICE*

16 AIR MILES NORTHWEST OF CAPROCK, NEW MEXICO

15. DISTANCE FROM PROPOSED*

LOCATION TO NEAREST
PROPERTY OR LEASE LINE, FT.
(Also to nearest drig. unit line, if any)

987'

16. NO. OF ACRES IN LEASE

800

17. NO. OF ACRES ASSIGNED
TO THIS WELL

40

18. DISTANCE FROM PROPOSED LOCATION*
TO NEAREST WELL, DRILLING, COMPLETED,
OR APPLIED FOR, ON THIS LEASE, FT.

-

19. PROPOSED DEPTH

2300'

20. ROTARY OR CABLE TOOLS

ROTARY

21. ELEVATIONS (Show whether DF, RT, GR, etc.)

3971 GL

22. APPROX. DATE WORK WILL START*

UPON APPROVAL

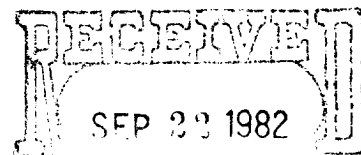
23.

PROPOSED CASING AND CEMENTING PROGRAM

SIZE OF HOLE	SIZE OF CASING	WEIGHT PER FOOT	SETTING DEPTH	QUANTITY OF CEMENT
12-1/4"	8-5/8"	24# K-55	350'	SUFFICIENT TO CIRCULATE
7-7/8"	4-1/2"	9.5# K-55	2300'	SUFFICIENT TO CIRCULATE

PRODUCING ZONE WILL BE PERFORATED AND STIMULATED AS NECESSARY.

SEE ATTACHED FOR: SUPPLEMENTAL DRILLING DATA
BOP SKETCH
SURFACE USE AND OPERATIONS PLAN



OIL & GAS
U.S. GEOLOGICAL SURVEY
ROSWEIL, NEW MEXICO

IN ABOVE SPACE DESCRIBE PROPOSED PROGRAM: If proposal is to deepen or plug back, give data on present productive zone and proposed new productive zone. If proposal is to drill or deepen directionally, give pertinent data on subsurface locations and measured and true vertical depths. Give blowout preventer program, if any.

24.

SIGNED

Arthur R. Brown

TITLE

Agent for
ROBERT N. ENFIELD

DATE SEPTEMBER 21, 1982

(This space for Federal or State office use)

(Orig. Sgd.) GEORGE H. STEWART

PERMIT NO.

SEP 23 1982

APPROVAL DATE

APPROVED BY

CONDITIONS OF APPROVAL, IF ANY

JOHN A. GILHAM
DISTRICT SUPERVISOR

TITLE

DATE

NEW MEXICO OIL CONSERVATION COMMISSION
WELL LOCATION AND ACREAGE DEDICATION PLAT

Form C-107
Supersedes C-128
Effective 1-1-65

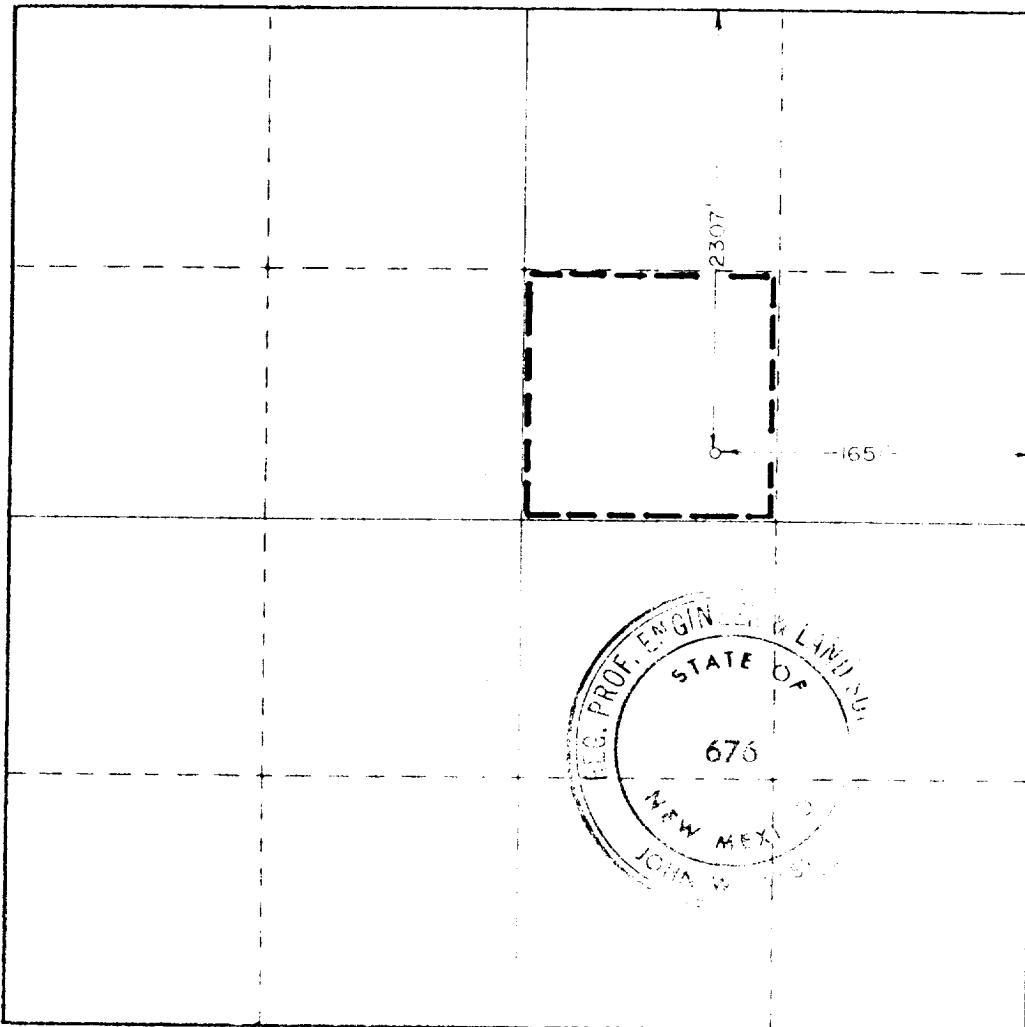
All distances must be from the outer boundaries of the Section

Operator ROBERT N. ENFIELD			Lease FEDERAL 35		Well No. 1
Init. Letter G	Section 35	Township 9 SOUTH	Range 29 EAST	County CHAVES	
Actual Footage Location of Well: 2307 feet from the NORTH line and 1651 feet from the EAST line					
Ground Level Elev. 3971.0	Producing Formation QUEEN		Pool WILDCAT	Dedicated Acreage: 40	

1. Outline the acreage dedicated to the subject well by colored pencil or hachure marks on the plat below.
2. If more than one lease is dedicated to the well, outline each and identify the ownership thereof (both as to working interest and royalty).
3. If more than one lease of different ownership is dedicated to the well, have the interests of all owners been consolidated by communitization, unitization, force-pooling, etc?
☐ Yes ☐ No If answer is "yes," type of consolidation _____

If answer is "no," list the owners and tract descriptions which have actually been consolidated. (Use reverse side of this form if necessary.) _____

No allowable will be assigned to the well until all interests have been consolidated (by communitization, unitization, forced-pooling, or otherwise) or until a non-standard unit, eliminating such interests, has been approved by the Commission.



CERTIFICATION

I hereby certify that the information contained herein is true and complete to the best of my knowledge and belief.

Arthur R. Brown
Name
Arthur R. Brown

Position
Agent for

Company
ROBERT N. ENFIELD

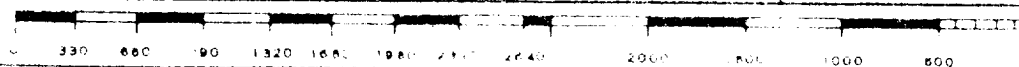
Date
SEPTEMBER 21, 1982

I hereby certify that the well location shown on this plat was plotted from field notes of actual surveys made by me or under my supervision, and that the same is true and correct to the best of my knowledge and belief.

Date Surveyed:
9-15-82

Registered Professional Engineer
in the State of New Mexico

John W. West
Certificate No. **JOHN W. WEST 676**
PATRICK A. ROMERO 6663
Ronald J. Eidson 3239



SUPPLEMENTAL DRILLING DATA

ROBERT N. ENFIELD

WELL NO. 1 FEDERAL 35

1. SURFACE FORMATION: Quaternary.

2. ESTIMATED TOPS OF GEOLOGIC MARKERS:

Rustler Anhydrite	850
Yates	1250
Queen	1850

3. ANTICIPATED POSSIBLE HYDROCARBON BEARING ZONES:

Queen	Oil
-------	-----

4. PROPOSED CASING AND CEMENTING PROGRAM:

CASING SIZE	SETTING DEPTH		WEIGHT	GRADE	JOINT
	FROM	TO			
8-5/8"	0	350	24#	K-55	STC
4-1/2"	0	2300	9.5#	K-55	STC

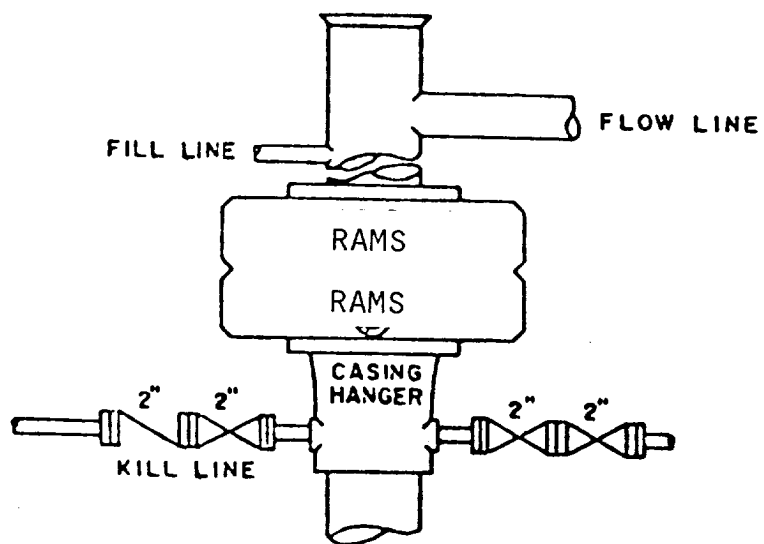
8-5/8" casing will be cemented with sufficient Class "C" cement to circulate to surface.

4-1/2" casing will be cemented with sufficient Light cement, tailed in with 200 sacks of Class "C" cement, to circulate to the surface.

5. PRESSURE CONTROL EQUIPMENT:

Blowout prevention equipment, while drilling below the 8-5/8" casing seat, will be a double ram, 2000 psi working pressure preventer.

BOP sketch is attached.



BOP STACK

2000 PSI WORKING PRESSURE

BOP ARRANGEMENT

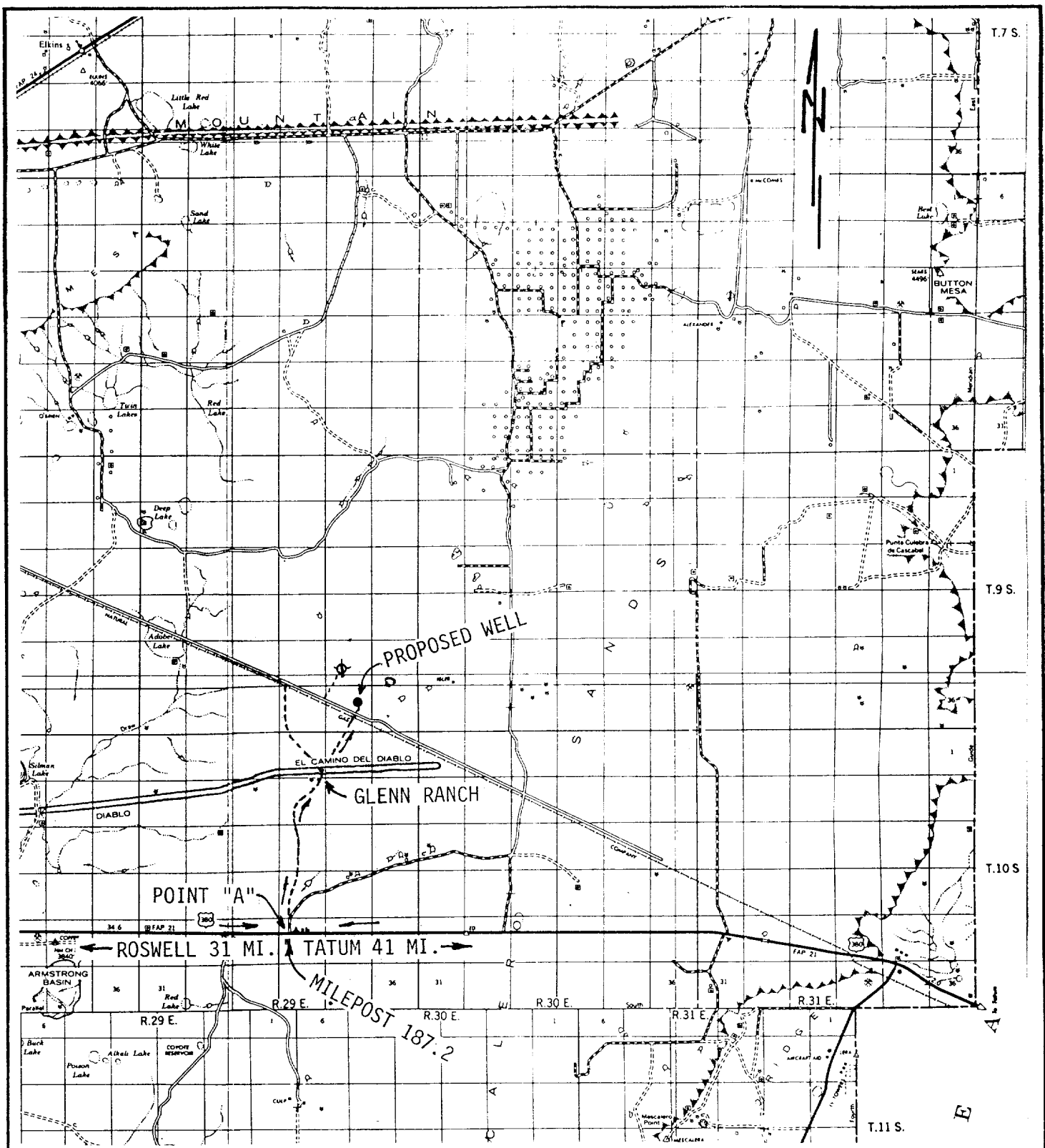


EXHIBIT "A"

ROBERT N. ENFIELD
 WELL NO. 1 FEDERAL 35
 2307' FNL & 1651' FEL SEC. 35, T.9 S., R.29 E.
 CHAVES COUNTY, N.M. SCALE: 1/3" = 1 MI.

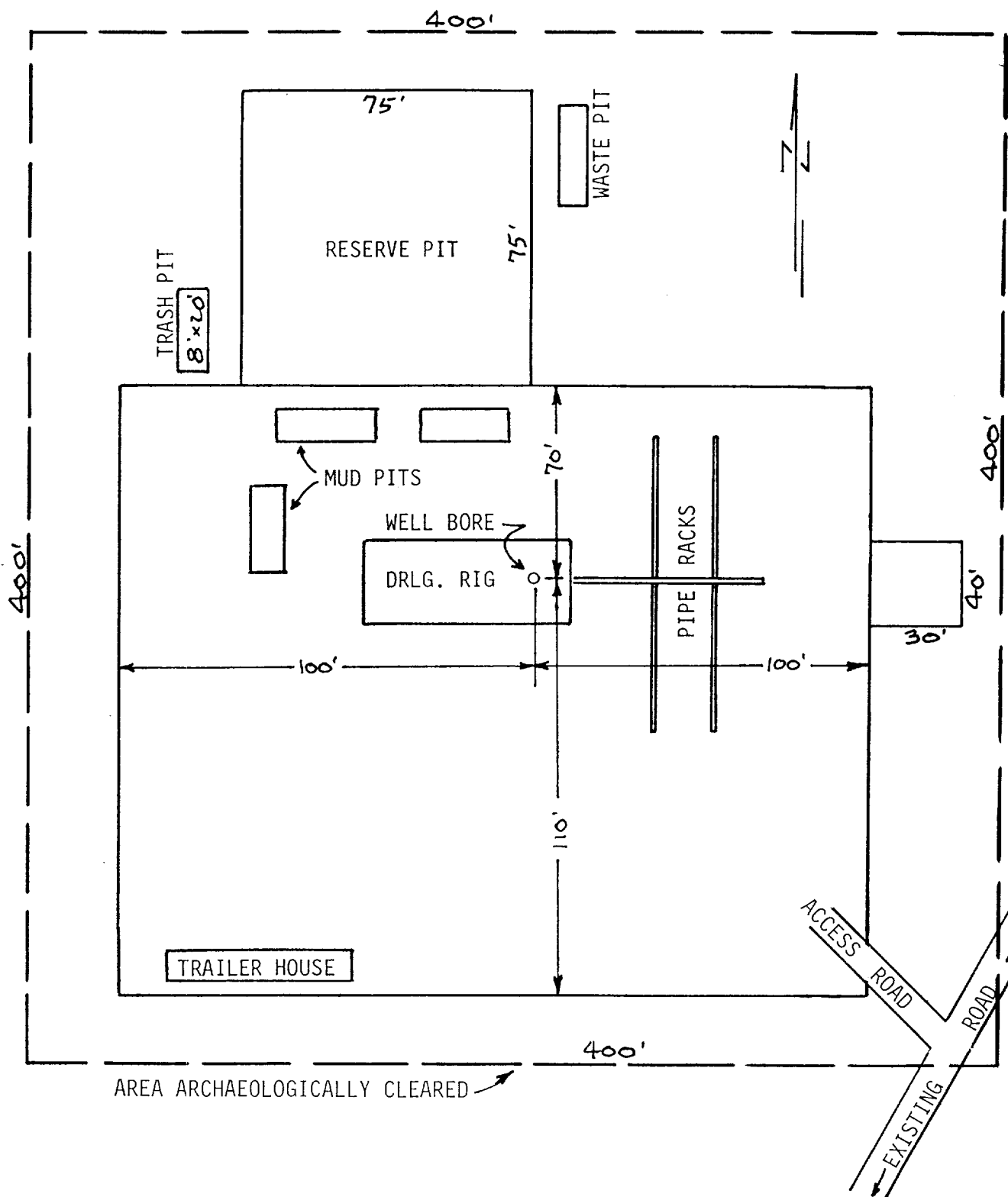


EXHIBIT "C"

ROBERT N. ENFIELD
 WELL NO. 1 FEDERAL 35
 DRILLING RIG LAYOUT
 SCALE: None

ARTHUR R. BROWN
101 E. Marland
Hobbs, New Mexico 88240
Office (505) 397-2767
Home (505) 392-5642

PETROLEUM
ENGINEERING & REGULATORY
SERVICES

JAMES A. KNAUF
1501 W. Missouri
Artesia, New Mexico 88210
Phone (505) 746-4138

101 E. Marland, Suite 105
Hobbs, New Mexico 88240

September 21, 1982

Minerals Management Service
P.O. Drawer 1857
Roswell, New Mexico 88201

Gentlemen:

This is to advise that Robert N. Enfield has made arrangements with Andrew E. Glenn, the surface owner, concerning entry and surface restoration after completion of drilling operations at well No. 1 Federal 35 located in the SW $\frac{1}{4}$ NE $\frac{1}{4}$ of Section 35, T.9 S., R.29 E., Chaves County, New Mexico, lease NM-16803-A.

In accordance with this agreement, work to be done after drilling operations are completed is as follows:

If the well is completed for production, the well location will be cleaned up and the drilling pits will be filled as soon as they are dry.

If the well is plugged and abandoned, all pits will be filled and levelled, the location will be cleaned up, and the well pad and access road will be left in place.

Sincerely,


Arthur R. Brown, Agent for
ROBERT N. ENFIELD

ARB/bb