

UNITED STATES
DEPARTMENT OF THE INTERIOR
GEOLOGICAL SURVEY

APPLICATION FOR PERMIT TO DRILL, DEEPEN, OR PLUG BACK

1a. TYPE OF WORK

DRILL ☒DEEPEN ☐PLUG BACK ☐

b. TYPE OF WELL

OIL
WELL ☐GAS
WELL ☒OTHER ☐SINGLE
ZONE ☒MULTIPLE
ZONE ☐

2. NAME OF OPERATOR

McClellan Oil Corporation ✓

3. ADDRESS OF OPERATOR

P.O. Drawer 730, Roswell, New Mexico 88202

4. LOCATION OF WELL (Report location clearly and in accordance with any State requirements.)*

At surface

660' FSL & 1980' FWL

At proposed prod. zone

14. DISTANCE IN MILES AND DIRECTION FROM NEAREST TOWN OR POST OFFICE*

25 miles north & 13 miles east of Roswell, NM

15. DISTANCE FROM PROPOSED*

LOCATION TO NEAREST
PROPERTY OR LEASE LINE, FT.
(Also to nearest drilg. unit line, if any)

660'

16. NO. OF ACRES IN LEASE

2441.49

18. DISTANCE FROM PROPOSED LOCATION*
TO NEAREST WELL, DRILLING, COMPLETED,
OR APPLIED FOR, ON THIS LEASE, FT.

3630'

19. PROPOSED DEPTH

4100'

17. NO. OF ACRES ASSIGNED
TO THIS WELL

160

20. ROTARY OR CABLE TOOLS

Rotary

21. ELEVATIONS (Show whether DF, RT, GR, etc.)

3797' G.L.

22. APPROX. DATE WORK WILL START*

11-1/82

23. PROPOSED CASING AND CEMENTING PROGRAM

SIZE OF HOLE	SIZE OF CASING	WEIGHT PER FOOT	SETTING DEPTH	QUANTITY OF CEMENT
17-1/2"	13-3/8"	48	40	6 yards
12-1/4"	8-5/8"	23	1000	250 sx (Circulated)
7-7/8"	4-1/2"	10.5	4100	350 sx

Propose to drill and test the Abo formation. Approximately 1000' of surface casing will be set and cement circulated. If production is indicated, will run production casing and attempt completion.

Geologic Tops: San Andres: 545', Glorieta: 1340', Tubb: 2865', Abo: 3615'

Mud Program: Fresh water to top of Abo. Will mud up with 15cc water loss, 40 viscosity, 9.5 lb/gal wt.

Gas not dedicated

IN ABOVE SPACE DESCRIBE PROPOSED PROGRAM: If proposal is to deepen or plug back, give data on present productive zone and proposed new productive zone. If proposal is to drill or deepen directionally, give pertinent data on subsurface locations and measured and true vertical depths. Give blowout preventer program, if any.

SIGNED

Mark McClellan

TITLE Geologist

DATE Sept. 16, 1982

(This space for Federal or State office use)

(G. S. S. S.) GEORGE H. STEWART

PERMIT NO.

APPROVAL DATE

OCT 1 1982

APPROVED BY

TITLE

DATE

CONDITIONS OF APPROVAL, IF ANY:

JAMES A. GILLHAM
DISTRICT SUPERVISOR

RECEIVED

SEP 2 1982

OIL & GAS
MINERALS MGMT. SERVICE
ROSWELL, NEW MEXICO

All distances must be from the outer boundaries of the Section.

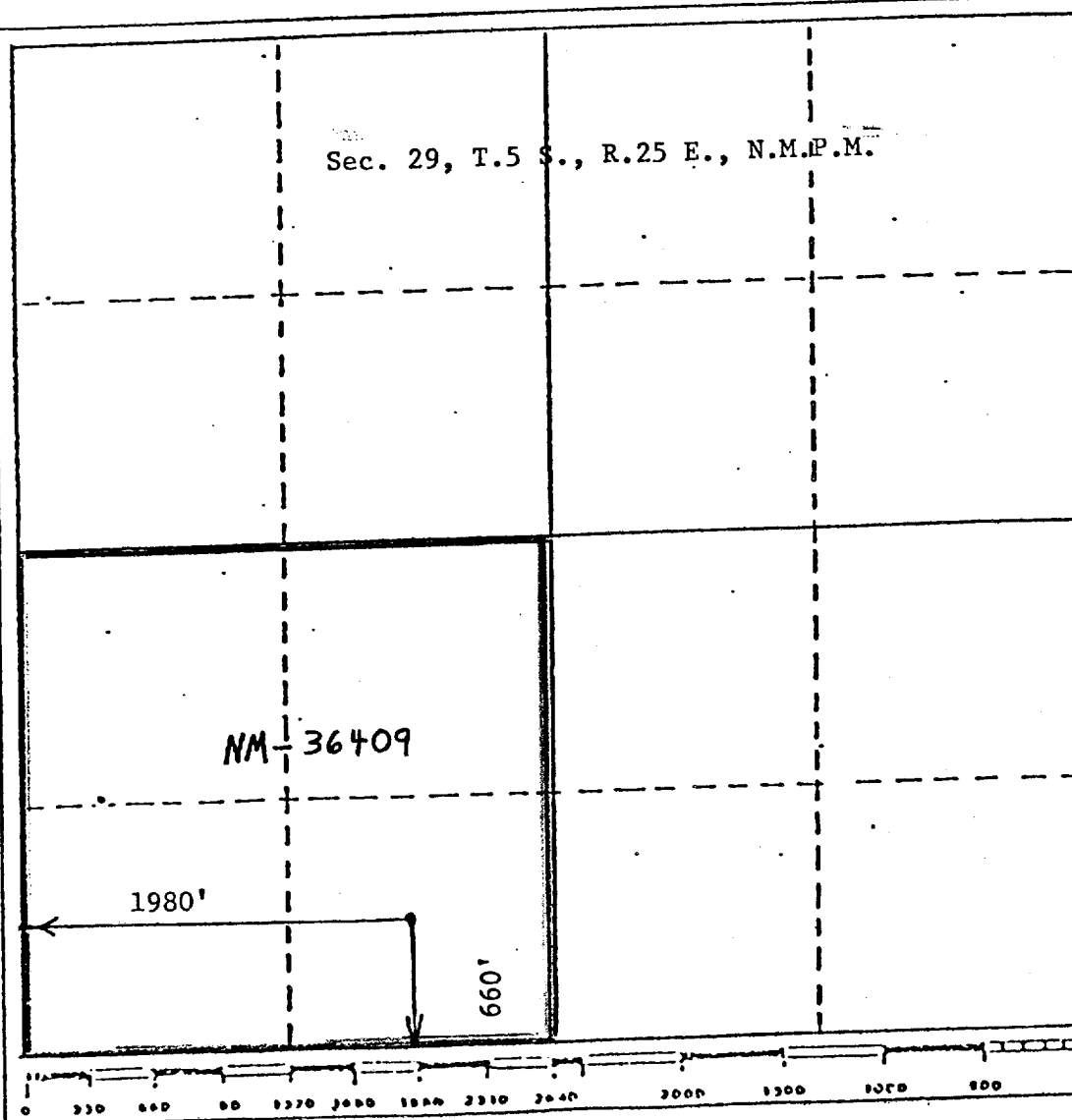
Operator McClellan Oil Corp.		Lease MOC Federal		Well No. #3
Unit Letter N	Section 29	Township 5 South	Range 25 East	County Chaves
Actual Footage Location of Well: 1980 feet from the West line and 660 feet from the South line				
Ground Level Elev. 3797	Producing Formation Abo	Pool Undesignated Abo	Dedicated Acreage: 160 Acres	

1. Outline the acreage dedicated to the subject well by colored pencil or hatchure marks on the plat below.
2. If more than one lease is dedicated to the well, outline each and identify the ownership thereof (both as to working interest and royalty).
3. If more than one lease of different ownership is dedicated to the well, have the interests of all owners been consolidated by communitization, unitization, force-pooling, etc?

☐ Yes ☐ No If answer is "yes," type of consolidation _____

If answer is "no," list the owners and tract descriptions which have actually been consolidated. (Use reverse side of this form if necessary.) _____

No allowable will be assigned to the well until all interests have been consolidated (by communitization, unitization, forced-pooling, or otherwise) or until a non-standard unit, eliminating such interests, has been approved by the Division.



CERTIFICATION

I hereby certify that the information contained herein is true and complete to the best of my knowledge and belief.

Mark McClellan

Name

Mark McClellan

Position

Geologist

Company

McClellan Oil Corp.

Date

9-16-82

I hereby certify that the well location shown on this plat was plotted from field notes of actual surveys made by me or under my supervision, and that the same is true and correct to the best of my knowledge and belief.

Date Surveyed

Registered Professional Engineer and/or Land Surveyor

John D. Jaques, P.E. & L.S.

Certificate No. 6290

6290

McClellan Federal MOC No. 3
REQUIREMENTS
(NTL-6)

1. Location: 660' FSL & 1980' FWL, Section 29-T5S-R25E
2. Elevation: 3797' G.L.
3. Geologic name of surface formation: See archaeological report
4. Type of drilling rig and associated equipment: Rotary Rig
5. Proposed drilling depth and objective formation: 4100', Abo
6. Estimated tops of geologic markers:

Yates _____	San Andres <u>545'</u>	Abo <u>3615'</u>
7-Rivers _____	Glorieta <u>1340'</u>	Wolfcamp _____
Queen _____	Tubb <u>2865'</u>	_____
7. Estimated depths of any oil, water, or gas: 3615' - 4100', Possible gas
- 8-9. Proposed casing program:

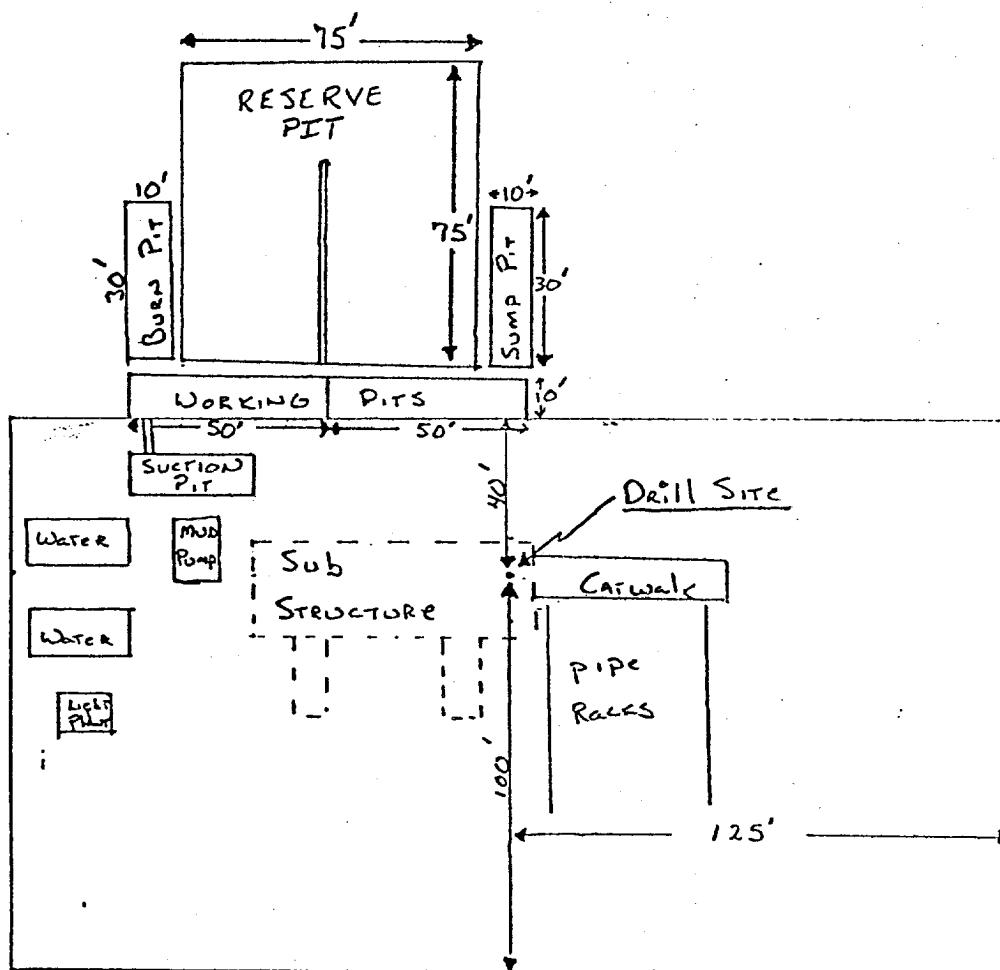
<u>13-3/8" @ 40'</u>	Grade <u>H-40</u>	Wt. <u>48</u>	Type Cement <u>6 yards</u>
<u>8-5/8" @ 1000'</u>	Grade <u>J-55</u>	Wt. <u>23</u>	Type Cement <u>Class "C"</u>
<u>4-1/2" @ 4100'</u>	Grade <u>J-55</u>	Wt. <u>10.5</u>	Type Cement <u>Class "C"</u>
10. Specifications for pressure control equipment and testing procedures: Schaeffer Model 39 (4500 psi test) See Exhibit E
11. Type and characteristics of drilling fluids: Fresh water to top of Abo.
Will mud up 100' above Abo with 20cc water loss, 40 visc, 9.5 lb/gal mud wt.
12. Testing, logging, and coring programs: No testing or coring is anticipated.
Will run Compensated Neutron - Formation Density & Dual Lateralog gamma ray logs.
13. Anticipated abnormal pressures or temperature: None
14. Anticipated commencement and completion date: 11-1-82 to 11-15-82
15. Other pertinent information: _____

McCLELLAN OIL CORPORATION
SUGGESTED PAD DIMENSIONS

Reserve Pits 4 ft. deep, plastic lined

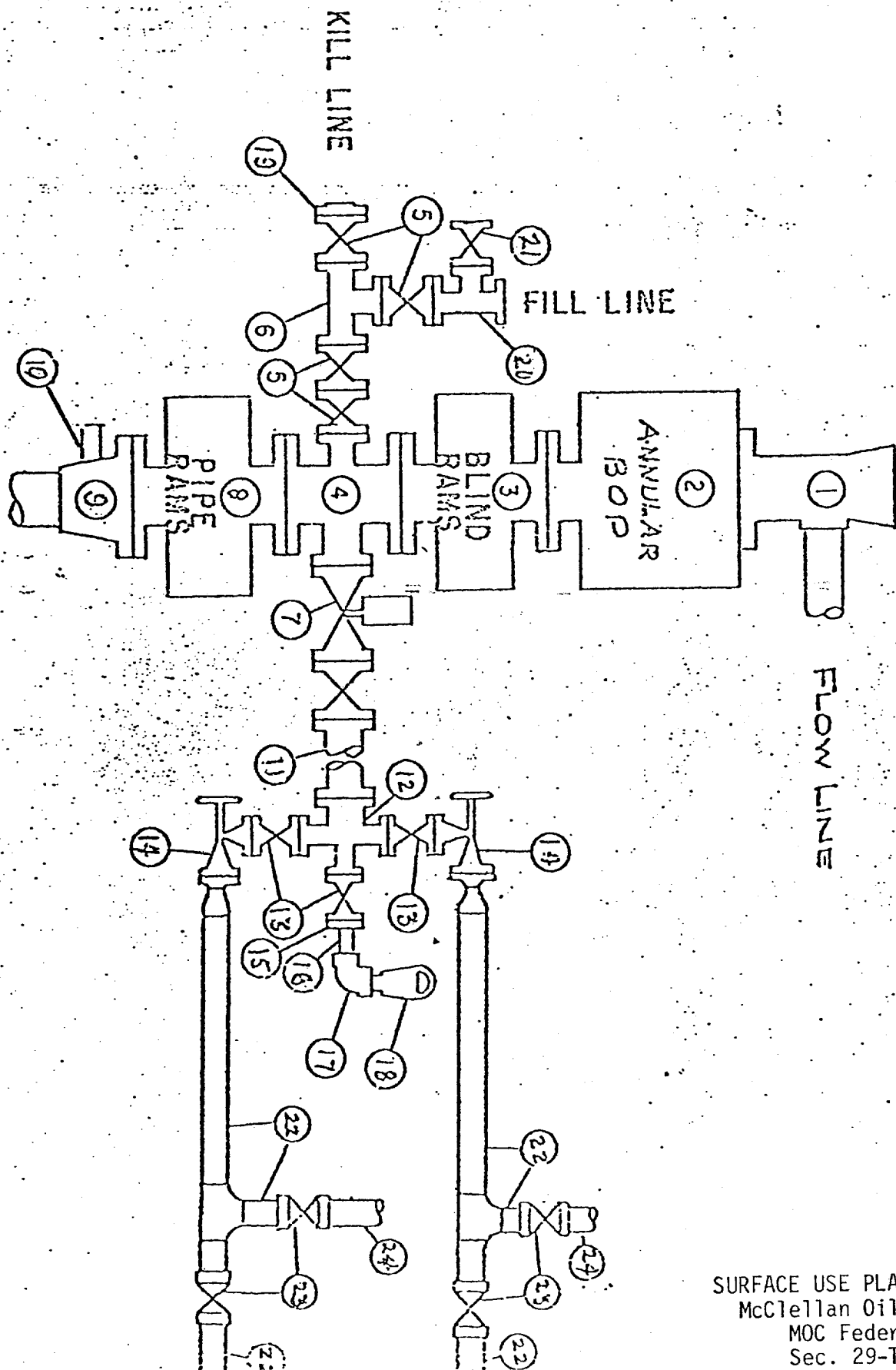
Working pits 5 ft. deep

No cellar



Scale 1" = 50'

BLOWOUT PREVENTER SPECIFICATION



SURFACE USE PLAN EXHIBIT "E"
 McClellan Oil Corporation
 MOC Federal No. 1
 Sec. 29-T5S-R25E
 Chaves County, New Mexico