

## APPLICATION FOR PERMIT TO DRILL, DEEPEN, OR PLUG BACK

## 1a. TYPE OF WORK

DRILL ☒DEEPEN ☐PLUG BACK ☐

## b. TYPE OF WELL

OIL  
WELL ☐GAS  
WELL ☒

OTHER

SINGLE  
ZONE ☐MULTIPLE  
ZONE ☐

## 2. NAME OF OPERATOR

Western Reserves Oil Co. ✓

## 3. ADDRESS OF OPERATOR

P. O. Box 933, Midland, TX 79702

## 4. LOCATION OF WELL (Report location clearly and in accordance with any State requirements.)

At surface

1980' FNL &amp; 1904' FWL

At proposed prod. zone

same

## 14. DISTANCE IN MILES AND DIRECTION FROM NEAREST TOWN OR POST OFFICE\*

20 miles Northwest Elkins

## 15. DISTANCE FROM PROPOSED\*

LOCATION TO NEAREST  
PROPERTY OR LEASE LINE, FT.  
(Also to nearest drlg. unit line, if any)18. DISTANCE FROM PROPOSED LOCATION\*  
TO NEAREST WELL, DRILLING, COMPLETED,  
OR APPLIED FOR, ON THIS LEASE, FT.

## 16. NO. OF ACRES IN LEASE

749.99

## 19. PROPOSED DEPTH

4200

17. NO. OF ACRES ASSIGNED  
TO THIS WELL

160

## 20. ROTARY OR CABLE TOOLS

Rotary

## 21. ELEVATIONS (Show whether DF, RT, GR, etc.)

3776.6

## 22. APPROX. DATE WORK WILL START\*

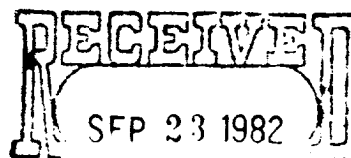
October 1, 1982

## 23.

## PROPOSED CASING AND CEMENTING PROGRAM

SIZE OF HOLE	SIZE OF CASING	WEIGHT PER FOOT	SETTING DEPTH	QUANTITY OF CEMENT
17 1/2	13 3/8"	48#	900'	1000 SX. <del>CIRCUMFER</del>
** 12 1/4	8 5/8"	24#	1700'	700 SX. <del>TIME BACK TO SURFACE</del> CS9
7 7/8	4 1/2"	10.5#	4200'	250 SX.

\*\* If lost circulation is encountered; drill through same and set 1700' of 8 5/8" 24# casing. If no lost circulation is encountered by 1700', reduce hole size to 7 7/8" and drill to TD.



GAS IS DEDICATED

OIL & GAS  
U.S. GEOLOGICAL SURVEY  
ROSWELL, NEW MEXICOPost ED-1  
10-8-82  
APP & BR

IN ABOVE SPACE DESCRIBE PROPOSED PROGRAM: If proposal is to deepen or plug back, give data on present productive zone and proposed new productive zone. If proposal is to drill or deepen directionally, give pertinent data on subsurface locations and measured and true vertical depths. Give blowout preventer program, if any.

## 24.

SIGNED

TITLE

Natural Resources Engineering  
Agents for Western Reserves Oil Co.

DATE

9-22-82

(This space for Federal or State office use)

(Orig. Sgd.) GEORGE H. STEWART

PERMIT NO.

APPROVAL DATE

SEP 30 1982

APPROVED BY

TITLE

DATE

CONDITIONS OF APPROVAL, IF ANY

WILLIAM A. GILHAM  
DISTRICT SUPERVISOR

NEW MEXICO OIL CONSERVATION COMMISSION  
WELL LOCATION AND ACREAGE DEDICATION PLAT

Form C-102  
Supersedes C-128  
Effective 1-1-65

All distances must be from the outer boundaries of the Section

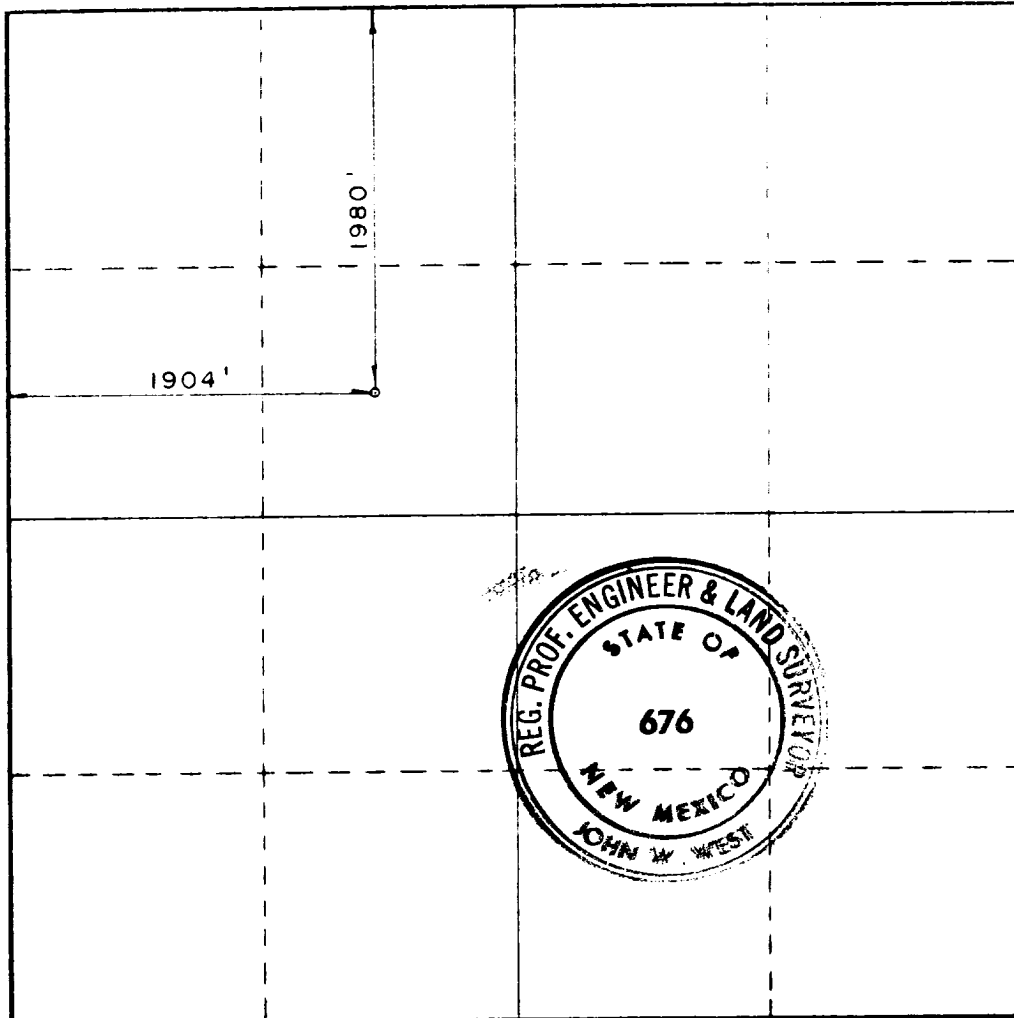
Operator <b>WESTERN RESERVE OIL CO.</b>		Lease <b>BRAVO FEDERAL</b>		Well No. <b>5</b>
Unit Letter <b>F</b>	Section <b>30</b>	Township <b>6S</b>	Range <b>25E</b>	County <b>CHAVES</b>
Actual Footage Location of Well: <b>1980</b> feet from the <b>NORTH</b> line and <b>1904</b> feet from the <b>WEST</b> line				
Ground Level Elev. <b>3776.6</b>	Producing Formation <b>ABO</b>	Pool <b>PECOS SLOPE ABO</b>	Dedicated Acreage: <b>160</b> Acres	

1. Outline the acreage dedicated to the subject well by colored pencil or hatchure marks on the plat below.
2. If more than one lease is dedicated to the well, outline each and identify the ownership thereof (both as to working interest and royalty).
3. If more than one lease of different ownership is dedicated to the well, have the interests of all owners been consolidated by communitization, unitization, force-pooling, etc?

☐ Yes ☐ No If answer is "yes," type of consolidation \_\_\_\_\_

If answer is "no," list the owners and tract descriptions which have actually been consolidated (Use reverse side of this form if necessary.) \_\_\_\_\_

No allowable will be assigned to the well until all interests have been consolidated (by communitization, unitization, forced-pooling, or otherwise) or until a non-standard unit, eliminating such interests, has been approved by the Commission.



CERTIFICATION

I hereby certify that the information contained herein is true and complete to the best of my knowledge and belief.

Name John W. West  
Position NRE Agents for  
Company Western Reserves Oil Co.  
Date 9/23/82

I hereby certify that the well location shown on this plat was plotted from field notes of actual surveys made by me or under my supervision, and that the same is true and correct to the best of my knowledge and belief.

Date Surveyed  
**SEPTEMBER 14, 1982**

Registered Professional Engineer  
and/or Land Surveyor

John W. West  
Certificate No. **JOHN W. WEST 676**  
**PATRICK A. ROMERO 6463**  
**Ronald J. Eidson 3239**

0 330 660 990 1320 1650 1980 2310 2640 2000 1500 1000 500 0

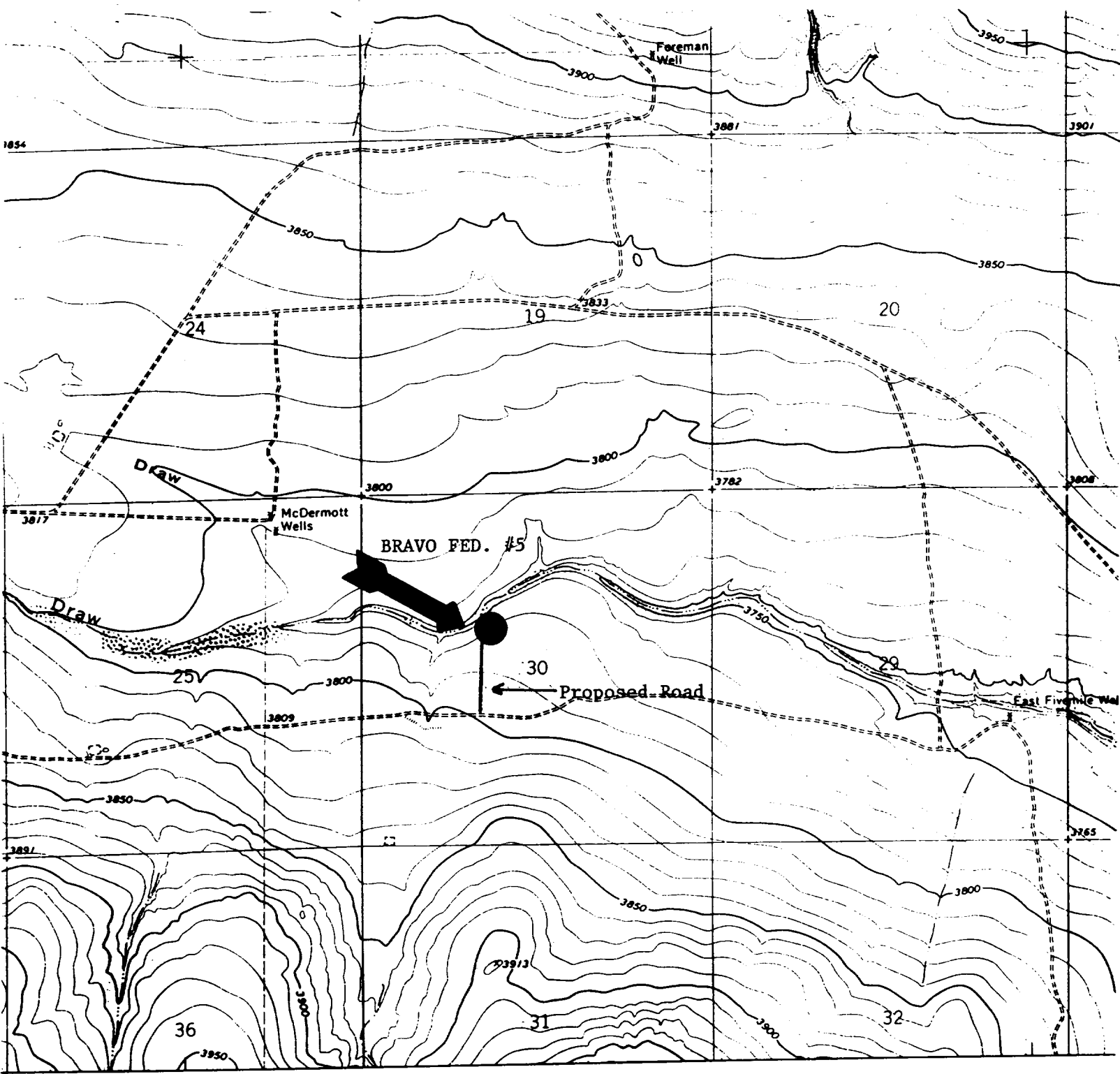
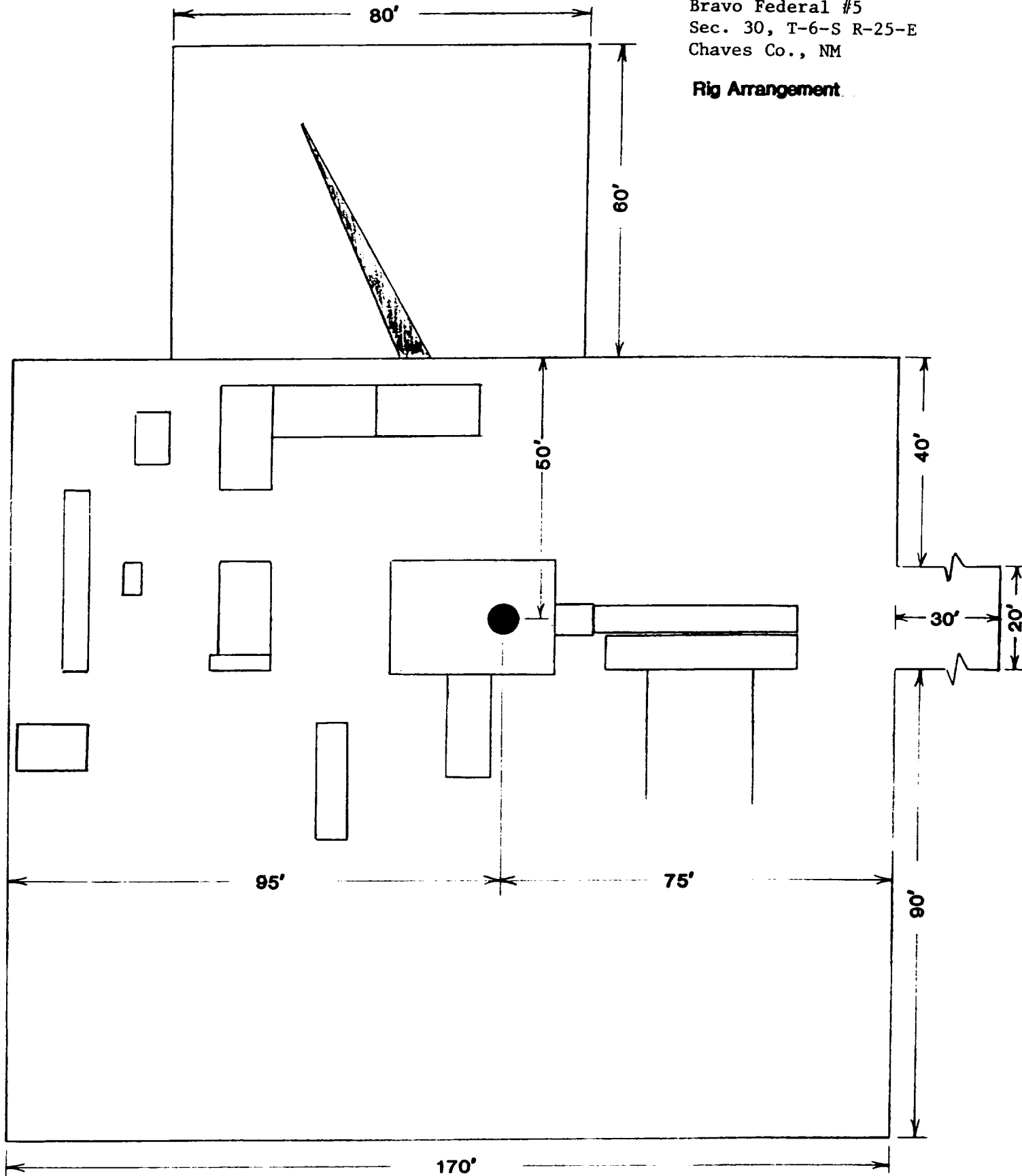


EXHIBIT B  
WESTERN RESERVES OIL CO.  
BRAVO FEDERAL #5  
SEC. 30 T-6-S R-25-E  
CHAVES CO. NM

EXHIBIT D  
Western Reserves Oil Co.  
Bravo Federal #5  
Sec. 30, T-6-S R-25-E  
Chaves Co., NM

**Rig Arrangement**



BLOWOUT PREVENTOR  
ASSEMBLY

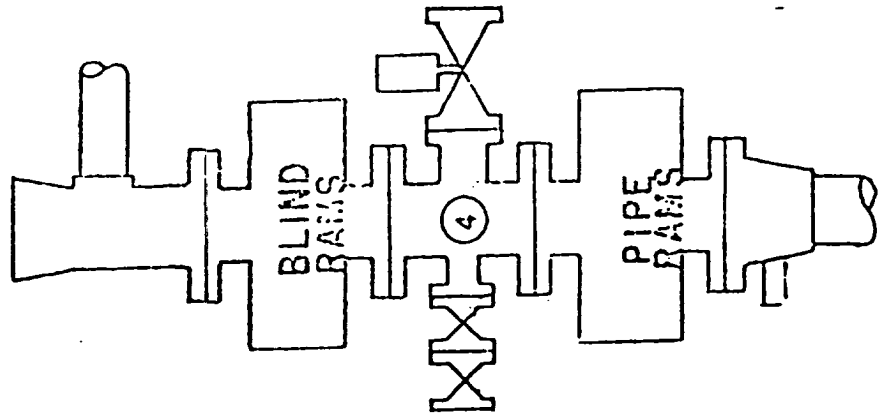


EXHIBIT D PART 2



September 22, 1982

Minerals Management Service  
P. O. Drawer 1857  
Roswell, New Mexico 88201

RE: Western Reserves Oil Company  
Bravo Federal #5  
Section 30, T-6-S, R-25-E  
Chaves County, New Mexico

Gentlemen:

This is to inform your department that we have contacted the surface owner of land located in the SE/4 of NW/4 T-6-S R-25-E, Chaves County, in regard to damages for construction of an access road and location.

If the test well results in a dry hole, we will clean location, level pits to as near natural contour as possible and place a dry hole marker according to regulations.

The surface owner will also be compensated by an amount agreeable to both parties for damages resulting from construction for the above project.

Yours very truly,

Joe T. Janica, NRE  
Agents for Western Reserves Oil Co.

JTJ/lob

cc: file (2)