

All distances must be from the outer boundaries of the Section.

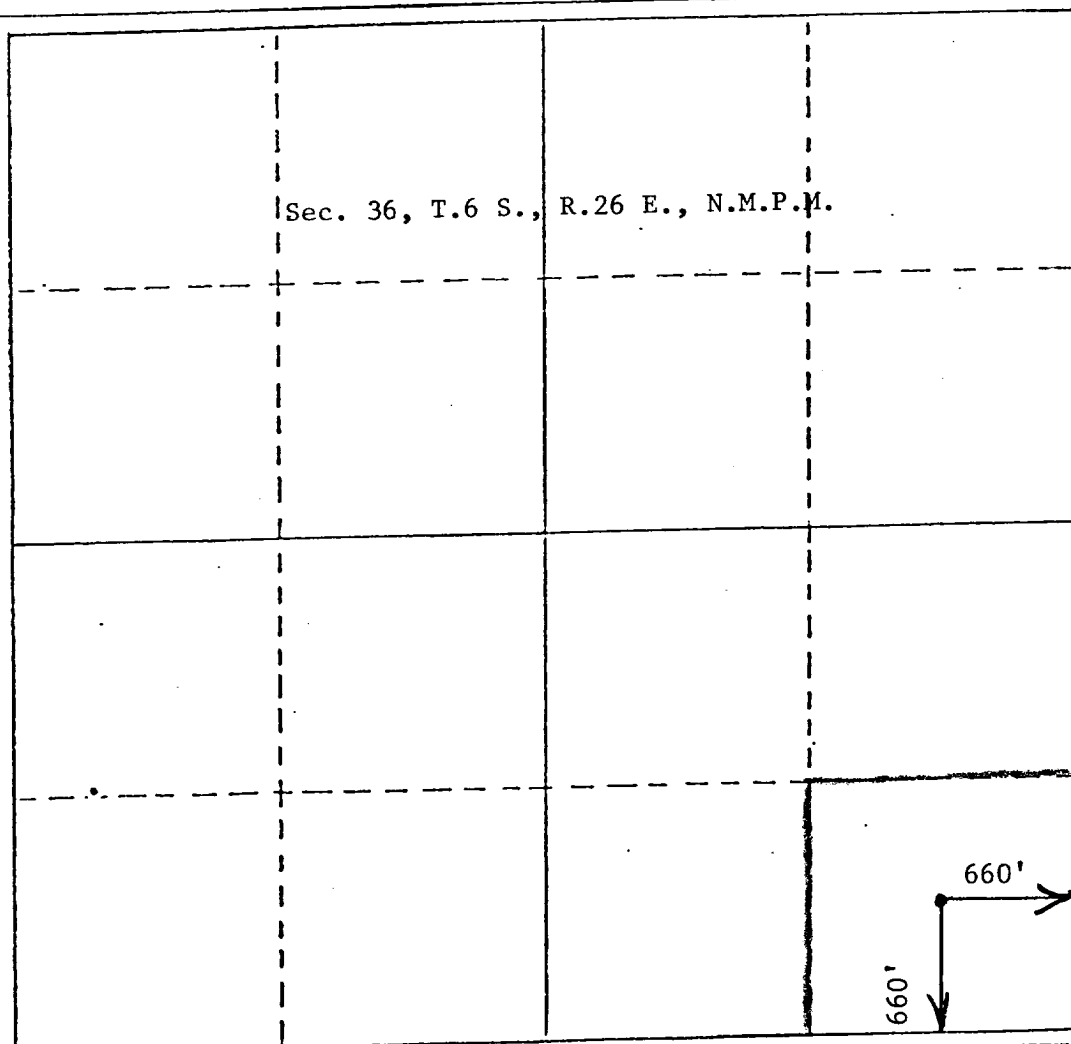
Operator McKay Oil Corp.		Lease McKay Oil Corp. Allman State		Well No. #1
Unit Letter P	Section 36	Township 6 South	Range 26 East	County Chaves
Actual Footage Location of Well: 660 feet from the South line and 660 feet from the East line				
Ground Level Elev. 3847	Producing Formation Granite Wash	Pool Wildcat	Dedicated Acreage: 40 Acres	

1. Outline the acreage dedicated to the subject well by colored pencil or hatchure marks on the plat below.
2. If more than one lease is dedicated to the well, outline each and identify the ownership thereof (both as to working interest and royalty). Single Lease
3. If more than one lease of different ownership is dedicated to the well, have the interests of all owners been consolidated by communitization, unitization, force-pooling, etc?

☐ Yes ☐ No If answer is "yes," type of consolidation _____

If answer is "no," list the owners and tract descriptions which have actually been consolidated. (Use reverse side of this form if necessary.) _____

No allowable will be assigned to the well until all interests have been consolidated (by communitization, unitization, forced-pooling, or otherwise) or until a non-standard unit, eliminating such interests, has been approved by the Division.



CERTIFICATION

I hereby certify that the information contained herein is true and complete to the best of my knowledge and belief.

James L. Schultz

Name

James L. Schultz

Position

Agent

Company

McKay Oil Corp.

Date

10-18-82

I hereby certify that the well location shown on this plat was plotted from field notes of actual surveys made by me or under my supervision, and that the same is true and correct to the best of my knowledge and belief.

JOHN D. JAQUESS
NEW MEXICO
October 16, 1982
Registered Professional Engineer
and of Land Surveyor
John D. Jaquess, P.E. & L.S.
Certificate No. 6290